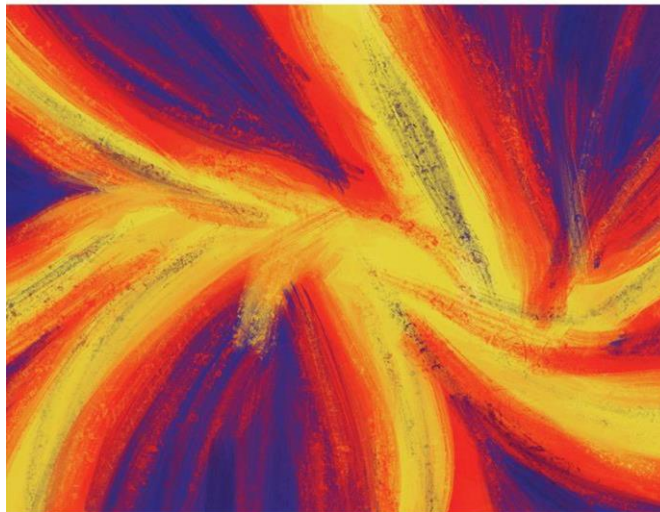

AAIDD 146th Annual Meeting

Jacksonville Preliminary Program

Dismantling Systemic Barriers:
**Reenvisioning Equity
and Inclusion**



AAIDD 146th Annual Meeting
June 13–16, 2022
Jacksonville, Florida

Rebirth and Reformation, 2021
Austin Myers
Digital Art



June 13-15, 2022

Jacksonville, FL

(Updated April 22, 2022)

JACKSONVILLE SCHEDULE AT-A-GLANCE

	SUNDAY	MONDAY	TUESDAY	WEDNESDAY
Morning		Board Meeting 9:00 – 12:00 pm	Continental Breakfast 7:30 – 8:45 am Leadership Groups Business Meetings 8:00 – 9:00 am Exhibits Open 8:00 am – 4:00 pm New Attendees Orientation 8:00 – 8:30 am Opening Plenary Session 9:00 – 10:30 am Exclusive Exhibit Time 10:30 – 11:00 am Concurrent Sessions A 11:00 am – 12:00 pm	Continental Breakfast 7:30 – 8:45 am Leadership Groups Business Meetings 8:00 – 9:00 am Exhibits Open 8:00 – 11:00 am Exclusive Exhibit Time 8:00 – 9:00 am Plenary Session 9:00 – 10:30 am Exclusive Exhibit Time 10:30 – 11:00 am Concurrent Sessions D 11:00 am – 12:00 pm
Noon		Interest Network Luncheons & Buffet Lunch ticket required* 11:30 am – 1:00 pm	Interest Network Luncheons, & Buffet Lunch ticket required* 12:00 – 1:30 pm	Awards Luncheon ticket required 12:00 – 1:00 pm
Afternoon		Open Membership Meeting and Leadership Forum 1:00 – 2:00 pm The Assembly of Geographic Regions & The Assembly of Interest Networks Meetings 2:15 – 3:15 pm Pre-Conference Sessions 3:30 – 5:00 pm	Concurrent Sessions B 1:30 – 2:30 pm Exclusive Exhibit Time 2:30 – 3:00 pm Concurrent Sessions C 3:00 – 4:00 pm Exclusive Exhibit Time 4:00 – 4:30 pm	Concurrent Sessions E 1:00 – 2:00 pm Break 2:00 – 2:15 pm Closing Plenary Session 2:15 – 3:45 pm
Evening	President's Reception 6:00 – 7:00 pm	Complimentary Pre-Conference Session 5:00 – 6:00 pm Networking Reception 6:00 – 7:30 pm Religion & Spirituality Interest Network Dinner* 7:00 pm	Poster Session and Reception 5:00 – 6:30 pm	

*Additional fee required

Monday, June 13

9:00 am – 12:00 noon

Board of Directors Meeting

1:00 – 2:00 pm

Leadership Forum and Open Membership Meeting

2:15 – 3:15 pm

- The Assembly of Interest Networks Meeting
- The Assembly of Geographic Regions Meeting

3:30-5:00 pm

Religion & Spirituality Forum **Fee \$35**

What is Meaningful Work? Enhancing Commitment and Calling with Direct Support Professionals

Living the values of support services means focusing on spiritual questions about what it means to be human, to care, and be part of the community. Person centered approaches respect individual and cultural values of the people we support. Does it do the same for staff? Short presentations by Deborah Fisher, Amy Petré Hill, and Bill Gaventa followed by dialogue among all participants.

3:30-5:00 pm

Writing for Publications

Frank Symons, PhD, FAAIDD, Editor, AJIDD

James R. Thompson, PhD, FAAIDD, Editor, IDD

Colleen Thoma, PhD, FAAIDD, co-Editor, Inclusion

LaRon Scott, EdD, co-Editor, Inclusion

3:30-5:00 pm

Advancing and Maintaining Cultural and Linguistic Competence Requires Organizational Change

Tawara Goode, MA, Georgetown University

Janice Enriquez, PhD, University of California, Davis

3:30-5:00 pm

SECP Research Colloquium- Organized by the AAIDD Student and Early Career Professional and Research Interest Networks

Hosts: *Chung Eun Lee, PhD, Chonnam National University and Jessica Kramer, PhD, University of Florida*

The purpose of the research colloquium is to provide AAIDD students and early career professionals (SECPs) with an opportunity to present their research and network with leading intellectual and developmental disability researchers and policymakers. Participants will receive feedback on how to translate their work into meaningful research, policy, and practice.

Presenters:

Megan E. Carpenter, Ph.D., BCBA, Kansas University Center on Developmental Disabilities

Jessica N. Hoyle, MMT, University of North Carolina at Charlotte

Emily Tucker, MS., The University of Kansas

Anne Malbica, MA., University of Utah

Sarah Collins, MS., Florida State University

Fiorella Guerrero, MA., University of Florida

5:00-6:00 pm

Position Statements for Dismantling Systemic Barriers

Marty Ford, JD, The Arc of the US

Anthony Rodriguez, PhD, FAAIDD, Providence College

Amie Lulinski, PhD, FAAIDD, The Arc of Illinois

Barbara Kleist, JD, FAAIDD, University of Minnesota

Jean Phelps, MSW, FAAIDD, Encompass Human Services

Kendra Williams-Diehm, PhD, FAAIDD University of Oklahoma

NETWORKING OPPORTUNITIES

SUNDAY, JUNE 12

6:00 – 7:00 pm

President's Reception

Open to all conference attendees at no additional cost.

MONDAY, JUNE 13

12:00 – 1:00 pm

Monday Lunch Buffett *(additional fee required \$20)*

The Social and Sexual Relationships Interest Network will be meeting over lunch.

Purchase a lunch ticket for admission.

6:00 – 7:00 pm

Networking Reception

(Open to all conference attendees at no additional cost)

7:00 pm

Religion & Spirituality Interest Network Dinner (offsite)

(Open to all conference attendees, Cost \$35)

TUESDAY, JUNE 14

12:00 – 1:30 pm

- **Tuesday Lunch Buffet** *(additional fee required \$20)*

The Education Interest Network will be meeting over lunch. Purchase a lunch ticket for admission.

- **Past President's Lunch** *(by invitation only)*
- **Psychology Interest Network Meeting** *(Additional fee required \$20)*
- **SECP Luncheon** *(additional fee required \$15)*

5:00 – 6:30 pm

Poster Presentations and Reception

*(Open to all conference attendees at no additional cost)
see website for a list of posters*

WEDNESDAY, JUNE 15

12:00 – 1:00 pm

Awards Luncheon

*(Complimentary to conference attendees, tickets are required,
please request a ticket when you register)*

PLENARY SESSIONS

Tuesday, June 14

9:00 am - 10:30 am

Presidential Address: Dismantling Systemic Barriers: Reenvisioning Equity and Inclusion



Karrie Shogren, PhD, FAAIDD
Professor and Senior Scientist, University of Kansas
Director, Kansas University Center on Developmental Disabilities

Wednesday, June 15

9:00 am - 10:30 am

Reenvisioning Equity and Inclusion: Scholarship, Policy, and Practice



Subini Annamma, PhD
Associate Professor, Stanford Graduate School of Education



Rebecca Cokley
Program Officer, U.S. Disability Rights, Ford Foundation



Finn Gardiner, MPP
Communications Specialist, Brandeis University

Wednesday, June 15

2:15 – 3:45 pm

Reenvisioning the Right to Science: Equity in Outcomes and Processes



Khalilah Robinson Johnson, PhD
University of North Carolina School of Medicine



Anjali Forber-Pratt, PhD, US HHS
Administration on Community Living



Brad Linnenkamp
University of Kansas

Exhibit Hall Hours

Tuesday, June 14
from 8:00am-4:30pm

Exclusive time:

- 8:00 am – 9:00 am
- 10:30 am – 11:00 am
- 2:30 pm – 3:00 pm
- 4:00 pm – 4:30 pm

Wednesday, June 15
from 8:00am-11:00am

Exclusive time:

- 8:00 am – 9:00 am
- 10:30 am – 11:00 am

JUNE 14, 2022

11:00 am – 12:00 pm Concurrent Sessions A

Session A1	Session A2	Session A3	Session A4
<p>Supporting Courtship, Sexuality, & QoL Outcomes</p> <p>Love On the Spectrum and the Neurotypical Gaze Shelby Landmark, Texas A&M University Rhonda Black, PhD, FAAIDD, University of Hawaii at Manoa</p> <p>Challenges and Needs of LGBTQ+ People with Intellectual Disability: A Narrative Review Ann-Sophie Otis, Université du Québec à Trois-Rivières Kévin Lavoie, PhD, Université du Québec à Montréal Élise Milot, PhD, Université Laval Martin Caouette, PhD, Université du Québec à Trois-Rivières Ariane Marchand-Labelle, MA, Conseil Québécois LGBT</p>	<p>Self-Determination and Racially and Ethnically Marginalized Students</p> <p>Promoting self-determination for racially and ethnically marginalized students with disabilities Mayumi Hagiwara, PhD, San Francisco State University Sheida K. Raley, PhD, University of Kansas Karrie Shogren, PhD, FAAIDD, University of Kansas</p> <p>The Impact of the SDLMI for Racially and Ethnically Marginalized Students Sheida Raley, PhD, University of Kansas Karrie Shogren, PhD, FAAIDD, University of Kansas Hunter Matusevich, University of Kansas Aziz Alsaed, MS, University of Kansas</p>	<p>Reducing Bias in Justice</p> <p>Addressing Conflicts Based on Disability Mildred Duprey de Robles, MA, US DOJ, Community Relations Service</p> <p>Combining Community Policing with Disability Awareness LaToshia Butler, US DOJ, Office of Community Oriented Policing</p> <p>The Americans with Disabilities Act in State and Local Criminal Justice Settings Steven Gordon, US DOJ, US Attorney's Office for the Eastern District of Virginia</p>	<p>Advancing Mental Health Intervention Outcomes</p> <p>A Scoping Review of Psychological Interventions and Accommodations for Adults with Intellectual Disability Megan K. Held, The Ohio State University Andrea N. Witwer, PhD, The Ohio State University Katherine Walton, PhD, The Ohio State University Margaret Rosencrans, PhD, The Ohio State University Chelsea Cobranchi, MS, The Ohio State University Robert Fletcher, PhD, The Ohio State University Jill Crane, MA, The Ohio State University Richard Chapman, MA, The Ohio State University Susan Havercamp, PhD, FAAIDD, The Ohio State University</p> <p>Working with Adults with ID and Clinicians to Advance Mental Health Treatment Margaret Rosencrans, PhD, The Ohio State University Andrea N. Witwer, PhD, The Ohio State University Chris Taylor, PhD, The Ohio State University Chelsea Cobranchi, MS, The Ohio State University</p> <p>Moving Toward Professional Practice Mental Health Treatment Guidelines for Adults with ID Andrea N. Witwer, PhD, The Ohio State University</p>

JUNE 14, 2022
1:30 pm – 2:30 pm Concurrent Sessions B

Session B1	Session B2	Session B3	Session B4
<p>Evaluating HCBS Outcomes</p> <p>The Development and Testing of HCBS Outcome Measures Designed for Proxy Respondents Matthew Roberts, MS, University of Minnesota Renáta Tichá, PhD, University of Minnesota Brian Abery, PhD, University of Minnesota James Houseworth, PhD, University of Minnesota</p> <p>Results from a Pilot Study of Person-Centered Home and Community-Based Services Outcome Measures Brian Abery, PhD, University of Minnesota Renáta Tichá, PhD, University of Minnesota Matthew Roberts, MS, University of Minnesota Martin (Alec) Nyce, MS, University of Minnesota James Houseworth, PhD, University of Minnesota</p>	<p>Disparities in Transition Outcomes</p> <p>Parent Support Groups for Transition-Aged Students with IDD: A Participatory Action Research Chung Eun Lee, PhD, Chonnam National University Minsik Choi, St. Peter's School</p> <p>From High School to the Cliff: Disparities in Navigating IDD Policies Before and During the Pandemic Tonie Sadler, MSW, PhD, Northwestern University</p>	<p>Sustaining Self-Directed Supports</p> <p>Self-Directed Supports: Benefits and Challenges Sarah Hall, PhD, FAAIDD, University of Minnesota Libby Hallas, MS, University of Minnesota Jennifer Hall-Lande, PhD, University of Minnesota</p> <p>The Sustainability of Self-Directed Supports Across the Lifespan Libby Hallas, MS, University of Minnesota, Sarah Hall, PhD, FAAIDD, University of Minnesota Jennifer Hall-Lande, PhD, University of Minnesota</p>	<p>Advance Look at the 2023 Second Edition of the SIS-A</p> <p>Changes to the Supports Intensity Scale-Adult Version James R. Thompson, PhD, FAAIDD, University of Kansas</p> <p>Planning for the Success of Students with IEPs: A Systematic, Supports- Based Approach Virginia L. Walker, PhD, University of North Carolina at Charlotte Megan E. Carpenter, PhD, University of Kansas</p> <p>Understanding the Impact of the SIS-A Re-norming on Support Budgets Colleen Kidney, PhD, Human Services Research Institute</p>

JUNE 14, 2022

3:00 pm – 4:00 pm Concurrent Sessions C

Session C1	Session C2	Session C3	Session C4
<p>Promoting Health Research Engagement</p> <p>A Capacity Building Process for Health Research Engagement with People with Intellectual Disability Karla Ausderau, PhD, University of Wisconsin- Madison Libby Hladik, MS, University of Wisconsin-Madison Allison Doerpinghaus, OTD, University of Wisconsin-Madison Brittany St. John, MS, University of Wisconsin- Madison</p> <p>Health Research Toolkit: Research Engagement Education for People with Intellectual Disability Brittany St. John, MS, University of Wisconsin- Madison Libby Hladik, MS, University of Wisconsin-Madison Allison Doerpinghaus, OTD, University of Wisconsin-Madison Steve Woodard, University of Wisconsin-Madison Tyler Wigington, University of Wisconsin-Madison Allison Muschett, University of Wisconsin- Madison Karla Ausderau, PhD, University of Wisconsin- Madison</p> <p>Tools and Strategies for Inclusive Research Dissemination Beyond Peer-reviewed Publications Allison Doerpinghaus, OTD, University of Wisconsin-Madison Libby Hladik, MS, University of Wisconsin-Madison Brittany St. John, MS, University of Wisconsin- Madison Maryann Gonzalez, University of Wisconsin- Madison Cindy Bentley, University of Wisconsin-Madison Edward Kastern, University of Wisconsin-Madison Kayte Barton, University of Wisconsin-Madison John Rogers, University of Wisconsin-Madison Nicole Noblet, University of Wisconsin-Madison Karla Ausderau, PhD, University of Wisconsin- Madison</p>	<p>Skills for Success in Postsecondary Education and Employment</p> <p>Creating Pathways to Success through Inclusive Postsecondary Education for Students with ID Janice Seabrooks-Blackmore, PhD, Florida Center for Students with Unique Abilities W. Drew Andrews, EdD, Florida Center for Students with Unique Abilities</p> <p>Day and Employment Participation Among IDD Services Users: Factors Contributing to Paid and Community-Based Activities James Houseworth, PhD, University of Minnesota Sandra Pettingell, PhD, University of Minnesota Roger Stancliffe, PhD, FAAIDD, University of Minnesota Julie Bershadsky, PhD, University of Minnesota Renáta Tichá, PhD, University of Minnesota Alicia Zhang, MA, University of Minnesota</p>	<p>Visions and Strategies for Equity</p> <p>Creating an Equity Review Board for our Organization's Policy and Research Projects Colleen Kidney, PhD, Human Services Research Institute Yoshi Kardell, MSW, Human Services Research Institute Dorothy Hiersteiner, MPP, FAAIDD, Human Services Research Institute Alexandra Bonardi, MS, MPA, FAAIDD, Human Services Research Institute Bevin Croft, PhD, Human Services Research Institute Jami Petner-Arrey, PhD, Human Services Research Institute</p> <p>How we Reenvision Equity & Inclusion: Perspectives from the Social Work Interest Network Jacqueline McGinley, PhD, MSW, AAIDD Social Work Interest Network & Binghamton University</p>	<p>Advancing and Maintaining Cultural and Linguistic Competence Requires Organizational Change</p> <p>Tawara Goode, MA, Georgetown University Janice Enriquez, PhD, University of California, Davis</p>

JUNE 15, 2022

11:00 am – 12:00 pm Concurrent Sessions D

Session D1	Session D2	Session D3	Session D4
<p>Advancing Equity in Sexual Health</p> <p>Attitudes to Sexuality and Reproductive Health in a Rural and Frontier Community Canyon Hardesty, MS, University of Wyoming Amy M. Rieser, University of Wyoming</p> <p>Partnership and Adaptation to Increase the Reach of Relationship and Sexual Health Education for People with IDD: the Friendships & Dating Program in Alaska, Wyoming, and Oregon Sondra LeClair, University of Alaska Anchorage</p> <p>Friendships and Dating in Oregon Transition Programs: Action for Sexual Health Equity Lindsay Sauve, MPH, Oregon Health & Science University Angie Stapleton, MPA, Oregon Health & Science University Kira Norton, MPH, Oregon Health & Science University</p>	<p>Disrupting the Transition Planning Paradigm</p> <p>Dispelling the CLD Monolith: Counterstories of Racialized Families Navigating Transition Planning Sehrish Shikarpurya, MA, MTeach, Texas A&M University Carly Gilson, PhD, Texas A&M University Claudia Dunn, PhD, San Diego State University Katherine Fletcher, MA, Texas A&M</p> <p>Confronting Systemic Barriers in Transition Planning: Why it's Time to Redefine Transition Planning for South Asian Families Sehrish Shikarpurya, MA, MTeach, Texas A&M University</p>	<p>Evaluating Service Quality</p> <p>Developing a Framework for Measuring Service Quality in Europe Jan Siska, PhD, Charles University & University of Minnesota Julie Beadle-Brown, PhD, University of Kent</p> <p>Quality of Community-Based Services in the Czech Republic Sarka Kanova, PhD, University of West Bohemia Julie Beadle-Brown, PhD, University of Kent Kristyna Janyskova, PhD, University of West Bohemia Karel Rezac, PhD, University of West Bohemia</p> <p>The Development of Person-Centered Home and Community Based Outcome Measures in the US Renáta Tichá, PhD, University of Minnesota Brian Abernethy, PhD, University of Minnesota</p>	<p>NIDILRR Funding Priorities</p> <p>Anjali Forber-Pratt, PhD, US HHS Administration on Community Living</p>

JUNE 15, 2022

1:00 – 2:00 pm Concurrent Sessions E

Session E1	Session E2	Session E3	Session E4
<p>Evolving Workforce Issues</p> <p>Challenges Faced by Direct Support Professionals During COVID-19 Sandra L. Pettingell, PhD, University of Minnesota Julie Bershadsky, PhD, University of Minnesota Amy Hewitt, PhD, FAAIDD, University of Minnesota Jerry Smith, MBA, University of Minnesota</p> <p>Challenges Faced by IDD Provider Agencies in the Time of COVID-19 Valerie Bradley, MA, FAAIDD, Human Services Research Institute Alexandra Bonardi, MS, MPA, FAAIDD, Human Services Research Institute</p> <p>An Overview of Promising Workforce Retention and Recruitment Strategies Valerie Bradley, MA, FAAIDD, Human Services Research Institute</p>	<p>Systems Transformation One Step at a Time</p> <p>Development and Analysis of a Rural Statewide Crisis Response System Heidi Paulson, PsyD, North Dakota DHS Life Skills and Transition Center Paul Kolstoe, PhD, FAAIDD, North Dakota DHS Life Skills and Transition Center & University of North Dakota Heather Jenkins, North Dakota DHS Life Skills and Transition Center Kris Tisdale, MSW, North Dakota DHS Life Skills and Transition Center Keith Vavrovsky, North Dakota DHS Life Skills and Transition Center Jennifer Hooey, North Dakota DHS Life Skills and Transition Center</p> <p>Reducing and Eliminating Rights Restrictions and Advocating Guardianship Changes in a CQL Accredited State-Run Institution Heidi Paulson, PsyD, North Dakota DHS Life Skills and Transition Center Allison Skari, MSW, Private Practice</p> <p>Exploration of Competency to Stand Trial Evaluations for People with Intellectual and Developmental Disabilities in North Dakota Heidi Paulson, PsyD, North Dakota DHS Life Skills and Transition Center Paul Kolstoe, PhD, FAAIDD, North Dakota DHS Life Skills and Transition Center & University of North Dakota Jon Santiago, MA, North Dakota DHS Life Skills and Transition Center</p>	<p>Pandemic and Health Outcomes</p> <p>Amount and Quality of Care Before and During COVID-19 and Experiences of Those Receiving Disability Emily Hickey, PhD, University of Wisconsin-Madison Lucas Stanley, University of Wisconsin- Madison Allison Doerpinghaus, OTD, University of Wisconsin-Madison Karla Ausderau, PhD, University of Wisconsin-Madison Leann DaWalt, University of Wisconsin- Madison</p> <p>Vaccine Receipt, Hesitancy, and Self- Reported Health Status for Special Olympics Athletes Ashlyn Smith, PhD, Special Olympics Inc. Iulia Mihaila, PhD, Special Olympics Inc. Kiki Martin, Special Olympics Inc. Alicia Bazzano, MD, PhD, MPH, Special Olympics Inc.</p>	<p>TBD</p>