

Knowledge Translation

Power Through Research,
Policy, and Practice

AAIDD 143rd Annual Meeting
June 24–27, 2019
The Twin Cities, Minnesota

 **aaidd**
American Association
on Intellectual and
Developmental Disabilities



Welcome to the Twin Cities and the AAIDD's 143rd Annual Meeting.

According to English philosopher John Locke, “The improvement of understanding is for two ends: first, our own increase of knowledge; secondly, to enable us to deliver that knowledge to others.” The theme this year, *Knowledge Translation: Power Through Research, Policy and Practice*, fully embodies Locke’s wise words. I am sure you will find the program Dr. Laura Lee McIntyre and the AAIDD National Planning Committee have prepared to be intellectually stimulating and very thought-provoking. My sincere congratulations to Laura Lee and the committee members for their fine work over the last year. Our annual meeting is a time when you can also actively participate in the process of knowledge translation. While doing so, enjoy connecting with your AAIDD family, and collectively contributing to AAIDD’s mission to promote progressive policies, sound research, and universal human rights for people with intellectual and developmental disabilities.



We hope that all new attendees to AAIDD’s annual meeting sense the professional fellowship that keeps members engaged with our association. We are the oldest professional organization devoted to the field of intellectual and developmental disabilities, and our longevity is a testament to our adaptability, relevance, and value we provide to our multidisciplinary membership across the globe.

We are fortunate that so many members become invested in the organization. For those new to the field, join our vibrant Student and Early Career Professionals Interest Network, or better still, get involved in leadership activities! New attendees are encouraged to check out our other Interest Networks to get connected with others who share your passion on a specific topic. In doing so, I guarantee you will make lifelong friendships and invaluable professional contacts. There are so many more ways to get connected with AAIDD activities—I urge you to do so! While the meeting is a time to learn from others, please do not miss the many opportunities for social networking—the old fashioned way!

AAIDD has an incredible team who work diligently behind the scenes to make your conference experience an exceptional one. They are guided by Dr. Maggie Nygren, AAIDD Executive Director/CEO whose leadership of AAIDD is simply exemplary. Finally, I would like to recognize and thank my fellow AAIDD board members for their sustained energy, continued service, and their great wisdom.

There are many options for conferences available throughout the year—we are so grateful that you chose to attend AAIDD 143! **We aim to be your professional family and you are welcome here!**

A handwritten signature in black ink, appearing to read "E.A.P.", with a stylized flourish at the end.

Elizabeth A. Perkins PhD, RNLD, FAAIDD, FGSA
President, AAIDD Board of Directors, 2018–2019

Welcome to the Twin Cities and to the 2019 AAIDD Annual Meeting!

It is a pleasure to welcome you to the 143rd Annual meeting of the American Association on Intellectual and Developmental Disabilities (AAIDD). On behalf of the National Planning Committee, the Local Arrangements Committee (co-chaired by Barbara Kleist and Justin Kuehl), the AAIDD Board of Directors, and the AAIDD national staff, thank you for attending this year's conference in the Twin Cities. Special thanks goes to Maggie Nygren and Maria Alfaro for their leadership and organizational efforts.



We have a wonderful conference planned for you this year. The conference theme is *Knowledge Translation: Power Through Research, Policy, and Practice*. Our plenary sessions will focus on innovations in our field that are being translated and implemented on a grand scale. Rob Horner will speak on lessons learned from scaling up Positive Behavioral Interventions and Supports. Nirb Singh will be talking about the power and promise of mindfulness-based interventions in real world IDD settings. In the presidential address, I'll be speaking about my personal journey of knowledge translation, focusing on family-based interventions to promote well being.

Beyond the plenaries, we have many fantastic concurrent sessions – 30 sessions to be exact! In addition to the concurrent sessions we have five poster symposia and the not-to-be-missed poster reception. You are sure to find presentations that will inspire you and provide networking opportunities for connecting with colleagues. Please peruse the program and plan to attend sessions, engage with the speakers, and connect with colleagues.

New to the 2019 conference are **Issue Briefs**. Each Practice, Policy, or Research Issue Brief session is chock full of short presentations that highlight important takeaways on emerging findings. This format is gaining popularity at institutions of higher education and in a variety of disciplines outside our field, and the presentations were rigorously peer reviewed and hand selected to provide an interesting forum for engaging with the material. We hope you enjoy!

AAIDD is known for its interesting and stimulating pre- and post-conference sessions, many of which have been approved for continuing education. **Everyone is welcome to attend a complimentary pre-conference session on Monday evening from 4:30 – 6pm.** Jerry Smith and Amy Hewitt will be screening the film *Invaluable: The Unrecognized Profession of Direct Support* and facilitating a panel discussion following the film.

Lest you think that AAIDD is “all work and no play”, please come on out for our many social events. The President's Reception is on Sunday night followed by two different opportunities to attend a baseball game—Monday or Tuesday night. I encourage you to visit the exhibitors and silent auction and be sure to thank our exhibitors and sponsors listed in the program. Their generosity has made this meeting special.

Please take advantage of the many opportunities that the AAIDD conference provides for learning and networking in the field of intellectual and developmental disabilities. I look forward to meeting you in the Twin Cities. Welcome to the meeting. We are so glad you're here!

A handwritten signature in black ink that reads "Laura Lee McIntyre". The signature is fluid and cursive.

Laura Lee McIntyre, PhD, FAAIDD
President-Elect and Conference Chair

Planning Committee Members

Len Abbeduto
Vince Chesney
Melissa DiSipio
David Ervin
Sharon Gomez
Susan Havercamp
Barb Kleist
Justin Kuehl
Loui Lord Nelson
Joanna Pierson
Frank Symons

Senior Consultants

Val Bradley
Cathy Ficker Terrill
Amy Hewitt

Local Arrangements Committee Members

Barbara Kleist (*co-chair*)
Justin Kuehl (*co-chair*)
Don Anderson
Lynda Lahti Anderson
Beth Fondell
Kristin Gremban
Amy Hewitt
Patrick Mitchell
Nancy Pickett
Jerry Smith

Welcome to St. Paul!



Adventure is what you make it in Saint Paul. Whether your adventure takes you outdoors on the many miles of riverfront trails, or finds you enjoying theatre in our uniquely different venues or finds you attending high school, college, and professional hockey all in the same week, it starts in Saint Paul.

Saint Paul is perfect for an amazing number of outdoor recreational opportunities. You'll be amazed by the mighty Mississippi River...miles of trails for biking and jogging...and dozens of lakes for swimming, boating and fishing. And even though our outdoors is really without equal, our indoors will stir your senses as well.

The very best Broadway shows, intriguing art galleries, world-class museums, and powerful stage performances will capture your imagination. And what trip would be complete without shopping and fabulous food? Once again, we've got you covered!

From eclectic to classic, you can shop in renovated historic buildings, unique boutiques and well-renowned department stores. And when it's time for a little refreshment, you'll find restaurants serving up some distinctly regional tastes. We've got the perfect recipe for your favorite getaway. The hard part will be deciding what to do first.

Thank you to our generous conference sponsors

GOLD

Anthem
anthem.com



SILVER

AAIDD Region 9



BRONZE

StationMD
stationmd.com



GREEN

Carf International
Carf.org



Coleman Institute for Cognitive Disabilities
colemaninstitute.org



Coleman Institute for Cognitive Disabilities
UNIVERSITY OF COLORADO

Philadelphia Coordinated Health Care
Pchc.org



MassMutual Special Care
massmutual.com/specialcare



Temple University Institute on Disabilities
temple.edu/instituteondisabilities



Research & Training Center on Community Living
University of Minnesota
cl.ici.umn.edu



Mains'l
mainsl.com



The Ohio State University Nisonger Center Institute
nisonger.osu.edu



UCDavis Health Mind
health.ucdavis.edu/mindinstitute



RFP Properties, Inc
rfpproperties.com



Contents

Annual Meeting Sponsors	5
Social Events	7
Student and Early Career Professional Events	8
Hotel Floor Plan	9
Continuing Education	11
Program-at-a-Glance	12
Program Highlights	13
Annual Membership Meeting and Leadership Forum	13
Pre-Conference Sessions	13, 15
Plenary Sessions	16, 29, 35
Concurrent Sessions	17, 20, 24, 30, 33
Post Conference Sessions	36, 39
General Information	41
Posters and Exhibitors Floor Plan	42
Poster Presentations	43
Guide to Exhibitors	53
Leadership Groups Meetings	56
2018–2019 AAIDD Leadership	58



AAIDD Annual Open Membership Forum

Monday, June 24 | 9:00 – 10:00 am

AAIDD members are encouraged to attend the annual membership forum to learn more about the past year's accomplishments and future initiatives of the Association.

ROOM: GREAT RIVER 1



Registration Schedule

Monday..... 8:00 am – 5:30 pm
Tuesday..... 7:00 am – 5:00 pm
Wednesday..... 7:00 am – 3:00 pm
Thursday..... 8:00 am – 10:00 am

Exhibit Schedule

EXHIBIT HOURS

Tuesday, June 25
from 7:30 am – 4:00 pm

Wednesday, June 26
from 7:30 am – 11:00 am

Exclusive exhibit time:

Wednesday from 8:45 – 9:15 am

Join AAIDD

AAIDD is the definitive membership organization and the authoritative source of information for those in the intellectual disability profession.

To explore membership options,

Visit us at www.aidd.org



Knowledge | Support | Empowerment

Sunday, June 23

8:00 – 9:00 pm

President's Reception

Open to all conference attendees at no additional cost

Elizabeth Perkins, PhD, RNLD, FAAIDD, FGSA, President of the AAIDD Board of Directors, invites all attendees to join the Board at this informal reception.

ROOM: KELLOGG SUITE

Monday, June 24

Game starts at 7:05 pm

Night at the Ballpark I: St. Paul Saints vs. Texas AirHogs

Group tickets are sold out for Monday night



Tuesday, June 25

5:00 – 7:00 pm

Poster Presentations and Reception

Open to all conference attendees at no additional cost

Explore emerging research, practice, and policy at the Poster Presentations and Reception.

ROOM: MINNESOTA BALLROOM



7:00 – 8:30 pm

Publications Reception

Open to all conference attendees at no additional cost

Join us at a reception featuring AAIDD book authors and journal editors. Meet your favorite editors and authors in a cocktail party atmosphere.

ROOM: GOVERNORS 4

Co-sponsored
by University
of California,
Davis

7:00 – 8:30 pm

Student and Early Career Professionals (SECP) Reception

Students and early career professionals are invited to this networking reception at no additional cost.

ROOM: STATE 2

Co-sponsored
by OSU
Nisonger
Center

Game starts at 7:05 pm

Night at the Ballpark II: St. Paul Saints vs. Texas AirHogs

Buy your ticket at the registration desk—Tickets \$18

Wednesday, June 26

8:00 – 8:45 am

Awards Breakfast

Join us to recognize AAIDD members and others for their service to the field.

ROOM: GREAT RIVER BALLROOM

If you are a Student or an Early Career Professional, you are especially invited to join us for the following events:



Sunday, June 23

8:00 – 9:00 pm

President’s Reception ROOM: KELLOGG SUITE

Monday, June 24

1:00 – 4:00 pm

SECP Research Symposium
ROOM: GOVERNORS 4



Tuesday, June 25

8:00 – 8:30 am

New Attendee Orientation ROOM: GOVERNORS 2

5:00 – 7:00 pm

Poster Presentations and Reception
ROOM: MINNESOTA BALLROOM

7:00 – 8:30 pm

Student and Early Career Professionals Networking Reception
ROOM: STATE 2



Wednesday, June 26

12:00 – 1:00 pm

Student and Early Career Professionals Luncheon

*Lunch tickets required—Lunch fee \$15
Limited tickets available at registration*

ROOM: GREAT RIVER 1

4:00 – 6:00 pm

Post-conference Session: Writing for Publication
ROOM: GOVERNORS 2

Silent Auction

A silent auction will be held during regular exhibit hours. Bid on items of your choice!

Bidding closes at 11:00 am on Wednesday, June 26.

Silent Auction proceeds will benefit self-advocacy organizations in Wisconsin and Minnesota:

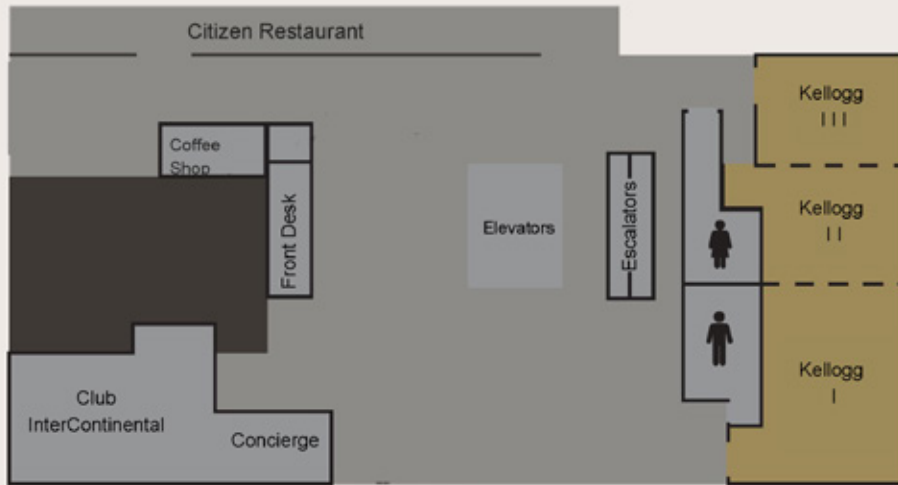
People First Wisconsin



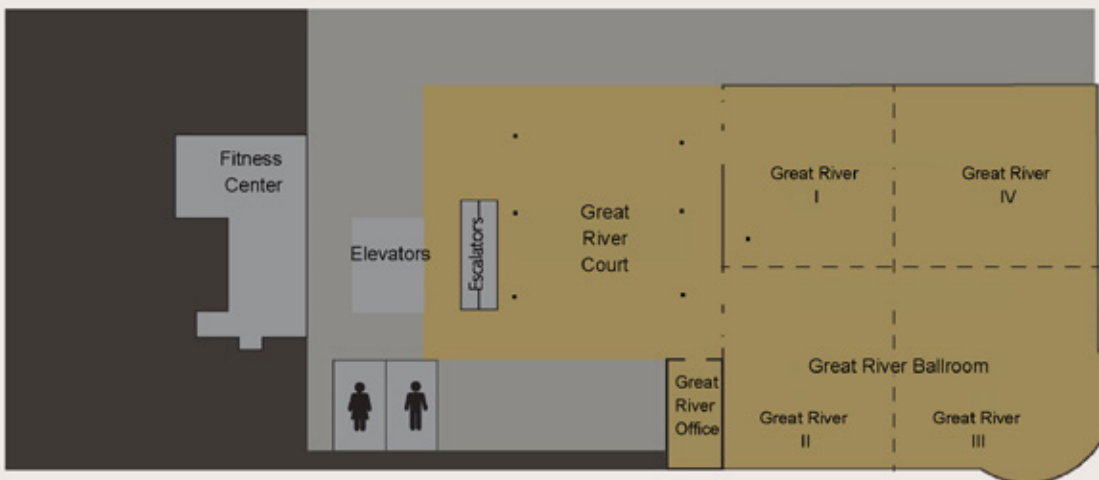
See Our ~~dis~~Ability

ACT
Advocating Change Together

Lobby Level Meeting Spaces

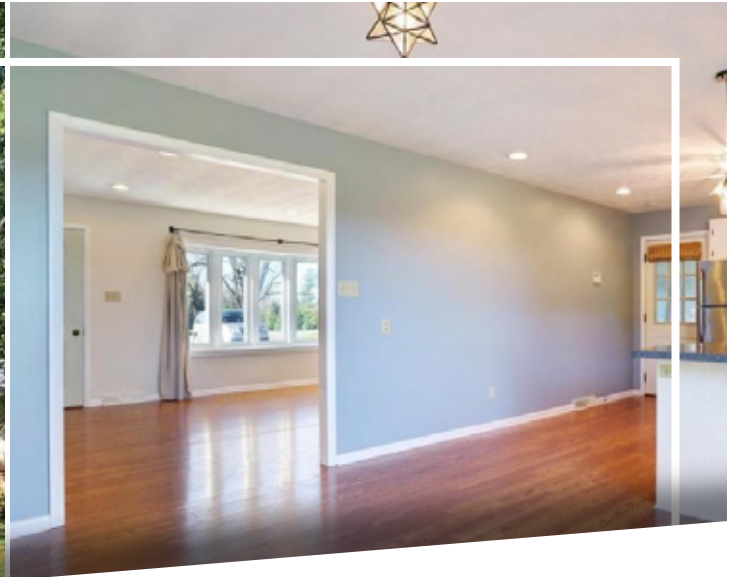
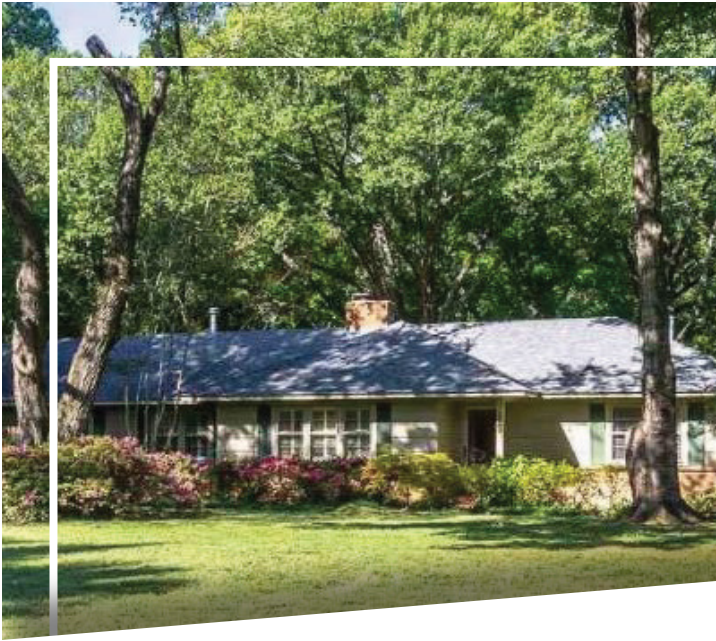


First Level Meeting Spaces



Lower Level Meeting Spaces





PROVIDING HOUSING & RELATED HEALTHCARE FACILITIES FOR PEOPLE WITH DISABILITIES

1600 Homes | 41 States | 6500 Served



SALE LEASEBACK



REAL ESTATE



ACQUISITIONS

SCIOTO.COM | 1.800.930.2892

Continuing Education Offerings for Pre- and Post-Conference Sessions

The University of Tennessee Health Science Center (UTHSC) is approved by the American Psychological Association to sponsor CE for psychologists. UTHSC maintains responsibility for this program and its content. UTHSC is offering these activities for as many as 5.0 CE credits.

This program is Approved by the National Association of Social Workers (Approval # 886593756-3727) for up to 8 continuing education contact hours.

To receive continuing education credits you must:

- 1) Pay the CE processing fee through registration
- 2) Have a room monitor sign off on your attendance card at the end of each session you attend
- 3) Complete and turn in a session evaluation

SESSION	SOCIAL WORK (NASW)	PSYCHOLOGY (APA)
MONDAY, JUNE 24 1:00 PM – 4:00 PM		
Amici Curiae: AAIDD As A Friend of the Court	3	—
Breaking Through a Behavioral Crisis: Practical and Ethical Considerations	3	3
Emerging Best Practices in Healthcare for People with IDD: Lessons Learned in Research, Policy and Practice	3	—
Supporting Augmentative and Alternative Communication in Inclusive Classrooms	3	3
Helping People with Intellectual Disability Understand and Plan for End of Life	3	3
2019 SECP Research Symposium	—	—
MONDAY, JUNE 24 4:30 PM – 6:00 PM		
Invaluable: The Unrecognized Profession of Direct Support (film screening and panel discussion)	—	—
WEDNESDAY, JUNE 26 4:00 PM – 6:00 PM (complimentary)		
Writing for Publication	2	2
Is This All We Got? Using a LifeCourse Lens to Rethink Service Systems Supporting People with Intellectual Disability	—	—
By the Book: Writing a Book for Professional Publication	2	2
The Eugenics Crusade (film screening)	—	—
THURSDAY, JUNE 27 9:00 AM – 12:00 PM		
All Means All: Community Living for People with Intellectual and Developmental Disabilities	3	—
Finance for the Non-Finance Disability Professional	3	—

Grievance procedure and participant fee statement/refund policies are available to all participants and may be located on the conference website at www.aaid.org.



	SUNDAY	MONDAY	TUESDAY	WEDNESDAY	THURSDAY
Morning		<p>Continental Breakfast 7:30 – 9:00 am</p> <p>Open Membership Meeting and Leadership Forum 9:00 – 10:00 am</p> <p>The Assembly of Geographic Regions & The Assembly of Interest Networks Meetings 10:15 – 11:30 am</p>	<p>Continental Breakfast 7:00 – 8:30 am</p> <p>Leadership Groups Business Meetings 7:30 – 8:30 am</p> <p>Exhibits Open 7:30 am – 4:00 pm</p> <p>New Attendees Orientation 8:00 – 8:30 am</p> <p>Opening Plenary Session 9:00 – 10:30 am</p> <p>Break 10:30 – 10:45 am</p> <p>Concurrent Sessions A 10:45 – 12:15 pm</p>	<p>Interest Networks Business Meetings 7:00 – 8:00 am</p> <p>Exhibits Open 7:30 – 11:00 am</p> <p>Awards Breakfast 8:00 – 8:45 am</p> <p>Exclusive Exhibit Time 8:45 – 9:15 am</p> <p>Plenary Session 9:15 – 10:45 am</p> <p>Break 10:45 – 11:00 am</p> <p>Concurrent Sessions D 11:00 am – 12:00 noon</p>	<p>Religion & Spirituality Interest Network Forum* 9:00 am – 12:00 pm</p> <p>Post-Conference Sessions* 9:00 am – 12:00 pm</p>
Noon		<p>Buffet Lunch Available* 11:30 am – 1:00 pm</p>	<p>Interest Network Luncheons & Buffet Lunch Available* 12:15 – 1:45 pm</p>	<p>SECP Luncheon* 12:00 noon – 1:00 pm</p> <p>Psychology Interest Network Lunch Meeting* 12:00 noon – 1:00 pm</p>	
Afternoon		<p>Pre-Conference Sessions* 1:00 – 4:00 pm</p>	<p>Concurrent Sessions B 1:45 – 3:15 pm</p> <p>Break 3:15 – 3:30 pm</p> <p>Concurrent Sessions C 3:30 – 5:00 pm</p>	<p>Concurrent Sessions E 1:00 – 2:00 pm</p> <p>Break 2:00 – 2:15 pm</p> <p>Closing Plenary Session 2:15 – 3:45 pm</p>	
Evening	<p>Board Meeting 5:00 – 8:00 pm</p> <p>President's Reception 8:00 – 9:00 pm</p>	<p>Complimentary Pre-Conference Session 4:30 – 6:00 pm</p> <p>Night at the Ballpark* St. Paul Saints vs. Texas AirHogs 7:05 pm</p>	<p>Poster Session and Reception 5:00 – 7:00 pm</p> <p>Publications Reception 7:00 – 8:30 pm</p> <p>Student and Early Career Professionals Networking Reception 7:00 – 8:30 pm</p> <p>Night at the Ballpark* St. Paul Saints vs. Texas Air Hogs 7:05 pm</p>	<p>Complimentary Post Conference Sessions 4:00 – 6:00 pm</p> <p>Religion & Spirituality Interest Network Dinner* 6:30 pm</p>	

* Additional fee required

Sunday, June 23

5:00 pm – 8:00 pm

Board of Directors Meeting

*Presiding: Elizabeth Perkins, PhD, RNLD, FAAIDD, FGSA,
President, AAIDD Board of Directors*

8:00 pm – 9:00 pm

President's Reception

Open to all conference attendees at no additional cost.

ROOM: KELLOGG SUITE

Monday, June 24

Registration Hours

8:00 am – 5:30 pm

7:30 – 9:00 am

Complimentary Continental Breakfast

ROOM: GREAT RIVER 1

9:00 – 10:00 am

Annual Open Membership Meeting and Leadership Forum

*Presiding: Elizabeth Perkins, PhD,
RNLD, FAAIDD, FGSA
President, AAIDD Board of Directors*

ROOM: GREAT RIVER 1

10:15 – 11:30 am

Joint Meetings of The Assembly of Geographic Interests

*Presiding: Len Abbeduto, PhD, FAAIDD
Vice President, AAIDD Board of Directors*

and The Assembly of Professional Interests

*Presiding: Laura Lee McIntyre, PhD, FAAIDD
President-Elect, AAIDD Board of Directors*

(By invitation only)

ROOM: GOVERNORS 2

11:30 am – 1:00 pm

Lunch

Fee: \$20

Buffet lunch is available for an additional fee. A limited number of tickets are available for purchase at the registration desk.

ROOM: GREAT RIVER 1

PRE-CONFERENCE SESSIONS

Additional fee required

1:00 – 4:00 pm

Fee: \$35

2019 SECP Research Colloquium: Developing a Research Line of Inquiry

This session is organized by the AAIDD Student and Early Career Professional and Research Interest Networks.

Co-sponsored
by Temple
University
IOD

*Sheida Raley, MEd, University of Kansas
Heather J. Williamson, DrPH, Northern Arizona University
Jim Lemanowicz, MBA, Temple University
Claire Baniak, MA, Spalding University
Lyndsey Conradi, MEd, University of Utah
Raquel Alveirinho Correia, PhD, Universidade de Coimbra
Robin Dodds, PhD, California State University Los Angeles
Carrie Eichelberger, MS, University of Utah
Samantha Gross Toews, MEd, University of Kansas
Ariel Schwartz, MS, Boston University*

The purpose of the research colloquium is to provide AAIDD students and early career professionals (SECPs) with an opportunity to present their research and network with leading intellectual and developmental disability researchers and policymakers. Participants will receive feedback on how to translate their work into meaningful research, policy, and practice.

ROOM: GOVERNORS 4

1:00 – 4:00 pm

Fee: \$45

Amici Curiae: AAIDD As A Friend of the Court A Presentation of AAIDD's Vital Role in United States Supreme Court Cases as Keeper of the Science: Past, Present, and Future (approved for 3 social work CEs)

*James W. Ellis, JD, University of New Mexico School of Law
Ann M. Delpha, JD, University of New Mexico School of Law*

AAIDD has contributed to the United States Supreme Court's decision-making about people with ID for the past four decades. We will discuss the intersection of law and clinical science; explain how and when AAIDD has been a "friend of the Court" in years past, and the outcomes it has helped to shape; explain the strategy behind when AAIDD has chosen to step in and offer its expertise and when it has not; and discuss potential future directions for AAIDD as a unique advocate of the science behind the diagnosis of and support for people with intellectual disability.

ROOM: STATE 2

1:00 – 4:00 pm

Fee: \$45

Breaking Through A Behavioral Crisis: Practical And Ethical Considerations

(approved for 3 psychology and 3 social work CEs)

Vincent M. Chesney, MS, FAAIDD, Commonwealth of Pennsylvania

Justin Kuehl, PsyD, FAAIDD, Milwaukee County Behavioral Health Division

While it may be easy to recognize a behavioral crisis when it occurs, it can be exceedingly difficult to predict or successfully manage in the moment. Oftentimes, there are multiple underlying issues that contribute to an emerging situation. This presentation will review many of the salient factors that can influence behavioral crises for people with IDD. The discussion will include the impact of co-occurring mental health conditions, medications, alternative treatments, influence of social supports, and resource availability. There are inherent ethical issues that should be considered, so the presentation will review the principle of respect for autonomy and the associated issues regarding decisional capacity. Lastly, the presentation will review a crisis intervention program based in Milwaukee, Wisconsin that adheres to a best practice model.

ROOM: STATE 3

1:00 – 4:00 pm

Fee: \$45

Emerging Best Practices In Healthcare for People with IDD: Lessons Learned In Research, Policy, and Practice

(approved for 3 social work CEs)

Melissa DiSipio, MSA, FAAIDD, Philadelphia Coordinated Health Care

David A. Ervin, MA, FAAIDD, Jewish Foundation for Group Homes

Susan Havercamp, PhD, FAAIDD, The Ohio State University

Yona Lunsky, PhD, FAAIDD, University of Toronto; CAMH Azrieli Centre for Adult Neurodevelopmental Disabilities and Mental Health

Avra Selick, MA, CAMH Centre for Addiction and Mental Health

This interactive, pre-conference session is a follow-up to last year's Managed Care session but will be solutions-focused. Presenters will briefly outline historical and current barriers to culturally competent healthcare experienced by people with intellectual and developmental disabilities (IDD) through the lens of practice and policy. This will include an examination of barriers to education for medical and other health science professionals treating individuals with IDD and competencies developed, barriers to receiving accessible health promotion and wellness resources in the community, and challenges to establishing specialty healthcare for people with IDD (i.e., so-called Developmental Medicine). From that foundation, presenters will review current best practices that exist and/or are emerging in the US and Canada, and will engage in a discussion of current and potential policy

and research priorities associated with issues related to accessing high quality, culturally competent, community-based healthcare designed with and for with IDD, as well as opportunities and challenges around implementing of emerging, evidence-based practices, interventions and policies to promote optimal health and wellness. The discussion will orient to solutions and, through discussion with attendees and presenters, establish a research, policy and practice agenda, consistent with the 2015 National Goals Issue Brief on Health and Wellness for People with IDD.

ROOM: KELLOGG 1

1:00 – 4:00 pm

Fee: \$45

Supporting Augmentative and Alternative Communication In Inclusive Classrooms

(approved for 3 psychology and 3 social work CEs)

Jacqueline Kearns, EdD, University of Kentucky

Jane Kleinert, PhD, University of Kentucky

Harold Kleinert, EdD, University of Kentucky

A recent review of the literature on identifying practices for augmentative and alternative communication (AAC) use for students with significant intellectual disability in inclusive classrooms reveals that four factors support students' use of AAC devices. Those factors include 1) peer mediated supports, 2) aided language modeling, 3) professional collaboration and 4) planning for implementation. This session will focus on strategies for implementing these four factors to improve AAC use, social relationships, and academic learning for students with intellectual disabilities and complex communication needs.

ROOM: KELLOGG 3

1:00 – 4:00 pm

Fee: \$45

Helping People with Intellectual Disability Understand and Plan for End of Life

(approved for 3 psychology and 3 social work CEs)

Roger J. Stancliffe, PhD, FAAIDD, University of Sydney

Michele Y. Wiese, PhD, Western Sydney University

This workshop will involve a detailed overview of how to teach people with ID about end-of-life. The session will include (i) a demonstration of how to use the free online resource Talking End of Life...with people with intellectual disability (TEL), (ii) familiarization of participants with other end-of-life training resources, and (iii) examination of how disability services, and families could use these resources. TEL features many short videos of real people with ID and disability support staff. These videos will be used to illustrate end-of-life issues and to demonstrate a range of teaching methods for use in everyday natural contexts. The workshop will also introduce participants to three psychometrically-robust end-of-life assessment tools for people with ID related to (i) understanding the concept of death, (ii) end-of-life planning, and (iii) fear of death.

ROOM: KELLOGG 2

COMPLIMENTARY PRE-CONFERENCE SESSION

4:30 – 6:00 pm

Film Screening and Panel Discussion:

Invaluable: The Unrecognized Profession of Direct Support

Jerry Smith, MBA, University of Minnesota
Amy Hewitt, PhD, FAAIDD, University of Minnesota
Hunter Sargent, Consultant
Nikeeta Smith, Direct Support Professional



Join us for a screening of the newest film produced by the Research and Training Center on Community Living, University of Minnesota (Jerry Smith, producer/director), followed by a short panel discussion. Complimentary snacks and a cash bar round out the event.

Open to all conference attendees; no additional cost to attend.

ROOM: GREAT RIVER 1

6:00 – 7:00 pm

Local Arrangements Committee Reception

By invitation only

7:05 pm

Night at the Ballpark I: St. Paul Saints vs. Texas AirHogs

All attendees are invited to join us for a Night at the Ballpark.

CHS Field is within walking distance from the hotel (about a 14-minute walk).

Address: CHS Field, 360 Broadway St., St. Paul

Open to all conference attendees
Tickets \$18

Group tickets sold out



StationMD



The Telemedicine Solution for People with I/DD

- Decrease emergency department visits and hospital admissions
Expand access to physicians with improved efficiency
Reduce healthcare and provider costs



Learn more at StationMD.com



Tuesday, June 26

Registration Hours

7:00 am – 5:00 pm

Exhibits Open

from 7:30 am – 4:00 pm

Complimentary Continental Breakfast

available from 7:00 – 8:30 am

For a complete list of Exhibitors, see pages 53–56.

INTEREST NETWORKS MEETINGS

7:30 – 8:30 am

Creative Arts Therapies Interest Network

Presiding: Yumi Shirai, PhD, University of Arizona

ROOM: STATE 2

7:30 – 8:30 am

Communication Disorders Interest Network

Presiding: Angela John Thurman, PhD, University of California, Davis

ROOM: STATE 3

7:30 – 8:30 am

Leadership and Management in Community Living Interest Network

Presiding: Sharon Gomez, FAAIDD, Evergreen Life Services & Joanna Pierson, PhD, FAAIDD, The Arc of Frederick County

Presentation: *Practices that Promote Quality Outcomes*

Speaker: Amy Hewitt, PhD, FAAIDD, University of Minnesota

ROOM: GOVERNORS 3

7:30 – 8:30 am

Multicultural Concerns Interest Network

Presiding: Ellis "Pat" Craig, PhD, FAAIDD, Consultant

ROOM: GOVERNORS BOARDROOM

7:30 – 8:30 am

Technology Interest Network

Presiding: Emily Shea Tanis, PhD, FAAIDD, University of Colorado

ROOM: GOVERNORS 4

8:00 – 8:30 am

Welcome and Orientation for First-Time Annual Meeting Attendees

Presiding: Laura Lee McIntyre, PhD, FAAIDD
President-Elect, AAIDD Board of Directors

If this is your first AAIDD Annual Meeting, please join us for this short and informative orientation.

ROOM: GOVERNORS 2

OPENING SESSION

9:00 am – 10:30 am

OPENING SESSION

Welcoming Remarks

Liz Perkins, PhD, RNLD, FAAIDD, FGSA
President, AAIDD Board of Directors

PLENARY SESSION



Family-Based Practices to Promote Well-Being: A Personal Journey of Knowledge Translation

Laura Lee McIntyre, PhD, FAAIDD
President-Elect, AAIDD Board of Directors
University of Oregon

ROOM: GREAT RIVER BALLROOM

CONCURRENT A

10:45 am – 12:15 pm

A1—EVALUATING AND MANAGING PAIN AND STRESS

Moderator: Kruti Acharya, MD, University of Illinois at Chicago and AAIDD Health & Wellness Interest Network

Evaluating the Pain and Discomfort Scale to Assess Spasticity-Related Pain in Cerebral Palsy

Alyssa Merbler, University of Minnesota
 Chantel Barney, PhD, Gillette Children’s Specialty Healthcare
 Kristin Frenn, MPH, Gillette Children’s Specialty Healthcare
 Breanne Byiers, PhD, University of Minnesota
 Frank Symons, PhD, FAAIDD, University of Minnesota

Measuring Stress in Adults with Intellectual Disability: Hormonal Bio-Markers, Self, and Proxy Report

Haleigh Scott, PhD, University of California, Davis
 Cortisol Response to Standardized Pain and Sensory Examinations in Rett Syndrome
 Breanne Byiers, PhD, University of Minnesota
 Alyssa Merbler, University of Minnesota
 Kristin Frenn, MPH, Gillette Children’s Specialty Healthcare
 Chantel Barney, PhD, Gillette Children’s Specialty Healthcare
 Frank Symons, PhD, FAAIDD, University of Minnesota

ROOM: GOVERNORS 4

A2—FACILITATING SIBLING SUPPORTS

Moderator: Emily Shea Tanis, PhD, FAAIDD, University of Colorado and AAIDD Technology Interest Network

Future Planning as Reported by Adult Siblings of Individuals with Disabilities

Ellen Casale, EdS, MEd, Vanderbilt University Medical Center
 Meghan M. Burke, PhD, University of Illinois at Urbana-Champaign
 Richard C. Urbano, PhD, Vanderbilt University Medical Center
 Catherine K. Arnold, MS, University of Illinois at Chicago
 Robert M. Hodapp, PhD, Vanderbilt University Medical Center

Multiple Perspectives About Family Quality of Life: People with Intellectual Disability, Parents and Siblings

Raquel Alveirinho Correia, PhD, Universidade de Coimbra
 Maria Joo Seabra Santos, PhD, Universidade de Coimbra

ROOM: GOVERNORS 2

A3—PRACTICING IN THE INTERSECTIONALITY OF DISABILITY AND CULTURE

Moderator: Joyce Loudon, PhD, Louisiana Office for Citizens with Developmental Disabilities and AAIDD Board of Directors

Perceptions of Self-Determination for Black Transition-Aged Youth with Intellectual Disability

LaRon Scott, EdD, Virginia Commonwealth University
 Colleen Thoma, PhD, FAAIDD, Virginia Commonwealth University
 Parthenia Dinora, PhD, Virginia Commonwealth University
 Dana Yarbrough, PhD, Virginia Commonwealth University
 Mauretta Copeland, Virginia Commonwealth University
 Katherine Brendli, MAT, Virginia Commonwealth University

Contemporary Intersections of Disability and Immigration in the LatinX Community

Grace Cooper, Temple University
 Sally Gould-Taylor, PhD, Temple University

How Practitioners Can Create a Cultural Safe Space: What do We Learn from Studies of Asian Immigrant Parents of Children with Developmental Disabilities?

I-Ting Hwang, MS, Boston University
 Jessica Kramer, PhD, University of Florida
 Ellen Cohn, ScD, Boston University

ROOM: KELLOGG 3

A4—OPEN FORUM: TOWARDS AN INTEGRATIVE APPROACH TO INTELLECTUAL DISABILITY

Robert Schalock, PhD, FAAIDD, Hastings College (Emeritus)
 Ruth Luckasson, JD, FAAIDD, University of New Mexico
 Marc J. Tassé, PhD, FAAIDD, The Ohio State University

A major emphasis of the upcoming 12th edition of the AAIDD terminology and classification manual will be an integrative approach to ID. An integrative approach to ID combines current knowledge and best practices into a holistic, unified, and systematic perspective that increases understanding and facilitates precise, valid, and effective decisions, recommendations, and actions. An integrative approach to ID reflects the ongoing transformation in understanding human functioning within the field of IDD, including the interrelatedness of limitations in human functioning, human and legal rights of persons with disability, eligibility for services and supports based on significant functional limitations in major life activity areas, and the focus on individualized supports provided within inclusive community-based environments. The Open Forum will request those in attendance to suggest how an integrative approach to ID can be furthered through: (a) the terms and concepts used; (b) the definition, diagnosis, classification, and subgroup classification in ID; and (c) the provision of systems of support to people with ID.

ROOM: GOVERNORS 3

A5—ISSUE BRIEFS: POLICY

Moderator: Amie Lulinski, PhD, FAAIDD, University of Colorado and AAIDD Board of Directors

10:45 am – 12:15 pm | ROOM: GOVERNORS 1

1. **Living Well Georgia: A Model Demonstration Program to Enhance Quality in Home and Community Services for Adults with IDD—Successes and Challenges to Implementing Evidence Based Practices in Year 1**
Carol Britton Laws, PhD, FAAIDD, University of Georgia
2. **Unintended Consequences: When New Policies Impact People with Disabilities in Unexpected Ways**
Kara Ayers, PhD, University of Cincinnati
3. **Rigorous Assessment of Social Validity: A Scoping Review of a 40-year Conversation**
Melinda Snodgrass, PhD, Illinois State University
James Kretzer, Vanderbilt University Medical Center
Elizabeth E. Biggs, PhD, University of Illinois at Urbana-Champaign
Moon Y. Chung, PhD, University of Illinois at Urbana-Champaign
4. **Developing a Social Connectedness Measure for People with Disabilities: An Assessment Tool for Organizations Serving People with Intellectual and Developmental Disabilities**
Xueqin Qian, PhD, University of Minnesota
Nicole Weber, University of Minnesota
Wei Song, University of Minnesota
Matthew Roberts, MA, University of Minnesota
Renata Ticha, PhD, University of Minnesota
Brian Abery, PhD, University of Minnesota
5. **Researching the Use of Advanced ICT for Increasing Self-Determination of People with ID: The INSENSION Project**
Michal Kosiedowski, PhD, Poznańskie Centrum Superkomputerowo-Sieciowe
Torsten Kramer, MS, Heidelberg University of Education
Meike Engelhardt, MS, Heidelberg University of Education
Justyna Tyrakowska, PhD, Na Tak Association
Mitja Lustrek, PhD, Jozef Stefan Institute
Carmen Campomanes Alvarez, Celtic Technology Centre
Joanna Starosta, MBA, Harpo Sp. z.o.o.
6. **The Delicate Balance between Independence and Belonging: Flexibility in Housing Options for People with IDD**
Elizabeth Schiltz, JD, University of St. Thomas
7. **Collecting and Using Data to Address DSP Workforce Challenges**
Dorothy Hiersteiner, MPP, Human Services Research Institute
Mary Lou Bourne, NASDDDS
Amy Hewitt, PhD, FAAIDD, University of Minnesota
8. **Poverty, Disability, and Tax-Advantaged Savings Account Utilization: A National Appraisal of ABLE Account Programs as We Near the 5-Years Anniversary**
Stephen McGarity, PhD, University of Tennessee
9. **Developing Data-Informed Policy Recommendations with Stakeholders**
Colleen Kidney, Human Services Research Institute
Jami Petner-Arrey, PhD, Human Services Research Institute
Brittany Taylor, MSSW, Human Services Research Institute
John Agosta, PhD, Human Services Research Institute
10. **How Friendships Change and Social Exclusion of Youth with IDD**
Marisa Fisher, PhD, Michigan State University
Cynde K. Josol, Michigan State University
Katie Cwiakala, Michigan State University
Rachel Welling, Michigan State University
Jessica Douglas, Michigan State University
11. **Aging in an Aging World: Senior Citizens with Intellectual and Developmental Disabilities, Challenges and Solutions**
Alanna Hendren, Developmental Disabilities Association
12. **New Directions in Health Surveillance: Data to Inform Policy and Programs at the National and State Levels**
Susan M. Haverkamp, PhD, FAAIDD, The Ohio State University
Alexandra Bonardi, MHA, FAAIDD, Human Services Research Institute

A6—POSTER SYMPOSIUM

Transition, Postsecondary Education & Employment

Moderator: Joanna Pierson, PhD, FAAIDD, The Arc of Frederick County and AAIDD Leadership and Management in Community Living Interest Network

10:45 am – 12:15 pm | ROOM: KELLOGG 1

BOARD #1

Making the Community your Classroom: The Importance of Coordinating Instruction in Multiple Settings
Heather Bish-Martin, EdD, Cape Cod Community College

BOARD #2

A Critical Review of 13 Years of Universal Design for Learning in Postsecondary Education for Students with and Without Disabilities

Soonhwa Seok, PhD, Korea University; University of Kansas

Boaventura Dacosta, PhD, Solers Research Group

BOARD #3

Developing Youth Leadership Opportunities for Adolescents with Intellectual Disability Through Inclusive School-Based Extracurricular Involvement

Emily Van Gaasbeek, EdM, University of Massachusetts Boston

Lydia Smith, University of Massachusetts Boston

Karen Osborne, University of Massachusetts Boston

Holly Jacobs, MA, University of Massachusetts Boston

Sara Prescott, Special Olympics North America

BOARD #4

Developing Post-Secondary Inclusive Higher Education Opportunities for Young Adults with IDD at the Intersection of Research and Practice

Alia Pustorino, EdD, Duquesne University

Meghan Blaskowitz, DrPH, Duquesne University

Ann Marie Licata, PhD, Millersville University

BOARD #5

Use of a Person-Centered Planning Approach to Guide Community-Based Vocational Supports for Adults with Intellectual and Developmental Disabilities

Meghan Blaskowitz, DrPH, Duquesne University

Abigail Gore, Duquesne University

Amy Castagnino, Duquesne University

Katrina McNally, Duquesne University

BOARD #6

Parent-Professional Partnership

Emily Dow, Texas Christian University

Spencer Evans, Texas Christian University

Aesha John, PhD, Texas Christian University

BOARD #7

Exploring Predictors of Transition Planning, Participation, and Future Goal Aspirations of Secondary Students with Intellectual and Developmental Disabilities

David Johnson, PhD, FAAIDD, University of Minnesota

Yi Chen Wu, PhD, University of Minnesota

BOARD #8

An Analysis of States' Pre-Employment Transition Services Policies

Sarah Carlson, University of Kansas

BOARD #9

Children with Disabilities in Zambia: A Workforce Development Project to Support Families

Renee Hepperlen, PhD, St. Catherine University

Paula Rabaey, PhD, St. Catherine University

Mary Hearst, PhD, St. Catherine University

Jennifer Miller, PhD, St. Catherine University

Donna DeGracia, MPAS, St. Catherine University

BOARD #10

Transitioning Youth with Disabilities and Employment: Developing an Online Interactive Intervention

Rachelle Hole, PhD, University of British Columbia

Steven Barnes, PhD, University of British Columbia

Leyton Schnellert, PhD, University of British Columbia

Nathan Ngieng, MEd, Abbotsford School District #34

BOARD #11

Effects of A Career Development Intervention for Young Adults with Autism

Eván Dean, PhD, University of Kansas Medical Center

BOARD #12

Adults with ID: Employment Outcomes After College

Lauren Bruno, PhD, University of Iowa

BOARD #13

Building Skills and Confidence: Effects of Soft Skills and Employment Readiness Skills Training for Youth with Intellectual and Developmental Disabilities

Blair Dammerman, MA, Michigan State University

Alicia Strain, MEd, Michigan State University

BOARD #14

Effects of a Self-Advocacy Intervention on Requesting Academic Accommodations for Students with Intellectual and Developmental Disabilities in Post-Secondary Education

Katherine Brendli, MAT, Virginia Commonwealth University

12:15 – 1:45 pm

Buffet Lunch

Fee \$20

Lunch is available for purchase for all attendees—a limited number of lunch tickets are available at the registration desk.

ROOM: GREAT RIVER 1

Come Visit Our Exhibitors and Learn About The Latest Resources, Technology, & Services To Enhance Your Work!

12:15 – 1:45 pm

INTEREST NETWORKS LUNCH MEETINGS

The following groups will meet over lunch.

Ticket required (lunch fee \$20)

Limited number of tickets are available at registration

- Education Interest Network
- Gerontology Interest Network
- Health and Wellness Interest Network
- Legal Process & Advocacy Interest Network
- Religion & Spirituality Interest Network
- Research Interest Network
- Social Work & Families Interest Networks (joint meeting)

ROOM: GREAT RIVER 1



CONCURRENT B SESSIONS

1:45 – 3:15 pm

B1—IMPROVING HEALTH CARE

Moderator: Susan Havercamp, PhD, FAAIDD, The Ohio State University and AAIDD Board of Directors

Improving Cancer Screening Surveillance of Native American Women with IDD

Bailey Lockwood, University of Arizona

Julie Armin, PhD, University of Arizona

Heather Williamson, DrPH, Northern Arizona University

Virginia Warren, MPA, Arizona Department of Health Services

The Obscuring Effect of Coding Developmental Disability as the Underlying Cause of Death on Mortality Trends for Adults with Developmental Disability

Scott Landes, PhD, Syracuse University

J. Dalton Stevens, MA, Syracuse University

Margaret A. Turk, MD, SUNY Upstate Medical Center

Utilizing a Knowledge-To-Action Framework to Systematically Reduce Falls in People with IDD

Courtney Dutra, MPA, University of Massachusetts Medical School

Alexandra Bonardi, MHA, FAAIDD, Human Services Research Institute

Emily Lauer, MPH, University of Massachusetts Medical School

ROOM: GOVERNORS 2

B2—ENHANCING INCLUSION WITHIN DISTINCTIVE POPULATIONS

Moderator: Ellis “Pat” Craig, PhD, FAAIDD, Consultant and AAIDD Multicultural Concerns Interest Network

AAIDD Delegation: Inclusion of people with IDD in Zambia and South Africa

Sarah Hall, PhD, FAAIDD, University of Minnesota

Mikala Mukongolwa, MEd, University of Zambia

Michelle Gamber, DrPH, MA, Shenandoah University

Judith Gross, PhD, FAAIDD, Indiana University

Lessons from Somali and LatinX Diversity & Disability Fellows in Minnesota

Rebecca Dosch Brown, MFA, University of Minnesota

Heidi Eschenbacher, PhD, University of Minnesota

Jennifer Hall-Lande, PhD, University of Minnesota

Aswak Hassan, University of Minnesota

Sheyhan Gelle, University of Minnesota

Faviola Estrada, University of Minnesota

Ruth Evangelista, University of Minnesota

continued next page

Challenges and Opportunities for People with IDD in Post-Soviet Countries

Renata Ticha, PhD, University of Minnesota
Brian Abery, PhD, University of Minnesota
Olga Telna, PhD, Kharkiv Academy for Humanitarian and Educational Studies, Ukraine
Armine Babayan, MA, Inclusive Elementary School #20, Armenia

ROOM: GOVERNORS 3

B3—IMPROVING COMMUNICATION IN ASSESSMENT

Moderator: Angela John Thurman, PhD, University of California, Davis and AAIDD Communication Disorders Interest Network

Comparison of Key Outcome Indicators for Programming Targeting Young Adults with Autism Spectrum Disorder

Annie Goerdt, University of Minnesota
Katie Beard, University of Minnesota
Carley Matsumoto, MPP, Minnesota Independence College & Community
Rebekah Hudock, PhD, University of Minnesota

Assisting Individuals with Intellectual Disability Understand Survey Items: Do Emojis Help Participants Express Themselves?

Jean-Baptiste Quillien, University of Minnesota
Matthew Roberts, MA, University of Minnesota
James Houseworth, PhD, University of Minnesota
Amber Pomponio, PhD, Temple University
Laura Slugg, PhD, Temple University
Renata Ticha, PhD, University of Minnesota
Brian Abery, PhD, University of Minnesota

Comparing the Impact of Online and Paper-and-Pencil Administration of the Self-Determination Inventory: Student Report

Sheida K. Raley MEd, University of Kansas
Karrie A. Shogren, PhD, FAAIDD, University of Kansas

ROOM: GOVERNORS 4

B4—IMPLEMENTING EDUCATIONAL SUPPORTS FOR STUDENTS WITH COMPLEX NEEDS

Moderator: Deborah Taub, PhD, OTL Education Solutions and AAIDD Education Interest Network

Alignment of Supplementary Aids and Services with Student Needs and Placement

Samantha Gross Toews, MEd, University of Kansas
Russell Johnston, MSE, University of Kansas
Jennifer Kurth, PhD, University of Kansas
Andrea Ruppap, PhD, University of Wisconsin-Madison

Jessica McQueston, MSE, University of Wisconsin-Madison
Katie McCabe, MSE, University of Wisconsin-Madison

Literacy Instruction for Students with Complex Support Needs in Postsecondary Settings

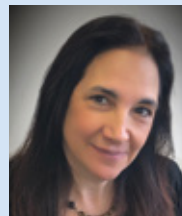
Susan Copeland, PhD, FAAIDD, University of New Mexico
Alison Zagona, PhD, University of New Mexico

Effects of a Peer-Supported Implementation of the Self-Determined Learning Model of Instruction (SDLMI) on Students with Severe Disabilities and their Peers Without Disabilities: Acquisition of Academic Skills, and Perceptions of Self-Determination and School Connectedness

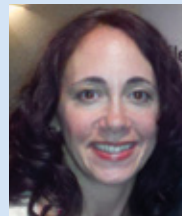
Carrie Eichelberger, MS, University of Utah
John McDonnell, PhD, University of Utah
Jessica Bowman, MEd, University of Utah
Olivia Coleman, MEd, University of Utah
Lyndsey Conradi, MEd, University of Utah
Michael Farrell, MEd, University of Utah

ROOM: KELLOGG 3

Meet the Newly Elected Members of the AAIDD Board of Directors



Elisa Velardo,
MMHS, FAAIDD
 Vice President



Melissa DiSipio,
MSA, FAAIDD
 Secretary-Treasurer



Alexandra Bonardi,
MHA, FAAIDD
 Member-at-Large

B5—ISSUE BRIEFS: PRACTICE

Moderator: Laura Lee McIntyre, PhD, FAAIDD, University of Oregon and AAIDD Board of Directors

1:45 pm – 3:15 pm | ROOM: GOVERNORS 1

- 1. Peer Review of Behavior Supports (PRoBeS) Committee System: Integration of TATE with PRoBeS Approaches and Supportive Materials**
Paul Kolstoe, PhD, FAAIDD, University of North Dakota
Holly E. Johnson, MS, DD Behavior Health Services
Heidi J. Paulson, PsyD, Consultant
Matthew D. Russell, MS, South Dakota State University
- 2. Caregiver Supports: Dementia Capable Service Systems for People with Intellectual and Developmental Disability and Dementia**
Christine Clifford, MPH, University of Massachusetts Medical School
Sharon Oxx, Massachusetts Department of Developmental Services
Kathryn Service, PhD, Massachusetts Department of Developmental Services
Julie Moran, DO, Massachusetts Department of Developmental Services
- 3. Sexual Abuse Prevention and Relationship Development Interventions for Individuals with Intellectual and Developmental Disabilities**
Rhonda Black, EdD, University of Hawai'i
Rebecca Kammes, MA, Michigan State University
- 4. Getting by with a Little Help from my Friends: The Amount of Informal Support Received by Adults with Intellectual and Developmental Disabilities**
Meghan M. Burke, PhD, University of Illinois at Urbana-Champaign
Kelli Sanderson, PhD, California State University Long Beach
- 5. The Benefits to Hiring Individuals with Intellectual and Developmental Disabilities: Employer's Perspectives**
Rachelle Hole, PhD, University of British Columbia
Taylor Wells, MSW, University of British Columbia
Shelly Ben-David, PhD, University of British Columbia
John Graham, PhD, University of British Columbia
- 6. 360: A Contemporary View of Citizen Directed Supports in the United States**
Caitlin Bailey, MS, National Leadership Consortium on Developmental Disabilities
Marian Frattarola-Saulino, MSW, Values Into Action
- 7. Provider Profiles in PA: Helping Individuals and Families Exercise Real Choice Based on Information**
Celia Feinstein, MA, FAAIDD, Temple University
James A. Lemanowicz, MBA, FAAIDD, Temple University
Dolores Frantz, MPH, Pennsylvania Department of Human Services
- 8. Benefits of Medical Home Consistent Care for Children with Developmental Disabilities: Findings from the NS-CSHCN**
Rebecca Wells, PhD, Georgia State University
Patricia Daniel, PhD, Georgia State University
Brian Barger, PhD, Georgia State University
Catherine Rice, PhD, Emory University
Daniel Crimmins, PhD, Georgia State University
- 9. Trauma-Informed Person-Centered Thinking**
Karyn Harvey, PhD, The Arc Baltimore
Michael Smull, Support Development Associates
- 10. Perspectives of AAC Experts: Promoting Communicative Competence Among Individuals Who Use AAC**
Melinda Snodgrass, PhD, Illinois State University
Yun-Ching Chung, PhD, Illinois State University
Virginia Walker, PhD, University of North Carolina at Charlotte
Sarah Douglas, PhD, Michigan State University
- 11. Direct Instruction to Promote the Use of Text-to-Speech Software for Students with Intellectual Disability in Postsecondary Settings**
Lauren Bruno, PhD, University of Iowa
Erica Kaldenberg, PhD, University of Iowa
- 12. Transition Assessment: Transition Planning for Students with Intellectual Disability**
Kendra Williams-Diehm, PhD, University of Oklahoma
Tracy Sinclair, MEd, University of Oklahoma
Susan Palmer, PhD, FAAIDD, University of Kansas
- 13. On the Autism Spectrum: Outreach to Underserved Communities**
Jennifer Hall-Lande, University of Minnesota
- 14. Using Diagnostic Research to Inform Teaching Strategies for Young Children with Intellectual Disability and Autism Spectrum Disorder**
Laura Murphy, EdD, University of Tennessee Health Science Center
- 15. Knowledge Translation Requires Putting Knowledge in the Hands of the User Through Productive Encounters**
Robert Schalock, PhD, FAAIDD, Hastings College (Emeritus)
Claudia Claes, PhD, University College-University of Gent
Miguel Angel Verdugo Alonso, PhD, FAAIDD, Universidad de Salamanca
- 16. Partnering with Families: Considerations Beyond Research Methodology**
Hedda Meadan, PhD, University of Illinois at Urbana-Champaign
Michelle M. Sands, MEd, University of Illinois at Urbana-Champaign
Janet Aleman-Tovar, MA, University of Illinois at Urbana-Champaign

B6—POSTER SYMPOSIUM

Health & Behavioral Health

Moderator: Elizabeth Perkins, PhD, FAAIDD, University of South Florida and AAIDD Board of Directors

1:45 pm – 3:15 pm | ROOM: KELLOGG 1

BOARD #1

Factors that Predict Preventative Care Utilization in Adults with Intellectual and/or Developmental Disabilities

Jason Xenakis, MD, MPH, New York Medical College
 Patricia Patrick, DrPH, New York Medical College
 Adam Block, PhD, New York Medical College
 Andrew Flatley, MS, New York Medical College
 Peace Orji, New York Medical College
 Annebeth Litt, MD, New York Medical College
 David M. O'Hara, PhD, New York Medical College

BOARD #2

Improving Health Care for Adults with IDD: Lessons Learned from Three Primary Care Practices in Ontario, Canada

Avra Selick, MA, Centre for Addiction and Mental Health
 Janet Durbin, PhD, Centre for Addiction and Mental Health
 Ian Casson, MD, Queen's University
 Yona Lunsky, PhD, FAAIDD, Centre for Addiction and Mental Health

BOARD #3

Utilizing Telemedicine to Reduce Avoidable Emergency Department Visits in Populations with Intellectual and Developmental Disabilities

Matthew Kaufman, MD, Station MD

BOARD #4

Comparing Medical Service Utilization and Child Health Problems by Diagnosis

Lauren Halladay, University of Oregon
 Ellie M. Harrington, University of Oregon
 Hannah Barton, MEd, University of Oregon
 Laura Lee McIntyre, PhD, FAAIDD, University of Oregon

BOARD #5

Let's Take a Walk! Fostering Social Inclusion One Step at a time

Emily Tucker, Oklahoma State University
 Jennifer L. Jones, PhD, FAAIDD, Oklahoma State University
 Kami L. Gallus, PhD, Oklahoma State University
 Cristine Johnson, PhD, Oklahoma University

BOARD #6

Wolfing it Down: Assessing the Current Evidence for Outcomes and Treatment of Rapid Eating

Janice Goldschmidt, MS, Community Support Services, Inc.

BOARD #7

Cardiovascular Disease Risk Factors and Multimorbidity in Special Olympics Athletes

Iulia Mihaila, PhD, University of Illinois at Chicago
 Lindsay DuBois, PhD, Special Olympics
 Molly Sadowsky, MPH, Special Olympics

BOARD #8

Stoplight Healthy Living Program—Translating Research into Practice

Kim Bruns, MEd, University of Kansas
 Dot Nary, PhD, University of Kansas
 Karrie A. Shogren, PhD, FAAIDD, University of Kansas

BOARD #9

Effectiveness of Special Olympics Fitness Programming as an Intervention to Improve Health

Eric Rubenstein, PhD, University of Wisconsin-Madison
 Lindsay DuBois, PhD, Special Olympics
 Molly Sadowsky, MPH, Special Olympics
 Monica Forquer, MS, Special Olympics
 Kyle Washburn, MEd, MBA, Special Olympics

BOARD #10

Inclusive Translation and Dissemination of Special Olympics International Health Data

Lieke van Heumen, PhD, University of Illinois at Chicago
 Lindsay DuBois, PhD, Special Olympics
 Susun Xiong, MS, University of Illinois at Chicago

BOARD #11

Individual and Contextual Determinants Associated with Use of Psychotropic Medication in Adults with Intellectual and Developmental Disabilities

James Houseworth, PhD, University of Minnesota
 Steve Erickson, PhD, University of Michigan
 Amy Esler, PhD, University of Minnesota

BOARD #12

Creating Restorative Practices to Mitigate the Impact of Adverse Childhood Experiences in Children with Intellectual and Developmental Disabilities in Rural Public-School Settings

Shana Crispin, MSW, University of Tennessee Health Science Center
 Chanda Dunn, MSW, University of Tennessee Health Science Center

BOARD #13

Implementing Positive Behavior Supports in Agencies Supporting People with Intellectual and Developmental Disabilities

Rachel Freeman, PhD, University of Minnesota
 Jessica Simacek, PhD, University of Minnesota
 Julie Kramme, MA, University of Minnesota

BOARD #14

Research, Policy and Practice to Improve MH/IDD Services and Supports

Karen Weigle, PhD, University of New Hampshire
 Joan B. Beasley, PhD, University of New Hampshire

3:15 – 3:30 pm

Refreshment Break in the Exhibit Hall

CONCURRENT C SESSIONS

3:30 – 5:00 pm

C1—PROMISING PSYCHOPHARMACOLOGICAL INTERVENTIONS

Moderator: Vincent Chesney, MS, FAAIDD, Commonwealth of Pennsylvania, Selinsgrove State Center and AAIDD Psychology Interest Network

Behavioral Outcomes of Promising Pharmacological Treatments for IDD Syndromes—Promises and Pitfalls

Steven Warren, PhD, FAAIDD, University of Kansas
Leonard Abbeduto, PhD, FAAIDD, University of California, Davis
Angela John Thurman, PhD, University of California, Davis
Breanne Byiers, PhD, University of Minnesota
Frank Symons, PhD, FAAIDD, University of Minnesota

ROOM: GOVERNORS 2

C2—FUTURE DIRECTIONS FOR THE SIS

Moderator: Yumi Shari, PhD, University of Arizona and AAIDD Creative Arts Therapies Interest Network

New Directions for the Supports Intensity Scales Supports Intensity Scales: New Horizons

James R. Thompson, PhD, FAAIDD, University of Kansas

Planning School-Based Supports with the SIS-C

Virginia Walker, PhD, University of North Carolina at Charlotte
Melinda Snodgrass, PhD, Illinois State University
Megan Carpenter, MA, University of North Carolina at Charlotte

SIS-A and SIS-C Respondents: A Closer Look

Mayumi Hagiwara, MS, University of Kansas
Karrie A. Shogren, PhD, FAAIDD, University of Kansas

The Unique Psychometric Properties and Administration Issues Evident in Translated Versions of the SIS-A and SIS-C

Marco Lombardi, MS, FAAIDD, University College of Ghent
Leslie Shaw, PhD, Cornell University

Using the Supports Intensity Scale to Identify Individuals with Extraordinary Need

Megan Villwock, MPH, MSW, Human Resources Research Institute

Supports Intensity Scales: New Horizons

James R. Thompson, PhD, FAAIDD, University of Kansas

Planning School-Based Supports with the SIS-C

Virginia Walker, PhD, University of North Carolina at Charlotte

Melinda Snodgrass, PhD, Illinois State University

Megan Carpenter, MA, University of North Carolina at Charlotte

SIS-A and SIS-C Respondents: A Closer Look

Mayumi Hagiwara, MS, University of Kansas
Karrie A. Shogren, PhD, FAAIDD, University of Kansas

The Unique Psychometric Properties and Administration Issues Evident in Translated Versions of the SIS-A and SIS-C

Marco Lombardi, MS, FAAIDD, University College of Ghent
Leslie Shaw, PhD, Cornell University

Using the Supports Intensity Scale to Identify Individuals with Extraordinary Need

Megan Villwock, MPH, MSW, Human Resources Research Institute

Colleen Kidney, PhD, Human Resources Research Institute

ROOM: GOVERNORS 3

C3—SUPPORTING RELATIONSHIPS AND SEXUALITY

Moderator: Carrie Coffield, PhD, Rutgers RWJMS and AAIDD Health & Wellness Interest Network

Creating a Program for Improving Romantic Relationship and Sexual Health Knowledge for Adults with Disabilities in Michigan

Rebecca Kammes, MA, Michigan State University
Rhonda Black, PhD, University of Hawai'i
Maria Peak, ASPPIRE of Mid-Michigan
Bob Steinkamp, ASPPIRE of Mid-Michigan
Blair Dammerman, ASPPIRE of Mid-Michigan
Katlyn Taylor, ASPPIRE of Mid-Michigan
Sarah Curtiss, PhD, Michigan State University

Let's Talk about Sex, Maybe: Sex Education for People with Intellectual Disability

Calisha Chatter-Fitzhugh, EdS, Texas Woman's University; Prosper ISD

continued next page

Relationships, Sexuality, and People with Intellectual Disability: Overview of Collaborative Project in Louisiana to Prevent Abuse & Exploitation

Sharon Delvisco, MSW, Team Dynamics, LLC
Rebecca Mandal-Blasio, PsyD, Autism Spectrum Therapies
ROOM: GOVERNORS 4

C4—PROMOTING BELONGING IN FAITH COMMUNITIES

Moderator: Sharon Gomez, FAAIDD, Evergreen Life Services and AAIDD Leadership and Management in Community Living Interest Network

The State of Spiritual Supports in IDD: A Report of Findings from the Faith Inclusion Network of Hampton Roads

David Morstad, MEd, FAAIDD, Consultant
Karen Jackson, Faith Inclusion Network of Hampton Roads

From Inclusion to Belonging: Lessons From Theory, Theology, Research and Practice in Faith Communities

William Gaventa, MDiv, FAAIDD, Consultant

Belonging: Translating Spiritual and Religious Preferences and Wishes into Practice

Shelly Christensen, MA, FAAIDD, Inclusion Innovations, LLC
Deborah Fisher, PsyD, FAAIDD, Deborah Fisher Consulting
ROOM: KELLOGG 3



Together we are supporting the knowledge and practices for inclusion.

Proud sponsor of the
2019 AAIDD Annual Conference



SAVE • THE • DATE

aaidd 144th AAIDD Annual Meeting | June 1 – 4 | Pittsburgh, Pennsylvania

C5—ISSUE BRIEFS: RESEARCH

Moderator: Ruth Luckasson, JD, FAAIDD, University of New Mexico

3:30 pm – 5:00 pm | ROOM: GOVERNORS 1

- 1. Projecting Change in Settings Types Beyond Current Trends to Measure Impact of the 2014 Medicaid Settings Rule**
Heidi Eschenbacher, PhD, University of Minnesota
Sheryl Larson, PhD, FAAIDD, University of Minnesota
- 2. Relevance of the Assessment of Parents' Socio-Cultural Level in Toddlers with Autism Spectrum Disorder: Influences on Adaptive Behavior**
Alice Bacherini, MA, IRCCS Stella Maris Foundation
Gessica Rebecchini, MA, IRCCS Stella Maris Foundation
Romina Cagiano, MA, IRCCS Stella Maris Foundation
Alice Mancini, MD, IRCCS Stella Maris Foundation
Raffaella Tancredi, MD, IRCCS Stella Maris Foundation
Roberta Iglizzi, MA, IRCCS Stella Maris Foundation
Filippo Muratori, MD, IRCCS Stella Maris Foundation;
University of Pisa
Giulia Balboni, PhD, FAAIDD, University Of Perugia
- 3. Evaluating an Informed Consent Process Designed to Improve Inclusion of Adults with Intellectual Disability in Research**
Jesse Strickler, The Ohio State University
Susan M. Havercamp, PhD, FAAIDD, The Ohio State University
Lara Sucheston-Campbell, PhD, The Ohio State University
Garey Noritz, MD, Nationwide Children's Hospital
- 4. Violence Against Women with Intellectual Disability in Canada: A Systematic Review**
Sarah O'Flanagan, Western University
Gabriel Boldt, MLIS, London Health Sciences Centre
Rob Nicolson, MD, Western University
- 5. Functional Brain Connectivity (fMRI) in Young People With Down Syndrome: Relationship Between Complexity Network and Physical Activity Level**
Maria Carbó-Carreté, PhD, Universitat Ramon Llull
Cristina Caete-Mass, MS, University of Barcelona
Guillermo Ruben Oviedo, PhD, Universitat Ramon Llull
Myriam Guerra-Blic, MD, Universitat Ramon Llull
Maribel Per-Cebollero, PhD, Universitat de Barcelona
Marc Montal-Flaquer, MS, Universitat de Barcelona
Joan Gurdia-Olmos, PhD, Universitat de Barcelona
- 6. Supporting Competitive Employment: An Investigation of Person and Service Factors**
Evan Dean, PhD, University of Kansas Medical Center
Mark Anderson, MA, University of Kansas
Erin Bojanek, University of Kansas
Karrie Shogren, PhD, FAAIDD, University of Kansas
- 7. Direct Support Professionals in Disability Research: Bridging the Research-To-Practice Gap 30 Years Into the Turnover Crisis**
Jill Crane, MA, The Ohio State University
Susan M. Havercamp, PhD, FAAIDD, The Ohio State University
- 8. They Care for Others, But What About Themselves? Understanding Selfcare Among DSPS and its Relationship to Professional Quality of Life**
John Keesler, PhD, Indiana University
- 9. Opening Doors to Health Care with People with Disabilities: Implementing Tools for Direct Support Professionals**
Heather Hermans, VITA Community Living Services
Avra Selick, MA, CAMH Centre for Addiction and Mental Health
Chanelle Salonia, MA, Vita Community Living Services
Erin Orr, MA, PSD Research Consulting Software
Yona Lunskey, PhD, FAAIDD, Centre for Addiction and Mental Health
Janet Durbin, PhD, CAMH Centre for Addiction and Mental Health
Lauren Zaretsky, VITA Community Living Services
- 10. Exploring Parent and Systemic Advocacy Among Parents of Children with Intellectual and Developmental Disabilities**
Zach Rossetti, PhD, Boston University
Meghan M. Burke, PhD, University of Illinois at Urbana-Champaign
Kristen Schraml, University of Illinois at Urbana-Champaign
Kristina Rios, University of Illinois at Urbana-Champaign
Janeth Aleman-Tovar, University of Illinois at Urbana-Champaign
Javier Rivera, Boston University
- 11. Attitudes of Parents, Regarding Couple Relationships of Their Offspring with Intellectual Disability: Implications for the Provision of Support**
Ran Neuman, PhD, Zefat Academic College Israel
- 12. Support Needs of Canadian Adult Siblings of Brothers and Sisters with Developmental Disabilities**
Brianne Redquest, Wilfrid Laurier University Centre for Addiction on Mental Health
Ami Tint, PhD, Centre for Addiction and Mental Health
Helen Ries, MBA, The Sibling Collaborative
Eric Goll, MBA, The Sibling Collaborative
Becky Rossi, MBA, The Sibling Collaborative
Yona Lunskey, PhD, FAAIDD, Centre for Addiction on Mental Health
- 13. Research, Policy and Practices Supporting Parents with Intellectual and Developmental Disabilities**
Nicole Brisson, PhD, FAAIDD, Sage Haven Associates
Susan Yuan, PhD, Sage Haven Associates
Kara Ayers, PhD, University of Cincinnati
- 14. Tracking Impact on Health Outcomes: Results from a Novel Community-Academic Partnership Between Special Olympics and the Partnership for People with Disabilities, VCU**
Lindsay DuBois, PhD, Special Olympics
Molly Sadowsky, MPH, Special Olympics
Parthenia Dinora, PhD, Virginia Commonwealth University
Kayla Diggs-Brody, MPH, Virginia Commonwealth University
- 15. International Attitudes towards People with Intellectual Disabilities**
Lindsay DuBois, PhD, Special Olympics
Roy McConkey, PhD, Ulster University
Paul Slater, PhD, Ulster University
Gary Siperstein, PhD, University of Massachusetts Boston
Holly Jacobs, MA, University of Massachusetts Boston
Ashlyn Smith, PhD, Special Olympics

C6—POSTER SYMPOSIUM

K-12 Education

Moderator: Anthony Rodriguez, PhD, Providence College and AAIDD Board of Directors

3:30 pm – 5:00 pm | ROOM: KELLOGG 1

BOARD #1

An Examination of Demographics in Randomized Controlled Trials of Group Social Skills Interventions for Individuals with Autism Spectrum Disorder

*Jonathan Safer-Lichtenstein, University of Oregon
Jillian Hamilton, University of Oregon
Laura Lee McIntyre, PhD, FAAIDD, University of Oregon*

BOARD #2

Kindergarten Transition for Children with Disabilities: A Review of Stakeholder Practices and Experiences

Michelle Sands, MA, MEd, University of Illinois at Urbana-Champaign

BOARD #3

Teaching Students with Intellectual Disabilities to Sequence Academic Content Using an iPad Application

*Allison Kroesch, EdD, Illinois State University
Yun-Ching Chung, PhD, Illinois State University
Karen H. Douglas, PhD, Radford University*

BOARD #4

Early Social and Emotional Functioning in Toddlers with Autism Spectrum Disorder and Intellectual Disability

*Laura Murphy, EdD, University of Tennessee Health Science Center
Philip Norfolk, PhD, University of Tennessee Health Science Center*

BOARD #5

Early Intervention Services Trajectory in GDD: Portrait of Quebec Situation

*Justine Grenier-Martin, PhD, Université du Québec à Montréal
Méline Rivard, PhD, Université du Québec à Montréal*

BOARD #6

Inclusion: The Communicative Interactions of High School Students with Intellectual and Developmental Disabilities

*Yun-Ching Chung, PhD, Illinois State University
Karen H. Douglas, PhD, Radford University
Virginia Walker, PhD, University of North Carolina at Charlotte*

BOARD #7

Parent Input in IEP Development

*Jennifer Kurth, PhD, University of Kansas
Andrea Ruppert, PhD, University of Wisconsin-Madison
Samantha Gross Toews, MEd, University of Kansas
Jessica McQueston, MSE, University of Wisconsin-Madison
Katie McCabe, MSE, University of Wisconsin-Madison*

BOARD #8

Ecobehavioral Analysis of Inclusive Classrooms

*Samantha Gross Toews, MEd, University of Kansas
Elissa Lockman Turner, MA, University of Kansas
Jennifer Kurth, PhD, University of Kansas*

BOARD #9

General Education Curriculum or Functional Skills Curriculum: Which is Most Prevalent in Individualized Education Program (IEP) Goals for Students with Significant Cognitive Disabilities?

*Olivia Coleman, MEd, University of Utah
John McDonnell, PhD, University of Utah
J. Matt Jameson, PhD, University of Utah
Joanna Ryan, MEd, University of Utah
Jessica Bowman, MEd, University of Utah
Lyndsey Conradi, MEd, University of Utah
Carrie Eichelberger, MS, University of Utah*

BOARD #10

Supporting Students with IDD in the Inclusive Mathematics Classroom: Challenging Prevailing Practice

*Jessica Bowman, MEd, University of Utah
John McDonnell, PhD, University of Utah*

BOARD #11

Examining Whole-Class Implementation of the Self-Determined Learning Model of Instruction in Inclusive Secondary, General Education Mathematics Classes

*Sheida K. Raley, MEd, University of Kansas
Karrie A. Shogren, PhD, FAAIDD, University of Kansas*



5:00 – 7:00 pm

Poster Session and Reception

Refreshments and cash bar.

Enjoy appetizers as you chat with poster presenters about their emerging findings in research, practice, and public policy.

For a list of posters, authors, and board assignments, please go to pages 43–51.

ROOM: MINNESOTA BALLROOM

7:00 – 8:30 pm

AAIDD Publications Reception

Open to all conference attendees at no additional cost.

Meet your favorite editors and authors in a cocktail party atmosphere.

Co-sponsored
by University
of California,
Davis

ROOM: GOVERNORS 4

7:00 – 8:30 pm

Student and Early Career Professionals Networking Reception

Collegial networking event for students and early career professionals

Co-sponsored
by OSU
Nisonger
Center

ROOM: STATE 2

7:05 pm

Night at the Ballpark II: St. Paul Saints vs. Texas AirHogs

All attendees are invited to join us for a Night at the Ballpark.

CHS Field is within walking distance from the hotel (about a 14-minute walk).

Address:
CHS Field
360 Broadway St., St. Paul



**Open to all conference attendees
Tickets \$18**

Purchase your ticket at the registration desk!

Please stop by the

AAIDD Bookstore

located in the Exhibit Hall to examine our new AAIDD books and journals!



Show your pride in AAIDD!

Visit the bookstore and check out our logo products—caps and t-shirts. On the back of each shirt is the inspirational quote: “Be the change you want to see in the world.”

Wednesday, June 26

Registration Hours

7:00 am – 3:00 pm

Exhibits Open

from 7:30 am – 11:00 am

For a list of Exhibitors,
see pages 53–56.

7:00 – 8:00 am

Direct Support Professionals Interest Network

Presiding: Colleen McLaughlin, MEd, FAAIDD,
RWJMS Rutgers

ROOM: STATE 2

7:30 – 8:30 am

International Interest Network

Presiding: Chun-yu (Caya) Chiu, PhD, FAAIDD,
National Taiwan Normal University

ROOM: STATE 3

7:00 – 8:00 am

Social and Sexual Concerns Interest Network

Presiding: Rhonda Black, PhD, University of Hawai'i

ROOM: GOVERNORS BOARDROOM

8:00 – 8:45 am

Awards Breakfast

Open to all conference attendees

AAIDD is pleased to recognize its members and others for their service.

Join us in honoring their accomplishments at this year's Awards Breakfast.

Presiding:

David Morstad, MEd, FAAIDD
Awards and Fellowship Committee Chair

ROOM:
GREAT RIVER BALLROOM

CONGRATULATIONS TO THE 2019 AWARD RECIPIENTS

Dybwad Humanitarian.....	David Coulter, MD, FAAIDD
Early Career	Meghan M. Burke, PhD
Education	Carol Britton Laws, PhD, FAAIDD
Hervey B. Wilbur Historic Preservation.....	Western Pennsylvania Disability History and Action Consortium
International.....	Chun-yu Chiu, PhD, FAAIDD
Leadership	MaryAnn Ronski, PhD, FAAIDD
Research	Susan L. Parish, PhD, FAAIDD
Service to the Association.....	Vincent Chesney, MS, FAAIDD
Service to the Field.....	Neomi van Duijvenbode, PhD
Special	Département de Psychologie at Université du Québec à Montréal (UQAM)
Student	Ariel Schwartz, MS
Presidential	Glenn Fujiura, PhD



8:45 – 9:15 am

Exclusive Exhibit Time

Explore the exhibit hall without missing any education sessions! Join us for some exclusive exhibit time and enjoy a cup of coffee as you interact with our exhibitors and sponsors.

PLENARY SESSION

9:15 – 10:45 am

Implementation Science of Mindfulness in IDD and ASD

Nirbhay N. Singh, PhD

Clinical Professor of Psychiatry and Health Behavior, Augusta University

ROOM: GREAT RIVER BALLROOM



10:45 – 11:00 am

Break

Exhibits and Silent Auction Close at 11:00 am

Last Chance to Visit our Exhibitors!

CONCURRENT D SESSIONS

11:00 am–12:00 pm

D1—BECOMING A CLINICAL LEGAL EXPERT

Moderator: David Rotholz, PhD, FAAIDD, University of South Carolina School of Medicine

Clinical Legal Experts: What Do You Need to Know?

James W. Ellis, JD, University of New Mexico School of Law
Ann M. Delpha, JD, University of New Mexico School of Law

ROOM: KELLOGG 3

D2—PROMOTING INTEGRATED EMPLOYMENT

Moderator: William Gaventa, MDiv, FAAIDD, Consultant

Promoting Integrated Employment Outcomes for People with Intellectual and Developmental Disabilities

Karrie A. Shogren, PhD, FAAIDD, University of Kansas
Kathryn Burke, MEd, University of Kansas
Mark Anderson, MS, University of Kansas
Tyler Hicks, PhD, University of Kansas
Anthony Antosh, EdD, Rhode Island College

ROOM: GOVERNORS 2

D3—PREVENTING A DSP CRISIS

Moderator: Colleen McLaughlin, MEd, Rutgers RWJMS and AAIDD Direct Support Professionals Interest Network

The Direct Support Workforce: No Greater Risk to Quality and Community

Amy Hewitt, PhD, FAAIDD, University of Minnesota
Jerry Smith, MBA, University of Minnesota
Barbara Kleist, JD, FAAIDD, University of Minnesota
Julie Kramme, MA, University of Minnesota

ROOM: GOVERNORS 3

Don't forget to pick up Silent Auction items by 1:00 pm!

D4—IMPROVING EDUCATIONAL TRANSITIONS

Moderator: Heather Williamson, DrPH, Northern Arizona University and AAIDD Student and Early Career Professionals Interest Network

Lessons Learned: One Year After Establishment of the Comprehensive Transition Project (CTP)

Sabrina Harris, PhD, Coppin State University
Regina Brown, MEd, Coppin State University
James Stewart, PhD, Coppin State University
Janet Spry, EdD Coppin State University

Data-Driven Technical Assistance to Improve Transition Outcomes for Youth with Intellectual and Developmental Disabilities

Michele Schutz, MEd, Vanderbilt University Medical Center

ROOM: GOVERNORS 4

D5—MEASURING THE IMPACT OF MEDICAID AND OTHER PUBLICLY FUNDED SUPPORTS

Moderator: James A. Lemanowicz, MBA, FAAIDD, Temple University and AAIDD Research Interest Network

Medicaid, SNAP, and Special Education's Role in Ameliorating Economic, Health, and Social Impact of Having a Child with IDD: A National Perspective Individual Paper Presentation

Derek Nord, PhD, FAAIDD, Indiana University
Kristin Hamre, PhD, Indiana University
John Andresen, MEd, Indiana University

State Utilization of Direct Support Professionals in Medicaid HCBS Waivers

Carli Friedman, PhD, CQL—The Council on Quality and Leadership

ROOM: GOVERNORS 1



D6—POSTER SYMPOSIUM

Teacher Preparation

Moderator: *Cathy Ficker Terrill, MS, FAAIDD, Consultant*

11:00 am – 12:00 pm | ROOM: KELLOGG 1

BOARD #1

Teaching Evidence-Based Practices to Teachers

Jennifer Peña, PhD, Mission Achievement and Success Charter School
Susan Copeland, PhD, FAAIDD, University of New Mexico

BOARD #2

Efficient, Effective, and High Leverage Student Teaching: Bringing to Scale Teacher Development for Autonomy, Mastery, and Purpose in a Time of Compliance and Directive

Anthony Rodriguez, PhD, Providence College
Lauren Barrett, Providence College
Lauren Coccoluto, Providence College
Erin D'Aquila, Providence College
Felicia Lopez, Providence College
Cassie Pelli, Providence College

BOARD #3

Training Preservice Teachers as Advocates Within the Volunteer Advocacy Project

Joseph Cosgriff, PhD, Lincoln Memorial University

BOARD #4

Harnessing our Collective Talents: The Importance of Peer Mentoring Across Cohorts in Teacher Education

Anthony Rodriguez, PhD, Providence College
Julia Barry, Providence College
Julia Miller, Providence College
Ysabelle Errico, Providence College
Maura Crowley, Providence College
Caitlin Rodensky, Providence College
Adriana Russell, Providence College

BOARD #5

The Juxtaposition of Culture Change, Organizational Change, and Implementation Science and Sustainable Inclusive Education: The Full Meaning of Context in Inclusive Education

Deborah Taub, PhD, OTL Education Solutions, LLC
Diane Ryndak, PhD, University of North Carolina, Greensboro

BOARD #6

An Analysis of LRE Placement Decisions

Jennifer Kurth, PhD, University of Kansas
Andrea Ruppap, PhD, University of Wisconsin-Madison
Samantha Gross Toews, MEd, University of Kansas
Katie McCabe, MSE, University of Wisconsin-Madison
Jessica McQueston, MSE, University of Wisconsin-Madison

BOARD #7

Effect of Telepractice on Training Autism Teachers to Contrive Motivating Operations

Carin Shearer, University of North Texas
Smita Shukla Mehta, PhD, University of North Texas

BOARD #8

A Needs Assessment of Connecticut Certified Health Teachers Regarding Students Receiving Special Education Services

Tara Lutz, PhD, MPH, University of Connecticut
Mary Beth Bruder, PhD, University of Connecticut

BOARD #9

Story Matters: The Literacy Narratives of Teachers of Students with Complex Support Needs

Sharon Head, MA, University of New Mexico

BOARD #10

The Perceptions and Goals of Special Education Advocacy Trainees

Samantha Goldman, PhD, Assumption College
Meghan M. Burke, PhD, University of Illinois at Urbana-Champaign
Maria P. Mello, PhD, St. John's University

BOARD #11

Building Bridges Between Students With and Without Intellectual Disability: The Impact of Language and Sport on Promoting School and Community Inclusion

Holly Jacobs, MA, University of Massachusetts Boston
Emily Van Gaasbeek, EdM, University of Massachusetts Boston
Christian Villenas, PhD, National School Climate Center
Roy McConkey, PhD, Ulster University

BOARD #12

The Impact of a Delay to Early Intensive Behavioral Intervention on Educational Outcomes for a Cohort of Medicaid-Enrolled Children with Autism

Adele Dimian, PhD, University of Minnesota
Frank Symons, PhD, FAAIDD, University of Minnesota

12:00 – 1:00 pm

Lunch on Your Own

12:00 – 1:00 pm

INTEREST NETWORK LUNCH MEETINGS

The following leadership groups will be meeting over lunch.

A lunch ticket is required for admission, limited number of tickets available at the registration desk.

Students and Early Career Professionals Luncheon

Lunch ticket \$15

Come and meet other Students and Early Career Professionals, a great network opportunity!

ROOM: GREAT RIVER 1

Psychology Interest Network Lunch Meeting

Lunch ticket \$20

Open to all members of the Psychology Interest Network, lunch ticket required.

ROOM: STATE 3

12:00 – 1:00 pm

Past Presidents' Luncheon

(By invitation only)

Congratulations to our Newest Fellows

Nicole A. Brisson, PhD
Sage Haven Associates, Inc.
Fairfax, VT

Marklyn P. Champagne, MSW
Creative Therapies
East Greenwich, RI

Chun-yu Chiu, PhD
National Taiwan Normal University
Taipei, Taiwan

Deborah M. Fisher, PsyD
Deborah Fisher Consulting
Chevy Chase, MD

David R. Johnson, PhD
University of Minnesota
Minneapolis, MN

Barbara A. Kleist, JD
University of Minnesota
Minneapolis, MN

Marco Lombardi, MS
University College Ghent
Ghent, Belgium

Derek Nord, PhD
Indiana University
Bloomington, IN

Ollie J. Seay, PhD
Texas State University
Austin, TX

WEDNESDAY at 4:00 pm

Screening of the film

The Eugenics Crusade

PBS American Experience Series

Join us for a screening of *The Eugenics Crusade* (PBS American Experience Series), a documentary that tells the story of the movement that turned the fledgling scientific theory of heredity into a powerful instrument of social control.

ROOM: GOVERNORS 4



CONCURRENT E SESSIONS

1:00 – 2:00 pm

E1—SUPPORTING FAMILIES OF YOUNG CHILDREN

Moderator: Leonard Abbeduto, PhD, FAAIDD, University of California, Davis and AAIDD Board of Directors

Examining Feasibility, Engagement, and Therapeutic Factors in Interventions for Parents of Young Children with Developmental Delays

- Neilson Chan, MA, Loma Linda University
- Hannah Barton, MEd, University of Oregon
- Grant Boostrom, Loma Linda University
- Megan Krantz, Loma Linda University
- Annacecilia McWhirter, MEd, University of Oregon
- Hadley McGregor, Loma Linda University
- Monica Vejar, University of California, Los Angeles

ROOM: GOVERNORS 1

E2—IMPLEMENTING SCHOOL-WIDE MODELS TO SUPPORT INCLUSIVE EDUCATION

Moderator: Melissa DiSipio, MSA, FAAIDD, Philadelphia Coordinated Health Care and AAIDD Board of Directors

Unit Co-Planning to Support Inclusive Education

- Samantha Gross Toews, MEd, University of Kansas
- Jennifer Kurth, PhD, University of Kansas
- Elissa Lockman Turner, MA, University of Kansas

The Self-Determined Learning Model of Instruction in Inclusive, Secondary Classrooms: Examining the Impact of Implementation Supports on Teacher and Student Outcomes

- Sheida K. Raley MEd, University of Kansas
- Karrie Shogren, PhD, FAAIDD, University of Kansas
- Mayumi Hagiwara, MS, University of Kansas

ROOM: GOVERNORS 4

E3—USING PNS DATA TO INFORM POLICY MAKING

Moderator: Mark McManus, PhD, University of Akron and AAIDD Social Work Interest Network

Data Projects of National Significance: Informing Policy and Practice Through Research

- Amie Lulinski, PhD, FAAIDD, University of Colorado
- Sheryl Larson, PhD, FAAIDD, University of Minnesota
- Heidi Eschenbacher, PhD, University of Minnesota
- Jean Winsor, PhD, University of Massachusetts Boston

ROOM: GOVERNORS 2

E4—IMPLEMENTING POSITIVE BEHAVIORAL SUPPORTS IN HUMAN SERVICES

Moderator: Justin Kuehl, PsyD, FAAIDD, Milwaukee County Behavioral Health Division

Using Implementation Science to Expand the Use of Positive Behavior Support in Education and Human Service Settings

- Rachel Freeman, PhD, University of Minnesota
- Garrett Petrie, MS, Minnesota Department of Special Education
- Tim Moore, PhD, University of Minnesota

ROOM: KELLOGG 3

E5—INCREASING SELF DETERMINATION IN HEALTH CARE

Moderator: Lieke van Heumen, PhD, University of Illinois at Chicago and AAIDD Gerontology Interest Network

Values in Long-Term Supports: Identifying Person-Centered Values in Supports of Persons with Epilepsy

- Wil Buntinx PhD, FAAIDD, Maastricht University; Buntinx Training & Consultancy
- Francis I.Y. Tan, MD, Epilepsy Center Kempenhaeghe
- Albert P. Aldenkamp, PhD, Epilepsy Center Kempenhaeghe; Maastricht University Medical Center

Social Determinants of Health: Ensuring Value Metrics are Valuable to People with IDD

- Carli Friedman, PhD, CQL—The Council on Quality and Leadership

Changing Healthcare Practices for Youth with Disabilities Receiving Intensive Case Management and Benefits Counseling

- Leslie Shaw, PhD, Cornell University
- Hassan Enayati, PhD, Cornell University

ROOM: GOVERNORS 3



E6—POSTER SYMPOSIUM

Self Determination

Moderator: David R. Johnson, PhD, FAAIDD, University of Minnesota

1:00 pm – 2:00 pm | ROOM: KELLOGG 1

BOARD #1

Conceptualizing Choice: How Researcher Training Impacts the Perception of Choice When Surveying Adults with Intellectual and Developmental Disabilities

Sarah Lankford, Oklahoma State University
 Maggie M. Jones, Oklahoma State University
 Jennifer Jones, PhD, FAAIDD, Oklahoma State University
 Kacey L. Ward, MS, Oklahoma State University
 Kami Gallus, PhD, Oklahoma State University

BOARD #2

Young Adults with Disabilities Financial Skills and Goals: A Mixed Methods Strengths and Needs Assessment

Allison D'Aguiar, MEd, Virginia Commonwealth University

BOARD #3

Collaborative Knowledge Translation as a Strategy for Community Organizing and Disability Justice: Lessons Learned and Ways Forward

Nechama Sammet Moring, MA, Rebel Girl Research Communications

BOARD #4

Examining the Impact of Contextual Factors on Self-Determination of Young Adults and Adults with Disabilities

Mayumi Hagiwara, MS, University of Kansas
 Karrie Shogren, PhD, FAAIDD, University of Kansas
 Graham Rifenbark, PhD, University of Kansas

BOARD #5

Self-Advocacy Online: Making Online Information Accessible for All

John Smith, MSW, University of Minnesota

BOARD #6

Evidence Based Practices that Support Person Directed Services and Supports

Caitlin Bailey, MS, National Leadership Consortium on Developmental Disabilities
 Nancy Weiss, MS, FAAIDD, National Leadership Consortium on Developmental Disabilities
 Corina Gilden, MS, National Leadership Consortium on Developmental Disabilities
 Steven Eidelman, MSW, MBA, FAAIDD, National Leadership Consortium on Developmental Disabilities



BOARD #7

Accessible Data: Understanding Visualization Literacy and Graphical Perception of People with IDD

Emily Shea Tanis, PhD, FAAIDD, University of Colorado
 Danielle Albers Szafir, PhD, University of Colorado
 Keke Wu, MA, University of Colorado

BOARD #8

Gender Differences in Sexual Knowledge and Sexual Attitudes among Adults with Intellectual and Developmental Disabilities

Claire Baniak, MA, Spalding University
 Autumn Truss, MA, Spalding University

BOARD #9

Inclusive Retirement and Active Aging for Adults with Intellectual and Developmental Disabilities

Kelly Nye-Lengerman, PhD, University of Minnesota
 Roger Stancliffe, PhD, FAAIDD, University of Sydney
 Julie Kramme, MA, University of Minnesota

BOARD #10

Supporting Young Adults with ASD in our Community: Preliminary Results from a Community Needs Assessment Examining Current and Needed Supports and Quality of Life

Rebekah Hudock, PhD, University of Minnesota
 Amy Esler, PhD, University of Minnesota
 Jennifer Hall-Lande, PhD, University of Minnesota
 Chimei Lee, PhD, University of Minnesota
 Carley Matsumoto, MPP, Minnesota Independence College & Community

2:00 – 2:15 pm

Break

CLOSING PLENARY

2:15 – 3:45 pm



**Knowledge Translation:
Lessons Learned from Scaling Up PBIS**

Robert Horner, PhD, FAAIDD
Professor (Emeritus) University of Oregon

ROOM: GREAT RIVER BALLROOM

IN APPRECIATION

AAIDD Corporate Members

- Alexander Milne Developmental Services
- Anthem
- Ascend Management Innovations
- CDS Monarch
- Chimes International Limited
- Community Access Unlimited
- Developmental Pathways, Inc.
- Evergreen Life Services
- Human Services Research Institute
- Indiana Professional Management Group, Inc.
- REACH Program at College of Charleston
- StarCare Specialty Health System
- Station MD
- The Arc of the United States
- The Resource Exchange
- University of Minnesota

WOLF WOLFENSBERGER VALOR AWARD



*The AAIDD Psychology Interest Network
is pleased to present the*

**2019 Wolf Wolfensberger Valor Award
to Carol Salas Pagán, PsyD**

Born and raised in Puerto Rico, Dr. Carol Salas Pagán earned a doctoral degree in clinical psychology from the Carlos Albizu University, and a professional certificate in developmental disabilities and early intervention from the School of Public Health of the Puerto Rico Medical Sciences Campus. In addition, she has earned certificates from the Disparity Leadership Academy at Georgetown University and the National Consortium for Leadership in Developmental Disabilities at the University of Delaware.

Dr. Salas Pagán is a Professor and Academic Coordinator for the Graduate Certificate in Developmental Disabilities and Early Intervention at the Graduate School of Public Health of the Medical Sciences Campus of the University of Puerto Rico. Dr. Salas Pagán is the Director of Puerto Rico’s UCEDD, a post she has held since 2015. Immediately prior to her directorship, she was the Associate Director for over three years.

At the local level Dr. Salas Pagán is an active member of various advisory boards of Puerto Rico, including the Oficina del Procurador de las Personas con Impedimento (PR P&A), Consejo Estatal sobre Deficiencias en el Desarrollo (PR DD Council), Coalition Against Domestic Violence and Sexual Assault, San Juan Head Start, and the Universal Neonatal Hearing Screening Program.

Immediately after the devastation caused by Hurricane Maria, Dr. Salas Pagán and a group of leaders on the island created the Puerto Rico Disabilities Community Relief Network. The group has dedicated itself to the formidable task of advocating for the rights of the PR population with IDD and for inclusion of all vulnerable populations in disaster management.

COMPLIMENTARY POST-CONFERENCE SESSIONS

4:00 – 6:00 pm

By the Book: Writing a Book for Professional Publication

(approved for 2 psychology and 2 social work CEs)

Kathleen McLane, American Association on Intellectual and Developmental Disabilities

Janice Goldschmidt, MS, Community Support Services, Inc.

Jolynn Gower, Paul H. Brookes Publishing Company

Publishing to share your knowledge about effective practices is essential to building the body of knowledge in the field. This panel presentation will introduce attendees to the professional book publication process and offer guidance for those who would like to publish an academic text. Disability professionals interested in pursuing publication of their work will learn how to structure an appropriate book topic, assess feasibility, and determine appropriate publishing venues. Specific attention will be given to the process of writing effective book proposals. Along with commentary from publishing professionals and authors, an extended Q&A session will offer attendees the opportunity to pose specific questions regarding their own projects. The goal of the panel discussion will be to provide participants a realistic appreciation of academic book publishing and the steps necessary to ensure a successful outcome.

ROOM: GOVERNORS 1

4:00 – 6:00 pm

Writing for Publication

(approved for 2 psychology and 2 social work CEs)

Frank Symons, PhD, FAAIDD, University of Minnesota

James R. Thompson, PhD, FAAIDD, University of Kansas

Karrie A. Shogren, PhD, FAAIDD, University of Kansas

Michael Wehmeyer, PhD, FAAIDD, University of Kansas

The session addresses what professionals in the field need to know about how to be published in a scholarly journal: the elements of a research report needed for journal publication; the types of research and other articles published by the three AAIDD journals; how to determine which journal is the best fit for your work; and the policies and processes involved in publication in scholarly journals in both print and electronic formats.

ROOM: GOVERNORS 2

4:00 – 6:00 pm

Is This All We Got? Using a Lifecourse Lens to Rethink Service Systems Supporting People With Intellectual Disability

John Agosta, PhD, Human Services Research Institute

Jami Petner-Arrey, PhD, Human Services Research Institute

Charting the Lifecourse is emerging as a lens to consider how best to support people with intellectual and developmental disabilities (IDD) in the United States. This conceptual model offers opportunities to rethink how services are delivered and to restructure IDD support systems. This is timely given that many states are embarking on major system changes to expand services to all or most who need them, ensure a broad range of support is available, and ensure that the system can be made more efficient and sustainable. In addition, advocates are calling for changes to make services more responsive to people with disabilities throughout the LifeCourse, including a new generation of service recipients who demand supports that maximally emphasize self-direction and inclusion. Clearly, continuing business as usual is not an option. Yet change imposes choice—in this case to double down on past ways of doing things or seize the opportunity to move forward. This presentation offers information, experiences, and lessons learned from work to restructure IDD support systems to help policy makers manage systems more effectively through the LifeCourse lens. Presenters will share examples of efforts taking place in North America, offer recommendations, and facilitate discussion about how to blend current tensions with our best intentions.

ROOM: GOVERNORS 3

4:00 – 6:00 pm

Screening of the Film:

The Eugenics Crusade

American Experience Series

Join us for a screening of *The Eugenics Crusade* (PBS American Experience Series), a documentary that tells the story of the movement that turned the fledgling scientific theory of heredity into a powerful instrument of social control.

ROOM: GOVERNORS 4

Wednesday at 6:00 pm

Offsite event

Religion & Spirituality Interest Network Dinner

Come join us for a fun networking time.

Dinner will be at the

Gray Duck Tavern

345 Wabasha St. N, St. Paul

Cost: \$40



EVERGREEN CENTER

WWW.EVERGREENCTR.ORG

Caring through Competence

TWO PROGRAMS, ONE STANDARD OF EXCELLENCE

THE CENTER FOR BEHAVIOR DEVELOPMENT

Autism • Severe Maladaptive Behavior • Ages 6-21
Dual Diagnosis of Mental illness/Intellectual Disability/Traumatic Brain injury
Posttraumatic Stress Disorder • Physical Disability

THE CENTER FOR BASIC SKILLS

Autism • Intellectual Disability • Physical Disability
Sensory Impairments • Medical Needs • Ages 6-21

For over 30 years, Evergreen Center has provided living and learning environments for persons with autism and intellectual and developmental disabilities including physical disabilities, behavior disorders and complex health needs. Evergreen Center offers a highly competitive salary commensurate with local and national standards, an excellent benefit package, a retirement plan with company contribution, and tuition support/educational loan repayment programs.

Our Partners in Education
Masters Degree or Post Masters BCBA Course SEQUENCE



Masters Degree in Education
Cambridge College.edu



For More Information: Contact The Director Of Family Services & Admissions
Evergreen Center Inc., 345 Fortune Boulevard, Milford, MA 01757
Phone: (508) 478-2631 • Email: Services@evergreenctr.org
www.evergreenctr.org • Equal Opportunity Employer



Congratulations to our 2019 SECP Scholarship Winners

Student & Early Career Interest Network Scholarships

- **Wei Song, PhD**, University of Minnesota
Racial/Ethnic Disparities in Postschool Outcomes of Young Adults with IDD
- **Carli Friedman, PhD**, The Council on Quality and Leadership
State Utilization of Direct Support Professionals in Medicaid HCBS Waivers

Direct Support Professionals Interest Network

- **John Keesler, PhD**, Indiana University
They Care for Others, but What About Themselves? Understanding Selfcare Among DSPs, and Its Relationship to Professional Quality of Life

Education Interest Network

- **Alison Zagona**, University of New Mexico
Facilitating Engagement in Inclusive Classrooms for Students with Extensive Support Needs

Health and Wellness Interest Network

- **Heather Hermans**, Vita CLS
Opening Doors to Health Care with People with Disabilities: Implementing Tools for Direct Support Professionals

Psychology Interest Network

- **Jill Crane, MA**, The Ohio State University
Direct Support Professionals in Disability Research: Bridging the Research to Practice Gap 30 Years Into the Turnover Crisis
- **Stacey Brandjord, MA**, University of Minnesota
Needs assessment for individuals with autism who are minimally verbal

Research Interest Network

- **Jonathan Safer-Lichtenstein**, University of Oregon
An Examination of Demographics in Randomized Controlled Trials of Group Social Skills Interventions for Individuals with Autism Spectrum Disorder
- **Marisa Fisher, PhD**, Michigan State University
More Than Getting By: Understanding How Friendship Impacts Social Inclusion and Prevention of Victimization for Individuals with Intellectual and Developmental Disabilities (IDD)

Region V—Student Scholarships

- **Sheida Raley, MEd**, University of Kansas
The Self-Determined Learning Model of Instruction in Inclusive, Secondary Classrooms: Examining the Impact of Implementation Supports on Teacher and Student Outcomes
- **Calisha Chatter-Fitzhugh, EdS**, Texas Woman's University
Let's Talk about Sex, Maybe: Sex Education for People with Intellectual Disability

Region V—DSP Scholarship

- **Neisha Jackson**, Virage Community Services
- **Kenneth Taylor**, Dept. of Mental Health-SLDDTC
- **Stephen Whitener**, Bios Corporation

Region V—Membership

- **Sarah Carlson, MS**, University of Kansas
An Analysis of States: Pre-Employment Transition Services Policies
- **Sheida K Raley, MEd**, University of Kansas
Comparing the Impact of Online and Paper-and-Pencil Administration of the Self-Determination Inventory: Student Report
- **Spencer Evans**, Texas Christian University
Does the Media Get It Right? Exploring Media Portrayals of the Lived Experiences of Individuals with a Developmental Disability and Their Families
- **Mayumi Hagiwara, MS**, University of Kansas
Examining the Impact of Contextual Factors on Self-Determination of Young Adults and Adults with Disabilities
- **Calisha Chatter-Fitzhugh, EdS**, Texas Woman's University
Let's Talk about Sex, Maybe: Sex Education for People with Intellectual Disability
- **Kathryn Burke, MEd**, University of Kansas
Mapping the Literature on the Essential Characteristics of Self-Determination
- **Emily Dow**, Texas Christian University
Parent-Professional Partnership
- **Emily Tucker**, Oklahoma State University
Promoting Health and Well-Being: Translating Research into Practice
- **Sharon Delvisco**, Team Dynamics, LLC
Relationships, Sexuality & People with Intellectual Disability: Overview of Collaborative Project in Louisiana to Prevent Abuse & Exploitation

Thursday, June 27

Registration Hours
8:00 – 10:00 am

POST-CONFERENCE SESSIONS

Additional fee required

9:00 am – 12:00 noon

Fee \$45

All Means All: Community Living for People with Intellectual and Developmental Disabilities

(approved for 3 social work CEs)

Amy Hewitt, PhD, FAAIDD, University of Minnesota
Kelly Nye-Lengerman, PhD, University of Minnesota
Jerry Smith, MBA, University of Minnesota
Cliff Poetz, University of Minnesota
Katrina Simmons, University of Minnesota

Community living is a complex and ever-evolving construct that is dependent upon individual preferences, contexts, and cultural and linguistic lenses. This session will explore the pillars of community for individuals with intellectual and developmental disabilities (IDD) from housing to health, faith to citizenship, and everything in between. Key features of community living include: 1) engagement; 2) reciprocity; 3) valued social roles; and 4) connectedness. Yet, many of these features have yet to be realized for people with IDD and their families. This dynamic and interactive session will include a deeper exploration of the controversies and challenges in the pursuit of community living for people with IDD across the lifespan, while highlighting practical suggestions and interventions that have real world application. A life in the community is a human experience that should be available to all people, regardless of disability.

ROOM: STATE 3

9:00 am – 12:00 noon

Fee \$45

Finance for the Non-Finance Disability Professional

(approved for 3 social work CEs)

Margaret A. Nygren, EdD, FAAIDD, American Association on Intellectual and Developmental Disabilities
Mary Kay Rizzolo, PhD, FAAIDD, The Council on Quality and Leadership (CQL)

This session is intended to provide a basic framework for the understanding of a variety of financial tools being used in organizations. Major areas of exploration will include: developing and monitoring budgets; analyzing financial statements; Generally Accepted Accounting Principles (GAAP); audits; insurance and risk management; and taxes and reporting requirements.

ROOM: STATE 2

9:00 am – 12:00 noon

Fee \$30

Religion & Spirituality Interest Network Forum

The forum agenda will include presentation of the 2019 Henri J.M. Nouwen Award, discussion of recent gains in faith inclusion relative to literature and practice; and implications for the future for individuals with disabilities, families, support providers and faith communities.

ROOM: GOVERNORS 3

REGISTRATION IS OPEN

**2019 ANNUAL
COLEMAN INSTITUTE CONFERENCE
on Cognitive Disabilities & Technology**

October 17, 2019 | Westminster, CO



colemaninstitute.org/2019-coleman-conference/

TUESDAY, JUNE 25

12:15 – 1:45 pm

Buffet Lunch Meeting

Cost: \$20.00

Presiding: David Morstad, MEd, FAAIDD

LOCATION: GREAT RIVER 1

WEDNESDAY, JUNE 26

6:00 pm

Dinner (offsite)

Cost: \$40

Please join the Religion and Spirituality Interest Network for our Annual Dinner and enjoy a night of fellowship, fun, and networking.

LOCATION:
GRAY DUCK TAVERN
345 Wabash St N, St. Paul

THURSDAY, JUNE 27

9:00 am – 12:00 noon

Forum

Cost: \$30.00

The forum agenda will include presentation of the 2019 Henri J.M. Nouwen Award, discussion of recent gains in faith inclusion relative to literature and practice; and implications for the future for individuals with disabilities, families, support providers and faith communities.

ROOM: GOVERNORS 3



HENRI J. NOUWEN LEADERSHIP AWARD

The AAIDD Religion & Spirituality Interest Network is pleased to present the

2019 Henri J. Nouwen Leadership Award to Rev. Andrew Calder

Rev. Andrew Calder is the 2019 recipient of the Religion and Spirituality Interest Network's Henri J.M. Nouwen Award.

Rev. Calder has been an ordained Uniting Church minister for 22 years and currently serves as

Disability Inclusion Advocate for the Synod of Victoria and Tasmania in Australia, and the Director of Uniting CPE—The John Paver Centre.



Prior to his ordination in 1995 Rev. Calder was involved with a range of community and government organizations in program delivery, policy development and advocacy with people with disabilities. He was previously Senior Chaplain at Epworth Richmond Healthcare.

Rev. Calder's writing's include "People living with an intellectual disability: Spiritual Care Consideration Series" (*Meaningful Ageing Australia*, 2017); "To belong I need to be missed" (*Journal of Disability, Religion, and Health*, 2012); and "Chaplaincy now has many faiths" (*Australian Journal of Pastoral Care and Health*, 2011).

In recent years, Rev. Calder's role in encouraging and promoting the inclusion of people with disabilities has reached beyond the walls of faith communities to community and government advocacy. His work includes a Victorian Parliament Inquiry into the Social Inclusion of Victorians with a Disability; Inquiry to the Prime Minister regarding defunding of the Disability Discrimination Commissioner's role; and Inquiry to the Parliament of Victoria into abuse in disability services. In 2012, Rev. Calder was presented the Ben Bodna Award for his commitment to social justice.

Rev. Calder is currently a PhD candidate with the University of Divinity in Melbourne.

Registration Schedule

Registration will open as follows:

- Monday, June 24 8:00 am – 5:30 pm
- Tuesday, June 25 7:00 am – 5:00 pm
- Wednesday, June 26 7:00 am – 3:00 pm
- Thursday, June 27 8:00 am – 10:00 am

Admittance to the Annual Meeting

Registrants are required to wear their badges for all meeting, exhibits, and other events. Admittance to all sessions will be with a badge only. Door monitors will be instructed not to admit non-registrant attendees.

Pre- and Post-Conference Sessions

Pre- and post-conference sessions are not included with your general registration fee. They do require an additional fee, and tickets are required to attend them. If you pre-registered, a ticket will be included with your registration packet.

Silent Auction

A silent auction will be held in the Exhibit area during the regular exhibit hours. Bidding closes at 11:00 am on Wednesday, June 26. All items must be picked up by 1:00 pm on June 26.

Exhibit Hours

The exhibits are an integral part of the educational program; we invite you to visit them. A listing of exhibitors and the products they are displaying are listed on pages 53 and 56 of this program. Acceptance of exhibits by AAIDD does not imply an endorsement.

Bookstore Hours

The AAIDD Bookstore is located in the Exhibit Hall. The Bookstore will be open during regular exhibit hours. Stop by to examine our books and journals.

Attire/Dress Code

Attire at the 2019 Annual Meeting is business casual. Wear comfortable shoes and dress in layers.

Internet Access

Complimentary Wi-Fi will be available to all meeting registrants in all public lobbies and meeting spaces of the hotel. The code will be provided at the Opening Session and it will be available at registration.

Social Media

Share your experiences & photos using the hashtag #AAIDD2019

Notice of Video and Photography

By taking part in this event you grant AAIDD full rights to use the images resulting from the event’s photography/video filming, and any reproductions or adaptations of the images for publicity. This includes, but is not limited to, the right to use such images in printed or online publicity, social media, and press releases.

SOCIAL MEDIA

Keeping Up With AAIDD

CHECK OUT AAIDD ON FACEBOOK!



Like us on Facebook to connect with AAIDD and network with other disability professionals.

CHECK OUT AAIDD ON YOUTUBE!



You will find a wide variety of videos on topics ranging from

the justice system and intellectual disability to special education best practices to classification and intellectual disability.

CHECK OUT AAIDD ON TWITTER!



Twitter is a great way to stay connected to AAIDD. We regularly post information about upcoming events and

publications in addition to keeping you updated on the latest in national disability news.

CHECK OUT AAIDD ON LINKEDIN!



LinkedIn has the world’s largest professional network on the internet with 161 million members. Joining our LinkedIn

group is a great way to connect with professionals in the field you may not come into contact with otherwise.



POSTERS | LOWER LEVEL | MINNESOTA GRAND BALLROOM

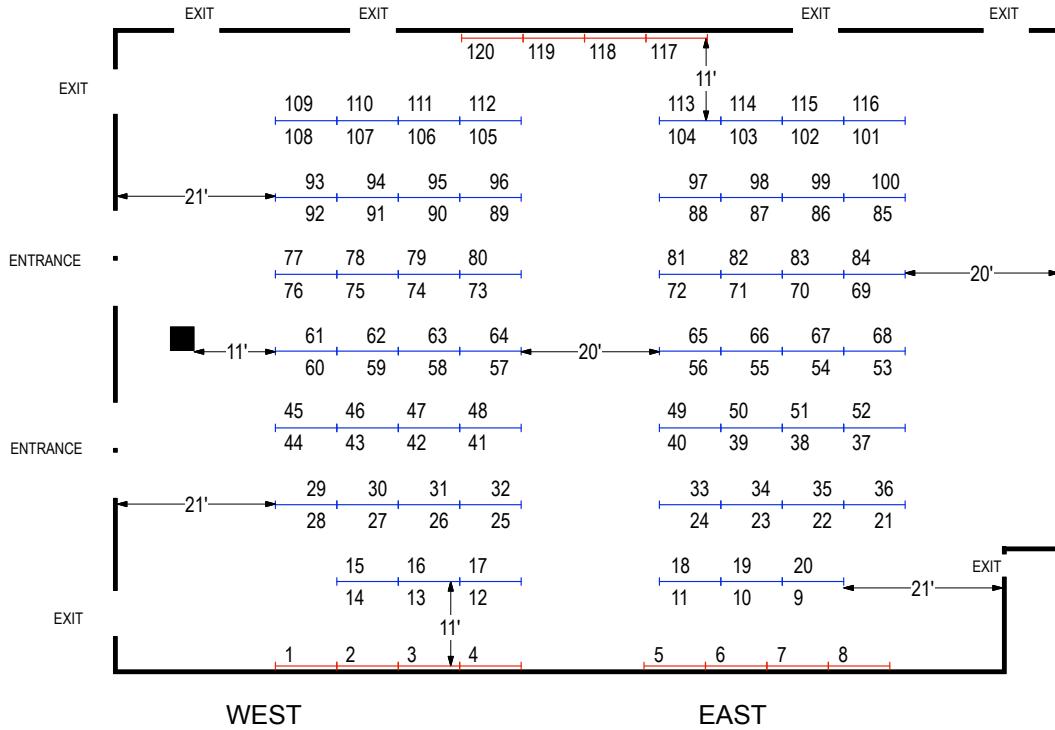
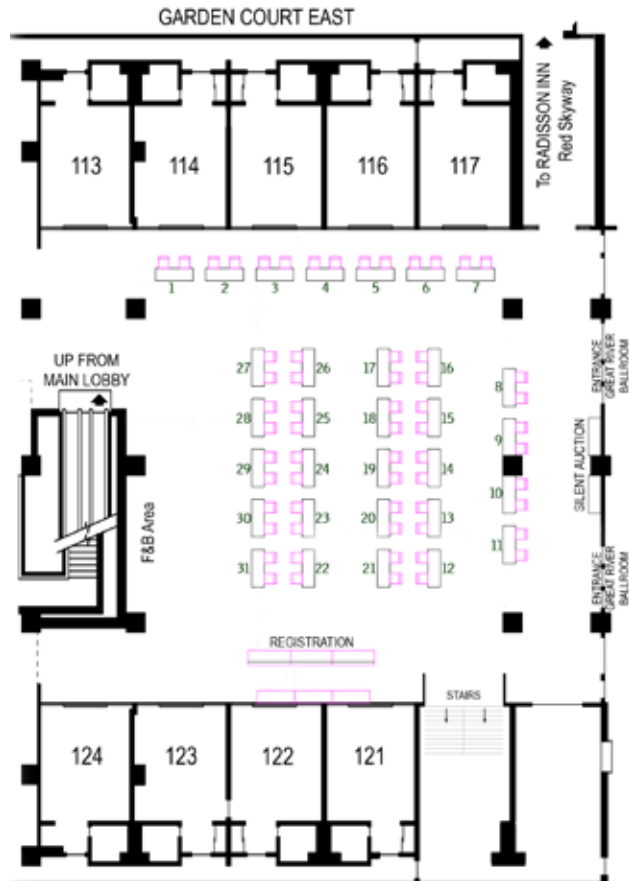


EXHIBIT HALL | FIRST LEVEL | GARDEN COURT



Tuesday, June 26 | 5:00 – 7:00 pm

ASSESSMENT

BOARD #1

Examining Psychometric Properties of the Chinese Version of Self-Determination Inventory

Tianxi Xu, PhD, Central China Normal University
Xueqin Qian, PhD, University of Minnesota
Karrie Shogren, PhD, FAAIDD, University of Kansas

BOARD #2

Initial Data of the Supports Intensity Scale for Adults in Turkish Version

Atilla Cavkaytar, PhD, Anadolu Üniversitesi
Emine Sema Batu, PhD, Anadolu Üniversitesi
Yasemin Ergenekon, PhD, Anadolu Üniversitesi
Özlem Gümüşkaya, PhD, Sakarya University
Aysun Çolak, PhD, Anadolu Üniversitesi
Tahir Mete Artar, MA, Anadolu Üniversitesi
Gizem Yildiz, MA, Anadolu Üniversitesi
Mustafa Uluyol, MA, Anadolu Üniversitesi
James R. Thompson, PhD, FAAIDD, University of Kansas
Marc J. Tassé, PhD, FAAIDD, The Ohio State University

BOARD #3

Online Peer Review (PRoBeS) Committee Scoring System: Pilot Project Software Application

Paul Kolstoe, PhD, FAAIDD, North Dakota Department of Human Services
Matthew D. Russell, MS, North Dakota Department of Human Services
Holly E. Johnson, MS, North Dakota Department of Human Services
Heidi J. Paulson, PsyD, North Dakota Department of Human Services

BOARD #4

Piloting a Scalable Online Intervention: Charting the LifeCourse Family Group

Jean Winsor, PhD, University of Massachusetts Boston
Jaimie Timmons, MSW, University of Massachusetts Boston
John Kramer, PhD, University of Massachusetts Boston
Allison Hall, PhD, University of Massachusetts Boston

BOARD #5

Psychometric Evaluation of the National Core Indicators Adult Consumer Survey (NCI-ACS) Sub-Domains Using Item Response Theory

Youngsoon Kang, MA, University of Minnesota
Renata Ticha, PhD, University of Minnesota

BOARD #6

Understanding Your System through Data Integration and Visualization: How to Make the Most of Your Data

Megan Villwock, MPH, MSW, Human Services Research Institute
John Agosta, PhD, Human Services Research Institute

BOARD #7

Working with Quality Improvement Data: Exploring Results and Identifying Paths Forward Through Interactive Data Visualization

Henan Li, PhD, Human Services Research Institute
Alexandra Bonardi, MS, MHA, FAAIDD, Human Services Research Institute
Megan Villwock, MPH, MSW, Human Services Research Institute

BOARD #8

2013-18 Research Findings from the Research and Training Center on Community Living, University of Minnesota

Danielle Mahoehney, University of Minnesota
John Smith, University of Minnesota
Jerry Smith, MBA, University of Minnesota

COMMUNICATION & HIGH SUPPORT NEEDS

BOARD #9

Assessment of Communication Skills and Inner States within the Context of People with Profound Intellectual and Multiple Disabilities

Meike Engelhardt, MA, Pädagogische Hochschule Heidelberg
Torsten Krämer, MA, Pädagogische Hochschule Heidelberg
Teresa Sansour, PhD, Pädagogische Hochschule Heidelberg
Peter Zentel, PhD, Pädagogische Hochschule Heidelberg

BOARD #10

Beliefs About Transition-Age Students Participating in Their Health Care at School

Sarah Ballard, PhD, Illinois State University

BOARD #11

Facilitating Engagement in Inclusive Classrooms for Students with Extensive Support Needs

Alison Zagona, PhD, University of New Mexico
Kirsten Lansey, MA, University of Arizona
Jennifer Kurth, PhD, University of Kansas

BOARD #12

Including Students with Severe Disabilities in SWPBIS: Access to a Tier 1 Intervention

Lyndsey Aiono Conradi, MEd, University of Utah
 John M. Jameson, PhD, University of Utah
 Aaron J. Fischer, PhD, University of Utah
 Michael Farrell, MEd, University of Utah
 Carrie Eichelberger, MS, University of Utah
 Joanna Ryan, MEd, University of Utah
 Olivia Fudge Coleman, MEd, University of Utah
 Jessica A. Bowman, MEd, University of Utah
 John McDonnell, PhD, University of Utah

BOARD #13

Knowledge Translation: Interpreting AAIDD Journal Articles for Non-Research Audiences Through Videos

Lindsey Polansky, American Association on Intellectual and Developmental Disabilities

BOARD #14

Needs Assessment for Individuals with Autism who are Minimally Verbal

Stacey Brandjord, MA, University of Minnesota
 Amy Esler, PhD, University of Minnesota

BOARD #15

Outcomes of Inclusive Education for Students with Significant Cognitive Disability

Elissa Lockman Turner, MA, University of Kansas
 Jennifer Kurth, PhD, University of Kansas
 Alison Zagona, PhD, University of New Mexico
 Molly Siuty, PhD, Portland State University
 Heather Fitzpatrick, MA, University of Northern Colorado
 Kristin Krupa Burnette, MA, University of North Carolina Greensboro

BOARD #16

Teachers' Instructional Language with Verbal and Non-Verbal Students in a Self-Contained Classroom

Wenjing Zheng, PhD, Minot State University

BOARD #17

Theory vs. Practice: Library Book Clubs and Theories of Special Education

Matthew Conner, PhD, University of California, Davis
 Leah Plocharczyk, MA, MLS, Florida Atlantic University

CULTURE

BOARD #18

Diversity and AAIDD Membership: Insights into Current Association Membership Demographics

Laura Thorn, American Association on Intellectual and Developmental Disabilities

BOARD #19

Following FACES: A Follow-Up Study on a Parent-Training Program for African American Families of Children with Autism

Jamie Pearson, PhD, North Carolina State University

BOARD #20

Meeting FACES to Meet Needs: A Community-Based Empowerment Program for Underrepresented Families of Children with Autism

Jamie Pearson, PhD, North Carolina State University

BOARD #21

Four-County Community Needs Assessment in Colorado: What is Culturally Competent Healthcare for People with Intellectual and Developmental Disabilities?

Nichole Guerra, DBA, The Resource Exchange
 Shelby Shively, MA, The Resource Exchange
 Lauren Breslin, The Resource Exchange

BOARD #22

Low Prevalence of Neurodevelopmental Disabilities Among Latino/Hispanic Children: The Role of Culture and Healthcare Access

Sarah Garcia, MPH, University of Minnesota
 Jennifer Hall-Lande, PhD, University of Minnesota
 Kelly Nye-Lengerman, PhD, University of Minnesota

BOARD #23

Racial/Ethnic Disparities in Postschool Outcomes of Young Adults with IDD

Wei Song, PhD, University of Minnesota

BOARD #24

Parental Views on Self Determination of Children with Autism Spectrum Disorder: A Cross Cultural Study with Turkish and American Parents

Deniz Tekin Ersan, PhD, Mugla Sıtkı Koçman Üniversitesi
 Michael Wehmeyer, PhD, FAAIDD, University of Kansas

BOARD #25

School Experiences and Well-Being of Latina Mothers of Children with Intellectual and Developmental Disabilities (IDD)

Kristina Rios, MEd, University of Illinois at Urbana-Champaign
 Janeth Aleman Tovar, MEd, University of Illinois at Urbana-Champaign
 Meghan Burke, PhD, University of Illinois at Urbana-Champaign

BOARD #26

Asian Immigrant Parents' Experiences and Coping Strategies while Using Services for their Child with Developmental Disabilities: A Meta-Synthesis Study

I-Ting Hwang, MS, Boston University
Jessica Kramer, PhD, University of Florida
Ellen Cohn, ScD, Boston University

EDUCATION

BOARD #27

Does Location Matter? A Single State Case Study Examining Geographic Differences in School-Based ASD Identification Practices

Jonathan Safer-Lichtenstein, University of Oregon
Kyle Reardon, MA, University of Oregon
Laura Lee McIntyre, PhD, FAAIDD, University of Oregon

BOARD #28

Perceptions of Inclusive Education in Mexico City: An Exploratory Study

Carlos Lavin, MAT, George Mason University
Grace Francis, PhD, George Mason University
Linda Mason, PhD, George Mason University

BOARD #29

Student and Teacher Perceptions of a Web-Based Intervention for Selecting High School Courses for Students with IDD

Cathy Haarstad, MS, Minot State University
Evan Borisinkoff, PhD, Minot State University
Rhonda Weathers, MS, Minot State University

BOARD #30

Student Led IEPs

Kendal Swartzentruber, MA, James Madison University
Daniel Biegun, MEd, Virginia Department of Education

BOARD #31

Student Perceptions of Self-Determination Skills and Involvement in the IEP Process

Janessa Viall, MS, Minot State University
Evan Borisinkoff, PhD, Minot State University

EMPLOYMENT

BOARD #32

Are Effective Employment Support Practices Really Being Implemented?

Amy Gunty, MA, University of Minnesota
Kelly Nye-Lengerman, PhD, University of Minnesota
Alberto Migliore, PhD, University of Massachusetts Boston
John Butterworth, PhD, University of Massachusetts Boston

BOARD #33

Barriers to Work-Based Learning Experiences for Students with Intellectual Disability

Magen Rooney-Kron, MEd, University of Illinois at Urbana-Champaign
Stacy Dymond, PhD, University of Illinois at Urbana-Champaign

BOARD #34

Work-Based Learning Experiences and Students with Intellectual Disability

Magen Rooney-Kron, MEd, University of Illinois at Urbana-Champaign
Stacy Dymond, PhD, University of Illinois at Urbana-Champaign

BOARD #35

Effectiveness of Pre-Employment Independent Life Education Program Designed for Young Adults with Intellectual Disability

Gizem Yildiz, MA, Anadolu Üniversitesi
Atilla Cavkaytar, PhD, Anadolu Üniversitesi

BOARD #36

Effectiveness of the Parent Training Program to Teaching Social Skills Based on Cognitive Process Approach to Adults with Intellectual Disability

Tahir Mete Artar, MS, Anadolu Üniversitesi
Atilla Cavkaytar, PhD, Anadolu Üniversitesi

BOARD #37

Rehabilitation Research and Training Center (RRTC) on Advancing Employment for Individuals with Intellectual and Developmental Disabilities: State Employment System Performance Composite Indicator

Jean Winsor, PhD, University of Massachusetts Boston
John Shepard, University of Massachusetts Boston

BOARD #38

Using the Voices of Families, Educators, and Agencies to Inform Statewide Pre-Employment Transition Services

Michele Schutz, MEd, Vanderbilt University
Erik Carter, PhD, FAAIDD, Vanderbilt University

FAMILIES

BOARD #39

Autism Spectrum Disorder and the Sibling Relationship: A Phenomenological Study

Emma Erickson, MA, University of South Dakota
S. Jean Caraway, PhD, University of South Dakota
Alison Vogelsang, MA, University of South Dakota
Tanya Marie Ochsner, MA, University of South Dakota
Chelsey Vanness, University of South Dakota

BOARD #40

Case Studies of Parents with Disabilities: Support Needs and Participation in an Intervention Aimed at Improving Parental Supports

Sharyn DeZelar, PhD, University of Minnesota
Elizabeth Lightfoot, PhD, University of Minnesota

BOARD #41

Does the Media Get it Right? Exploring Media Portrayals of the Lived Experiences of Individuals with a Developmental Disability and their Families

Spencer Evans, Texas Christian University
Emily Dow, Texas Christian University
Kirsten Johnston, Texas Christian University
Aesha John, PhD, Texas Christian University

BOARD #42

Empowering Families as Advocates: Translating Research and Practice to Policy Issues

Stephanie Coleman, University of Kansas
Susan Palmer, PhD, FAAIDD, University of Kansas

BOARD #43

Perceptions of Parents of Children with Williams Syndrome about Supporting Their Young Children's Foundational Skills for Self Determination: A Cross Cultural Study with Turkish and American Parents

Susan Palmer, PhD, FAAIDD, University of Kansas
Deniz Tekin Ersan, PhD, Mugla Sıtkı Koçman Üniversitesi

BOARD #44

Experiences and Adaptation of Families of Young Children Diagnosed with Global Developmental Delay or Intellectual Disability

Nadia Abouzeid, PhD, Université du Québec à Montréal
Melina Rivard, PhD, Université du Québec à Montréal
Diane Morin, PhD, FAAIDD, Université du Québec à Montréal
Marjorie Morin, Université du Québec à Montréal

BOARD #45

Extending the Family Support for Individuals with IDD Across the Globe

Chung eun Lee, PhD, University of Illinois at Urbana-Champaign
Mayumi Hagiwara, MS, University of Kansas
Chun-yu Chiu, PhD, FAAIDD, National Taiwan Normal University

BOARD #46

The Tale of Bamboo Sibs: Experiences and Support Strategies for Pre-Adult Siblings of Individuals with Intellectual Disability and Autism in Taiwan

Chun-yu Chiu, PhD, FAAIDD, National Taiwan Normal University

BOARD #47

Future Planning Among Families of Individuals with Intellectual and/or Developmental Disabilities (IDD): A Systematic Literature Review

Chung eun Lee, PhD, University of Illinois at Urbana-Champaign
Meghan Burke, PhD, University of Illinois at Urbana-Champaign

BOARD #48

Not Just a Job: Investigating the Effect of a Peer-Mediated Intervention on Inclusion and Friendship Development for Young Adults on a University Campus

Blair Dammerman, MA, Michigan State University
Connie Sung, PhD, Michigan State University
Marisa H. Fisher, PhD, Michigan State University
Lindsay Athamanah, PhD, Michigan State University
Benjamin Strong, Michigan State University

BOARD #49

Parental Socialization of Emotion: Is There a Difference Between Mothers of Children With or Without Intellectual Disability?

Carole Legare, Université du Québec à Montréal
Diane Morin, PhD, FAAIDD, Université du Québec à Montréal
Nathalie Poirier, PhD, Université du Québec à Montréal

BOARD #50

Parent-Centered Supportive Intervention: Modification of PATH to Support Parents with Disabilities

Sharyn DeZelar, PhD, University of Minnesota
Elizabeth Lightfoot, PhD, University of Minnesota

BOARD #51

Promising Practices in Support of Families of People with Intellectual Disability: Three Evidence-Based Practices

Meghan Burke, PhD, University of Illinois at Urbana-Champaign
Katie Keiling Arnold, MS, University of Illinois at Chicago

BOARD #52

Promoting Research on Family Caregiving Support in the United States: A Strategic Plan

Brian R. Grossman, PhD, MPH, University of Illinois at Chicago

BOARD #53

Self-Efficacy of Family Caregivers of Older Adults with Cognitive Impairment: A Concept Analysis

Tarik S. Khan, MSN, University of Pennsylvania

BOARD #54

The Application of Genetic Testing in Identifying and Treating Developmental Disorders: A Family's Journey

Brian Van Ness, PhD, University of Minnesota
Jody Hofer Van Ness, MA, University of Minnesota

BOARD #55**The Transition to Parenthood: Down Syndrome, Mood Disorders, and Social Media**

Rebecca Kammes, MA, Michigan State University
 Hannah Schultheiss, Michigan State University
 E. Megan Lachmar, MS, Michigan State University
 Sarah Douglas, PhD, Michigan State University

BOARD #56**Well-Being of Parents Serving as the Employer of Record in a Consumer-Directed Medicaid Waiver Program**

Marji Erickson Warfield, PhD, Brandeis University
 Heba Naim Ali, MD, MS, Brandeis University

HCBS**BOARD #57****Empowering People with Intellectual Disability and Families: The HCBS Final Rule in Practice**

Jamie Ray-Leonetti, JD, Temple University
 Celia Feinstein, MEd, Temple University
 Angela Martin, Wayne State University
 Mary St. Jacques, MS, University of New Hampshire

BOARD #58**Evaluation of a Book Club Program**

Kirsten Johnston, Texas Christian University
 Emily Dow, Texas Christian University
 Spencer Evans, Texas Christian University
 Aesha John, PhD, Texas Christian University

BOARD #59**Facilitators to Implementing and Sustaining Best Practices in Community-Based Residential Settings: Translating Research into Practice**

Laurie Kincade, MA, University of Minnesota
 John Smith, MA, University of Minnesota
 Xueqin Qian, PhD, University of Minnesota
 Renata Ticha, PhD, University of Minnesota
 Brian Aberly, PhD, University of Minnesota

BOARD #60**The Correlates of Residential Living for Adults with Intellectual and Developmental Disabilities**

Marie Paula Mello, PhD, St. John's University
 Robert Hodapp, PhD, Vanderbilt University

BOARD #61**Using Data to Drive Disability Workforce Training: Lessons Learned from the LEND Quality Improvement Network (LPQI)**

Ben Kaufman, Association of University Centers on Disabilities
 Jeffrey P. Brosco, MD, PhD, University of Miami

HEALTH**BOARD #62****A Critical Review of 14 Years of Video Modeling as an Effective Evidence Based Practice for Students with Emotional and Behavioral Disorders**

Soonhwa Seok, PhD, Korea University
 Boaventura Dacosta, PhD, Solers Research Group

BOARD #63**Augmenting Antipsychotic Medication Using Intensive ABA Intervention to Treat Severe Problem Behaviors: A Literature Review**

Suzanne Moore, MA, University of South Carolina

BOARD #64**Does Medical Home Mediate the Reduced Likelihood of Preventive Medical Visit Among Children with Developmental Disabilities?**

Patricia Daniel, PhD, Georgia State University
 Rebecca Wells, PhD, University of Georgia
 Brian Barger, PhD, Georgia State University

BOARD #65**Feeling Good About Your Smile—Oral Health Intervention**

Kim Bruns, MS, University of Kansas
 Karrie Shogren, PhD, FAAIDD, University of Kansas

BOARD #66**Gaps and Opportunities in Cancer Control for Individuals with Intellectual and/or Developmental Disabilities**

Heather J. Williamson, DrPH, Northern Arizona University
 Julie Armin, PhD, University of Arizona,
 Grace Samtani, Texas A&M University
 Jennifer Etcitty, Northern Arizona University
 Tara Chico-Jarillo, University of Arizona
 Carol Howe, University of Arizona

BOARD #67**Research to Change Practice and Policy: Emotional Self-Regulation Through Movement & Play!**

Michelle Boulanger Thompson, Virginia Commonwealth University

BOARD #68**Interdisciplinary Collaboration for Student Success: Looking at Sensory Through the ABA Lens**

Michelle Boulanger Thompson, MS, Virginia Commonwealth University
 Paige J. Carter, Virginia Commonwealth University

BOARD #69

Differences of Phenotype and Cognitive Ability Measurements Among People with Autism Spectrum Disorder

Si Cheng, MS, University of Rochester Medical Center

BOARD #70

Knowledge Translation: Power Through Research, Policy, and Practice

Nadja Ruzica, MPP, Special Olympics

Megan Strembitsky, MPM, Special Olympics

BOARD #71

Mental Health and Disability on a College Campus: Accounts from College Students

Megan Fujita, MSW, George Mason University

Grace L. Francis, PhD, George Mason University

Jodi M. Duke, EdD, George Mason University

BOARD #72

Special Olympics Emotional Wellness Program, Strong Minds

Jamie Valis, PhD, Special Olympics

BOARD #73

The Experiences of Families in Accessing Health Services for Children with Intellectual and Developmental Disabilities in Ghana

De-Lawrence Lamptey, PhD, Holland Bloorview Kids Rehabilitation Hospital

BOARD #74

Training in Developmental Disabilities in Canadian Psychiatry Residency Programs

Sarah O'Flanagan, University of Western Ontario

Volker Hocke, MD, University of Western Ontario

Rob Nicolson, MD, University of Western Ontario

BOARD #75

Training in Developmental Disabilities in Canadian Psychiatry Residency Programs: Resident Perspectives

Sarah O'Flanagan, University of Western Ontario

Sandi Hallock, London Health Sciences Center

Rob Nicolson, MD, University of Western Ontario

BOARD #76

Traits, Traumas, and Treatments: The Many Associations Between ACEs and Autism

Robin Dodds, PhD, California State University Los Angeles

BOARD #77

Trauma Treatment for Individuals with Intellectual and Developmental Disabilities (IDD) with Eye Movement Desensitization and Reprocessing (EMDR)

Marklyn Champagne, MSW, FAAIDD, Consultant

BOARD #78

Using Health-Related Quality of Life to Evaluate Cross-Systems Care Integration in a Specialty Primary Care Clinic for Adults with Intellectual and Developmental Disabilities (IDD)

Nichole Guerra, DBA, The Resource Exchange

Shelby Shively, MA, The Resource Exchange

Lauren Breslin, The Resource Exchange

BOARD #79

Using Virtual Reality to Empower Individuals with IDD in Leisure-Time Physical Activity

MaryAnn Devine, PhD, Kent State University

Sheryl Chatfield, Kent State University

Jong-hoon Kim, Kent State University

Gokarna Sharma, Kent State University

BOARD #80

Vaccine Hesitancy in Parents of Children with Down Syndrome: Implications for Social Work

Mark McManus, PhD, MSSW, University of Akron

Diane L. Langkamp, MD, MPH, Akron Children's Hospital

INCLUSION & QUALITY LIFE

BOARD #81

Assistive Technology and Social Media Use by Adult Patients with IDD

Patricia Patrick, DrPH, New York Medical College

Jason Xenakis, MD, MPH, New York Medical College

Izel Obermeyer, MS, New York Medical College

Doug Crocitto, New York Medical College

David M. O'Hara, PhD, New York Medical College

BOARD #82

Creating an Art Exhibition Through the Shared Experiences of Grief: Adults with Intellectual and Developmental Disabilities and University Students

Yumi Shirai, PhD, University of Arizona

Carissa DiCindio, PhD, University of Arizona

BOARD #83

Doing, Being, Belonging: A Photo Elicitation on the Meaning of Well-Being of Adults with Intellectual Disability

Lynda Lahti Anderson, PhD, MPH, University of Minnesota

BOARD #84

Exploring the Foundations of Friendship Formation for Individuals With and Without IDD

Cynde K. Josol, Michigan State University

Lindsay Athamanah, PhD, Michigan State University

Marisa H. Fisher, PhD, Michigan State University

BOARD #85

Family Heritage: Family Photographs as a Source of Information When Researching about Family Quality of Life

*Raquel Alveirinho Correia, Universidade de Coimbra
Maria Joo Seabra Santos, PhD, Universidade de Coimbra*

BOARD #86

Implementing Education, Research, Policy, and Practice for Individuals with IDD

*Susan Palmer, PhD, FAAIDD, University of Kansas
Kendra Williams-Diehm, PhD, University of Oklahoma
Deborah Taub, PhD, Trinity Washington University
Leena Landmark, PhD, Sam Houston State University*

BOARD #87

Inclusion and Accessibility Through AUCD's Research Dissemination

*Luis Valdez-Lopez, MPH, Association of University Centers on Disabilities
John Tschida, MPP, Association of University Centers on Disabilities*

BOARD #88

Keys to Community Living for People with Intellectual and Developmental Disabilities: Results and Knowledge Translation of Them from the Research and Training Center on Community Living 2013-2018

*Amy Hewitt, PhD, FAAIDD, University of Minnesota
Jerry Smith, MBA, University of Minnesota
Kelly Nye-Lengerman, PhD, University of Minnesota
John Smith, MSW, University of Minnesota
Katrina Simons, University of Minnesota*



BOARD #89

Knowledge is Empowering: Including Participants with Disabilities and Professionals in the Research Process

Helen Rottier, University of Illinois at Chicago

BOARD #90

Making Research Briefs Accessible Online

Drew Egli, MS, University of Illinois at Chicago

BOARD #91

Perspectives of Young Adults with Neurodevelopmental Disorders on the Research Use of Electronic Health Records

*Laura Wagner, MPH, RTI International
Melissa Raspa, PhD, RTI International
Anne Edwards, RTI International
Sara Andrews, MAT, MPH, RTI International
Lauren Turner-Brown, PhD, University of North Carolina at Chapel Hill
Rebecca Moultrie, RTI International
Marykate Frisch, University of North Carolina at Chapel Hill*

BOARD #92

Promoting Quality of Life of Adults with Intellectual Disability: A Social Learning Group Intervention Model, the Cycle of Internalized Learning (CIL)

*Shunit Reiter, PhD, University of Haifa
Ran Neuman, PhD, The Academic College of Zfat*

BOARD #93

Sid Katz Mentorship Program

Charlene Walker, Community Access Unlimited

BOARD #94

The National Center on Advancing Person Centered Practices and Systems

*Alexandra Bonardi, MS, MHA, FAAIDD, Human Services Research Institute
Bevin Croft, PhD, Human Services Research Institute
Shawn Terrell, MSW, Administration on Intellectual and Developmental Disabilities
Melissa Burnett, Human Services Research Institute*

BOARD #95

They're Able to Shift the Course of Science: Fostering Inclusive Research Partnerships with People with Intellectual Disability—A Tool to Enhance Translation to Practice

*Ariel Schwartz, PhD, Boston University
Jessica Kramer, PhD, University of Florida
Katherine McDonald, PhD, Syracuse University
Ellen Cohn, ScD, Boston University*

BOARD #96

The Experience of Self-Stigma Among People with Intellectual Disability

Kristin Dell'Armo, MA, MAT, The Ohio State University
Marc J. Tassé, PhD, FAAIDD, The Ohio State University

BOARD #97

Who's Connected to Whom and How Do We Measure It? A Systematic Review of Egocentric Network Methods for Adults with IDD

Kim W. Fisher, PhD, FAAIDD, University of Illinois at Urbana-Champaign
Claire Stelter, MEd, University of Illinois at Urbana-Champaign
Marissa Meyer, University of Illinois at Urbana-Champaign

POLICY

BOARD #98

An Ethnographic Study of Policy Processes and the Lived Experiences of Deinstitutionalization at Pennsylvania's Hamburg State Center

Sally Gould-Taylor, PhD, Temple University
K. Eva Weiss, MA, Temple University
Grace Cooper, Temple University

BOARD #99

An Issue of Civil Rights: A Confirmatory Analysis of Standards of Proof and Olmstead Claims

Lauren Ricciardelli, PhD, Troy University
Adam Quinn, PhD, University of Birmingham
Larry Nackerud, PhD, University of Georgia

BOARD #100

Children with Autism Spectrum Disorder Involved in Child Welfare: Disparities and Practice Implications

Sharyn DeZelar, PhD, University of Minnesota

BOARD #101

Forced Exclusion: A Mixed Methods Approach to Understanding the Criminalization of Immigration and Intellectual Disability

Larry Nackerud, PhD, University of Georgia
Adam Quinn, MSW, University of Georgia
Lauren Ricciardelli, PhD, Troy University

BOARD #102

Deserving but Not Entitled: How the Social Construction of Autism Affects Federal Policy

Giuseppina Chiri, PhD, RTI International
Meredith Bergey, PhD, MPH, MSc, Villanova University

BOARD #103

Minnesota's Path Towards Individual Budgets

Jami Petner-Arrey, PhD, Human Services Research Institute
Colleen Kidney, PhD, Human Services Research Institute
Meghan Lindblom, MPP, Minnesota Department of Human Services
Colin Stemper, MPP, Minnesota Department of Human Services

BOARD #104

Past, Present, Future: Research Network to Expand MN's Understanding of Neurodevelopmental Disorders

Jaclyn Gunderson, MA, University of Minnesota
Jacob Suma, MD, PhD, University of Minnesota

BOARD #105

Redesigning Medicaid Funding for Services for People with Disabilities in Minnesota

Brittany Taylor, MSSW, Human Services Research Institute
Meghan Lindblom, Minnesota Department of Human Services
Colin Stemper, Minnesota Department of Human Services
Mary Sowers, National Association of State Directors of Developmental Disability Services

SELF DETERMINATION

BOARD #106

Making My Own Way in the World Andy Hofer, Self-Advocate

Jody Hofer Van Ness, MA, University of Minnesota
Darren Schweiger, Direct Support Professional

BOARD #107

Mapping the Literature on the Essential Characteristics of Self-Determination

Kathryn Burke, MEd, University of Kansas
Karrie Shogren, PhD, FAAIDD, University of Kansas
Sarah Behrens, MSW, University of Kansas

BOARD #108

Meta-Synthesis of Studies Examining People's Perceptions about Self-Determination of People with Disabilities

Mayumi Hagiwara, MS, University of Kansas
Karrie Shogren, PhD, FAAIDD, University of Kansas
Elissa Lockman Turner, MA, University of Kansas

BOARD #109

The Power to Lead: Participant Directed Services and the Role of Supports Brokers in Creating Inclusive Communities

Jamie Ray-Leonetti, JD, Temple University
Marian Frattarola-Saulino, MSW, Values Into Action

BOARD #110

Using Social Role Valorization to Inform Modern Self-Determination Interventions

Drew Egli, MS, University of Illinois at Chicago

BOARD #111

What Role do Individuals with Disabilities Play in Creating Inclusion?

Jeff Arseneaux, Consultant

TRANSITION & POST SECONDARY EDUCATION

BOARD #112

A Path Analysis Assessing Financial Capability Among People with Disabilities

Stephen McGarity, PhD, University of Tennessee

BOARD #113

Best Practices in Assessing Student Learning Outcomes in Inclusive Postsecondary Education Programs for Youth with IDD

Carol Britton Laws, PhD, MSW, FAAIDD, University of Georgia

BOARD #114

Examining Transition Planning Knowledge Among Parents of Students with ASD

*Stacey Brandjord, MA, University of Minnesota
Rebekah Hudock, PhD, University of Minnesota*

BOARD #115

Parental Concerns Related to the Transition to Independence in Youth with Autism Spectrum Disorder

*Catherine Burrows, PhD, University of Minnesota
Rebekah Hudock, PhD, University of Minnesota*

BOARD #116

Experiences of College Students with Disabilities: A Mixed-Methods Study

*Grace Francis, PhD, George Mason University
Jodi M. Duke, EdD, George Mason University*

BOARD #117

Outcome Analysis of Inclusive Post Secondary Education

*Ann Marie Licata, PhD, Millersville University
James Conroy, PhD, FAAIDD, Consultant*

BOARD #118

The Impact of Goal Types and Personal Factors on Goal Attainment for Transition-Age Students with Intellectual Disability

*Kathryn Burke, MEd, University of Kansas
Karrie A. Shogren, PhD, FAAIDD, University of Kansas*

SAVE THE DATE

March 23 – 25, 2020
Washington, DC



**2020
DISABILITY
POLICY
SEMINAR**
WASHINGTON, DC

www.disabilitypolicyseminar.org

SAVE THE DATE



**REINVENTING
QUALITY 2020**

August 9 – 11, 2020
Baltimore, MD

www.reinventingquality.org



You are the bridge!

Employment service professionals improve employment opportunities for jobseekers with disabilities by building better relationships with businesses.

The **Diversity Partners Program** offers the following services:

- Online training and resources to help organizational leaders build employer partnerships and conduct agency-level planning
- Online tools and resources for frontline staff on over 20 topics related to disability and employment, business relationships, and policy initiatives
- On-demand technical assistance for employment service professionals

For more information or to request technical assistance and training, please email us at info@buildingdiversitypartners.org or call us at **1-888-296-3202**.

www.BuildingDiversityPartners.org

We invite you to visit our exhibitors and contact those companies whose products or services interest you.

The exhibits are located in **Great River Court**.

AAIDD

Contact: Michael Winfield
 Phone: 301-392-2486
 Email: mwinfield@aaidd.org
 Website: aaidd.org

The *American Association on Intellectual and Developmental Disabilities (AAIDD)* is the oldest and largest professional society concerned with understanding the causes of, and effective interventions for, intellectual and developmental disabilities. AAIDD works to achieve its mission through its three peer-reviewed journals, catalog of books and assessment materials, educational programming, and public policy positions.

ANTHEM



Contact: Patrick Cokley
 Phone: 202-548-6564
 Email: patrick.cokley@anthem.com
 Website: anthem.com

Anthem, Inc., is the nation's leading provider of health care solutions for state-sponsored programs. Our affiliate health plans partner with states across the country to serve nearly 6 million people in Medicaid, CHIP, and other state programs. We bring deep organizational expertise and passion for working with state partners to develop dynamic and innovative health care programs that improve the availability and quality of health care to individuals.

BROOKES PUBLISHING CO.

Contact: Melanie Allred
 Phone: 410-337-9580
 Email: mallred@brookespublishing.com
 Web: brookespublishing.com

At *Brookes*, we share your commitment to helping all people meet their potential. A trusted independent company for 40+ years, we partner with top disability experts to bring you the best, most practical resources on inclusion, transition, communication, employment, and more. We stand with you to support better lives and opportunities for people with disabilities.

CAPGROW PARTNERS

Contact: Megan Hartnett
 Phone: 773-360-6159
 Email: mhartnett@capgrowpartner.com
 Web: capgrowpartners.com

CapGrow Partners helps organizations provide safe and appropriate housing for the individuals they support. By assuming all the real estate-related responsibilities

associated with acquiring community-based homes, we enable organizations to focus on improving the lives of those they help. We buy the house; you make it a home.

COLEMAN INSTITUTE FOR COGNITIVE DISABILITIES



Contact: Jennifer Kraft
 Phone: 303-735-1748
 Email: jennifer.kraft@cu.edu
 Web: colemaninstitute.org

The *Coleman Institute for Cognitive Disabilities* of the University of Colorado catalyzes and integrate advances in science, engineering, and technology to promote the quality of life and independent living of people with cognitive disabilities. We are committed to providing scientific, technological, and public policy leadership to strengthen the voice of persons with cognitive disabilities and their families in our society.

AAIDD CREATIVE ARTS THERAPY INTEREST NETWORK

Contact: Yumi Shirai
 Email: yumish@email.arizona.edu

The *AAIDD Creative Arts Therapy Interest Network* seeks to increase knowledge and awareness of the therapies that utilize self-expression through creative arts. Stop by and see the video exhibit "Creativity: The Path to Belonging".

DEVELOPMENTAL DISABILITIES NURSES ASSOCIATION (DDNA)

Contact: Kathy Brown
 Phone: 800-888-6733
 Email: kathybrown@palrx.com
 Web: ddna.org

DDNA is the premiere association for nurses who provide care and support to persons with intellectual and developmental disabilities. As nurses in the specialized field of IDD, our mission is to continually develop our expertise to assure the highest quality of life for the people we support throughout their lifespan.

DEPARTMENT OF DISABILITIES AND HUMAN DEVELOPMENT, UNIVERSITY OF ILLINOIS

Contact: Cheryl Johnson
 Phone: 312-413-1466
 Email: cherylj@uic.edu
 Web: go.uic.edu/DHD

The *Institute on Disability and Human Development at the University of Illinois at Chicago* is a federally funded University Center of Excellence in Developmental Disability (UCEDD) in Education, Research, and Service. Please visit our website for more information on our undergraduate and graduate training programs & clinical and research centers.

HEALTH RISK SCREENING, INC.

Contact: Rob Refo
Phone: 727-437-3201
Email: rob@hrstonline.com
Web: hrstonline.com

The *Health Risk Screening Tool (HRST)* is a web-based instrument developed to detect health risks associated with IDD and prompt for special attention and prevention. This powerful tool, coupled with our library of webinars, posters and e-learning courses makes us the go-to company for those looking to reduce or prevent health risks.

HOST HOME HELPERS

Contact: Shidiah Clark
Phone: 308-817-0242
Email: clarshidiah@gmail.com
Web: hosthomehelpers.com

Host Home Helpers helps residential service agencies acquire and retain high-quality employees and contractors, provide in depth education and resources, and build cohesion among teams to improve agency reputation, profits, and community reach.

LEAHY LIFE PLAN

Contact: Michele Leahy
Phone: 484-238-0841
Email: michele@leahylifeplan.com
Web: leahylifeplan.com

Leahy Life Plan specializes in aligning with other professionals such as financial advisers, special needs estate attorneys, special education professionals, governmental and community agencies to maximize benefit and establish the best long-term plan. Leahy Life Plan assists with obtaining state waivers, navigating federal benefits, and building a Disability Life Plan, a holistic person-centered plan for lifelong blending and braiding community and public supports across the lifespan.

MASSMUTUAL SPECIAL CARE

Contact: Jack Kashner
Phone: 860-835-8659
Email: jkashner24@massmutual.com
Web: massmutual.com/specialcare

SpecialCare is a program developed by Massachusetts Mutual Life Insurance Company (MassMutual) that provides access to information and resources to families with dependents who have a disability. Our mission is to help educate families and caregivers about the importance and steps in creating a life care plan to help provide a secure financial future.

SPONSOR

MEDISKED, LLC

Contact: Linda Nakagawa
Phone: 866-633-4753
E-mail: linda_nakagawa@medisked.com
Web: medisked.com

Medisked, LLC is the trusted partner to organizations across the country, providing integrated electronic record systems, care coordination solutions, and business intelligence and reporting tools to improve quality and outcomes in LTSS delivery for state and county oversight, payers, managed care organizations, care coordination entities, and provider agencies.

MINNESOTA DISABILITY DETERMINATION SERVICES (DDS)

Contact: Tanya Heitzinger
phone: 651-259-7835
Email: tanya.heitzinger@ssa.gov
web: ssa.gov

Disability Determination Services (DDS) evaluates claims for disability benefits using Social Security Administration (SSA) guidelines. The mission of DDS is to improve the quality of life for Minnesotans with disabilities who apply for or receive SSA disability benefits, by making timely, consistent and accurate disability determinations.

MSS

Contact: Taylor McLaughlin
Phone: 651-778-1000
Email: tmclaughlin@mwsservices.org
Web: mwsservices.org | etrac-mss.com

MSS offers *eTrac*®, an innovative, online software program and curriculum that teaches job search skills to people working to overcome barriers to employment such as disabilities, gaps in employment history, or mental health challenges.

NADD

Contact: Carly Winnie
Phone: 845-331-4336
Email: cwinnie@thenadd.org
Web: thenadd.org

NADD is a membership association established for professionals, care providers, and families to promote understanding of and services for individuals who have developmental disabilities and mental health needs. The mission of NADD is to advance mental wellness for persons with developmental disabilities through the promotion of excellence in mental health care.

NATIONAL CORE INDICATORS™

Contact: Dorothy Hiersteiner
 Phone: 617-876-0426
 Email: dhiersteiner@hsri.org
 Web: nationalcoreindicators.org

National Core Indicators™ is a voluntary effort by public developmental disabilities agencies to measure and track their own performance. NCI™ uses surveys to assess person-centered, quality of life and service satisfaction.

NATIONAL LEADERSHIP CONSORTIUM ON DEVELOPMENTAL DISABILITIES

Contact: Kristen Loomis
 Phone: 302-831-4728
 Email: kloomis@udel.edu
 Web: nlcdd.org

The *National Leadership Consortium on Developmental Disabilities* at the University of Delaware is a partnership of seventeen national developmental disabilities organizations. The Consortium offers intensive leadership institutes designed to meet specific needs of disability organizations. Its goal is to assure the quality and commitment of the next generations of leaders.

PHARMACY ALTERNATIVES

Contact: Rider Sparrow
 Phone: 502-432-6615
 E-mail: rider.sparrow@palrx.com
 Web: palrx.com

Pharmacy Alternatives is a long-term care pharmacy dedicated to supporting individuals with intellectual disability. Our state-of-the-art approach includes packaging technology specially designed for the population we serve and electronic medication management that helps people live their best life.

QBS, INC

Contact: Patty Pruden-Lennox
 Phone: 508-316-4223
 E-mail: pprudenlennox@qbscompanies.com
 Web: QBScompanies.com

QBS Inc., a leading national consulting and behavioral training company, offers Safety-Care™ Behavioral Safety Training. Safety-Care is founded upon principles and procedures of Applied Behavior Analysis and Positive Behavioral Supports, training staff in evidence-based practices toward the prevention, minimization, and management of behavioral challenges.

REBEL GIRL RESEARCH COMMUNICATIONS

Contact: Nechama Sammet Moring
 phone: 617-717-8598
 Email: rebelgirlresearch@gmail.com
 Web: rgrcommunications.com

Rebel Girl Research (RGR) Communications gets scientists funded and maximizes research's impact through dedicated communications support. From initial grant writing to stakeholder engagement, knowledge translation and dissemination, RGR Communications connects researchers to funders and communities, leveraging science to drive social change.

RESEARCH AND TRAINING CENTER ON COMMUNITY LIVING, UMN

SPONSOR

Contact: Jerry Smith
 Phone: 612-624-4336
 Email: smith495@umn.edu
 Web: rtc.umn.edu

The *Research and Training Center on Community Living (RTC/CL)* provides research, evaluation, training, technical assistance, and dissemination to support the aspirations of persons with intellectual and developmental disabilities to live full, productive, inclusive lives in communities of their choice. RTC/CL is housed within the Institute on Community Integration at the University of Minnesota.

RPF PROPERTIES, INC

SPONSOR

Contact: Chuck Shaver
 Phone: 502-262-0236
 Email: cwshaver@gmail.com
 Web: rfpproperties.com

RFP Properties, Inc — meeting the housing needs of people with specific needs. We work with providers, government, agencies, and downsizing institutions to find a home or group of homes, that's specifically tailored to meet their long-term needs.

SOLANA

Contact: Kelly Burgess
 Phone: 419-330-3436
 Email: Kellly@solanapro.com
 Web: solanapro.com

Solana's core focus is an intelligent and integrated software system, with the sole focus on serving providers that serve people with IDD.

SCIOTO PROPERTIES

Contact: Steve Hendricks
 Phone: 614-889-5191
 Email: shendricks@scioto.com
 Web: scioto.com

Scioto Properties is a national real estate investment company committed to providing long-term residential solutions in the healthcare industry. Since 1999, *Scioto* has been helping provider organizations of all sizes to acquire and manage their real estate needs.

STATION MD

SPONSOR

Contact: Meghan Calichman
 Phone: 908-663-2929
 Email: meghan.calichman@stationmd.com
 Web: stationmd.com

Station MD is a telemedicine company with extensive experience caring for individuals with IDD. We have a proven track record of reducing hospital transfer rates as well as transportation and overtime staffing cost. Whether at home or in a facility, we provide immediate quality care for people with IDD.

THE EVERGREEN CENTER, INC.

Contact: Nicole Atton-Moore
 Phone: 508-478-2631
 Email: naltonmoore@evergreenctr.org
 Web: evergreenctr.org

The Evergreen Center is a residential program in Milford, MA serving children with intellectual disability, autism, physical challenges, and severe maladaptive behavior. Evergreen uses Applied Behavior Analysis as the cornerstone of its instructions. We believe children achieve maximum potential when instructions is woven through daily activities and living environment.

THERAP SERVICES

Contact: Jeff Mau
 Phone: 515-423-3263
 Email: jeff.mau@therapservices.net
 Web: www.therapservices.net

Therap is an online documentation, reporting and communication software platform for providers supporting people with developmental disabilities. *Therap* is used in over 4,000 agencies serving as few as one individual to multi-state providers serving thousands of individuals. Therap modules encompass a wide array of supports for both individuals and staff members, including billing supports.

SILENT AUCTION

A silent auction held during the exhibit time, is hosted by the Local Arrangements Committee. Come and bid on items of your choice! All the proceeds will benefit *People First Wisconsin* and *Advocating Change Together (ACT)*.

Sunday, June 23

5:00 pm – 8:00 pm

Board of Directors Meeting

Presiding: Elizabeth Perkins, PhD, RNLD, FAAIDD, FGSA, President, AAIDD Board of Directors

Monday, June 24

9:00 – 10:00 am

Annual Open Membership Meeting and Leadership Forum

Presiding: Elizabeth Perkins, PhD, RNLD, FAAIDD, FGSA, President, AAIDD Board of Directors

ROOM: GREAT RIVER 1

10:15 – 11:30 am

Joint Meetings of The Assembly of Geographic Interests

Presiding: Len Abbeduto, PhD, FAAIDD Vice President, AAIDD Board of Directors

and The Assembly of Professional Interests

Presiding: Laura Lee McIntyre, PhD, FAAIDD President-Elect, AAIDD Board of Directors

(By invitation only)

ROOM: GOVERNORS 2



Tuesday, June 25

7:30 – 8:30 am

Creative Arts Therapies Interest Network

Presiding: Yumi Shirai, PhD, University of Arizona

ROOM: STATE 2

7:30 – 8:30 am

Communication Disorders Interest Network

Presiding: Angela John Thurman, PhD, University of California, Davis

ROOM: STATE 3

7:30 – 8:30 am

Leadership and Management in Community Living Interest Network

Presiding: Sharon Gomez, FAAIDD, Evergreen Life Services & Joanna Pierson, PhD, FAAIDD, The Arc of Frederick County

Presentation: Practices that Promote Quality Outcomes

Speaker: Amy Hewitt, PhD, FAAIDD, University of Minnesota

ROOM: GOVERNORS 3

7:30 – 8:30 am

Multicultural Concerns Interest Network

Presiding: Ellis "Pat" Craig, PhD, FAAIDD, Consultant

ROOM: GOVERNORS BOARDROOM

7:30 – 8:30 am

Technology Interest Network

Presiding: Emily Shea Tanis, PhD, FAAIDD, University of Colorado

ROOM: GOVERNORS 4

12:15 – 1:45 pm

INTEREST NETWORKS LUNCH MEETINGS

The following groups will meet over lunch.
Ticket required (lunch fee \$20)

Limited number of tickets are available at registration

- Education Interest Network
- Gerontology Interest Network
- Health and Wellness Interest Network
- Legal Process & Advocacy Interest Network
- Religion & Spirituality Interest Network
- Research Interest Network
- Social Work & Families Interest Networks (joint meeting)

ROOM: GREAT RIVER 1

Wednesday, June 26

7:00 – 8:00 am

Direct Support Professionals Interest Network

Presiding: Colleen McLaughlin, MEd, FAAIDD, RWJMS Rutgers

ROOM: STATE 2

7:30 – 8:30 am

International Interest Network

Presiding: Chun-yu (Caya) Chiu, PhD, FAAIDD, National Taiwan Normal University

ROOM: STATE 3

7:00 – 8:00 am

Social and Sexual Concerns Interest Network

Presiding: Rhonda Black, PhD, University of Hawai'i

ROOM: GOVERNORS BOARDROOM

12:00 pm – 1:00 pm

Student and Early Career Professionals Luncheon

Lunch ticket \$15

Come and meet other Student and Early Career Professionals, a great network opportunity!

ROOM: GREAT RIVER 1

12:00 pm – 1:00 pm

Psychology Interest Network Lunch Meeting

Lunch ticket \$20

Open to all members of the Psychology Interest Network

ROOM: STATE 3

6:00 pm

Religion & Spirituality Interest Network Dinner

Offsite event – cost \$40

Open to all, come join us at the Gray Duck Tavern, 345 Wabasha St. N, St. Paul

Thursday, June 27

9:00 am – 12:00 pm

Religion and Spirituality Interest Network Forum

Fee \$30

Open to all members of the Religion & Spirituality Interest Network

ROOM: GOVERNORS 3



Knowledge | Support | Empowerment

BOARD OF DIRECTORS

Elizabeth Perkins, PhD, RNLD, FAAIDD
President

Laura Lee McIntyre, PhD, FAAIDD
President-Elect

Leonard Abbeduto, PhD, FAAIDD
Vice President

Alexandra Bonardi, MS, MHA, FAAIDD
Secretary/Treasurer

Susan Havercamp, PhD, FAAIDD
Immediate Past President

Members-at-Large

Melissa DiSipio, MSA, FAAIDD

Joyce Loudon, PhD

Amie Lulinski, PhD, FAAIDD

Anthony Rodriguez, PhD

Margaret A. Nygren, EdD, FAAIDD
Executive Director & CEO

Journal Editors

Karrie A. Shogren, PhD, FAAIDD

Frank Symons, PhD, FAAIDD

James R. Thompson, PhD, FAAIDD

Michael L. Wehmeyer, PhD, FAAIDD

AAIDD Personnel

Paul D. Aitken, CPA, CGMA

Maria A. Alfaro

Corinne Carpenter Lipsey

Vaileth Hakiza

Ravita Maharaj, PhD

Kathleen McLane

Ajith Mathew

Lindsey Polansky

Laura G. Thorn

Kathy Varner

Michael Winfield, MA

LEADERSHIP OF INTEREST NETWORKS

Communication Disorders

Angie Thurman

Creative Arts Therapies

Yumi Shirui

Direct Support Professionals

Colleen McLaughlin
& Dorothy Hiersteiner

Education

Debbie Taub

Families

Kara Ayers

Gerontology

Lieke van Heumen & Jane Lurquin

Health & Wellness

Carrie Coffield, Melissa Desroches,
& Kruti Acharya

International

Caya Chiu, Chun eun Lee,
& Mayumi Hagiwara

Leadership and Management in Community Living

Sharon Gomez, Hilda Trahan,
& Joanna Pierson

Legal Process & Advocacy

Barbara Kleist

Multicultural Concerns

Ellis “Pat” Craig

Psychology

Vincent Chesney

Religion & Spirituality

David Morstad

Research

Jennifer Jones & James Lemanowicz

Sexual & Social Concerns

Kim Spense & Rhonda Black

Social Work

Mark McManus

Student & Early Career Professionals

Sheida Raley, Mayumi Hagiwara,
& Heather Williamson

Technology

Emily Shea Tanis, Kim Wolowiec-Fisher,
& Jordan Jankus

LEADERSHIP OF CHAPTERS AND REGIONS

Connecticut

Mary Etter

Georgia

Curt Harrison

Kansas

Evan Dean

Louisiana

Lynda Theils

Michigan

Jillian Trumbull

Missouri

Kyla Mundwiller

New Jersey

Sid Blanchard

South Carolina

Renee Staggs

Texas

Ellis “Pat” Craig

Wisconsin

Julie Grieves

Region 6

Justin Kuehl

Don Anderson

Region X

Nicole Cadovious



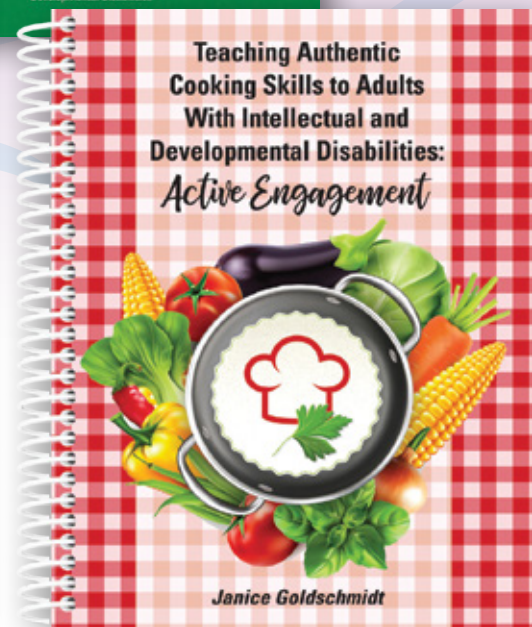
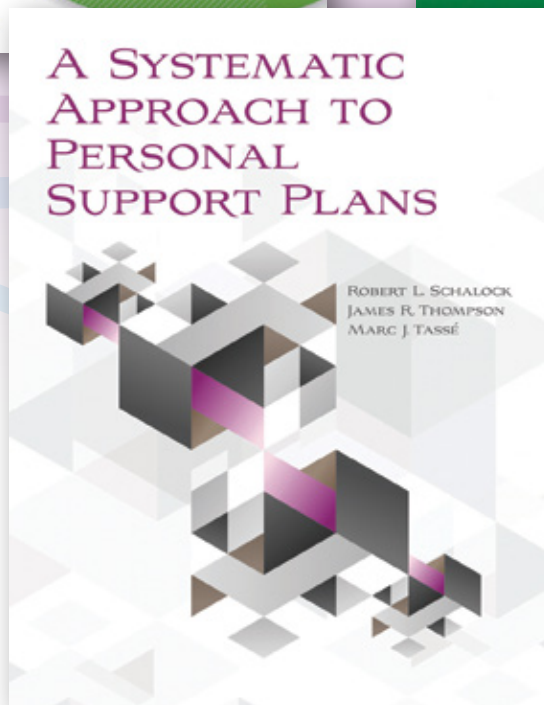
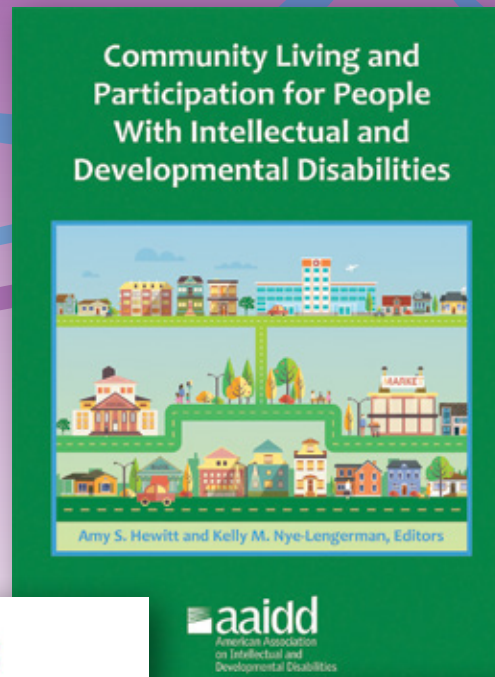
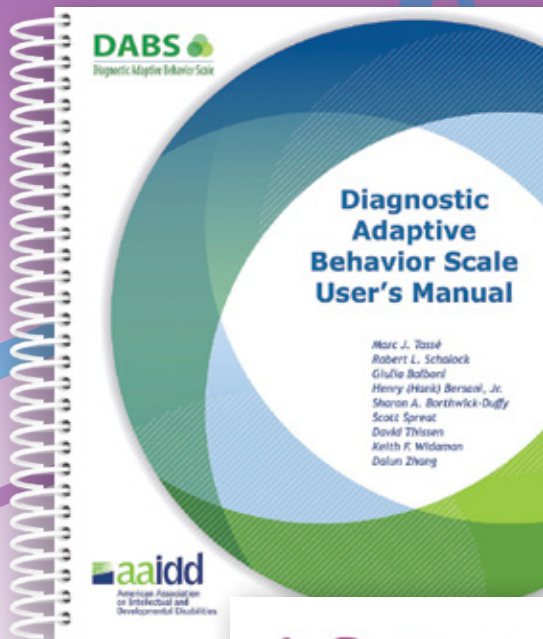
PAST PRESIDENTS

The history of the AAIDD is long and distinguished.
Our tradition, professional standing, and leadership in the area of intellectual and developmental disabilities are exemplified in the persons of our Presidents.

1876–1877	Edouard Sequin, MD	1924–1925	Groves B. Smith, MD	1971–1972	Robert L. Erdman, EdD
1877–1878	Hervey B. Wilbur, MD	1925–1926	Arthur R.T. Wylie, MD	1972–1973	Michael J. Begab, PhD
1878–1879	G.A. Doren, MD	1926–1927	Benjamin W. Baker, MD	1973–1974	David Rosen, MS
1879–1880	H.M. Knight, MD	1927–1928	Edward R. Johnstone	1974–1975	James D. Clements, MD
1880–1881	Charles T. Wilbur, MD	1928–1929	George E. McPherson, MD	1975–1976	Sue Allen Warren, PhD
1881–1882	George W. Brown, MD	1929–1930	George L. Wallace, MD	1976–1977	Burton Blatt, EdD
1882–1884	J.Q.A. Stewart, MD	1930–1931	H.H. Ramsey, MD	1977–1978	Margaret J. Giannini, MD
1884–1885	A.H. Beaton, MD	1931–1932	Harvey M. Watkins, MD	1978–1979	Richard C. Scheerenberger, PhD
1885–1886	F.M. Powell, MD	1932–1933	Howard W. Potter, MD	1979–1980	Marjorie H. Kirkland, MSSW
1886–1887	William B. Fish, MD	1933–1934	Ransom A. Greene, MD	1980–1981	H. Carl Hayward, PhD
1887–1888	George H. Knight, MD	1934–1935	Mary M. Wolfe, MD	1981–1982	Frank A. Borreca, EdD
1888–1889	J.C. Carson, MD	1935–1936	Edgar A. Doll, PhD	1982–1983	A. Gail O'Connor, PhD
1889–1890	A.C. Rogers, MD	1936–1937	Benjamin O. Whitten, MD	1983–1984	Herbert J. Grossman, MD
1890–1891	J.T. Armstrong, MD	1937–1938	Harry C. Storrs, MD	1984–1985	B.R. (Bill) Walker, PhD
1891–1892	Isaac N. Kerlin, MD	1938–1939	Neil A. Dayton, MD	1985–1986	H. Rutherford Turnbull III, LLB, LLM
1892–1893	Walter E. Fernald, MD	1939–1940	Frederick Kuhlmann, PhD	1986–1987	Harold Michal-Smith, PhD
1893–1894	A.E. Osborne, MD	1940–1941	Meta L. Anderson, PhD	1987–1988	Valaida S. Walker, EdD
1894–1895	A.W. Wilmarth, MD	1941–1942	Fred O. Butler, MD	1988–1989	Robert G. Griffith, EdD
1895–1896	Samuel J. Fort, MD	1942–1943	Horatio M. Pollock, PhD	1989–1990	James W. Ellis, JD
1896–1897	Martin W. Barr, MD	1943–1944	C. Stanley Raymond, MD	1990–1991	Robert R. Bruininks, PhD
1897–1898	George A. Brown, MD	1944–1945	E. Arthur Whitney, MD	1991–1992	Jack A. Stark, PhD
1898–1899	Mary J. Dunlap, MD	1945–1946	Mabel A. Matthews	1992–1993	Michael R. Dillon, EdD
1899–1900	Alexander Johnson	1946–1947	Warren G. Murray, MD	1993–1994	David L. Braddock, PhD
1900–1901	W.A. Polglase, MD	1947–1948	Lloyd N. Yepsen, PhD	1994–1995	Karen L. Middendorf
1901–1902	F.W. Keating, MD	1948–1949	Edward J. Humphreys, MD	1995–1996	William E. Kiernan, PhD
1902–1903	J.M. Murdoch, MD	1949–1950	Mildred Thomson	1996–1997	Pamela C. Baker, PhD
1903–1904	Edward R. Johnstone	1950–1951	Richard H. Hungerford	1997–1998	Robert L. Schalock, PhD
1904–1905	A.H. Beaton, MD	1951–1952	Edward J. Engberg, MD	1998–1999	Stanley S. Herr, J.D., DPhil
1905–1906	George Mogridge, MD	1952–1953	Bertha M. Luckey, PhD	1999–2000	Bernard R. Wagner, PhD
1906–1907	W.H.C. Smith, MD	1953–1954	Arthur T. Hopwood, MD	2000–2001	Cathy Ficker Terrill, MS
1907–1908	Charles Bernstein, MD	1954–1955	Gale H. Walker, MD	2001–2002	Steven F. Warren, PhD
1908–1909	W.N. Bullard, MD	1955–1956	Arthur E. Westwell, DMD	2002–2003	Ruth A. Luckasson, JD
1909–1910	Miss Mattie Gundry	1956–1957	Thomas L. McCulloch, PhD	2003–2004	Ann P. Turnbull, EdD
1910–1911	Arthur R.T. Wylie, MD	1957–1958	Chris J. DeProspero, EdD	2004–2005	David L. Coulter, MD
1911–1912	H.G. Hardt, MD	1958–1959	George Tarjan, MD	2005–2006	Valerie J. Bradley, MA
1912–1913	Allan E. Carrol, MD	1959–1960	Frances M. Coakley	2006–2007	Henry "Hank" Bersani, Jr, PhD
1913–1914	J.K. Kutnewsky, MD	1960–1961	Edward L. Johnstone	2007–2008	David A. Rotholz, PhD
1914–1915	H.H. Goddard, PhD	1961–1962	Herschel W. Nisonger	2008–2009	Steven M. Eidelman, MSW
1915–1916	Charles Bernstein, MD	1962–1963	William Sloan, PhD	2009–2010	Joanna L. Pierson, PhD
1916–1917	E.J. Emerick, MD	1963–1964	George L. Wadsworth, MD	2010–2011	Michael L. Wehmeyer, PhD
1917–1918	George L. Wallace, MD	1964–1965	Harvey A. Stevens	2011–2012	Sharon C. Gomez
1918–1919	Charles S. Little, MD	1965–1966	I. Ignacy Goldberg, EdD	2012–2013	Marc J. Tassé, PhD
1919–1920	George S. Bliss, MD	1966–1967	Marguerite J. Hastings	2013–2014	James R. Thompson, PhD
1920–1921	H.A. Haynes, MD	1967–1968	Harvey F. Dingman, PhD	2014–2015	Amy S. Hewitt, PhD
1921–1922	Joseph H. Ladd, MD	1968–1969	Richard Koch, MD	2015–2016	Susan B. Palmer, PhD
1922–1923	C. Banks McNairy, MD	1969–1970	Wesley D. White, EdD	2016–2017	William Gaventa, MDiv
1923–1924	Walter E. Fernald, MD	1970–1971	Horace Mann, PhD	2017–2018	Susan M. Havercamp, PhD

AAIDD Publications

Come by the AAIDD exhibit and see our new and best-selling books!



American Association
on Intellectual and
Developmental Disabilities