
AAIDD 146th Annual Meeting

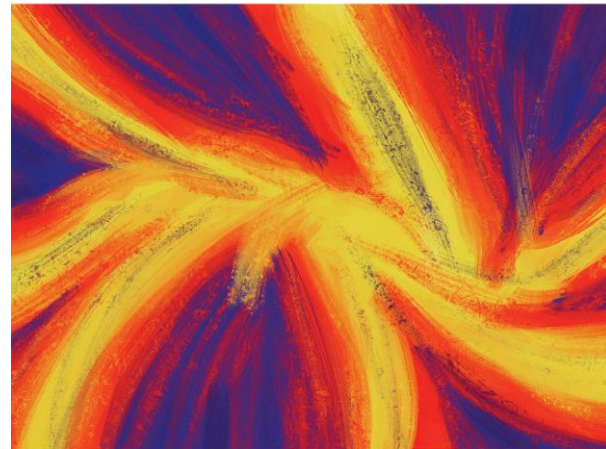
Virtual Program

Please note: All times listed are in Eastern Daylight Time (UTC-4:00)

June 27-29, 2022

(Updated April 28, 2022)

Dismantling Systemic Barriers:
**Reenvisioning Equity
and Inclusion**



AAIDD 146th Annual Meeting
June 13-16, 2022
Jacksonville, Florida

Rebirth and Reformation, 2021
Austin Myers
Digital Art

PLENARY SESSIONS

Presidential Address:

Dismantling Systemic Barriers: Reenvisioning Equity and Inclusion



Karrie Shogren, PhD, FAAIDD
Professor and Senior Scientist, University of Kansas
Director, Kansas University Center on Developmental Disabilities

On-Demand

Reenvisioning Equity and Inclusion: Scholarship, Policy, and Practice



Subini Annamma, PhD
Associate Professor, Stanford Graduate School of Education

On-Demand



Rebecca Cokley
Program Officer, U.S. Disability Rights, Ford Foundation



Finn Gardiner, MPP
Communications Specialist, Brandeis University

Plenary Session continued...

Reenvisioning the Right to Science: Equity in Outcomes and Processes

On-Demand



Khalilah Robinson Johnson, PhD
University of North Carolina School of Medicine



Anjali Forber-Pratt, PhD, US HHS
Administration on Community Living



Brad Linnenkamp
University of Kansas

Wednesday, June 15

Awards Ceremony

12:30 pm

Live

This event will be transmitted live via YouTube!

PRE-CONFERENCE SESSION:

**“Dismantling Systemic Barriers:
Reenvisioning Equity and Inclusion”** from
an international perspective.

Mayumi Hagiwara, PhD, San Francisco State University
Chung Eun Lee, PhD, Chonnam National University

Date: June 27, 2022

Live

Time: 11:00 am (Eastern Time)

Purpose:

The pre-conference session provides AAIDD international scholars and those interested in international research with an opportunity to share and discuss new and innovative research, policy, and practice to dismantle systematic barriers to promote equity and inclusion across the globe.

SECP Virtual Networking Reception

Live

Tuesday, June 28

6:30 pm

JUNE 27, 2022

12:00 pm – 1:00 pm Concurrent Block 1

Session 1A	Session 1B	Session 1C
<p>ISSUE BRIEF-Cultural Responsiveness</p> <p>Designing Interventions with Three Cs: Collaboration, Contextual Fit, Cultural Responsiveness Susan Copeland, PhD, FAAIDD, University of New Mexico</p> <p>Issues in Equity for Culturally and Linguistically Diverse Students with Complex Support Needs Rosalia Pacheco, MA, University of New Mexico Julia Scherba de Valenzuela, PhD, University of New Mexico</p> <p>Cultural Adaptation Checklist: A Novel Guide and Quality Appraisal Tool for Intervention Adaptation Michelle Sands, PhD, University of Wisconsin-Oshkosh James Lee, PhD, University of Kansas Hedda Meadan, PhD, University of Illinois at Urbana-Champaign Martin Melanie, University of Illinois at Urbana-Champaign Kaori Terol, EdM, University of Illinois at Urbana-Champaign Christy Yoon, MA, University of Illinois at Urbana-Champaign</p> <p>Socially-Inclusive Community Participation: Community Groups and Religious Services Roger Stancliffe, PhD, FAAIDD, University of Minnesota Sandra Pettingell, PhD, University of Minnesota James Houseworth, PhD, University of Minnesota Renáta Tichá, PhD, University of Minnesota</p> <p>Reconceptualization of Social Inclusion and Wellbeing of Syrian Refugees with Disabilities in Turkey Hatice Uyanik, MA, University of Kansas Ali Kaya, PhD, Nevşehir Hacı Bektaş Veli University</p>	<p>Skills for Success in Postsecondary Ed and Employment</p> <p>The "State" of Legislation and Collaboration in Inclusive Postsecondary Education Julia Snider, PhD, Grand Valley State University Kimberly Patton, PhD, Illinois State University Shari Hopkins, PhD, Western Oregon University</p> <p>What ELSE About This Job: Teaching Employment Skills to Young Adults with IDD Through a Mnemonic Ayse Torres, PhD, Florida Atlantic University, Kelly Kearney, PhD, Florida Atlantic University</p>	<p>Reenvisioning Public Health Data and Policy</p> <p>The Federal Road Map for Data That Advances Health Equity for The Population with IDD Jennifer Johnson, PhD, US HHS Administration on Community Living Alexandra Bonardi, MS, MPA, FAAIDD, Human Services Research Institute, Gloria Krahn, PhD, Oregon State University</p> <p>When it Comes to Health Data, Start With “Why?” Katherine Cargill-Willis, US HHS Administration on Community Living Meredith Raymond, MSW, US HHS Administration on Community Living Gloria Krahn, PhD, Oregon State University</p> <p>A Multi-Faceted Data Strategy to Inform Policy: Three Projects Demonstrating Facets of Health Data for People with ID/DD Julie Weeks, PhD, CDC National Center for Health Statistics Alexandra Bonardi, MS, MPA, FAAIDD, Human Services Research Institute Susan Haverkamp, PhD, FAAIDD, The Ohio State University</p>

Session 2A	Session 2B	Session 2C
<p>POSTER SYMPOSIA- Co-Research & Training</p> <p>Research during public health emergencies: Tools to prepare stakeholders with IDD Jessica Kramer, PhD, FAAIDD, University of Florida Beth Pfeiffer, PhD, Temple University Taye Hallock, Temple University Luke Tomczuk, Temple University</p> <p>All About us with us: An Action Research on a Self-advocacy Group Si-Fang Lin, National Taiwan Normal University Chun-YuChiu, PhD, National Taiwan Normal University Hui-Fang Lin, MSoc, Parents' Association for Persons with Intellectual Disabilities Weng Ya-Ning, MSoc, Parents' Association for Persons with Intellectual Disabilities</p> <p>Centering Self-Advocates: Adults with Intellectual and Developmental Disabilities as Trainers Leah Katherine Saal, PhD, Loyola University Maryland Lisa Schoenbrodt, EdD, Loyola University Maryland</p> <p>Promoting the Inclusion of IDD Voices in Narrative Research by Creating Comics Eric Sarrett, MSOT, MPhil, MA, University of St. Augustine for Health Sciences</p> <p>The Development of a Curriculum to Train Special Olympics Athletes to be Co-Researchers Lieke van Heumen, PhD, University of Illinois at Chicago Iulia Mihaila, PhD, Special Olympics Inc. Courtney Krueger, Special Olympics Inc.</p>	<p>Culturally Responsive Parent Supports</p> <p>The Cultural Adaptation of a Parent Training to Improve Service Access for Latinx Youth with Autism Janeth Aleman-Tovar, MA, University of Illinois at Urbana-Champaign Meghan Burke, PhD, FAAIDD, University of Illinois at Urbana-Champaign Edwin Monarrez, MA, University of Illinois at Urbana-Champaign</p> <p>Pilot Trial of “Parents Taking Action” for Caregivers of Black Children At-Risk for Autism Sarah Dababnah, PhD, MPH, MSW, University of Maryland Baltimore Charina Reyes, MD, University of Maryland Baltimore Irang Kim, PhD, MSW, Tulane University Yoonzie Chung, MSW, University of Maryland Baltimore Yan Zhu, University of Maryland Baltimore Deborah, Badawi, MD, University of Maryland Baltimore Wendy Shaia, EdD, MSW, University of Maryland Baltimore Sandy Magaña, PhD, MSW, University of Texas at Austin</p>	<p>Introducing Good Blood Bad Blood, 2nd Ed</p> <p>Michael Wehmeyer, PhD, FAAIDD, University of Kansas Edward Polloway, PhD, FAAIDD, University of Lynchburg</p>

Session 3A	Session 3B	Session 3C
<p>ISSUE BRIEF-Family</p> <p>Connecting Locally: The role of Adult Siblings in Supporting the Social Inclusion in Neighborhoods Geraldine Boland, PhD, University College Dublin Suzanne Guerin, PhD, University College Dublin</p> <p>Family Support and Disability Policies: Perspectives of Siblings of People with IDD Chung Eun Lee, PhD, Chonnam National University Mayumi Hagiwara, PhD, San Francisco State University</p> <p>Exploratory Study to Measure Family Quality of Life for Adults with Intellectual Disability in India Pardip, MEd, University of Delhi</p> <p>Letter of Intent Kelly Piacenti, MA, MassMutual SpecialCare</p> <p>Formal Support: Experience of Parents Raising Children with Severe Intellectual Disability Yael Karni-Visel, PhD, Bar Ilan University Kareem Nasser, PhD, Sacre-Coeur School Hofit Manishevitz, MSW, Tel Aviv University Akrt Sahar, MSW, Mitchell Schertz, MD, Child Development and Pediatric Neurology Service</p>	<p>Transforming Faith Community Access and Participation</p> <p>From Absence to Participation to Inclusion to Belonging William C. Gaventa, MDiv, FAAIDD, Consultant David Morstad, MEd, FAAIDD, Consultant</p> <p>Simple Spiritual Assessments for Agencies: Assessing & Addressing Spiritual Needs of Adults with IDD Within and Beyond Faith Communities Amy Petré Hill, JD, MDiv, First Plymouth Congregational Church United Church of Christ & Mental Health & Inclusion Ministries</p> <p>Two Case Studies in Faith/Agency Inclusion: (1) Translating Good Intentions into Lived Experiences and (2) Transportation to Belonging Deborah M. Fisher, PsyD, FAAIDD, Consultant Sarah McKenny, MDiv, Stone Belt Arc</p>	<p>Evaluating Adaptive Behavior with the DABS</p> <p>Cut-off Point for Significant Limitations in Adaptive Behavior: DABS Informativeness and Accuracy Pasquale Anselmi, PhD, Università degli Studi di Padova Alice Bacherini, MA, Università degli Studi di Perugia Giulia Balboni, PhD, FAAIDD, Università degli Studi di Perugia Egidio Robusto, PhD, Università degli Studi di Padova</p> <p>Dismantling the Barrier of Intellectual Disability Diagnosis: Portuguese Version of DABS Nelson Afonso, MA, Universidade de Lisboa Sofia Chagas, MA, Universidade de Lisboa Sofia Santos, PhD, Universidade de Lisboa</p>

Session 4A	Session 4B	Session 4C
<p>POSTER SYMPOSIA- K-12 Education</p> <p>Understanding the Special Education Teachers’ Perceptions toward Student Self-Determination in Japan Mayumi Hagiwara, PhD, San Francisco State University Kazuaki Maebara, Akita University Asuka Fujii-Yamaguchi, Takamatsu University Yasuhito Doi, Nagareyama School of Special Need Education Jun Yaeda, University of Tsukuba</p> <p>Equity and Effective Inclusion of Students with Intellectual Disability Diana Lawrence-Brown, PhD, St. Bonaventure University</p> <p>Reading Instruction for Elementary Students with IDD: Teacher Knowledge, Perceptions, and Priorities Esther Lindstrom, PhD, Lehigh University</p> <p>Paraprofessional-Delivered Interventions in Inclusive School Settings for Students with ESN Virginia Walker, PhD, University of North Carolina at Charlotte Jennifer Kurth, PhD, University of Kansas Megan E. Carpenter, PhD, University of Kansas Melissa Tapp, MEd, University of North Carolina at Charlotte Amy Clausen, MEd, University of North Carolina at Charlotte Elissa Lockman Turner, MEd, University of North Carolina at Charlotte</p>	<p>Transforming Participation in Research</p> <p>Allyship and Anti-Ableism: A Call-in for Equity and Inclusion in Intellectual Disability Research Katherine E. McDonald, PhD, Syracuse University Ariel Schwartz, PhD, MGH Institute of Health Professions Micah Fialka Feldman, Syracuse University Tia Nelis, TASH Dora M. Raymaker, PhD, Portland State University</p> <p>Representation of Adults with Intellectual Disability in Health Intervention Research: A Review of Inclusion/Exclusion Criteria in NIH-Funded Clinical Trials Ariel Schwartz, PhD, MGH Institute of Health Professions Katherine E. McDonald, PhD, Syracuse University Maya Sabetello, LLB, PhD, Columbia University</p> <p>Opening the Door to University Health Research: Increasing Accessibility for Individuals with Intellectual Disability Brittany St. John, MS, University of Wisconsin-Madison Allison Doerpinghaus, OTD, University of Wisconsin-Madison Libby Hladik, MS, University of Wisconsin-Madison Edward Kastern, University of Wisconsin-Madison Chad Russell, University of Wisconsin-Madison Tina Russell, University of Wisconsin-Madison Ashley Mathy, University of Wisconsin-Madison Brogan Peterson, University of Wisconsin-Madison Don Wingington, MS, University of Wisconsin-Madison Emily Hickey, PhD, University of Wisconsin-Madison Karla Ausderau, PhD, University of Wisconsin-Madison</p>	<p>Social Skills and Social Outcomes</p> <p>Social-Emotional Skills Training Through Computer-Assisted Instruction for Young Adults with ID Kelly Kelley, PhD, Western Carolina University Kelly Clark, PhD, Appalachian State University Kelsey Hurry, MS, East Tennessee State University</p> <p>Empathy and Social Outcomes for Individuals with Intellectual and Developmental Disabilities Cynde Josol, Michigan State University Marisa H. Fisher, PhD, Michigan State University</p>

JUNE 28, 2022

2:00 – 3:00 pm Concurrent Block 5

Session 5A	Session 5B	Session 5C
<p>ISSUE BRIEF- Health</p> <p>The Role of Nutrition in the IDD Public Health Crisis Janice Goldschmidt, MPH, MS, Community Support Services, Inc.</p> <p>Hospital Visitation Policies for People with IDD Amid the Pandemic Jacqueline McGinley, PhD, MSW, Binghamton University Christina Marsack-Topolewski, PhD, MSW, Eastern Michigan University</p> <p>Mental Health, Behavioral Support Needs, and Personal Outcomes for Adults with IDD Sarah Lineberry, MSW, Virginia Commonwealth University Parthenia Dinora, PhD, Virginia Commonwealth University Matthew Bogenschutz, PhD, Virginia Commonwealth University Prohn Seb, PhD, Virginia Commonwealth University Michael Broda, PhD, Virginia Commonwealth University</p> <p>Healthy Relationships Class Evaluation for Special Olympics Athletes with Intellectual Disability Iulia Mihaila, PhD, University of Illinois at Chicago Jamie Valis, PhD, Special Olympics Inc. Heather Harmer, Special Olympics Inc. Onolee Stephan, MPH, Special Olympics Inc. Alicia Bazzano, MD, PhD, MPH, Special Olympics Inc.</p> <p>Promoting Inclusive Health Care to Adults with Intellectual and Developmental Disabilities Heather J. Williamson, DrPH, FAAIDD, Northern Arizona University Julie S. Armin, PhD, University of Arizona Michele S. Lee, MA, Northern Arizona University Monica Diaz, University of Arizona Tamsen L. Bassford, MD, University of Arizona</p>	<p>Equity in Research</p> <p>Intentional Representation: Supporting Voices of People with IDD in Data, Stephanie Giordano, DLP, Human Services Research Institute Lenora Heckel, University of South Dakota</p> <p>Family Support Research: Centering People with IDD Katie Arnold, MS, FAAIDD, University of Illinois at Chicago</p>	<p>The Far-reaching and Long-lasting Impact of the 1992 Edition of the AAIDD Manual</p> <p>Ruth Luckasson, JD, FAAIDD, University of New Mexico</p> <p>Robert L. Schalock, PhD, FAAIDD, Schalock & Associates</p>

JUNE 28, 2022

4:00 – 5:00 pm Concurrent Block 6

Session 6A	Session 6B	Session 6C
<p>POSTER SYMPOSIA- Employment</p> <p>Retirement: Experiences and Perspectives of Adults with IDD Lynda Lahti Anderson, PhD, MPH, University of Minnesota Sarah Hall, PhD, FAAIDD, University of Minnesota Julie Kramme, MA, University of Minnesota Roger Stancliffe, PhD, FAAIDD, University of Minnesota</p> <p>Unraveling Adult Services for More Meaningful Employment and Community Living Kelly Kelley, PhD, Western Carolina University Alexandra Raxter Mathis, MAEd, Western Carolina University Kyle Douglas, Western Carolina University</p> <p>Narratives of French Quebecer Autistic Adults on Social Inclusion and Employment Ioulia Koniou, Université de Montréal Isabelle Courcy, PhD, Université du Québec à Montréal</p> <p>Novel Technology Skill-Building Training for Adults with Intellectual and Developmental Disabilities Hailee Riddle, Northern Arizona University Cynthia Sloan, Northern Arizona University Heather J. Williamson, DrPH, FAAIDD, Northern Arizona University Jon Meyers, The Arc of Arizona Russell R. Randall, MEd, Flagstaff Unified School District Cameron Dogan, Daivergent Byran Dai, MS, Daivergent</p>	<p>Abuse Prevention and Healing from Sexual Abuse</p> <p>Healing Connections: The Role of Peer Leaders Supporting Sexual Assault Survivors with Intellectual Disability Jaime Suvak, MS, University of Massachusetts Boston Dimity Peter, PhD, University of Massachusetts Boston</p> <p>Fostering Healthy Relationships and Abuse Prevention through LEAP Parthenia Dinora, PhD, Virginia Commonwealth University Molly Dellinger-Wray, MS, Virginia Commonwealth University</p>	<p>Family Future Planning and Outcomes</p> <p>Handing over the Baton: Perspectives of Future Planning from Families of Individuals with Intellectual and Developmental Disabilities Chun-Yu, Chiu, PhD, FAAIDD, National Taiwan Normal University Yi-Hsuan Liu, National Taiwan Normal University</p> <p>Securing the Future: Research-Based Strategies to Improve Future Financial Planning Cory Gilden, PhD, National Leadership Consortium on Developmental Disabilities Caitlin Bailey, PhD, National Leadership Consortium on Developmental Disabilities</p>

JUNE 29, 2022

12:00 – 1:00 pm Concurrent Block 7

Session 7A	Session 7B	Session 7C
<p>ISSUE BRIEF- Supported Decision Making</p> <p>Psychotherapy and Self-Determination: Implications for Persons with IDD Richard Chapman, PhD, University of Kansas Jessica Schuttler, PhD, University of Kansas Medical Center</p> <p>Making An Accessible Informed Consent Protocol for Adults with IDD Allison D'Aguilar, PhD, Virginia Commonwealth University</p> <p>Deciding My Future: Experiences of Adults with IDD and Family Members using Supported Decision Making Evan Dean, PhD, FAAIDD, University of Kansas Brad Linnenkamp, University of Kansas Mayumi Hagiwara, PhD, San Francisco State University</p> <p>Elevating Self-Advocate Voices to Raise Awareness of COVID-19 and COVID-19 Vaccine Brad Linnenkamp, University of Kansas Evan Dean, PhD, FAAIDD, University of Kansas Sheida K. Raley, PhD, University of Kansas</p>	<p>Mental Health and Employment Outcomes</p> <p>Anticipating the Outcomes: Deciding Whether or not to Disclose a Mental Health Condition at Work Ariel Schwartz, PhD, MGH Institute of Health Professions E. Sally Rogers, ScD, Boston University</p> <p>Special Interest Areas of Adults with Autism with a Focus on Employment and Mental Health Outcomes Leslie Bross, PhD, University of North Carolina at Charlotte Mayumi Hagiwara, PhD, San Francisco State University Jonathan Huffman, PhD, University of Florida</p>	<p>Self Determination and Education Outcomes</p> <p>Using the Goal-Setting Challenge App to Promote Goal Attainment and Self-Determination in High School Karrie Shogren, PhD, FAAIDD, University of Kansas Sheida K. Raley, PhD, University of Kansas Valerie Mazzotti, PhD, University of North Carolina at Charlotte Rebecca Townsend, University of Kansas</p> <p>The Self-Determined Learning Model of Instruction and Peer Supports in Inclusive Classrooms: Examining the Combination of Two Evidence-Based Interventions Sheida K. Raley, PhD, University of Kansas Karrie Shogren, PhD, FAAIDD, University of Kansas Kara Hume, PhD, University of North Carolina Brian Boyd, PhD, University of Kansas Jessica Kiblen, MEd, University of Kansas Jennifer Bumble, PhD, University of Missouri St. Louis</p>

JUNE 29, 2022

2:00 – 3:00 pm Concurrent Block 8

Session 8A	Session 8B	Session 8C
<p>POSTER SYMPOSIA-Support Service Providers</p> <p>Prevalence of Secondary Traumatic Stress Among Direct Support Professionals in IDD Field Daniel Boamah, PhD, MA, Western Kentucky University Anita Barbee, PhD, MSSW, University of Louisville</p> <p>Sexual Development in Individuals with IDD: Perceptions Among Post-Secondary Service Provider Staff James Ingram, PhD, Northern Arizona University Monica Attridge, Hozhoni Foundation Inc. Ashley Root, Northern Arizona University</p> <p>Workforce Stability: Motivation Factors Impacting Satisfaction in the IDD Field Anthony Rodriguez, PhD, FAAIDD, Providence College Elisa Velardo, MMHS, FAAIDD, Connecticut Department of Developmental Disabilities Patricia Cymbala, Connecticut Department of Developmental Disabilities</p> <p>Safety Culture as a Tool for Improvement in Disability Organizations Daniela Viglianco, Centro Educativo Terapeutico Crianza</p> <p>Self-paced Online Training for Paraprofessionals Wenjing Zheng, PhD, Minot State University Holly Pedersen, EdD, Minot State University Roanna Parker, Minot State University</p>	<p>Measures for Literacy and Self Determination</p> <p>Portuguese Self-Determination Inventory: A Content Validity and Reliability Analysis Clarissa Moreira, MSc, Universidade de Lisboa André Oliveira, MSc, Universidade do Minho Armanda Pereira, PhD, Universidade de Trás-os-Montes e Alto Douro Pedro Rosário, PhD, Universidade do Minho Sofia Santos, PhD, Universidade de Lisboa</p> <p>A Review of Early Literacy Measures Administered to Children who use Aided AAC Sara Collins, MS, Florida State University Catherine Timm Fulkerson, MS, Florida State University Andrea Barton-Hulsey, PhD, Florida State University Michelle Therrien, PhD, Florida State University Shirin Khambalia, MS, Florida State University</p>	<p>LGBTQ+ Supports and Quality of Life Outcomes</p> <p>The Experiences and Desired Supports of LGBTQ+ Adults with IDD Oscar Hughes, MEd, Boston University Pauline Bosma, Rainbow Support Groups</p>

JUNE 29, 2022

4:00 – 5:00 pm Concurrent Block 9

Session 9A

Examining Self-Determination in Postsecondary Education

Self-Determination and Inclusive Postsecondary Education for Students with Intellectual Disability: A Review

Kathryn M. Burke, PhD, Temple University

Zachary Baynham, Slippery Rock University

Meghan Blaskowitz, DrPH, MOT, Duquesne University

Ann Marie Licata, PhD, Millersville University

Nick Miller, Temple University

Alia Pustorino-Clevenger, EdD Duquesne University

Xuejing Xu, PhD, Temple University

Ariana Amaya OTD, Gwynedd Mercy University

Person-Centered Planning in Inclusive Postsecondary Education: An Exploratory Study

Kathryn M. Burke, PhD, Temple University

Ann Marie Licata, PhD, Millersville University

Erica Moore, DEd, Lockhaven University

College and Career Learning Experiences: Envisioning Roles and Setting Goals

Kathryn M. Burke, PhD, Temple University