

PROMOTING

# Health



# Wellness



AAIDD 141st Annual Meeting  
June 26-29, 2017 | Hartford, Connecticut





Knowledge | Support | Empowerment

## Welcome to the 2017 AAIDD Annual Meeting in Hartford!

On behalf of the AAIDD Board of Directors and our terrific national staff, I am delighted to welcome you to the 141st Annual Meeting here in Hartford, CT. When our Board met here last fall for a couple of days, many of us who had been to Hartford in the past were surprised and delighted by the vibrancy of the downtown area around the hotel and Convention Center, the river walk, and the creative combination of old and new in both architecture and ambiance. As a clergyman, it is hard for me to resist a metaphorical analogy, this time to note the same combination of "old, established, and respected" with the new life and creativity at the heart of our national Association. Just like our national Association, there is no telling how many different names have been on some of the older buildings in this part of Hartford, but unlike our Association, their core functions might have changed dramatically.



Today our mission is even more vital. We gather together a year after a turbulent election season and six months of a new administration in which challenges of all kinds have forced us to examine, reclaim, and renew our core beliefs in the dignity of every person and commitment to the advances made in our society's support for people with intellectual and developmental disabilities and their families. We have had to realize that progress in these supports is more fragile than we thought a year ago. Hopefully, for you as for me, that has led to a determination to prevent the reversal of progress while at the same time addressing the issues that call for improvement in our services and supports.

Think of the services around Hartford and the country a hundred years ago, services based on a medical, institutional model in an era in which strangers and immigrants were both feared and oppressed. In a year when many of us have been focused on what happens next in healthcare, there could not be a better time to have a conference centered, not around the medical model, but rather the multiple dimensions of health and wellness. Congratulations to our incoming President, Susan Haverkamp, and to all of you who submitted proposals, for organizing such a focused and excellent program that will enable all of us to think about, and learn, what makes us healthy as individuals, support systems, and communities. The issues for people with intellectual and developmental disabilities and their families, in the long run, are not different from the issues for most of us.

We also gather after a year of working hard to improve the services and resources offered by the AAIDD to our membership and to the wider field. Hard work continues to revise and improve major products like the SIS and build new ones. The Professional Interest groups and the Board have worked together to renovate our structures and supports for their work within AAIDD so that they can become even more effective avenues for member involvement, input, and action. Region X has been actively involved in this conference as our hosts. We need and want everyone's input into the discussions at both state and national levels on how we continue to do more than preserve, by revitalizing the "diverse downtown" of our Association in ways that draw upon the strengths and gifts of our most far flung members. Stay alert. Learn. Fight for what's good. Pitch in! And celebrate what we can do together with the people we support and serve and within our communities, wherever those are.

Welcome to the new old Hartford! And the new old AAIDD!

A handwritten signature in black ink that reads "William C. Gaventa, Jr." The signature is written in a cursive, flowing style.

William C. Gaventa, Jr, MDiv, FAAIDD  
President, AAIDD, 2016-2017

## Welcome to Hartford and to the 2017 AAIDD Annual Meeting!

On behalf of the Meeting Planning Committee, the Local Arrangements Committee (Chaired by Elisa Velardo and Michael Bloom), the AAIDD Board of Directors, and the AAIDD national staff, thank you for attending this year's meeting, Promoting Health and Wellness!

It is my pleasure to welcome you. I hope you will engage with the theme of the meeting and focus on self-care and promoting your own health while learning innovative approaches to promoting the health and wellness of people with intellectual and developmental disabilities, their families, and communities of support.



In keeping with the theme of Promoting Health and Wellness, I hope you will enjoy the many health promotion activities offered during the meeting to stretch your mind and body. During the conference program, we will have "brain breaks" activities designed to energize and refocus your attention. Begin the day Wednesday with a time to meet, commune, and reflect with others in the AAIDD community at the Morning Reflection. Finally, I hope you will take advantage of the walking trails along the Connecticut River and join us on the Riverboat Cruise Monday evening!

The AAIDD Board of Directors wants to know what you think! Please stop by the Idea Board, talk with a member of the AAIDD Board of Directors, share your ideas, and enter a prize drawing! We welcome your thoughts on these and other topics: What do you like best about AAIDD? How can AAIDD attract more members? What can make AAIDD better? The Idea Board will host a Fellows Corner where students, early career professionals, and AAIDD fellows can exchange research projects and connect around shared interests.

The meeting program offers an exciting combination of research, innovative practices, and policies that are sure to advance our understanding of the health and well-being of people with disabilities. The opening plenary, presented by Sandra Magaña, Wendy Jones, and Alexandra Bonardi, will challenge us to promote health equity across race, ethnicity, and disability at the practitioner, community, and policy levels. Tim Shriver will present the second plenary, speaking about the importance of friendship and team sports to social and emotional well-being.

I encourage you to explore the conference program and chart your course around 30 concurrent sessions addressing all aspects of health and wellness for children and adults with intellectual and developmental disabilities as well as for the people and communities that support them. One of my favorite conference events is the poster session. Posters provide an opportunity to learn about many different topics by browsing and speaking directly with presenters. This year, we offer Poster Symposia in addition to the traditional poster session. These moderated sessions will showcase research on key topics, with authors presenting a brief presentation and then time to mingle, look at posters, and ask questions.

Monday afternoon's pre-conference sessions featuring cutting-edge programs on building a research trajectory, dignity of risk, aging well with intellectual and developmental disabilities, crucial issues in health care, leveraging managed care to improve social services, and the use of mindfulness and acceptance-based approaches to improve health and wellbeing. The author of *The Boys in the Bunkhouse*, Dan Barry, will be here to read from his book and sign copies later that afternoon. We close on Wednesday with complimentary post-meeting sessions providing guidance on writing for publication from the AAIDD journal editors and using the *Supports Intensity Scale for Person Centered Planning*. CEs for psychologists and social workers are available for pre- and post-meeting sessions!

I hope you enjoy the 2017 AAIDD annual meeting and that you take advantage of the opportunities to connect with people and ideas that intrigue and inspire you. I look forward to meeting many of you in Hartford!

Thank you for being here. Be well!

A handwritten signature in black ink that reads "Susan M. Havercamp". The signature is fluid and cursive, with a long, sweeping tail that extends to the right.

Susan M. Havercamp, PhD, FAIDD  
President-Elect and Meeting Chair, AAIDD, 2016-2017

# Welcome to Hartford!

## Planning Committee Members

Susan Havercamp, Chair  
Val Bradley  
Michael Bloom  
Bill Gaventa  
Sharon Gomez  
Charon Johnson  
Yona Lunsky  
Rose Nevill  
Susan Palmer  
Liz Perkins  
Anthony Rodriguez  
Haleigh Scott  
Elisa Velardo

## Hartford Local Arrangements Committee

Michael Bloom, Co-Chair  
Elisa Velardo, Co-Chair  
Anthony Rodriguez  
Nicole Cadovius  
Don Miller  
Barbara Mazzella  
Susan Percy  
Terri Leibfried  
Chris Nazdelbach  
Ashley Blain  
Chet Fisher  
Peg Gould  
Cheryl Sartoni



Hartford is among the oldest cities in the United States: various Native American tribes associated with the Algonquin confederation first lived in or around present-day Hartford. The first Europeans known to have explored the area were Dutch fur traders who built a trading post in 1623. The first English settlers arrived in 1635 and renamed it Hartford in 1637 to honor the English home town of one of the settlers.

Hartford is home to the nation's oldest continuously published newspaper (*The Hartford Courant*); in 1764, a humble Virginia farmer by the name of George Washington placed an ad in it for some land to rent on his Mount Vernon estate! Hartford is also home to the nation's oldest public art museum (the Wadsworth Atheneum) and the oldest publicly funded park (Bushnell Park).

During the early 19th century, the Hartford area was a center of abolitionist activity. The Reverend Lyman Beecher was known for his anti-slavery sermons. Among his children were Harriet Beecher Stowe, who wrote *Uncle Tom's Cabin*; Reverend Henry Ward Beecher, an abolitionist who also supported the temperance movement and women's suffrage; and Isabella Beecher Hooker, who was a leading member of the women's rights movement. Mark Twain lived in Hartford for 17 years, during which he wrote many of his most known works, including *Adventures of Tom Sawyer*, *Adventures of Huckleberry Finn*, and *A Connecticut Yankee in King Arthur's Court*. Also in the 19th century, Hartford industrialist and inventor Samuel Colt received a patent for his revolver and established what soon became a major manufacturing company.

Today, Hartford is known as the "Insurance Capital of the World," as the city houses many insurance company headquarters; however, Hartford also boasts an award winning Connecticut Convention Center, which opened in 2005, and a new minor league baseball team, the Hartford Yard Goats, who began their first season in 2017.



## Registration Schedule

Monday..... 8:00 am – 5:30 pm  
 Tuesday..... 7:00 am – 5:00 pm  
 Wednesday ..... 7:00 am – 3:00 pm  
 Thursday ..... 8:00 am – 10:00 am

Registration is located Level 6 of the Convention Center

## Exhibit Schedule

### Exhibit Hours

Tuesday, June 27 from 7:30 am – 4:00 pm  
 Wednesday, June 28 from 7:30 am – 11:00 am

### Exclusive Exhibit time:

Wednesday from 8:45 am – 9:15 pm

**LOCATION: BALLROOM FOYER**

## CONTENTS

Annual Meeting Sponsors.....	6
Social Events.....	7
Student and Early Career Professional Events.....	8
Hotel Floor Plan.....	9
Continuing Education Offerings.....	10
Program-at-a-Glance.....	11
Program Highlights.....	12
Annual Membership Meeting and Leadership Forum.....	12
Pre-Conference Sessions.....	12
Plenary Sessions.....	15, 25, 29
Concurrent Sessions.....	16, 18, 21, 25, 27
Post Conference Sessions.....	29
General Information.....	34
Poster Presentations.....	37
Exhibits and Posters Floor Plan.....	52
Guide to Exhibitors.....	53
Interest Networks Business Meetings.....	57
2016–2017 AAIDD Leadership.....	58



## AAIDD Open Annual Membership Meeting Forum

Monday, June 26 | 9:00 – 10:00 am

AAIDD members are encouraged to attend the annual membership forum to learn more about the past year's accomplishments and future initiatives of the association.

**ROOM: 27**



# Thank you to our generous conference sponsors

**Benchmark Human Services**

[www.benchmarkhs.com](http://www.benchmarkhs.com)



**Ruby Electronic**

[www.rubyelectronicdocs.com](http://www.rubyelectronicdocs.com)



**RUBY ELECTRONIC DOCS**

**IASSID**

[www.iassidd.org](http://www.iassidd.org)



International Association for  
the Scientific Study of Intellectual  
and Developmental Disabilities

**UCONN UCEDD**

[www.uconnucedd.org](http://www.uconnucedd.org)



**Cerner Corporation**

[www.cerner.com](http://www.cerner.com)



**Philadelphia Coordinated**

**Health Care**

[www.pchc.org](http://www.pchc.org)



**Coleman Institute on Cognitive Disabilities**

[www.colemaninstitute.org](http://www.colemaninstitute.org)



**CARF International**

[www.carf.org](http://www.carf.org)



**OSU-Nisonger Center**

[www.nisonger.osu.edu](http://www.nisonger.osu.edu)



**The ARC**

[www.thearc.org](http://www.thearc.org)



**The MENTOR Network**

[www.thementornetwork.com](http://www.thementornetwork.com)



Sunday, June 25

8:00 – 9:00 pm

**President's Reception**

*Open to all conference attendees at no additional cost.*

William C. Gaventa, MDiv, FAAIDD, President of the AAIDD Board of Directors, invites all attendees to join the Board at this informal reception.

**ROOM: CITYSIDE FOYER & LOUNGE**

Monday, June 26

6:30 – 7:30 pm

**Hartford Waterfront Cruise Tour**

*(additional fee required \$20)*

Location: Meet at 6:00 pm on Level 3 of the convention center (5–7 minute walk to the embarking area)

Tuesday, June 27

5:00 – 7:00 pm

**Poster Presentations and Reception**

*Open to all conference attendees at no additional cost.*

Explore emerging research, practice, and policy at the Poster Presentations and Reception.

**ROOM: BALLROOM B**

7:00 – 8:30 pm

**Publications Reception**

*Open to all conference attendees at no additional cost.*

Join us at a reception featuring AAIDD book authors and journal editors. Meet your favorite editors and authors in a cocktail party atmosphere.

**ROOM: RIVERSIDE FOYER & LOUNGE**

7:00 – 8:30 pm

**Student and Early Career Professionals (SECP) Reception**

Students and early career professionals are invited to this networking reception at no additional cost.

Co-sponsored  
by The Ohio  
Nisonger  
Center

**ROOM: CITYSIDE FOYER & LOUNGE**

Wednesday, June 28

8:00 – 8:45 am

**Awards Breakfast**

Join us to recognize AAIDD members and others for their service to the field.

**ROOM: BALLROOM A**

12:00 – 1:00 pm

**Public Policy Luncheon**

Jim Ellis, JD, FAAIDD, and Ann Delpha, JD, will discuss the scope and impact of the Association's amicus briefs in their presentation, *AAIDD Before the Supreme Court*.

*Open to all attendees for the cost of a lunch ticket.*

**ROOMS: 12 AND 13**

**Exceptional Service  
Exceptional People**

Pharmacy Alternatives is a comprehensive pharmacy dedicated to helping all people we serve achieve their highest level of independence.

For more information, contact:

[www.palrx.com](http://www.palrx.com)

866.743.2443



Pharmacy Alternatives

If you are a Student or an Early Career Professional, you are particularly invited to join us for the following events:



Sunday, June 25

8:00 – 9:00 pm

President’s Reception

ROOM: CITYSIDE FOYER & LOUNGE

Tuesday, June 27

8:00 – 8:30 am

New Attendee Orientation

ROOM: 24

5:00 – 7:00 pm

Poster Presentations and Reception

ROOM: BALLROOM B

7:00 – 8:30 pm

Student and Early Career Professionals Networking Reception

ROOM: CITYSIDE FOYER & LOUNGE

Co-sponsored by The Ohio Nisonger Center

Wednesday, June 28

12:00 – 1:00 pm

Students and Early Career Professionals Luncheon

LUNCH TICKETS REQUIRED—LUNCH FEE \$15

Limited tickets available at registration

ROOM: 14

4:00 – 6:00 pm

Post Conference Session: “Writing for Publication”

ROOM: 23

Silent Auction

A silent auction will be held during regular exhibit hours. Bid on items of your choice!

Bidding closes at 11:00 am on Wednesday, June 28th.

Silent Auction proceeds will benefit: PEOPLE FIRST OF CONNECTICUT, INC.



Benchmark Human Services

The mission of Benchmark Human Services is to help people with disabilities and mental illness be more independent, be integrated into their communities, and reach their full potential.

- Supporting Individuals with Intensive Needs, Dual Diagnoses, and Forensic Backgrounds
- Mobile Crisis Systems
- Behavior Support
- ICF Operational and Compliance Consulting
- Community Transition and Monitoring
- Case Management



Benchmark Human Services is one of the nations leading providers of services to individuals with disabilities.

www.BenchmarkHS.com • 877.744.6145





## Career Center

Do you have a job to fill in the field of intellectual or developmental disabilities? AAIDD's Career Center can help.

Job postings are featured in our weekly Member Updates and also posted on our Facebook and twitter.

For more information, visit us at [www.aidd.org](http://www.aidd.org)

## Join AAIDD

AAIDD is the definitive membership organization and the authoritative source of information for those in the intellectual disability profession.

To explore membership options,

Visit us at [www.aidd.org](http://www.aidd.org)



Knowledge | Support | Empowerment

# Continuing Education Offerings

AAIDD is pleased to be providing up to five (5) hours of continuing professional education (CE) units for both social work and psychology during the pre- and post- conference sessions at this year’s Annual Meeting.

To receive continuing education credits you must:

- 1) pay the CE processing fee through registration,
- 2) have a room monitor sign off on your attendance card at the end of each session you attend, and
- 3) complete and turn in a session evaluation.

SESSION	SOCIAL WORK (NASW)	PSYCHOLOGY (APA)
<b>MONDAY, JUNE 26   1:00 PM – 4:00 PM</b>		
Dignity of Risk and of a Moral Voice: Carrying Forward the Impact of Bob Perske	3	—
Exploring Crucial Issues in Health Care and IDD with the CDC	3	3
Mindfulness and Acceptance-based Approaches to Improve the Health and Wellbeing of individuals with IDD, their Families, and their Staff	3	3
Promoting Health and Wellness in Older Adults with Intellectual and Developmental Disabilities	3	—
<b>WEDNESDAY, JUNE 28   4:00 PM – 6:00 PM (Complimentary)</b>		
Writing for Publication	2	2
Using Supports Budgets to Manage Sustainability in IDD Support Systems in an Uncertain Future	2	—

Grievance procedure and participant fee statement/refund policies are both available to all participants and may be located on the conference website at [www.aidd.org](http://www.aidd.org).

**142nd AAIDD  
Annual Meeting**  
June 25 – 28, 2018  
Hyatt Regency St. Louis  
at the Arch Hotel

SAVE • THE • DATE  
**St. Louis**

**aidd**  
American Association  
on Intellectual and  
Developmental Disabilities

	SUNDAY	MONDAY	TUESDAY	WEDNESDAY	THURSDAY
Morning		<p>Continental Breakfast 7:30 – 9:00 am</p> <p>Open Membership Meeting and Leadership Forum 9:00 – 10:00 am</p> <p>Meetings of the Assembly of Geographic Regions &amp; Assembly of Interest Networks 10:15 – 11:30 am</p>	<p>Continental Breakfast 7:00 – 8:30 am</p> <p>Interest Networks Business Meetings 7:30 – 8:30 am</p> <p>Exhibits Open 7:30 am – 4:00 pm</p> <p>New Attendees Orientation 8:00 – 8:30 am</p> <p>Opening Plenary Session 9:00 – 10:30 am</p> <p>Break 10:30 – 10:45 am</p> <p>Concurrent Sessions A 10:45 – 12:15 pm</p>	<p>Interest Networks Business Meetings 7:00 – 8:00 am</p> <p>Exhibits Open 7:30 – 11:00 am</p> <p>Awards Breakfast 8:00 – 8:45 am</p> <p>Exclusive Exhibit Time 8:45 – 9:15 am</p> <p>Plenary Session 9:15 – 10:45 am</p> <p>Break 10:45 – 11:00 am</p> <p>Concurrent Sessions D 11:00 am – 12:00 noon</p>	<p>Continental Breakfast 7:30 – 9:00 am</p> <p>Religion &amp; Spirituality Division Forum* 9:00 am – 12:00 pm</p>
Noon		<p>Lunch Buffet* 11:30 am – 1:00 pm</p>	<p>Interest Network Luncheons* 12:15 – 1:45 pm</p>	<p>SECP Luncheon* Education Luncheon* Public Policy Luncheon* 12:00 noon – 1:00 pm</p>	
Afternoon		<p>Pre Conference Sessions* 1:00 – 4:00 pm</p>	<p>Concurrent Sessions B 1:45 – 3:15 pm</p> <p>Break 3:15 – 3:30 pm</p> <p>Concurrent Sessions C 3:30 – 5:00 pm</p>	<p>Concurrent Sessions E 1:00 – 2:00 pm</p> <p>Break 2:00 – 2:15 pm</p> <p>Closing Plenary Session 2:15 – 3:45 pm</p>	
Evening	<p>Board Meeting 5:00 – 8:00 pm</p> <p>President's Reception 8:00 – 9:00 pm</p>	<p>Complimentary Pre Conference Session 4:30 – 5:30 pm</p> <p>Hartford Waterfront Tour* 6:30 – 7:30 pm</p>	<p>Poster Session and Reception 5:00 – 7:00 pm</p> <p>Publications Reception 7:00 – 8:30 pm</p> <p>Student and Early Career Professionals Networking Reception 7:00 – 8:30 pm</p>	<p>Complimentary Post Conference Sessions 4:00 – 6:00 pm</p> <p>Religion &amp; Spirituality Division Dinner* 7:00 pm</p>	

\* Additional fee required

# Sunday, June 25

5:00 pm – 8:00 pm

## Board of Directors Meeting

*Presiding: William C. Gaventa, MDiv, FAAIDD, President, AAIDD Board of Directors*

8:00 pm – 9:00 pm

## President's Reception

Open to all conference attendees at no additional cost.

**ROOM: CITYSIDE FOYER & LOUNGE**

# Monday, June 26

## Registration

8:00 am – 5:30 pm

## 7:30 – 9:00 am Complimentary Continental Breakfast

**ROOM: 27**

9:00 – 10:00 am

## Annual Open Membership Meeting and Leadership Forum

*Presiding: William C. Gaventa, MDiv, FAAIDD, President, AAIDD Board of Directors*

**ROOM: 27**

10:15 – 11:30 am

## The Assembly of Geographic Interests

*Presiding: Susan M. Havercamp, PhD, FAAIDD, President-Elect, AAIDD Board of Directors*

**ROOM: 25**

10:15 – 11:30 am

## The Assembly of Interest Networks

*Presiding: Elizabeth Perkins, PhD, RNLD, FAAIDD, Vice President, AAIDD Board of Directors*

**ROOM: 26**

11:30 am – 1:00 pm

## Lunch

Lunch is available for an additional fee. Limited number of tickets are available for purchase at the registration desk.

*Fee: \$20*

**ROOMS: 16 – 17**

## PRE CONFERENCE SESSIONS

1:00 – 4:00 pm

*Fee: \$35*

## RESEARCH COLLOQUIUM

### Building a Research Trajectory in Academic and Nonacademic Institutions Through Partnerships

*(Co-Sponsored by AAIDD's SECP and Research Interest Network)*

*Alexandra Bonardi, MS, MHA, FAAIDD, Human Services Research Institute*

*Anna Brady, Utah State University*

*Katey Burke, University of Kansas*

*Jillian Caldwell, Oklahoma State University*

*Drew Egli, Oklahoma State University*

*Sarah Hall, PhD, FAAIDD, Ashland University*

*Tamera Harper Shetron, Texas State University*

*Sheida Khamsi, University of Kansas*

*Sandra Magaña, PhD, University of Illinois at Chicago*

*Amanda Miller, University of Kansas*

*Ariel Schwartz, Boston University*

*Louis-Simon Maltais, Université du Québec à Trois-Rivières*

*I-Ting Hwang, Boston University*

The purpose of the research colloquium is to provide AAIDD students and early career professionals an opportunity to explore ways to develop a research trajectory and to present their research and network with leading IDD researchers and policymakers. Participants will receive feedback on how to translate their work into meaningful research, policy, and practice.

Colloquium presenters will present a review of literature, research questions, methods, and results. Following each presentation, Research Division members and AAIDD colloquium audience participants will engage in a brief open forum discussion to provide feedback to the participants on how the research fits into research, policy, and practice related to individuals with IDD. Discussion will also address sharing findings in multiple venues (i.e., peer-reviewed journals, practitioner-based journals, blogs, etc.).

**ROOM: 24**

1:00 – 4:00 pm

Fee: \$45

**Dignity of Risk and of a Moral Voice:  
Carrying Forward the Impact of Bob Perske**

(approved for 3 NASW CEs)

*William C. Gaventa, MDiv, FAAIDD, Summer Institute on  
Theology and Disability*

*Quincy Abbot, Retired*

*Akijo Bonnie Shoultz, MA, Syracuse University*

*Stephen Greenspan, PhD, FAAIDD, University of Connecticut  
(emeritus)*

Bob Perske, who died late in 2016, was a unique leader in the field of intellectual and developmental disabilities. He started his career as a clergyman; as an institutional chaplain, he crafted some of the earliest writings of pastoral care. His subsequent move to the Omaha Arc and collaboration with Wolf Wolfensberger and colleagues is crystallized in his classic essay on “The Dignity of Risk” in Wolfensberger’s book, *The Principle of Normalization in Human Services*. His writing, speaking and consulting skills led to a series of books on community inclusion, a number of them illustrated by the black and white illustrations of his gifted artist wife, Martha—one of the first artists to capture the dignity and beauty of everyday lives of people with IDD, their families, and friends. Bob then moved into the justice and ethics issues of people with intellectual and developmental disabilities in prison, particularly those on death row, and spent almost all of his “retired” life advocating and educating in this area with humble yet forceful leadership that invited and called others into action.

ROOM: 23

tion. The third will present data from a model educational program for doctors-in-training that covers topics related to children with IDD.

ROOM: 11

1:00 – 4:00 pm

Fee: \$45

**Managed Care Gets a Social Life to  
Improve Health Outcomes**

*Patricia Nobbie, PhD, Anthem*

*Donna Meltzer, National Association of Councils  
on Developmental Disabilities*

*Merrill Friedman, Anthem*

*Kenneth Smith, United Health Care*

*Sarah Lash, Anthem*

*Stephen Kaye, PhD, University of California, San Francisco*

This session will explore in some detail the increasing interest and attention to social determinants of health and their relationship to healthcare outcomes for individuals with IDD in a managed care environment. A diverse panel representing MCOs, quality experts and Councils on Developmental Disabilities will share ideas and solicit conversation on this topic in three parts; first, a review of the definitions and concept development in the area of social determinants of health and a review of the activities of DD Councils in this space; second, a discussion by representatives of the MCOs on initiatives in housing, employment and peer supports; and third, a review of the challenge of assessing the relationships between employment, housing, social supports and health outcomes, finishing with a charge to the field for more research in this area to build the necessary evidence base.

ROOM: 22

1:00 – 4:00 pm

Fee: \$45

**Exploring Crucial Issues in Health Care  
and IDD with the CDC**

(approved for 3 NASW and 3 APA CEs)

*Peter J. Smith, MD, MA, FAAIDD, University of Chicago*

*Dedra Smith, MSSL, Almost Home Kids*

*Georgina Peacock, MD, Centers for Disease Control and  
Prevention*

*Nicole Dowling, PhD, Centers for Disease Control  
and Prevention*

*Jeanne Bertolli, PhD, MPH, Centers for Disease Control  
and Prevention*

This session is a follow-up to the CDC pre-conference session held last year concerning the health of individuals with IDD. There will be three presentations, followed by a panel Q&A. The first presentation will describe current patterns of racial and ethnic health disparities within the population of individuals with IDD. The second will discuss the particular impact that infectious diseases, including Zika, have on this popula-

1:00 – 4:00 pm

Fee: \$45

**Mindfulness and Acceptance-Based Approaches to  
Improve the Health and Wellbeing of Individuals  
with IDD, their Families, and their Staff**

(approved for 3 NASW and 3 APA CEs)

*Yona Lunsky, PhD, FAAIDD, Centre for Addiction  
and Mental Health*

*Julie Brown, PhD*

In this workshop, we will review what is known about mindfulness and acceptance-based therapies, sometimes referred to as the third wave of behavior therapies, and how they can be applied to improve the health and well-being of individuals with IDD, their families, and the staff who work within the sector. We will focus on the three most studied approaches (mindfulness based stress reduction, acceptance and commitment therapy, and dialectical behavior therapy). We will consider how elements from each of these approaches can be adapted and modified for the IDD population.

ROOM: 12

Monday, June 26 (continued)

## PRE CONFERENCE SESSIONS (continued)

1:00 – 4:00 pm

Fee: \$45

### Promoting Health and Wellness in Older Adults with Intellectual and Developmental Disabilities

(approved for 3 NASW CEs)

Elizabeth Perkins, PhD, RNLD, FAAIDD, University of South Florida

Matt Holder, MD, MBA, Special Olympics, Inc.

Mindy Renfro, PhD, University of Montana

Yumi Shirai, PhD, University of Arizona

There is an increasing number of people with intellectual and developmental disabilities (IDD) who are aging. This session will highlight current research, evidence-based practices, established programs, and pilot programs underway that have been developed around the nation that support the successful aging of people with IDD. Following a primer on aging with IDD, presenters will discuss community based physical fitness programs, fall/mobility prevention programs, and enrichment programs that utilize art/creativity. The session will conclude with an interactive discussion and further sharing of available resources to aid providers to be more proactive to support the needs of this growing population.

ROOM: 13

6:30 – 7:30 pm

### Hartford Waterfront Tour

Fee: \$20

All attendees are invited to join us on this waterfront tour on the Lady Katharine Cruise Charter.



Meet at 6:00 pm on Level 3 of the Convention Center (5 – 7 minute walk to embarking area)

7:30 – 8:30 pm

### Local Arrangements Committee Reception

By invitation only

## COMPLIMENTARY PRE CONFERENCE SESSION

4:30 – 5:30 pm

### Reading & Signing with Dan Barry, author of *The Boys in the Bunkhouse*

With this Dickensian tale from America's heartland, *New York Times* writer and columnist Dan Barry tells the harrowing yet uplifting story of the exploitation and abuse of a resilient group of men with intellectual disability, and the heroic efforts of those who helped them to find justice and reclaim their lives.

In the tiny Iowa farm town of Atalissa, dozens of men, all with intellectual disability and all from Texas, lived in an old schoolhouse. Before dawn each morning, they were bussed to a nearby processing plant, where they eviscerated turkeys in return for food, lodging, and \$65 a month. They lived in near servitude for more than thirty years, enduring increasing neglect, exploitation, and physical and emotional abuse—until state social workers, local journalists, and one tenacious labor lawyer helped these men achieve freedom.

Drawing on exhaustive interviews, Dan Barry dives deeply into the lives of the men, recording their memories of suffering, loneliness and fleeting joy, as well as the undying hope they maintained despite their traumatic circumstances. Barry explores how a small Iowa town remained oblivious to the plight of these men, analyzes the many causes for such profound and chronic negligence, and lays out the impact of the men's dramatic court case, which has spurred advocates—including President Obama—to push for just pay and improved working conditions for people living with disabilities.

A luminous work of social justice, told with compassion and compelling detail, *The Boys in the Bunkhouse* is more than just inspired storytelling. It is a clarion call for a vigilance that ensures inclusion and dignity for all.

ROOM: 27

# Tuesday, June 27

**Registration**  
7:00 am – 5:00 pm

**EXHIBITS OPEN from 7:30 am – 4:00 pm**

Complimentary Continental Breakfast available from 7:00 – 8:30 am.

For a complete list of Exhibitors, see pages 53 – 56.

**ROOM: BALLROOM FOYER**

**INTEREST NETWORK MEETINGS**

**7:30 – 8:30 am**

**Administration and Community Services Interest Networks Joint Breakfast Meeting**

Effective Recruitment and Retention Strategies of Direct Support Professionals

*Speaker: Amy Hewitt, PhD, FAAIDD, University of Minnesota*

**ROOM: 25**

**Direct Support Professionals Interest Network**

*Presiding: Colleen McLaughlin, MEd, FAAIDD, Temple University*

**ROOM: 12**

**Family Interest Network**

*Presiding: Thomas Fish, PhD, FAAIDD, The Ohio State University*

**ROOM: 13**

**International Interest Network**

*Presiding: Caya Chiu, National Taiwan Normal University & Maria Carbó Carreté, PhD, Universitat Ramon Llull*

**ROOM: 22**

**Multicultural Concerns Interest Network**

*Presiding: Ellis "Pat" Craig, PhD, FAAIDD, Consultant*

**ROOM: 11**

**Social Work Interest Network**

*Presiding: Mark D. McManus, PhD, MSSW, University of Akron*

**ROOM: 23**

**Technology Interest Network**

*Presiding: Shea Tanis, PhD, University of Colorado*

**ROOM: 14**

8:00 – 8:30 am

**Welcome and Orientation for First-Time Annual Meeting Attendees**

*Presiding: William C. Gaventa, MDiv, FAAIDD, President, AAIDD Board of Directors*

If this is your first AAIDD Annual Meeting, please join us for this short and informative orientation.

**ROOM: 24**

**OPENING SESSION**

9:00 am – 10:30 am

**OPENING SESSION**

**Welcoming Remarks:**

*William C. Gaventa, MDiv, FAAIDD  
President, AAIDD Board of Directors*

**PLENARY SESSION**

**Health Equity**



**Sandy Magaña, PhD**  
*University of Illinois at Chicago*



**Wendy Jones, MEd, MSW**  
*Georgetown University*



**Alexandria Bonardi, MS, MHA, FAAIDD**  
*Human Services Research Institute*

*Room: Ballroom C*

10:30 – 10:45 am

**Coffee Break in the Exhibit Hall**

Meet your colleagues for a complimentary refreshment break.

Tuesday, June 27 *(continued)*

## CONCURRENT SESSIONS A

10:45 am – 12:15 pm

### IMPROVING PRIMARY CARE OUTCOMES

*Moderator: John Tschida, MPP, Association of University Centers on Disabilities*

#### **Bridging Research with Policy and Practice to Improve the Health of Adults with IDD in Ontario: The H-CARDD Story**

*Yona Lunsky, PhD, FAAIDD, Centre for Addiction and Mental Health*

*Yani Hamdani, PhD, Centre for Addiction and Mental Health*

*Barry Isaacs, PhD, Surrey Place Centre*

#### **The Impact of Medicaid Managed Care on Primary Care and Emergency Department Utilization Among Adults with Intellectual and Developmental Disabilities**

*Kiyoshi Yamaki, PhD, University of Illinois at Chicago*

*Coady Wing, PhD, Indiana University Bloomington*

*Dale Mitchell, PhD, University of Illinois at Chicago*

*Randall Owen, PhD, University of Illinois at Chicago*

*Tamar Heller, PhD, University of Illinois at Chicago*

#### **The Role of Organizations in Facilitating the Best Possible Health of People with Intellectual and Developmental Disabilities**

*Carli Friedman, PhD, The Council on Quality and Leadership*

*Mary Kay Rizzolo, PhD, The Council on Quality and Leadership*

**ROOM: 22**

Please stop by the

### AAIDD Bookstore

located in the Exhibit Hall to examine our new AAIDD books and journals!

#### Show your pride in AAIDD!

Visit the bookstore and check out our new logo products—caps and t-shirts. On the back of each shirt is the inspirational quote: "Be the change you want to see in the world."



### IMPROVING OUR APPROACH TO PEOPLE WITH COMPLEX EMOTIONAL SUPPORT NEEDS

*Moderator: Carrie Coffield, PhD, Rutgers University*

#### **Advocating for People with IDD who Have Experienced Abuse: Collaborative, Evidence-Based Strategies Across the Lifespan**

*Emily Lund, PhD, Center for Psychiatric Rehabilitation & Boston University*

*Catherine Corr, PhD, Vanderbilt University*

#### **Supporting the Mental Health and Well-Being of an Emerging Multi-Problem Clientele**

*Chris Snell, CLASS, Inc.*

*Paul Van Almkerk, EdD, Ipswich Consultation and Training, Inc.*

*William Fisher, PhD, University of Massachusetts Lowell*

*Amanda Wik, MS, University of Massachusetts Lowell*

*Kellie Wallace, University of Massachusetts Lowell*

**ROOM: 23**

### ENGAGING EMPLOYERS AND FAMILIES IN EMPLOYMENT OUTCOMES

*Moderator: Thomas Fish, PhD, FAAIDD, The Ohio State University*

#### **Engaging Families Effectively: Results from a Forums and Facebook Group Qualitative Research Study**

*John Kramer, PhD, University of Massachusetts Boston*

*Jennifer Bose, MA, University of Massachusetts Boston*

*Eric McVay, SABE*

#### **Organizational Transformation to Integrated Employment & Community Life Engagement: A Holistic Approach to a Meaningful Day**

*John Kramer, PhD, University of Massachusetts Boston*

*Amie Lulinski, PhD, FAAIDD, The Arc of the US*

*Jennifer Sulewski, PhD, University of Massachusetts Boston*

*Richard P. Swierat, The Arc of Westchester County*

#### **Short-Term and One-year Outcomes for Family Employment Awareness Training (FEAT) Attendees**

*Judith Gross, PhD, FAAIDD, University of Kansas*

*Grace L. Francis, PhD, George Mason University*

#### **Move to Work—An innovative Community Based Day Program**

*Kristin Rotas, MA, Human Resources Unlimited*

*Gregg Thompson, Human Resources Unlimited*

**ROOM: 24**



**UNDERSTANDING THE SIS DATA**

Moderator: James Lemanowicz, FAAIDD, Temple University

**The Supports Intensity Scales: Translation Process, Comparative Psychometric Properties, and International Usage**

James R. Thompson, PhD, FAAIDD, University of Kansas  
 Atilla Cavkaytar, PhD, Anadolu University  
 John Agosta, PhD, Human Services Research Institute  
 Marc J. Tassé, PhD, FAAIDD, The Ohio State University

**ROOM: 25**

**UNDERSTANDING THE IMPACT OF PUBLIC POLICY ON QUALITY OF LIFE**

Moderator: Anthony Rodriguez, PhD, Providence College

**Comparing Quality of Life: How to Reduce the Gaps between Citizens?**

Cristina Simões, PhD, Universidade de Lisboa  
 Sofia Santos, PhD, Universidade de Lisboa

**Factors that Explain the Disagreements in Quality of Life Perceptions of People with Intellectual Disability and their Proxies**

Cristina Simões, PhD, Universidade de Lisboa  
 Sofia Santos, PhD, Universidade de Lisboa

**Disability Policy in a Time of Change**

Robert Schalock, PhD, FAAIDD, Hastings College  
 Rutherford Turnbull, III, JD, FAAIDD, University of Kansas  
 Miguel Ángel Verdugo, PhD, FAAIDD, Universidad de Salamanca  
 Claudia Claes, PhD, University of Gent  
 Ruth Luckasson, JD, FAAIDD, University of New Mexico  
 Karrie Shogren, PhD, FAAIDD, University of Kansas

**ROOM: 26**

**PROMOTING EDUCATIONAL INCLUSION**

Moderator: Dalun Zhang, PhD, FAAIDD, Texas A&M University

**Special Education Directors' Attitudes Towards Access to General Education For Students with Intellectual Disability: Findings of a State Survey**

Julia White, PhD, Syracuse University  
 Meghan Cosier, PhD, Trinity Washington University  
 Qiu Wang, PhD, Syracuse University

**State Least Restrictive Environment Regulations and Their Relationships to Inclusion for Students with Intellectual Disability**

Julia White, PhD, Syracuse University  
 Meghan Cosier, PhD, Trinity Washington University  
 Deborah Taub, PhD, University of North Carolina

**Teacher Agency for Inclusive Education**

Jennifer Kurth, PhD, University of Kansas  
 Mary Morningstar, PhD, University of Kansas  
 Heather Allcock, PhD, Providence College

**ROOM: 27**

**POSTER SYMPOSIA**

**HEALTH**

Moderator: Cathy Ficker Terrill, FAAIDD

**ROOM: 15**

**BOARD #1**

**How Research on Future Planning Can Inform the Role Health Care Providers and Service Professionals Play in Promoting the Wellbeing of Individuals with Disabilities and Families**

Lynne Tomasa, PhD, MSW, University of Arizona

**BOARD #2**

**Integrated Health Care**

Melissa DiSipio, MSA, FAAIDD, Philadelphia Coordinated Health Care  
 Denise Brown, MEd, Philadelphia Coordinated Health Care

**BOARD #3**

**Life Experience and Outcomes in the Population with ID and Dementia: Results from National Core Indicators**

Alexandra Bonardi, MS, MPH, FAAIDD, Human Services Research Institute  
 Matthew Janicki, PhD, University of Illinois at Chicago

**BOARD #4**

**Massachusetts Innovative Action to Support those Aging with an Intellectual and Developmental Disability**

Sharon Oxx, Massachusetts Department of Developmental Services  
 Laney Bruner-Canhoto, PhD, Massachusetts Department of Developmental Services  
 Christine J. Clifford, MHP, University of Massachusetts Medical School  
 Emily Lauer, MPH, University of Massachusetts Medical School

**BOARD #5**

**A Systems Change Approach to Person Centered Collaborative Care for People with Intellectual and Developmental Disabilities**

Karen Luken, MS, Easter Seals UCP NC & The Arc of NC  
 Jill Hinton, PhD, Easter Seals UCP NC & The Center for START Services  
 Erika Hagensen, MS, The Arc of NC

*Continued next page*

Tuesday, June 27 (continued)

POSTER SYMPOSIA (continued)

BOARD #6

Gyn Warrior Princess: Educating Young Women Regarding Gynecologic Office Exams Utilizing an Educational Comic Book and Video Format (Graphic Medicine)

Arlene Smalls, MD, Christiana Care

BOARD #7

Including People with Disabilities: Public Health Workforce Competencies

Jessica Minor, MPP, Association of University Centers on Disabilities

Adriane Griffen, DrPH, Association of University Centers on Disabilities

BOARD #8

One Community at a Time: Promoting Health Equity through the Engagement of a Special Olympics' Healthy Community in Florida

Kristi Messer MSW, MPH, Nova Southeastern University

Karlyn G. Emile DHS, South Florida Healthy Community & Special Olympics Florida

Nicole Zaffiris, MPH, Nova Southeastern University & South Florida Healthy Community

Nicole Cook, PhD, Nova Southeastern University

BOARD #9

Inclusive Health for People with Intellectual Disability

Cheryl Peng, Special Olympics International

Amy Harris Shellard, MPH, Special Olympics International

Darcie Mersereau, MPH, Special Olympics International

Jessica Minor, MPP, Association of University Centers on Disabilities

Janelle Nanavati, MPH, Special Olympics International

Kristin Hughes Srou, MBA, Special Olympics International

Amie D'Amico, Special Olympics Connecticut

BOARD #10

Promoting Health and Wellness: Special Olympics Fitness Programming

Lindsay DuBois, PhD, Special Olympics

Kyle Washburn, Special Olympics

Monica Forquer, Special Olympics

Amy Harris Shellard, MPH, Special Olympics International

ROOM: 15

12:15 - 1:45 pm

Lunch

Fee \$20

Lunch is available for purchase for all attendees— a limited number of lunch tickets are available at the registration desk.

ROOMS: 16 - 17

12:15 - 1:45 pm

INTEREST NETWORK LUNCH MEETINGS

The following leadership groups will meet over lunch.

Ticket required (lunch fee \$20)

Limited number of tickets are available at registration

- Psychology—Room 12
Religion and Spirituality—Room 13
Research— Rooms 16 - 17
Social Work—Rooms 16 - 17

12:15 - 1:45 pm

Past Presidents' Lunch

(By invitation only)

Come visit our exhibitors and learn about the latest technology and services to enhance your organization!

CONCURRENT SESSIONS B

1:45 - 3:15 pm

EXPLORING HEALTH CARE DELIVERY MODELS

Moderator: Nicole Cadovius, MBA, FAAIDD, The National Council & National Task Group on ID and Dementia Practices

Healthcare Delivery Systems for Adults with Intellectual and Developmental Disabilities: An Examination of Three Models in the US and Their Impact

David Ervin, MA, The Resource Exchange

Matthew Holder, MD, MBA, Special Olympics, Inc

Stephen Sulkes, MD, University of Rochester

Harnessing the Power of Medicaid Data to Identify and Address Health Needs for People with IDD

Alissa Stevens, MPH, Centers for Disease Control and Prevention

Suzanne McDermott, PhD, University of South Carolina

Margaret Turk, MD, SUNY Upstate Medical University

ROOM: 22

**IMPROVING MENTAL HEALTH AND CRISIS SERVICES**

*Moderator: Shea Tanis, PhD, University of Colorado*

**Crisis Intervention Services for Individuals with Intellectual and Developmental Disabilities**

*Justin Kuehl, PsyD, FAAIDD, Milwaukee County Behavioral Health Division*

**Trauma-Informed Care for IDD Providers**

*Matthew Mason, PhD, Georgetown University  
Diane Jacobstein, PhD, Georgetown University*

**ROOM: 23**

**PROMOTING INDEPENDENCE, SELF DETERMINATION, & SELF DIRECTION**

*Moderator: Rhonda Black, EdD, University of Hawaii at Manoa*

**New American Movement for People with Disabilities (NAMPWD or NAM)**

*Michael Williams, MSW, Community Access Unlimited*

**Promoting Independence through Supported Decision Making: Theoretical and Legal Reasoning**

*Dalun Zhang, PhD, FAAIDD, Texas A&M University  
Jessica Walker, MA, Texas A&M University  
Dianey Leal, MA, Texas A&M University*

**Self-Management of Health by People with Intellectual and Developmental Disabilities**

*Carli Friedman, PhD, The Council on Quality and Leadership  
Mary Kay Rizzolo, PhD, The Council on Quality and Leadership*

**The Development of Self-Regulated Learning through Self-Determination to Build Health and Well-Being**

*Susan Palmer, PhD, FAAIDD, University of Kansas*

**ROOM: 24**

**UNDERSTANDING THE ELEMENTS OF ID**

*Moderator: Marty Ford, JD, The Arc US*

**The Relation Between Intellectual Functioning and Adaptive Behavior In the Diagnosis of Intellectual Disability: An Error in DSM-5**

*Marc J. Tassé, PhD, FAAIDD, The Ohio State University  
Robert Schalock, PhD, FAAIDD, Hastings College  
Ruth Luckasson, JD, FAAIDD, University of New Mexico*

**ROOM: 25**

**Congratulations to our Newest Fellows**

**Alexandra Bonardi, MS, MHA**

Human Services Research Institute (Cambridge, MA)

**Linda Draayers**

Options for Community Growth, Inc. (Hubertus, WI)

**Sarah Hall, PhD**

Ashland University (Columbus, OH)

**Amie Lulinski, PhD**

The Arc of the United States (Washington, DC)

**Thomas Pat Landry**

Gulf Coast Social Services (Baton Rouge, LA)

**Christopher Nadelbach, MA**

Developmental Disabilities Consulting Services, Inc. (Kew Gardens, NY)

**Holly Riddle, JD**

NC Division of Mental Health, Developmental Disabilities and Substance Abuse Services (Raleigh, NC)

**Amy Rosenstein, PhD**

Eastern Illinois University (Urbana, IL)

**Lori Sedlezky, MSW**

ao Strategies (Bethesda, MD)

**Sheryl White-Scott, MD**

NYSOPWDD (New York, NY)

**Dan D. Zhang, PhD**

Texas A&M University (College Station, TX)

**PARTICIPATING IN FAITH COMMUNITIES: HCBS REGS AND WELL BEING**

*Moderator: William C. Gaventa, MDiv, FAAIDD, Summer Theology Institute*

**Paths to Well-Being: Leadership, Identity and Flourishing in Faith Communities**

*Shelly Christensen, MA, Inclusion Innovations & Jewish Leadership Institute on Disabilities and Inclusion  
Caitlin Bailey, MS, University of Delaware  
Anne Masters, MA, FAAIDD, Archdiocese of Newark  
Katie Anderson, MDiv, Cedar Lake  
Deborah Fisher, PsyD, Deborah Fisher Consultants*

**ROOM: 26**

Tuesday, June 27 (continued)

**CONCURRENT SESSIONS B (continued)**

**PROMOTING INCLUSION IN YOUTH SETTINGS**

*Moderator: Colleen Thoma, PhD, FAAIDD, Virginia Commonwealth University*

**The Social World of High School: Are Students with Intellectual Disability Included?**

*Holly Jacobs, MA, University of Massachusetts Boston  
Gary Siperstein, PhD, University of Massachusetts Boston*

**Youths' Perspectives on Belonging: Contributions to Understanding Social Inclusion**

*Denise DuBois, MScOT, University of Toronto  
Rebecca Renwick, PhD, University of Toronto  
Deb Cameron, PhD, University of Toronto  
Ann Fudge Schormans, PhD, McMaster University*

**ROOM: 27**

**POSTER SYMPOSIA**

**ASSESSMENT AND BEHAVIORAL HEALTH**

*Moderator: Joanna Pierson, PhD, FAAIDD, The Arc of Frederick County*

**ROOM: 15**

**BOARD #1**

**A Systematic Literature Review of Social Validity in Single-case Research: Prevalence and Application**

*Melinda Snodgrass, PhD, Hunter College CUNY  
Moon Y. Chung, MEd, University of Illinois at Urbana-Champaign  
Hedda Meadan, PhD, University of Illinois at Urbana-Champaign  
James W. Halle, PhD, University of Illinois at Urbana-Champaign*

**BOARD #2**

**Mixed Methods Research: Applications in Descriptive and Intervention Research**

*Melinda Snodgrass, PhD, Hunter College CUNY  
Catherine Corr, PhD, Vanderbilt University  
Hedda Meadan, PhD, University of Illinois at Urbana-Champaign  
Rosa Milagros Santos, PhD, University of Illinois at Urbana-Champaign*

**BOARD #3**

**Participatory Measurement Development of a Health-Care Outcome Measure: The PEDI-PRO**

*Jessica Kramer, PhD, Boston University  
Ariel Schwartz, MS, Boston University*

**BOARD #4**

**Assessing Suicide Risk: Developing a Process to Support Clinical Judgement for Suicide Risk Assessment in Persons Presenting with ID or ASD**

*Diane Morin, PhD, FAAIDD, Université du Québec à Montréal  
Cécile Bardon, PhD, Université du Québec à Montréal  
Xenia Halmov, MA, Université du Québec à Montréal  
Brian Mishara, PhD, Université du Québec à Montréal  
Daphne Morin, MA, CIUSSS du Centre-Ouest-de-l'île-de-Montréal  
Julie Mrineau-Cote, PHD, CIUSSS du Centre-Ouest-de-l'île-de-Montréal  
Jonathan Weiss, PhD, York University*

**BOARD #5**

**DM-ID-2: A Tool for Building Mental Health**

*Robert Fletcher DSW, NADD*

**BOARD #6**

**The Efficacy of a Systematic Process for Developing Function-Based Treatment for Young Children with Disabilities**

*Mubarak Aldosari, EdD, Prince Sattam Bin Abdulaziz University*

**BOARD #7**

**Using Technology to Unleash the Creative Spirit in People with Developmental Disabilities**

*Philip Proctor, MA, AHRC New York City  
Carol Ryklin, AHRC New York City*

**BOARD #8**

**What Do NCI Data Demonstrate About Adults Receiving State DD Services who Display Self-Injurious Behavior?**

*Dorothy Hiersteiner, MPP, Human Services Research Institute*

**SAVE THE DATE**



JULY 29 – 31, 2018 | BALTIMORE, MD

3:30 – 5:00 pm

**UNDERSTANDING HEALTH RISK DATA**

Moderator: Kimberly W. Fisher, PhD, Arizona State University

**Understanding Mortality Risk—In Order to Prevent it**

Catherine Ivy, Georgia Department of Behavioral Health & Developmental Disabilities

Gwendell Gravitt, Jr., Georgia Department of Behavioral Health & Developmental Disabilities

**Predictors of Emergency Room and Hospital Utilization among Adults with Intellectual and Developmental Disabilities in New York City**

Meghan G. Blaskowitz, DrPH, Duquesne University

**Prevalence of Health Risk Indicators Among Special Olympics athletes: A Cross-Sectional Look at Healthy Athletes Data**

Molly Sadowsky, MPH, Special Olympics

Lindsay Dubois, PhD, Special Olympics

Amy Shellard, MPH, Special Olympics

ROOM: 22

**IMPROVING ASSESSMENT AND INTERVENTION IN BEHAVIORAL HEALTH**

Moderator: Jean Phelps, MSW, Lifelinks

**Animated Questions for Assessing Depressive Symptoms in People with Intellectual Disability**

Jia-Wen Guo, PhD, University of Utah

Deborah A. Bilder, MD, University of Utah

Erin Johnson, PhD, University of Utah

Marjorie A. Pett, DSW, University of Utah

Elizabeth M. Cardell, PhD, University of Utah

Lien Fan Shen, PhD, University of Utah

John Matt Jameson, PhD, University of Utah

**Improving Health Care for People with Intellectual and Developmental Disabilities: It's All About Forging the Right Relationships**

Thomas Cheetham, MD, FAAIDD, Tennessee Department of IDD

Patti Killingsworth, Tennessee Bureau of TennCare

Jana Dreyzehner, MD, Amerigroup

ROOM: 23

**SUPPORTING SIBLINGS IN THEIR ADVOCACY**

Moderator: Hilda Trahan, Evergreen Life Services

**Sibling Advocacy: For and with their Brothers and Sisters with Developmental Disabilities**

Catherine Arnold, MS, University of Illinois at Chicago & Sibling Leadership Network

Meghan M. Burke, PhD University of Illinois at Urbana-Champaign

Aleksa Owen, MSW, University of Illinois

**Supporting Self-Determination: How Siblings Assist Adults with IDD in Making Decisions About Employment and Independent Living**

Meghan Burke, PhD, University of Illinois at Urbana-Champaign

Zachary Rossetti, PhD, Boston University

Sarah Hall, PhD, FAAIDD, Ashland University

**Supporting the Relationships between People with Disabilities and their Siblings: An Approach of Importance for the Health and Wellbeing of People with Intellectual and Developmental Disabilities**

Ariella Meltzer, PhD, University of New South Wales

ROOM: 24

**UNDERSTANDING WHAT "EVIDENCE-BASED" MEANS**

Moderator: Mark McManus, PhD, University of Akron

**Evidence and Evidence-Based Practices in the Field Of IDD**

Robert Schalock, PhD, FAAIDD, Hastings College

Claudia Claes, PhD, University of Gent

Miguel Ángel Verdugo, PhD, FAAIDD, Universidad de Salamanca

ROOM: 25

**UNDERSTANDING THE IMPACT OF THE SETTINGS RULE ON HOUSING**

Moderator: Sharon Gomez, FAAIDD, Evergreen Life Services

**Separating Housing from Services: Promoting Independence, Wellness and Personal Satisfaction**

Deborah Fisher, PsyD, Deborah Fisher Consultants

Tim Wiens, MSW, Maryland Jubilee Association

Diane Dressler, Community Life Resources

ROOM: 26

**UNDERSTANDING THE DATA ON TRANSITION**

Moderator: Elisa Velardo, MMHS, FAAIDD, Connecticut Department of Developmental Services

**Exploring Transition in New Jersey: Research into the Experiences of Emerging Adults with IDD & Their Families**

Carrie Coffield, PhD, Rutgers University

**Youth and Parent Perspectives of an Environment-Focused Problem Solving Intervention to Increase Participation of Transition-Age Youth with Developmental Disabilities**

I-Ting Hwang, Boston University

Jessica Kramer, PhD, Boston University

Melissa Levin, Boston University

Ann Carrellas, MSW, Wayne State University

Preethy S. Samuel, PhD, Wayne State University

ROOM: 27

Tuesday, June 27 (continued)

## POSTER SYMPOSIA

### EMPLOYMENT & ORGANIZATIONAL ISSUES

Moderator: Melissa DiSipio, MSA, FAAIDD,  
Philadelphia Coordinated Health Care

ROOM: 15

#### BOARD #1

##### Changing Attitudes and Outcomes: Family Employment Awareness Training (FEAT)

Claire Rosenbaum, MMus, Rhode Island College

Paul Lacava, PhD, Rhode Island College

Judith Gross, PhD, FAAIDD, University of Kansas

Grace L. Francis, PhD, George Mason University

#### BOARD #2

##### From Courage to Cookies: Reinventing The Arc New London County, A Case Study

Kathleen Stauffer, MPA, The Arc New London, County

#### BOARD #3

##### Factors that Influence Readiness to Work with People with Disabilities

Gabriela Walker, PhD, University of South Dakota

#### BOARD #4

##### Promoting Health and Wellbeing through Employment

Mary Kay Cunningham, MSW, Temple University

Celia Feinstein, MA, Temple University

#### BOARD #5

##### Self-Employment and Entrepreneurship: How to make it REAL!

Michelle Ouimette, MBA, Ability Beyond

Linda Rammler, PhD, University of Connecticut

#### BOARD #6

##### Transitions to Work: Creating Employment for All Abilities

Miriam Heyman, PhD, Ruderman Family Foundation

#### BOARD #7

##### Becoming Colleagues: Attending to the Health and Well-Being of Your Peer in a Self-Determined Dual-License Teaching Program

Jacklyn Brehm, Providence College

Alysha Decrescenzo, Providence College

Reed Fraser, Providence College

Jamie Metzger, Providence College

Shannon McMahon, Providence College

Anthony Rodriguez, PhD, Providence College

Megan Tucker, Providence College

#### BOARD #8

##### Emergency Planning and Preparedness for People with Disabilities and Access and Functional Needs: Findings from a Survey in Pennsylvania

Kevin Donley MEd, Temple University

Jamie Arasz Prioli, Temple University

Amy Goldman, MS, Temple University

Sally Gould-Taylor, PhD, Temple University

#### BOARD #9

##### Improving Care for People with Intellectual and Developmental Disabilities: Development of the Attitude to Action Model

Melissa Desroches, MSN, University of Massachusetts Dartmouth

Susan Hunter-Revell, PhD, University of Massachusetts Dartmouth

#### BOARD #10

##### Supporting Parents of Children with IDD: An Innovative Shadowing Program Offered By Students

Elise Milot, PhD, Université Laval

Marie Grandisson, PhD, Université Laval

Sylvie Tétreault, PhD, Haute École de Travail social et de la Santé

Myriam Chrétiën-Vincent, MSc, Université Laval

Anne-Sophie Allaire, MSc, Université Laval

#### BOARD #11

##### Training and Coaching in Telepractice: The Process and Procedures for Designing Professional Development Using Technology

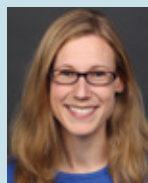
Hedda Meadan, PhD, University of Illinois at Urbana-Champaign

Melinda Snodgrass, PhD, Hunter College CUNY

Moon Y. Chung, MEd, University of Illinois at Urbana-Champaign

Jamie N. Pearson, MA, University of Illinois at Urbana-Champaign

### Meet our Newly Elected Members of the Board of Directors



**Laura Lee McIntyre**  
Vice President



**Matt Van Auken**  
Member at Large



5:00 – 7:00 pm

### Poster Session and Reception

Refreshments and cash bar.

For a list of posters, authors and board assignments, please go to page 37.

**ROOM: BALLROOM B**

7:00 – 8:30 pm

### Student and Early Career Professionals Networking Reception

Collegial networking event for students and early career professionals

**ROOM: CITYSIDE FOYER AND LOUNGE**

Co-sponsored by The Ohio State University Nisonger Center

7:00 – 8:30 pm

### AAIDD Publications Reception

*Open to all conference attendees at no additional cost.*

Join us at a reception featuring AAIDD's journal editors and book authors.

Meet your favorite editors and authors in a cocktail party atmosphere.

**ROOM: RIVERSIDE FOYER & LOUNGE**

8:30 pm

### AAIDD Region X Reception

*Open to all conference attendees at the Front Street Bristo, across the street from the Convention Center. Cash bar.*

## Congratulations to our Student Scholarships Winners

### Direct Support Professionals Interest Network

- **Trent Call**, Oklahoma State University  
*Exploring Wellbeing among Caregivers: A Comparison of Paid Staff and Family Members in the Caregiving Roll*

### Health and Wellness Interest Network

- **Molly Sadowsky, MPH**, Special Olympics  
*Prevalence of Health Risk Indicators Among Special Olympic Athletes: A Cross-Sectional Look at Healthy Athletes Data*

### International Interest Network

- **Nadia Abouzeid, PhD**, Université du Québec à Montréal  
*Current Challenges in the Assessment of Global Developmental Disorder or Intellectual Disabilities in Very Young Children*

### Research Interest Network

- **Cristina Mumbardó-Adam** (Universitat Ramon Llull)  
*Differential Item Functioning of the Self-Determination Inventory: Student Report (Spanish Version)*

### Mental Health Services Interest Network

- **Elizabeth Block, MD**, University of Michigan  
*Missed Diagnosis of Autism in Child Psychiatric Inpatients*
- **Samantha Fuld, MSW**, New York University Silver School of Social Work  
*Countering Stigma as an Essential Strategy for Promoting Mental Health in People with ID/DD: Implications for Direct Practice and Service Delivery*

### Student & Early Career Professional Interest Network

- **Kristina Rios, MEd**, University of Illinois at Urbana-Champaign  
*Examining the Perspectives of Latino Families of Children with Autism Spectrum Disorder Toward Special Education Advocacy*
- **Jillian Caldwell**, Oklahoma State University  
*Predictors of Resilience in Families of Adults with Intellectual and Developmental Disabilities following Deinstitutionalization*

# Wednesday, June 28

### Registration

7:00 am – 3:00 pm

### EXHIBITS OPEN from 7:30 – 11:00 am

Complimentary refreshments available in the Exhibit Hall

For a list of Exhibitors, see pages 53 – 56.

**ROOM: BALLROOM FOYER**

7:00 – 8:00 am

### Health & Wellness Interest Network

*Presiding: Kruti Acharya, MD, University of Illinois at Chicago & Carrie Coffield, PhD, Rutgers University*

**ROOM: 11**

7:00 – 8:00 am

### Humanist Interest Network

*Presiding: Jim Mullin, MEd, FAAIDD, Retired*

**ROOM: 13**

7:00 – 8:00 am

### Reflection Time Hosted by the Religion & Spirituality Interest Network

*Poetry Reading by David Coulter, MD, FAAIDD, Boston Children's Hospital*

**ROOM: 22**

7:00 – 8:00 am

### Region X

*Presiding: Michael Bloom, MA, FAAIDD, Lifelinks, Inc.*

**ROOM: 23**

7:00 – 8:00 am

### Social & Sexual Concerns Interest Network

*Presiding: Rhonda Black, PhD, University of Hawaii Manoa*

**ROOM: 12**



8:45 – 9:15 am

Explore the exhibit hall without missing any education sessions, join us for some exclusive exhibit time and enjoy a cup of coffee as you interact with our exhibitors and sponsors.

8:00 – 8:45 am

### Awards Breakfast

*Open to all conference attendees*

AAIDD is pleased to recognize its members and others for their service.

Join us in honoring their accomplishments at this year's Awards Breakfast.

*Presiding: Elisa Velardo, MMHS, FAAIDD, Awards and Fellowship Committee Chair*

**ROOM: BALLROOM A**

### CONGRATULATIONS TO THE 2017 AWARD RECIPIENTS

#### Dybwad Humanitarian

Cathy Ficker Terrill, MS, FAAIDD

#### Early Career

Patricia Navas Machado, PhD

#### Education

Susan Copeland, PhD, FAAIDD

#### Full Community Inclusion

TRIAD Program, Vanderbilt Kennedy Center

#### Hervey B. Wilbur Historic Preservation

Jerry Smith, MBA

#### Leadership

Katie Arnold, MS

#### Media

Chris Serres

#### Special

Play Together Initiative, Trillium Health

#### Student

Maria Paula Mello, MEd

### PLENARY SESSION

9:15 – 10:45 am

### Fully Alive



**Tim Shriver, PhD**  
*Special Olympics*

**ROOM: BALLROOM C**



10:45 – 11:00 am

**Break**

Exhibits and Silent Auction Close at 11:00 am  
**Last chance to visit our Exhibitors!**

**CONCURRENT SESSIONS D**

11:00 am – 12:00 pm

**PROMOTING HEALTH-FOCUSED CHOICES**

*Moderator: David Helm, PhD, FAAIDD, University of Massachusetts Boston*

**I Can Do It, You Can Do It, a University-Community Collaboration to Increase Wellness Among Alabamians with Disabilities**

*Brian Geiger, EdD, The Horizons School*  
*David Morris, PhD, University of Alabama at Birmingham*  
*Christopher Eidson, MS, University of Alabama at Birmingham*

**The Use of Videos to Improve Health Self-Promotion and Participation in Healthy Lifestyles for Adolescents and Adults with Down Syndrome**

*Brian Chicoine, MD, Adult Down Syndrome Center*  
*Gina Littlejohn, Russell Institute for Research and Innovation*  
*Sarah Kozmic, Russell Institute for Research and Innovation*

**ROOM: 22**

**APPRECIATING THE ROLE AND IMPACT OF DSPS**

*Moderator: Barbara Mazzella, MS, FAAIDD, Massachusetts Department of Developmental Services*

**Description and Results of an Ongoing Project Implementing Post-Assault Interventions with Staff to Ensure Wellbeing for the Staff and the Person They Support**

*Chuck Lester, PhD, Hope Community Resources, Alaska*  
*Rick Benjamin, MA, Hope Community Resources, Alaska*

**National Core Indicators Staff Stability Survey: Working Together to Improve the Quality and Stability of the DSP Workforce**

*Dorothy Hiersteiner, MPP, Human Services Research Institute*  
*Mary Lou Bourne, MA, NASDDDS*

**The Perspective of Managers of Social Services on Self-Determination of People with Intellectual Disability**

*Louis-Simon Maltais, Université du Québec à Trois-Rivières*  
*Martin Caouette, PhD, Université du Québec à Trois-Rivières*  
*Coralie Sarazin, Université du Québec à Trois-Rivières*

**ROOM: 23**

**PROMOTING PARENT-COMMUNITY PARTNERSHIPS**

*Moderator: Lori Sedlezky, MSW, FAAIDD, ao Strategies*

**Participatory Asset Mapping: Using Community Resources to Strengthen Schools and Their Families**

*Judith Gross, PhD, FAAIDD, University of Kansas*

**Position and Involvement of Parents of Children with Mental Developmental Disabilities at Their Child's School**

*Adva Zilberstein-Haham, PhD, Ohalo College*

**ROOM: 24**

**ENGAGING IN PRESERVICE AND TEACHER TRAINING**

*Moderator: Michael Bloom, MA, FAAIDD, LifeLinks*

**Improving Self-Determination Assessment, Intervention, and Training Resources**

*Kathryn Burke, MEd, University of Kansas*  
*Sheida Khamsi, MEd, University of Kansas*

**Supporting Preservice Teachers to Meet the Needs of Learners with Developmental Disabilities**

*Alisa Lowrey, PhD, University of Southern Mississippi*

**ROOM: 25**

**CREATING OUR COMMONWEALTH: THE MASSACHUSETTS INCLUSION INITIATIVE**

*Moderator: Susan Palmer, PhD, FAAIDD, University of Kansas*

**Massachusetts Initiatives Fostering Social Inclusion and Community Engagement**

*Larry Tummino, MA, Massachusetts Department of Developmental Services*  
*Jim Ross, The Arc of Massachusetts*  
*Christine J. Clifford, MHP, University of Massachusetts Medical School*  
*Emily Lauer, MPH, University of Massachusetts Medical School*

**ROOM: 26**

**EMERGING TRAINING STRATEGIES**

*Moderator: Evan Dean, PhD, University of Kansas*

**Embedded Sensory Integration Activities for Mind and Body: Our Work in the School and the Community to Build Healthy Habits and Optimize Learning**

*Lauren Wyse, Providence College*  
*Megan Tucker, Providence College*  
*Elizabeth Sideravage, Providence College*  
*Anthony Rodriguez, PhD, Providence College*  
*Thomas O'Connor, Providence College*  
*Shannon McMahon, Providence College*  
*Jamie Metzger, Providence College*  
*Colleen Hartigan, Providence College*  
*Reed Fraser, Providence College*  
*Samantha Floer, Providence College*  
*Alysha DeCrescenzo, Providence College*  
*Jacklyn Brehm, Providence College*  
*Lauren Bidell, Providence College*

*Continued next page*

Wednesday, June 28 (continued)

**CONCURRENT SESSIONS D (continued)**

**Use of Virtual Reality Technologies to Train Fire Safety Skills and Bus Riding Skills to Chinese Children with Autism**

*Dawen Xu, PhD, Hefei, University of Technology*  
*Mian Wang, PhD, University of California, Santa Barbara*  
*Cunliang Fu, MS, Hefei University of Technology*  
*Yixin Lin, MA, University of California, Santa Barbara*  
*Kaijie Tu, MS, Hefei University of Technology*  
*Kouzi Xing, MS, Hefei University of Technology*  
*Yan He, Rights into Action for Youth with Disability*  
*Jing Lu, Rights into Action for Youth with Disability*

**ROOM: 27**

**POSTER SYMPOSIA**

**FAMILIES & EDUCATION**

*Moderator: Amy Hewitt, PhD, FAAIDD, University of Minnesota*

**ROOM: 15**

**BOARD #1**

**Conducting Research with Families: Recruitment Strategies and Intervention Experiences**

*Jody Van Ness, MA, University of Minnesota*  
*Angela Amado, PhD, University of Minnesota*  
*Amy S. Hewitt, PhD, FAAIDD, University of Minnesota*  
*Kelly Nye Lengerman, PhD, University of Minnesota*

**BOARD #2**

**Exploring Families Perceptions and Experiences of Respite Services for Adults with an Intellectual Disability in Ireland**

*Suzanne Guerin, PhD, University College Dublin*  
*Emma Nicholson, PhD, University College Dublin*  
*Fiona Keogh, PhD, Genio*  
*Philip Dodd, MD, St. Michael's House Intellectual Disability Services*

**BOARD #3**

**Impact of Family Support on Caregiving Burden and Satisfaction**

*Tamar Heller, PhD, University of Illinois at Chicago*  
*Caitlin Crabb, MPH, University of Illinois at Chicago*  
*Randall Owen, PhD, University of Illinois at Chicago*

**BOARD #4**

**Partnering with Culturally Diverse Families During Transition Planning: Critical Approaches and Results**

*Mary Morningstar, PhD, University of Kansas*  
*Courtney Wilt, MA, University of Kansas*

**BOARD #5**

**The Perceptions on Family Quality of Life and Positive Psychology Indicators in Kurdish Parents of Children with IDD in Turkey**

*Bekir Fatih Meral, PhD, Sakarya University*  
*Nail Anil Cinisli, MA, Hakkari University*

**BOARD #6**

**Best Practices for Including Children with Intellectual and Developmental Disabilities in Inclusive Education Systems in LMICs**

*Christiana Okyere, MA, Queens University*

**BOARD #7**

**Connecting Broken Bridge for Transition from Middle to High School: Inquiry on Support Needs of Students with Disabilities, Parents, and Teachers**

*Suk-Hyang Lee, PhD, Ewha Womans University*

**BOARD #8**

**Teaching and Supporting Students with Intellectual Disabilities in Kinshasa, Democratic Republic of Congo**

*Heather Michelle Aldersey, PhD, Queens University*  
*Shana Jackson Haines, PhD, Vermont University*

**BOARD #9**

**The IEP Meeting Process: Evidence-Based Strategies Designed to Increase and Enhance Parent and Student Involvement**

*Tracy Gershwin Mueller, PhD, University of Northern Colorado*  
*Grace L. Francis, PhD, George Mason University*

**BOARD #10**

**Families Experiences Working with Special Education Advocates to Promote Family-School Partnerships**

*Samantha Goldman, PhD, Assumption College*  
*Meghan Burke, PhD, University of Illinois at Urbana-Champaign*

**BOARD #11**

**Reciprocal Family-Researcher Partnerships: Researching Innovative Practice as a Means to Positive Family Outcomes**

*Shana Haines, PhD, Vermont University*  
*Heather Michelle Aldersey, PhD, Queens University*  
*Chun-Yu Chiu, PhD, National Taiwan Normal University*

Don't forget to pick up  
**Silent Auction** items by 1:00 pm

**12:00 – 1:00 pm**

**Lunch on Your Own**

The following lunches are available for a fee. Limited number of tickets available at the registration desk.

**12:00 – 1:00 pm**

**Students and Early Career Professionals Luncheon**

Lunch ticket \$15

Come and meet other students and Early Career Professionals, a great networking opportunity!

**ROOM: 14**

**12:00 – 1:00 pm**

**Public Policy Luncheon:  
AAIDD Before the Supreme Court**

Lunch ticket \$20 (open to all conference attendees, lunch ticket required)

You're invited to hear this presentation by James W. Ellis, JD, FAAIDD and Ann M. Delpha, JD from the University of New Mexico School of Law.

**ROOM: 12 – 13**

**12:00 – 1:00 pm**

**Education Interest Network Business Meeting Luncheon**

Lunch ticket \$20

Open to all members of the Education Division, lunch ticket required

**ROOM: 11**

**CONCURRENT SESSIONS E**

**1:00 – 2:00 pm**

**EDUCATING TOMORROW'S HEALTHCARE PROFESSIONALS**

*Moderator: Elizabeth Perkins, PhD, RNLD, FAAIDD, University of South Florida*

**Educating Tomorrow's Healthcare Professionals**

*Cindy Chatzis, Community Networks of Specialized Care  
Tom Archer, Community Networks of Specialized Care  
Sarah O'Flanagan, University of Western Ontario*

**ROOM: 22**

**SUPPORTING PARENTS WITH INTELLECTUAL DISABILITY**

*Moderator: Ellis "Pat" Craig, PhD, FAAIDD, Consultant*

**Backdoor Eugenics: A Social Determinant for the Health and Wellbeing of Parents with Intellectual and Developmental Disabilities and Their Children**

*Nicole Brisson, PhD, Sage Haven Associates, LLC  
Susan Yuan, PhD, The Association for Successful Parenting  
Bernadette Irwin, The Association for Successful Parenting*

**ROOM: 23**

**MANAGING WEIGHT AND EXERCISE GOALS**

*Moderator: Michael Wehmeyer, PhD, FAAIDD, University of Kansas*

**POWERSforID: A Personalized Online Weight and Exercise Intervention for Overweight Adults with Intellectual Disability**

*William Neumeier, PhD, University of Alabama at Birmingham  
Mohan Thirumalai, PHD, University of Alabama at Birmingham  
Nichole Guerra, MS, The Resource Exchange  
Betty Geer, DNP, The Resource Exchange  
David Ervin, MA, The Resource Exchange  
James H. Rimmer, PhD, University of Alabama at Birmingham*

**Promoting Healthy Eating and Physical Activity in Adolescents with Intellectual and Developmental Disabilities**

*Linda Bandini, PhD, University of Massachusetts Medical School  
Carol Curtin, PhD, University of Massachusetts Medical School  
Richard Fleming, PhD, University of Massachusetts Boston  
Heidi Stanish, PhD, University of Massachusetts Boston  
Aviva Must, PhD, Tufts University School of Medicine  
Sarah Phillips, MS, MPH, Tufts University School of Medicine  
Melissa Maslin, MS, University of Massachusetts Medical School*

**ROOM: 24**

Wednesday, June 28 (continued)

## CONCURRENT SESSIONS E (continued)

### SUPPORTING STUDENTS IN POSTSECONDARY EDUCATION

Moderator: *Alexandra Bonardi, MS, MHA, FAAIDD, Human Services Research Institute*

#### Developing Supports for Full Inclusion of Individuals with Intellectual Disability in a Large University

*Courtney Wilt, MA, University of Kansas*

*Mary Morningstar, PhD, University of Kansas*

#### Why Young Adults with Developmental Disability Do Not Engage in Postsecondary Education or Employment? Is There Any Way Out?

*Ching-Shu Jing Fang, MSW, PhD, University of Kentucky*

ROOM: 25

### CREATING SAFE HAVENS

Moderator: *Shelly Christensen, MA, FAAIDD, Inclusion Innovations & Jewish Leadership Institute on Disabilities and Inclusion*

#### Safe Havens for Difficult Conversations: How We Talk with Each Other

*William Gaventa, MDiv, FAAIDD, Summer Institute on Theology and Disability*

*Jennifer Jones, PhD, Oklahoma State University*

*Rutherford Turnbull, III, JD, FAAIDD, University of Kansas*

ROOM: 26

### ENHANCING ACADEMIC OUTCOMES FOR CHILDREN WITH IDD

Moderator: *Ruth Luckasson, JD, FAAIDD, University of New Mexico*

#### Enhancing Academic Outcomes for Children with Intellectual and Developmental Disabilities

*Christopher Lemons, PhD, Vanderbilt University*

*Lauren Lejeune, MA, Vanderbilt University*

*Jill Allor, PhD, Southern Methodist University*

ROOM: 27

## POSTER SYMPOSIA

### SELF DETERMINATION

Moderator: *Karrie A. Shogren, PhD, FAAIDD, University of Kansas*

ROOM: 15

#### BOARD #1

#### An International Approach to Align UN CRPD Articles with Quality Of Life Indicators and Support Strategies

*Marco Lombardi, MS, HoGent University College*

*Hanne Vandebussche, MA, Gent University*

*Claudia Claes, PhD, University of Gent*

*Robert Schalock, PhD, FAAIDD, Hastings College*

#### BOARD #2

#### Are Persons With Intellectual Disability and Significant Supports Living a Life With Quality?

*Sofia Santos, PhD, Universidade de Lisboa*

*Antonio Rodrigo, Cooperativa de Empreendedorismo para o Desenvolvimento Economico e Social de Todo o Pas*

*Fernando Gomes, PhD, Universidade de Lisboa*

#### BOARD #3

#### Are We In-Sync? An Examination of Service Providers Perceptions of Service Needs and Implications for Quality of Life of Individuals with Developmental Disabilities

*Ann Wai-Yee Kwong, University of California, Santa Barbara*

*Jessica Hai, University of California, Santa Barbara*

*Lindsay Glugatch, University of California, Santa Barbara*

*Mian Wang, PhD, University of California, Santa Barbara*

*Katerina Ford, University of California, Santa Barbara*

*Dana Nguyen, University of California, Santa Barbara*

#### BOARD #4

#### Comparing Quality of Life Outcomes for Adults with an Intellectual Disability Accessing Different Types of Respite Services in Ireland

*Suzanne Guerin, PhD, University College Dublin*

*Emma Nicholson, PhD, University College Dublin*

*Fiona Keogh, PhD, Genio*

*Philip Dodd, MD, St. Michael's House Intellectual Disability Services*

#### BOARD #5

#### Descriptive Study of Caseworkers' Practices to Support the Development of Self-Determination of Adults with Intellectual Disability

*Martin Caouette, PhD, Université du Québec à Trois-Rivières*

*Coralie Sarazin, Université du Québec à Trois-Rivières*

*Louis-Simon Maltais, Université du Québec à Trois-Rivières*

#### BOARD #6

#### Quality of Life for Families with Children/Youth with Autism Spectrum Disorder

*José Nogueira, Universidade de Lisboa & Secretary of State for Inclusion of Persons with Disability*

#### BOARD #7

#### Self-Determination as a Predictor of Quality of Life and Rights of People with Intellectual Disability: Where are we Going?

*Cristina Simeões, PhD, Universidade de Lisboa*

*Sofia Santos, PhD, Universidade de Lisboa*

Continued next page

**BOARD #8**

**Self-Determination of Adults with Intellectual Disability in the French Institutional Context**

*Martin Caouette, PhD, Université du Québec à Trois-Rivières*  
*Louis-Simon Maltais, Université du Québec à Trois-Rivières*  
*Sylvie Hamel, PhD, Université du Québec à Trois-Rivières*

**ROOM: 15**

**7:00 pm**

**Religion & Spirituality Interest Network Dinner**

(offsite event)

See page 33 for more information.

**CLOSING PLENARY**

**2:15–3:45 pm**

**Promoting Health & Wellness**



**Susan Havercamp,**  
**PhD, FAAIDD**  
*President-Elect*  
*AAIDD Board of Directors*

**ROOM: BALLROOM C**

**COMPLIMENTARY POST CONFERENCE SESSIONS**

**4:00 – 6:00 pm**

**Writing for Publication**

*(approved for 2 NASW and 2 APA CEs)*

*Deborah Fidler, PhD, Colorado State University, Editor, AJIDD*

*James R. Thompson, PhD, FAAIDD, University of Kansas, Editor, IDD*

*Michael L. Wehmeyer, PhD, FAAIDD, University of Kansas, Co-Editor, Inclusion*

*Karrie A. Shogren, PhD, FAAIDD, University of Kansas, Co-Editor, Inclusion*

The session addresses what professionals in the field need to know about how to be published in a scholarly journal: the elements of a research report needed for journal publication; the types of research and other articles published by the three AAIDD journals; how to determine which journal is the best fit for your work; and the policies and processes involved in publication in scholarly journals in both print and electronic formats.

**ROOM: 23**

**4:00 – 6:00 pm**

**Using Supports Budgets to Manage Sustainability in IDD Support Systems in an Uncertain Future**

*(approved for 2 NASW CEs)*

*John Agosta, PhD, Human Services Research Institute*

IDD support systems are faced with ever-increasing demand for supports and services, but with finite resources available to fund such services. Policy makers are increasingly seeking system solutions that help individuals access needed supports and services, but that also improve long-term financial sustainability. While doing so, they also seek to promote other policy objectives such as expanding services to all or most who need them, providing a flexible and sufficient array of supports so that individuals can remain living home with families, developing singular solutions for multiple service populations, and curbing costs through involvement with managed care. Finally, new generations of service recipients seek supports that emphasize self-direction and inclusion. In the face of an uncertain political landscape, continuing business as usual is not an option. This presentation will offer information, experiences and lessons learned from work to restructure IDD support systems across several jurisdictions in the USA and Canada. This work most commonly involves use of assessment, notably using the *Supports Intensity Scale*, to help set personal supports budgets for service recipients. Overall, presenters will offer recommendations regarding how policy makers can manage sustainability while also further the aims of systems that are responsive to the support needs and preferences of current and future generations of service recipients.

**ROOM: 24**

## CONGRATULATIONS TO OUR 30 YEAR MEMBERS

**Thank you for continuous membership!**

Leonard Abbeduto, PhD, FAAIDD  
Allan Bergman  
Michael Bernatovich  
Susan Bonner  
Guy Caruso, PhD, FAAIDD  
Ellis Craig, PhD, FAAIDD  
Robert Dinerstein, JD, FAAIDD  
Alan Factor, PhD  
Kathleen Fadden, MD  
J. Carolyn Graff, PhD, RN, FAAIDD  
Twhanna Green, PhD  
Judy Itzkowitz, PhD  
Nancy Kopnick  
John McDonnell, PhD  
Ron Messner  
Dale Morrissey  
James Mullin, MEd, FAAIDD  
Gerald Nebeker, PhD  
Trevor Parmenter, PhD, FAAIDD  
Charles Randall

## IN APPRECIATION

**AAIDD Corporate Members:**

*Thank you  
for your Support!*

Anthem  
Bethesda Lutheran Communities  
Children's Therapy Center  
Community Access Unlimited, Inc.  
Elegant Clinical Corporation  
Evergreen Presbyterian Ministries  
HSRI  
Inclusion Resources  
Mosaic  
Nisonger Center—  
The Ohio State University  
Nursing and Therapy Services  
of Colorado  
REACH Program  
at College of Charleston  
Smoky Mountain Center  
South Mississippi Regional Center  
The Arc of the United States  
The Resource Exchange  
Tri-County Services  
Volunteers of America Southeast



**International Association for  
the Scientific Study of Intellectual  
and Developmental Disabilities**

The International Association for the Scientific Study of Intellectual and Developmental Disabilities (IASSIDD) is the first and only world-wide group dedicated to the scientific study of intellectual disability. Founded in 1964, IASSIDD is an international, interdisciplinary scientific organization which promotes worldwide research and exchange of information on intellectual disabilities. IASSIDD is a non-governmental member of the World Health Organization.

### UPCOMING SCIENTIFIC CONFERENCES

#### **2017 Asia Pacific Conference**

Bangkok, Thailand  
13th to 16th November

#### **2018 European Conference**

Athens, Greece  
18th to 20th July

#### **2019 World Congress**

Glasgow, Scotland  
5th to 9th August

### SCIENTIFIC JOURNALS

*Journal of Policy and Practice  
in Intellectual Disabilities*

*Journal of Intellectual Disability Research*

### ACTIVE SPECIAL INTEREST RESEARCH GROUPS

- Ageing
- Autism
- Challenging Behaviour & Mental Health
- Comparative Policy & Practice
- Down Syndrome
- Ethics
- Families
- Physical Health
- Inclusive Education
- Parenting with Intellectual Disability
- Profound Intellectual & Multiple Disabilities
- Quality of Life

Further Information and Membership Details: [www.iassidd.org](http://www.iassidd.org)





Change the world with Behavior Analysis

[bao.unt.edu](http://bao.unt.edu)

## Our Services

### BACB Approved Courses

BCaBA, BCBA:  
Course sequences approved by the Behavior Analysis Certification Board (BACB) for certification as BCBA or BCaBC.

1

### Fast Track

The Fast Track program is a self-paced BCBA course sequence that allows you to complete each course at your own pace.

2

### Continuing Education

Available online for your convenience; Supervisor Training, CE's, RBT, Positive Parenting, Writing Solutions & Verbal Behavior.

3

## About Us

The mission of Behavior Analysis Online is to deliver high quality education in behavior analysis to people worldwide using advanced instructional technologies.



Some of Our Distinguished Course Designers & Lecturers



## CONTACT US

1155 Union Circle #310919 Denton TX, 76203  
Phone. (940)565-2561 | Website. [bao.unt.edu](http://bao.unt.edu)  
Email. [BEHVDLinfo@unt.edu](mailto:BEHVDLinfo@unt.edu)



## RUBY ELECTRONIC DOCS

*If you provide services for people with intellectual, developmental and mental health disabilities, Ruby Electronic Docs is the app you need.*



The simplified electronic medical records system for agencies serving individuals with intellectual, developmental and mental health disabilities.

**Ruby Electronic Docs** allows your agency's direct care support staff to quickly and easily enter and access critical information from any web-enabled device: **desktop, laptop, or tablet**

For additional information please contact **Dr. Karen Gaston, Ed. D.** at **860-519-7077** or email **karen@rubyelectronicdocs.com**



RUBY ELECTRONIC DOCS  
*Progress Note and Clinic Software*  
[www.rubyelectronicdocs.com](http://www.rubyelectronicdocs.com)



Our mission is to raise awareness and promote actions and policies addressing public health and health equity for people with disabilities.

We come from multiple disciplines, including social and rehabilitative services, policy, medical and health professions, epidemiology, urban planning and environmental studies, and social sciences.

**Join the Disability Section of the American Public Health Association and gain access to:**

- The latest public health research
- Disability-related job postings
- Networking and career development
- Opportunities to present your research
- Student scholarships

**To join or learn more, please contact:**  
**Mara Nery-Hurwit at [nerymb@plu.edu](mailto:nerymb@plu.edu)**



[/APHADisabilitysection](https://www.facebook.com/APHADisabilitysection)



[@APHADisability](https://twitter.com/APHADisability)

*"It's time to go Paperless"*



***Electronic Medical Record  
system specialized for  
Developmental Disabilities  
Providers***

**KEY FEATURES INCLUDE:**

Support for all Programs, Comprehensive Client Record, Detailed Service Plans, Specialized Data Tracking, Document Management, Auditable Service Delivery Reports, Record Review Score Cards, Vast Collection of Agency Data, Reporting, Graphing and much more...

For information please visit: [www.iCentrix.com](http://www.iCentrix.com)  
or email [julie@icentrix.com](mailto:julie@icentrix.com)



## TUESDAY, JUNE 27

12:15 – 1:45 pm

### Religion and Spirituality Division Lunch Meeting

Cost: \$20.00

Presiding: Neil Cudney, *Christian Horizons Resource & Leadership*

## WEDNESDAY, JUNE 28

7:00 – 8:00 am

### Reflection Time

Join us to hear a poetry reading by David Coulter, MD, FAAIDD, Boston Children's Hospital

**ROOM 23**

7:00 pm

### Religion and Spirituality Division Dinner

Cost: \$36.95

Please join the Religion and Spirituality Division for our Annual Dinner, always a night of fun, fellowship and networking.

Meet in the hotel lobby at 6:40 pm.

**LOCATION:** Front Street Bistro, 39 Front Street

9:00 am – 12:00 noon

### Religion and Spirituality Division Forum

Cost: \$30, Continental Breakfast included

### Home & Community Based Services (HCBS) and Supporting a Person's Faith and Spiritual Desires

Deborah Fisher will present her work around HCBS and supporting the faith and spiritual needs and desires of persons with IDD. She will help us understand the regulations as well as the importance of accessing a person's spiritual preferences not simply to meet regulatory compliance, but from a posture of promoting integrated, meaningful and self-directed life experiences. The presentation will address her work with providers, faith communities, families and most importantly, individuals with disabilities.

Following her presentation, she will lead us in a discussion to help move us beyond theory to practice. We will explore together what tools, resources and research may yet need to be done, and how the Division of Religion and Spirituality might support that development.

**ROOM: 24**

## HENRI J. NOUWEN LEADERSHIP AWARD

The AAIDD Religion & Spirituality Division is pleased to present the

### 2017 Henri J. Nouwen Leadership Award to Dr. Thomas Hoeksema, Sr.

Dr. Thomas Hoeksema, Sr. has dedicated his entire career of over 40 years to learning from, advocating for, and working alongside people with disabilities and their families. Grounded in a strong belief in mutuality and interdependence between persons of all abilities, his personal and professional contributions and pioneering efforts have made a lasting difference within the faith community.



He helped pioneer the special education program at Calvin College in 1978. He served as a professor and coordinator of the program, as well as advisor to students, until 2011. He created the Office of Services for Students with Disabilities and worked with Calvin College to create a barrier-free campus for students with limited mobility. His passion for students led him to also serve as the Director of Calvin College's Institute on Inclusive Schooling from 1997–2001.

Beyond Calvin College, Dr. Hoeksema led, taught and gently guided other organizations. As a member of the founding group of the Christian Learning Center (CLC), he has been integral in establishing and maintaining CLC's theological basis for—and the practical application of—the education and inclusion of people with disabilities in schools and churches. He served within his own denomination as a member of the Christian Reformed Church's Committee on Disability Concerns including six years as its Chair. He served on the Board of Directors for Friendship Ministries, CLC Network, and the Editorial Advisory Board for both the *International Journal of Whole Schooling* (2004–2009), and the *Journal of Religion, Disability and Health* (1994–present).

His published works include over 30 articles in academic and theological journals, such as *The Banner*, *Christian Home and School*, *Occasional Journal of Religion and Developmental Disabilities*, *Networks*, *The Journal of the Christian Council on Persons with Disabilities*, *Screening Disability: Essays on Cinema and Disability*, *Christian Educators Journal*, and *Journal of Religion, Disability and Health*.

The Division of Religion and Spirituality, in the spirit of Henry Nouwen, honors Tom Hoeksema and the legacy he has built as a pioneer of inclusion, a teacher of theology, and a minister to students of all levels of ability.

## Registration Schedule

Registration will open as follows:

- Monday, June 26 ..... 8:00 am – 5:30 pm
- Tuesday, June 27 ..... 7:00 am – 5:00 pm
- Wednesday, June 28..... 7:00 am – 3:00 pm
- Thursday, June 29 ..... 8:00 am – 10:00 am

## Admittance To The Annual Meeting

Registrants are required to wear their badges for all sessions, exhibits, and other events. Door monitors will be instructed not to admit anyone without a badge. The president’s reception is the only exception and no badge is required. Pre- and post-conference meetings also require tickets.

## Silent Auction

A silent auction will be held in the Exhibit area during the regular exhibit hours. Bid on items of your choice! Bidding closes at 11:00 am on Wednesday, June 28. All items must be picked up by 1:00 pm on June 28.

## Exhibit Hours

The exhibits are an integral part of the educational program; we invite you to visit them. A listing of exhibitors and the products they are displaying are listed on pages 53 through 56 of this program. Acceptance of exhibits by AAIDD does not imply an endorsement.

## Bookstore Hours

The AAIDD Bookstore will be open during regular exhibit hours. Publications will be for sale. Stop by to examine our new books and journals. The Bookstore is located in the Exhibit Hall.

## Attire/Dress Code

Attire at the 2017 Annual Meeting is business casual. Wear comfortable shoes and dress in layers.

## Internet Access

Complimentary Wi-Fi will be available to all meeting registrants in all public lobbies and meeting spaces of the Convention Center. The code will be provided at the Opening Session.

## Social Media

Share your experiences & photos using the hashtag **#AAIDD17**

## SOCIAL MEDIA

### Keeping Up With AAIDD

#### CHECK OUT AAIDD ON FACEBOOK!



Like us on Facebook to connect with AAIDD and network with other disability professionals.

#### YouTube

#### CHECK OUT AAIDD ON YOUTUBE!

You will find a wide variety of videos on topics ranging from the justice system and intellectual disability to special education best practices to classification and intellectual disability.

#### CHECK OUT AAIDD ON TWITTER!



Twitter is a great way to stay connected to AAIDD. We regularly post information about upcoming events and publications in addition to keeping you updated on the latest in national disability news.

#### CHECK OUT AAIDD ON LINKEDIN!



LinkedIn has the world’s largest professional network on the internet with 161 million members. Joining our LinkedIn group is a great way to connect with professionals in the field you may not come into contact with otherwise.

#### CHECK OUT AAIDD ON PINTEREST!



One of the newer social media platforms, Pinterest provides a space for users to organize and share images. We are continually building up content on our pinboards so you can share our images with others and spread the word about AAIDD news, events, and resources.



# Orange Socks<sup>®</sup>

If you are a parent or sibling of someone with a disability or life-long condition we want your story.

The best information a new parent can get is from someone who has walked the path.  
**Let us record your story so others can learn from you.**

Stop by our booth for more information

[www.orangesocks.org](http://www.orangesocks.org)  
[info@orangesocks.org](mailto:info@orangesocks.org)  
844-722-8636

## Attendance Verification Check-in System

for staff and individuals you support

Our check-in system generates reports and alerts showing:

<p><b>who</b></p>	<p><b>when</b></p>	<p><b>where</b></p>	<p><b>missed check-ins</b> <b>alert triggered</b></p>
-------------------	--------------------	---------------------	---

**Ideal for day and night shifts, remote workers, independent individuals, and more.**

- Check-in anytime from anyplace
- Know people arrived at the designated location and the time they checked in
- Know if they're awake and still there
- Get alerts when they don't check in
- We can even make wake-up calls
- Access via telephone, mobile app, or web
- Manage online and get reports
- Share info with other software
- It's customizable, cost effective, and reliable
- Fits into best practice models, aids with compliance, and third party verification
- Helps promote safety and accountability



**Safety & Accountability. Anytime, Anywhere.**

[info@steadycare.com](mailto:info@steadycare.com) (866) 578-3239 [www.steadycare.com](http://www.steadycare.com)



## Join a growing field with multiple career options **and the opportunity to help others!**

Professionals in applied behavior analysis are in high demand all over the world in a variety of clinical and organizational settings and have the opportunity to enhance the quality of life and experiences of their clients.

For more information on applied behavior analysis, certification, or our other programs, visit <http://aba.fit.edu/>

### **Questions?**

Call 321-674-8382, opt. 2,  
or email [abareg@fit.edu](mailto:abareg@fit.edu).



**Continuing Education**

*Florida Institute of Technology*

Tuesday, June 27 | 5:00 – 7:00 pm

## AGING

### BOARD #1

#### **Aging and Intellectual and Developmental Disabilities: A Changing Landscape**

*Sherry Neal, HRS, Inc.*

### BOARD #2

#### **Promoting Healthy Aging: Nurse Practitioner Model of an In-home Intervention to Stay Well and Healthy!**

*Joan Hahn, PhD, Gerontological Nurse Consultant*

*Harriet U. Aronow, PhD, Cedars-Sinai Medical Center*

### BOARD #3

#### **Providing Appropriate Supports to Individuals Aging with an Intellectual Disability. Are We There Yet?**

*Patricia Navas, PhD, Universidad de Salamanca*

*Laura E. Gómez, PhD, Universidad de Oviedo*

*Benito Arias, PhD, Universidad de Valladolid*

*María De Los Angeles Alcedo, PhD, Universidad de Oviedo*

*Veronica M. Guillen, PhD, Universidad de Cantabria*

*Eva Vicente, PhD, Universidad de Zaragoza*

*Delfin Montero, PhD, Universidad de Deusto*

*Natalia Larraz, PhD, Universidad de Zaragoza*

### BOARD #4

#### **Self Determination and Services and Supports for People with IDD as they Age**

*Caitlin Bailey, MS, University of Delaware*

*Lauren Pasko, University of Delaware*

*Bridget Pettit, University of Delaware*

*Juliann Emory, University of Delaware*

## ASSESSMENT

### BOARD #5

#### **Analysis of the Relations Between Support Needs, Adaptive Behavior and Self-Determination Through Results Obtained From Four Spanish Children**

*Veronica M. Guillen, PhD, Universidad de Cantabria*

*Miguel Ángel Verdugo, PhD, FAAIDD, Universidad de Salamanca*

*Patricia Navas, PhD, Universidad de Salamanca*

*Eva Vicente, PhD, Universidad de Zaragoza*

*Antonio Amor, MA, Universidad de Salamanca*

*Virginia Aguayo, MA, Universidad de Salamanca*

*Maria Fernandez, MA, Universidad de Salamanca*

*Benito Arias, PhD, Universidad de Valladolid*

### BOARD #6

#### **Clinical Unmet Needs and Burden in Fragile X Syndrome: Results of a Targeted Literature Review**

*Melissa Raspa, PhD, RTI International*

*Patricia Sacco, RPh, RTI Health Solutions*

*Donald B. Bailey, PhD, RTI International*

*Jeannie Visootsak, MD, Ovid Therapeutics*

*Raquel Cabo, Ovid Therapeutics*

### BOARD #7

#### **Confirming the Factor Structure of Adaptive Behavior: Conceptual, Social, and Practical**

*Marc J. Tassé, PhD, FAAIDD, The Ohio State University*

*Giulia Balboni, PhD, FAAIDD, Università di Perugia*

*Robert L. Schalock, PhD, FAAIDD, Hastings College*

*Patricia Navas, PhD, Universidad de Salamanca*

*Rebecca Andridge, PhD, The Ohio State University*

*Kelsey Bush, MA, The Ohio State University*

### BOARD #8

#### **Current Challenges in the Assessment of Global Developmental Disorder or Intellectual Disability in Very Young Children**

*Nadia Abouzeid, PhD, Université du Québec à Montréal*

*Mélina Rivard, PhD, Université du Québec à Montréal*

*Melanie Bolduc, Université du Québec à Montréal*

*Marjorie Morin, Université du Québec à Montréal*

*Diane Morin, PhD, FAAIDD, Université du Québec à Montréal*

*Cline Mercier, PhD, Université du Québec à Montréal*

*Malvina Klag, PhD, See Things My Way Centre for Innovation in Autism and Intellectual Disabilities*

### BOARD #9

#### **Exploring a New Measure of Student Self-Determination: The Self-Determination Inventory-Student Report**

*Sheida K. Raley, MA, University of Kansas*

*Karrie A. Shogren, PhD, FAAIDD, University of Kansas*

### BOARD #10

#### **Functional Limitation Testing on Individuals with Intellectual Disability**

*Julie Mangeot, PT, Consultant*

### BOARD #11

#### **Item Response Theory Applied to Self-Determination Measurement: The Self-Determination Inventory Student Self-Report (Spanish Version)**

*Cristina Mumbardó-Adam, MA, Ramon Llull University*

*Joan Guàrdia-Olmos, PhD, University of Barcelona*

*Climent Giné, PhD, FAAIDD, Ramon Llull University*

*Eva Vicente, PhD, Universidad de Zaragoza*

*Sheida K. Raley, MA, University of Kansas*

*Karrie A. Shogren, PhD, FAAIDD, University of Kansas*

### BOARD #12

#### **Psychometric Properties of a New Measure of Self-Determination: The Self-Determination Inventory Student Self-Report (Spanish Version)**

*Cristina Mumbardó-Adam, MA, Ramon Llull University*

*Joan Guàrdia-Olmos, PhD, University of Barcelona*

*Climent Giné, PhD, FAAIDD, Ramon Llull University*

*Eva Vicente, PhD, Universidad de Zaragoza*

*Sheida K. Raley, MA, University of Kansas*

*Karrie A. Shogren, PhD, FAAIDD, University of Kansas*

---

## BOARD #13

### Self-Determination of People with Intellectual Disability: A New Assessment Proposal in Spain

*Eva Vicente, PhD, Universidad de Zaragoza*  
*Veronica M. Guillen, PhD, Universidad de Cantabria*  
*Alba Ibáñez, PhD, Universidad de Cantabria*  
*Sergio Sanchez, PhD, Universidad de Burgos*  
*Cristina Mumbardo, MA, Universitat Ramon Llull*  
*Miguel Ángel Verdugo, PhD, FAAIDD, Universidad de Salamanca*

---

## BOARD #14

### The Development of the Self Advocacy Skills Inventory

*Richard Chapman, MA, University of South Florida*  
*Ardis Hanson, PhD, University of South Florida*  
*John Ferron, PhD, University of South Florida*  
*Anne Cranston-Gingras, PhD, University of South Florida*

---

## BOARD #15

### The Diagnosis of Autism Spectrum Disorder in Children with Visual Impairments: A Review

*J. Alyx Medlock, MS, University of New Mexico*

---

## BOARD #16

### The Use of the Support Intensity Scale in Children with Cerebral Palsy

*Virginia Aguayo, MA, Universidad de Salamanca*  
*Miguel Ángel Verdugo, PhD, FAAIDD, Universidad de Salamanca*  
*Maria Fernandez, MA, Universidad de Salamanca*  
*Marta Badía, PhD, Universidad de Salamanca*

---

## BOARD #17

### Toward the Development of a Cognitively Accessible Self-Report Measure to Assess Health-Related Quality Of Life (HRQoL-IDD) in Persons with Intellectual and Developmental Disabilities (IDD)

*Marjorie Pett, DSW, University of Utah*  
*Lauren Clark, PhD, University of Utah*  
*Beth Cardell, PhD, University of Utah*  
*Jia-Wen Guo, PhD, University of Utah*  
*Erin Johnson, PhD, University of Utah*

---

## BOARD #18

### Towards the Development of a Standardized Instrument for Assistive Technology Assessment and Selection in the Context of Information and Communication Technology

*Seok Soonhwa, PhD, Korea University*  
*Boaventrua Dacosta, PhD, Solers Research Group*

---

## AUTISM

---

## BOARD #19

### Applied Behavior Analysis and Behavioral Therapy for Adolescents with Autism Spectrum Disorder Transitioning into Adulthood

*Irvin Lien, Wayne State University School of Medicine*  
*Abid Ahmad, Wayne State University School of Medicine*

---

## BOARD #20

### Behavior Problems in Young Children with Autism Spectrum Disorder and Global Developmental Delay

*Amélie Terroux, Université du Québec à Montréal*  
*Mélina Rivard, PhD, Université du Québec à Montréal*  
*Zakaria Mestari, MS, Université du Québec à Montréal*  
*Diane Morin, PhD, FAAIDD, Université du Québec à Montréal*  
*Jacques Forget, DPS, Université du Québec à Montréal*

---

## BOARD #21

### Cognitive Profiles for Intellectual Disability, Autism Spectrum Disorder, and Dual-Diagnosed ASD/ID in Young Children

*Sarah Irby, PhD, University of Tennessee Health Sciences Center*  
*Lauren Gardner, PhD, University of Tennessee Health Sciences Center*  
*Phil Norfolk, MS, University of Tennessee Health Sciences Center*  
*Maryellen Verdoes, PhD, University of Tennessee Health Sciences Center*  
*Aimee Rovan, University of Tennessee Health Sciences Center*  
*Bruce Keisling, PhD, University of Tennessee Health Sciences Center*  
*Laura Murphy, EdD, FAAIDD, University of Tennessee Health Sciences Center*

---

## BOARD #22

### Collaborating with Community and Health Care Service Providers: A Community-Based Screening Program for Identifying Toddlers with Autism Spectrum Disorder

*Chloé St-Cyr, Université de Sherbrooke*  
*Melissa Coallier, MA, Université de Sherbrooke*  
*Audrée Jeanne Beaudoin, Université de Sherbrooke*  
*Marilyn Gagnon, Université de Sherbrooke*  
*Camille Gauthier-Boudreault, MA, Université de Sherbrooke*  
*Melanie Couture, PhD, Université de Sherbrooke*

---

## BOARD #23

### Evidence-Based Social Communication Interventions for Children with ASD

*Reem Muharib, MEd, University of North Carolina Charlotte*

---

## BOARD #24

### Experiences of Teachers Working with Students with Autism Spectrum Disorder about Stereotype Behaviors

*Cihan Akgul Hande, MA, Bierman ABA Autism Center*

---

## BOARD #25

### Executive Function in Preschoolers with Autism Spectrum Disorder

*Amélie Terroux, Université du Québec à Montréal*  
*Diane Morin, PhD, FAAIDD, Université du Québec à Montréal*  
*Catherine Mello, PhD, Pennsylvania State University*  
*Mélina Rivard, PhD, Université du Québec à Montréal*  
*Celine Mercier, PhD, Université de Montréal*

**BOARD #26**

**Improving Care for Children with Autism Spectrum Disorder and Their Families by Training Hospital Personnel**

*Jennifer Lucarelli, MD, Boston Children's Hospital*  
*Leah Welchons, PhD, The Kelberman Center*  
*Georgios Sideridis, PhD, Boston Children's Hospital*  
*Eugenia Chan, MD, Boston Children's Hospital*  
*Laura Weissman, MD, Boston Children's Hospital*

**BOARD #27**

**Presumptive Eligibility in South Carolina for ASD Early Intensive Behavioral Intervention: Policy, Practice and Results**

*David Rotholz, PhD, FAAIDD, University of South Carolina School of Medicine*  
*Anne Kinsman, PhD, Greenville Health System*  
*Jane Charles, MD, Medical University of South Carolina*  
*Kristie Musick, MA, South Carolina Department of Health and Human Services*  
*Kathi Lacy, PhD, South Carolina Department of Disabilities and Special Needs*

**BOARD #28**

**Systematic Review on the Prevalence of Challenging Behavior in Adolescents and Adults with Intellectual Disability or Autism Spectrum Disorder**

*Julie Beauchemin, Université du Québec à Montréal*  
*Diane Morin, PhD, FAAIDD, Université du Québec à Montréal*  
*Marc Lanovaz, PhD, Université de Montréal*

**BOARD #29**

**The Impact of Feeding Characteristics of Children with Autism Spectrum Disorders on Their Health-Related Quality of Life**

*Ahmet Fidan, MA, Sakarya University*  
*Bekir Fatih Meral, PhD, Sakarya University*

**BEHAVIORIAL SUPPORTS**

**BOARD #30**

**Countering Stigma as an Essential Strategy for Promoting Mental Health in People with ID/DD: Implications for Direct Practice and Service Delivery**

*Samantha Fuld, MSW, New York University*

**BOARD #31**

**Developmental Disabilities in Children: Etiology of Distress and Suicidality Leading to Emergency Room Visits**

*Tania Viviani, PsyD, Université du Québec à Montréal*  
*Diane Morin, PhD, FAAIDD, Université du Québec à Montréal*  
*Brian J. Greenfield, MD, McGill University*

**BOARD #32**

**Efficacy of Mindfulness-Based Cognitive Therapy and Dialectic Behavior Therapy in Treating Depression Among Individuals with Intellectual Disability**

*Karen Rutt, PsyD, Université du Québec à Montréal*  
*Julie Beauchemin, PsyD, Université du Québec à Montréal*  
*Catalina Mejia Cardenas, PsyD, Université du Québec à Montréal*  
*Diane Morin, PhD, FAAIDD, Université du Québec à Montréal*

**BOARD #33**

**Goal-Setting Interventions: What We Know and Future Directions**

*Sheida K. Raley, MA, University of Kansas*

**BOARD #34**

**Missed Diagnosis of Autism in Child Psychiatric Inpatients**

*Elizabeth Block, MD, University of Michigan*  
*Mohammad Ghaziuddin, MD, University of Michigan*

**BOARD #35**

**Optimizing Outcomes Through Person Centered and Evidence Based Practices**

*Nancy Pickett, Milwaukee Center for Independence*  
*Ryan Hanson, MA, Milwaukee Center for Independence*  
*Gina Wheeler, Milwaukee Center for Independence*

**BOARD #36**

**Preliminary Review: Psychiatric Services in an Agency Providing Residential & Day Supports to Individuals with Intellectual Disability**

*Stan Gutowski, PhD, Community Strategies of Massachusetts*  
*Terry Burch, MA, Community Strategies of Massachusetts*

**BOARD #37**

**Socio-Emotional Skills: Comparison Between Typical Children and Children with Intellectual Disability**

*Carole Légaré, Université du Québec à Montréal*  
*Diane Morin, PhD, FAAIDD, Université du Québec à Montréal*  
*Nathalie Poirier, PhD, Université du Québec à Montréal*

**BOARD #38**

**The Impact of Art Therapy on Health and Well-being**

*Katie Loux, MA, The Kennedy Center, Inc.*  
*Suzanne Sustaita, MA, The Kennedy Center, Inc.*  
*Kathryn Kelly, MA, The Kennedy Center, Inc.*

**BOARD #39**

**The Philadelphia Intensive Case Management Model of Support for People Who Have Dual Diagnosis**

*Rosie Staal, PsyD, Philadelphia Coordinated Health Care*  
*Melissa DiSipio, MSA, Philadelphia Coordinated Health Care*

**BOARD #40**

**The Role of Conflict and Stress on Mental Health in Adults with Intellectual Disability**

*Victoria Chavez, The Ohio State University*  
*Susan Havercamp, PhD, FAAIDD, The Ohio State University*

**BOARD #41**

**Understanding Suicide Risk: Developing a Specific Model of Suicide Risk for Persons Presenting with an ID or an ASD**

*Cécile Bardou, PhD, Université du Québec à Montréal*  
*Diane Morin, PhD, FAAIDD, Université du Québec à Montréal*  
*Xénia Halmov, MA, FAAIDD, Université du Québec à Montréal*  
*Brian Mishara, PhD, Université du Québec à Montréal*  
*Daphné Morin, MA, CIUSSS du Centre-Sud-de-l'Île-de-Montréal*  
*Julie Mérineau-Coté, PhD, CIUSSS du Centre-Sud-de-l'Île-de-Montréal*  
*Jonathan Weiss, PhD, York University*



# Electronic Documentation for I/DD Service Providers

Therap is the industry leader in providing electronic records and documentation in long-term care services for people with Intellectual and Developmental Disabilities. Therap is a web-based application suite that was designed to provide a comprehensive solution for the planning, documentation, reporting, communication and billing needs of organizations supporting people with Intellectual and Developmental Disabilities in home and community-based services (HCBS) and other settings. Therap currently supports over 400,000 individuals across the United States and internationally.

- ✓ Secure
- ✓ Person Centered Planning
- ✓ Outcomes Measurement/ Reporting
- ✓ Improved Quality of Supports
- ✓ Mobile Application/Access
- ✓ Real Time Notifications

### Individual Support

- Goal/Outcomes Tracking
- Support Plans
- Personal Finance
- Daily Notes
- Incident Reports
- Employment History
- Document Storage

### Billing Support

- Electronic Billing
- Unit Calculations
- Electronic Claim Submission
- Denied Claim Report
- Billing Data Summary
- Utilization Reports

### Staff Support

- Staff Ratio Tracking
- Shared Calendars
- Certifications
- Training Sessions & Sign-up
- HIPAA Secure Communication & Messaging

### Electronic Health Records

- MAR with Drug Database
- Nursing Care Plans
- Comprehensive Health Assessments
- Health Care Reports
- Appointments, Vital Signs, Intake/ Elimination, Lab Tests & more



**HIPAA Compliant**

(203) 596-7553

www.TherapServices.net

### For over 65 years,

The Arc has been the nation's leading advocate working alongside people with intellectual and developmental disabilities and their families over the arc of their lifetimes. Through a network of nearly 700 chapters, we provide:

- ▶ Public policy and individual advocacy
- ▶ Information and referral services
- ▶ Self-advocacy initiatives
- ▶ Residential support
- ▶ Education support
- ▶ Employment support
- ▶ Family support



# Achieve with us!

## DISABILITY RIGHTS ARE CIVIL RIGHTS.

JOIN OUR MOVEMENT TODAY!

[thearc.org](http://thearc.org)

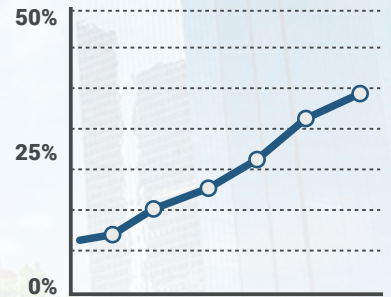


**EDUCATION****BOARD #42****A Case Study on a Wraparound Program for Students with Intellectual Disability in One Small Western MA Community***Heather Bish, EdD, Bay Path University***BOARD #43****A Comparison Study of Students with Borderline Abilities in the Schools***R. Lanai Jennings-Knotts, PhD, Marshall University  
Jennifer Perdue-Downward, MA, Marshall University  
Elizabeth Robinson, MA, Marshall University  
Charles Cooper, MA, Marshall University  
Christina Hare, EdS, Harrison County Schools  
Conrae Lucas-Adkins, PsyD, Marshall University  
Katelyn Wieger, Marshall University  
Sandra Stroebel, PhD, Marshall University***BOARD #44****A Meta-Analysis of the Effectiveness of Curriculums Designed to Increase Verbal Contributions Made by Students During IEP Meetings***Kelli Sanderson, MS, Vanderbilt University  
Samantha E. Goldman, PhD, Assumption College***BOARD #45****Developing Conceptual Understanding and Procedural Fluency in Algebra for High School Students with Intellectual Disability***Andrew Wojcik, Virginia Commonwealth University***BOARD #46****Making the UDL Framework Universal: Implications for Individuals with Intellectual Disability***Alisa Lowrey, PhD, University of Southern Mississippi  
Sean J. Smith, PhD, University of Kansas  
Colleen Thoma, PhD, FAAIDD, Virginia Commonwealth University  
LaRon Scott, PhD, Virginia Commonwealth University  
Alexandra Hollingshead, EdD, University of Idaho***BOARD #47****National Goals for Education: Improving Transition Services and Education for Youth with IDD***Colleen Thoma, PhD, FAAIDD, Virginia Commonwealth University  
Mary Morningstar, PhD, University of Kansas  
Dalun Zhang, PhD, FAAIDD, Texas A & M University  
Irina Cain, MEd, Virginia Commonwealth University***BOARD #48****Providing Supports to Include Students with Disability in General Education Contexts: Comparative Review of Literature Between America and Spain***Mayumi Hagiwara, MA, University of Kansas  
Antonio Amor, MA, Universidad de Salamanca  
Karrie A. Shogren, PhD, FAAIDD, University of Kansas  
James R. Thompson, PhD, FAAIDD, University of Kansas  
Miguel Á. Verdugo, PhD, FAAIDD, Universidad de Salamanca  
Kathryn Burke, MEd, University of Kansas  
Virginia Aguayo, MA, Universidad de Salamanca***BOARD #49****School-Based Evaluations for Students with ID: Is "Sufficiently Comprehensive" Good Enough?***R. Lanai Jennings-Knotts, PhD, Marshall University  
Elizabeth Robinson, MA, Marshall University  
Charles Cooper, MA, Marshall University  
Conrae Lucas-Adkins, PsyD, Marshall University  
Christina Hare, EdS, Harrison County Schools  
Karen Cummings, EdS, Kanawha County Schools  
Jennifer Perdue, MA, Marshall University***BOARD #50****Social Relationships Between Teachers and Students with Behavioral Needs Beyond Teachers' Perceptions: A Systematic Review of Research 2005–2015***Yunji Jeong, MA, University of New Mexico***BOARD #51****The Connectedness of Special Education Teachers: Identifying Special Education Teachers' Social Capital, Job Satisfaction, Job Self-Efficacy, and Teacher Autonomy in the School and Staffing Survey 2011-12***Kim W. Fisher, PhD, Arizona State University  
Andrea L. Ruppard, PhD, University of Wisconsin-Madison  
Meaghan McCollow, PhD, Central Michigan University  
Katie M. McCabe, MS, University of Wisconsin-Madison  
Tamela Fralin, MS, University of Wisconsin-Madison***BOARD #52****Transition to Adulthood by Young Adults in Special Education: Teacher Perception***Roneka Muhammed, University of California at Davis***EMPLOYMENT****BOARD #53****A Therapeutic-Relational Model of Transition Services for Those with Dual Diagnoses: Discover, Learn, Work!***Linda Rammler, PhD, University of Connecticut  
Michelle Ouimette, MBA, Ability Beyond, Inc.***BOARD #54****Career Development for Adults with Intellectual Disability: Pilot Outcomes from an Employment Program***Evan Dean, PhD, University of Kansas  
Kathryn Burke, MEd, University of Kansas***BOARD #55****Changes in Employment Skills and Quality of Life for Adults with Intellectual and Developmental Disabilities in a Cooperative Model of Employment***Lisa Whittingham, Brock University  
Frances Owen, PhD, Brock University  
Donato Tarulli, PhD, Brock University  
Maureen Connelly, PhD, Brock University  
Jennifer Hope, Common Ground Co-Operative  
Jennifer Li, PhD, Brock University  
Anne Readhead, MA, Brock University  
Courtney Bishop, MA, Hamilton Brant Behaviour Services*

# THE HEALTH RISK SCREENING TOOL

is used for early detection of health risk and destabilization in vulnerable populations such as those with I/DD.

**COME GET  
A DEMO  
AT OUR AAIDD BOOTH**



With each increase in Health Care Risk Level, the risk of early death increases.\*

Analysis clearly indicates that health risk, especially higher health risk scores are significant predictors of mortality.\*\*

\*Center for Outcome Analysis, J. Conroy, PhD and M. Roszkowski, PhD  
\*\*2015 Annual Mortality Report, GA DBHDD



Featured here are products from Health Risk Screening.

For more information contact Rob Refo: (877) 748-4778, rob@hrstonline.com

## THE FATAL FIVE SERIES

### eLearn Modules

Observe, Decide, Act!



The training and educational department of



The Fatal Five consists of five commonly identified causes of preventable death in persons with Intellectual and Developmental Disabilities and in persons who are aging.

Training modules available on the five conditions:

- ✓ Aspiration
- ✓ Bowel Obstruction
- ✓ GERD
- ✓ Seizures
- ✓ Infection/Sepsis

VISIT US AT OUR  
**Booth**

**BOARD #56**

**Parent and Teacher Agreement on Transition to Employment for Individuals with Intellectual and Developmental Disabilities**

*Kimberly A. Patton, MEd, University of Illinois at Urbana-Champaign*  
*Meghan M. Burke, PhD, University of Illinois at Urbana-Champaign*

**BOARD #57**

**The Myths and the Facts About Autism and Work in Portugal**

*José Nogueira, Universidade de Lisboa*

**FAMILIES & CAREGIVING**

**BOARD #58**

**Adult Siblings' Perceptions Toward Caregiving: A Synthesis of Literature Review**

*Chung Eun Lee, MA, University of Illinois at Urbana-Champaign*  
*Meghan M. Burke, PhD, University of Illinois at Urbana-Champaign*

**BOARD #59**

**Disability Within Families**

*Myles Maxey, Utah State University*  
*Troy E. Beckert, PhD, Utah State University*  
*Kathleen W. Piercy, PhD, Utah State University*

**BOARD #60**

**Double Special: A Qualitative Exploration of Work-Family Spillover Experience from Special Siblings with a Career in Special Education**

*Chun-Yu Chiu, PhD, National Taiwan Normal University*  
*Yi-Jung Liu, MEd, National Taipei University of Education*

**BOARD #61**

**Examining the Perspectives of Latino Families of Children with Autism Spectrum Disorder Toward Special Education Advocacy**

*Kristina Rios, MEd, University of Illinois at Urbana-Champaign*  
*Meghan Burke, PhD, University of Illinois at Urbana-Champaign*  
*Marlene Garcia, University of Illinois at Chicago*  
*Linda Sandman, University of Illinois at Chicago*  
*Brenda Lopez, University of Illinois at Urbana-Champaign*  
*Sandra Magaña, PhD, University of Illinois at Chicago*

**BOARD #62**

**Exploring Wellbeing Among Caregivers: A Comparison of Paid Staff and Family Members in the Caregiving Role**

*Trent Call, Oklahoma State University*  
*Kami L. Gallus, PhD, Oklahoma State University*  
*Jennifer Jones, PhD, Oklahoma State University*

**BOARD #63**

**Family Perspectives on the Domains of Future Planning for Young Adults with Intellectual and Developmental Disabilities: A Qualitative Study**

*Katherine Wu, Children's Hospital of Philadelphia*  
*Symme Trachtenberg, MSW, Children's Hospital of Philadelphia*  
*Natalie Stollon, MSW, MPH, Children's Hospital of Philadelphia*  
*Angela Liang, Children's Hospital of Philadelphia*  
*Sujatha Changolar, Children's Hospital of Philadelphia*  
*Jeannette Newman, PhD, Children's Hospital of Philadelphia*  
*Sophia Jan, MD, MSHP, Children's Hospital of Philadelphia*

**BOARD #64**

**Family Quality of Life in Families with Young Children with Autism Spectrum Disorder: Highlights of Three Studies in Quebec**

*Mélina Rivard, PhD, Université du Québec à Montréal*  
*Celine Mercier, PhD, Université de Montréal*  
*Amelie Terroux, Université du Québec à Montréal*  
*Catherine Mello, PhD, Pennsylvania State University*

**BOARD #65**

**Future Planning for Adults with Intellectual and Developmental Disabilities: Parent and Sibling Perspectives**

*Angela Liang, Children's Hospital of Philadelphia*  
*Natalie Stollon, MSW, MPH, Children's Hospital of Philadelphia*  
*Sophia Jan, MD, MSHP, Children's Hospital of Philadelphia*  
*Katherine Wu, Children's Hospital of Philadelphia*  
*Sujatha Changolar, University of Pennsylvania*  
*Jeannette Newman, PhD, Philadelphia Department of Behavioral Health and Intellectual Disability Services*  
*Symme Trachtenberg, MSW, Children's Hospital of Philadelphia*

**BOARD #66**

**How Faith-Based and Community Respite Opportunities Support Family Wellness: Findings from TakeFIVE Respite Program**

*Sally Gould-Taylor, PhD, Temple University*  
*Mary Jo Alimena Caruso, MEd, The Watson Institute*  
*Mary Jones-Furlow, MSW, Temple University*  
*Denise Beckett, ThM, Temple University*

**BOARD #67**

**How Families Create Useful Mealtime Routines and Meaningful Rituals**

*Sarah Curtiss, PhD, University of Illinois at Urbana-Champaign*

**BOARD #68**

**Latino Family Caregivers of People with Intellectual and Developmental Disabilities: Disparities in Family Support**

*Catherine Arnold, MS, University of Illinois at Chicago*

**BOARD #69**

**Managing Family Dynamics: Communication Strategies for Families with a Child with Intellectual Disability—Breaking Down Societal Stigmas**

*Allison Cox, MA, University of Nevada, Las Vegas*

---

## BOARD #70

### **Meaning Making Among Families of Individuals with Intellectual and Developmental Disabilities: Coping with Transitions Across the Lifespan**

*Samantha Johnson, Oklahoma State University  
Jennifer L. Jones, PhD, FAAIDD, Oklahoma State University  
Kami L. Gallus, PhD, Oklahoma State University*

---

## BOARD #71

### **Peer Support as a Catalyst: Development of a Theory of Parental Adaptation**

*Robin Dodds, PhD, University of Illinois at Chicago  
George Singer, PhD, University of California at Santa Barbara*

---

## BOARD #72

### **Perspectives of First-Generation Indian Immigrant Parents on Changes that Would Help Them Cope More Effectively with Their Child's Developmental Disabilities**

*Kori Schrandt, Texas Christian University  
Aesha John, PhD, Texas Christian University*

---

## BOARD #73

### **Predictors of Resilience in Families of Adults with Intellectual and Developmental Disabilities Following Deinstitutionalization**

*Jillian A. Caldwell, Oklahoma State University  
Jennifer L. Jones, PhD, FAAIDD, Oklahoma State University  
Kami L. Gallus, PhD, Oklahoma State University*

---

## BOARD #74

### **Professionals' Perspectives on Partnering with Families Caring for an Individual with an Intellectual and Developmental Disabilities**

*Kelsi Sulgrove, Texas Christian University  
Aesha John, PhD, Texas Christian University*

---

## BOARD #75

### **Providing Parent to Parent Support to Traditionally Underserved Families**

*Robin Dodds, PhD, University of Illinois at Chicago  
Louisa Wood, PhD, University of California at Santa Barbara  
Laquita Spivey-Montgomery, PhD, University of California at Santa Barbara*

---

## BOARD #76

### **Relations of Parent/Caregiver Weight and Child Weight Status in a Sample of Young Children with Developmental Delay**

*Megan MacDonald, PhD, Oregon State University  
Laura Lee McIntyre, PhD, FAAIDD, University of Oregon  
Greg Heinonen, Oregon State University*

---

## BOARD #77

### **Supports for People with IDD who Are Parenting**

*Wendy Jones, MSW, Georgetown University  
Clare Williamson, Georgetown University*

---

---

## BOARD #78

### **Survey of the Needs of Quebec Families with a Child Diagnosed with Global Developmental Delay**

*Justine Grenier-Martin, Université du Québec à Montréal  
Méline Rivard, PhD, Université du Québec à Montréal*

---

## BOARD #79

### **Transition Bootcamp Conference and Transition Booster Sessions: Supporting Families and Professionals in the Transition Journey to Adult Life in the Community for Youth/Young Adults who have Developmental Disabilities**

*Ilka Riddle, PhD, Cincinnati Children's Hospital Medical Center*

---

## BOARD #80

### **Transition of Persons with Developmental Disabilities (DD) from Parental to Sibling Co-Residential Care: Effects on Sibling Caregiver Well-Being and Family Functioning**

*Richard Glaesser, MSW, University of South Florida  
Elizabeth Perkins, PhD, RNLD, FAAIDD, University of South Florida  
Nan Park, PhD, University of South Florida*

---

## HEALTH & WELLNESS

---

## BOARD #81

### **An Integrative Approach to Foster Health and Wellness in the School, Residential and Community Settings for Special Needs Students**

*Doreen Mangini, PhD, The Guild for Human Services  
Erin Sweeney, MA, The Guild for Human Services  
Kevin Jean, The Guild for Human Services  
Matt Coffey, MA, The Guild for Human Services  
Thomas Lucia, The Guild for Human Services*

---

## BOARD #82

### **A Winning Approach to Improving Health Care for People with Intellectual Disability**

*Marcia Stickel, University of Wisconsin-Madison  
William MacLean, PhD, University of Wisconsin-Madison*

---

## BOARD #83

### **Considering Quality-of-Life in End-of-life Decisions for Severely Disabled Children**

*Ilse Zaal-Schuller, MD, Academic Medical Centre Amsterdam  
Dick L. Willems, PhD, Academic Medical Centre Amsterdam  
Frans V. Ewals, MD, Erasmus Medical Centre Rotterdam  
Johannes B. van Goudoever, PhD, Academic Medical Centre Amsterdam  
Mirjam A. de Vos, PhD, Academic Medical Centre Amsterdam*

---

## BOARD #84

### **Fatigue in Patients with Neurodevelopmental Disability**

*David Coulter, MD, FAAIDD, Boston Children's Hospital*

---

## BOARD #85

### **Health Behaviors of Teenagers and Adults with an Intellectual Disability**

*Julie Maltais, Université du Québec à Montréal  
Caroline Faust, Université du Québec à Montréal  
Diane Morin, PhD, FAAIDD, Université du Québec à Montréal*

---

**BOARD #86****Health Care Access for Adults with Intellectual and Developmental Disabilities: A Review of the Literature**

Heather Williamson, DrPH, Northern Arizona University  
 Graciela M. Contreras, Northern Arizona University  
 Erica S. Rodriguez, Northern Arizona University  
 Jennifer M. Smith, Northern Arizona University  
 Elizabeth Perkins, PhD, RNLD, FAAIDD, University of South Florida

**BOARD #87****Healthy Living: Positive Control**

Sara Hansen, EdD, University of South Dakota  
 David Horton, MSSW, Marriage and Family Therapist  
 Barbara Sapharas, MA, Consultant

**BOARD #88****HealthMatters, Maryland! A Community of Practice for Health to Create Health Friendly Environments for People with Intellectual and Developmental Disabilities**

Jennifer Eastman, MBA, Maryland Department of Disabilities  
 Beth Marks, PhD, University of Illinois at Chicago  
 Jasmina Sisirak, PhD, University of Illinois at Chicago

**BOARD #89****Literature Review on the Relationship between Sport and Health Among People with Intellectual Disability**

Caroline Faust, Université du Québec à Montréal  
 Diane Morin, PhD, FAAIDD, Université du Québec à Montréal

**BOARD #90****Metabolic Syndrome and Health Impact**

Sherry Neal, HRS, Inc.

**BOARD #91****Nutrition is for Everyone**

Jessica A. Minor, MPP, Association of University Centers on Disabilities  
 Adriane K. Griffen, DrPH, Association of University Centers on Disabilities

**BOARD #92****Parents of Children with Significant Disability Describe Their Child's Eating Habits**

Brianna Grumstrup, MEd, University of Nevada, Reno  
 MaryAnn Demchak, PhD, University of Nevada, Reno

**BOARD #93****Promoting Physical Activity in Adults with Special Needs via Individualized Hiking, Walking, and Exercise Programs Along with Enhancement of Staff Education**

Allison Cochran, DPT, Western Carolina University  
 Kaylan Lance, DPT, Western Carolina University

**BOARD #94****Systematic Review of Healthcare Disparities for Children with Autism Spectrum Disorder: An Examination of Access to Care, Service Utilization, and Satisfaction**

Tara Benninger, MA, The Ohio State University  
 Andrea Witwer, PhD, The Ohio State University

**BOARD #95****The Fatal 5: The Five Most Common Causes of Death in an IDD Population**

Karen Green-McGowan, HRS, Inc.

**BOARD #96****The Right Care Now Project Monitoring System: An Introduction**

Susan L. Abend, MD, The Right Care Now Project, Inc.  
 Heather Keegan, Community Resources for Justice  
 Terry Burch, MA, Community Resources for Justice  
 Michelle McCormick, Community Resources for Justice  
 Paula Ravin MD, The Right Care Now Project Inc.

**BOARD #97****Tobacco Cessation and People with Disabilities: The LIFT Program**

Erica Coleman, MS, University of Cincinnati  
 Ilka Riddle, PhD, University of Cincinnati  
 Susan Havercamp, PhD, FAAIDD, The Ohio State University  
 Emily Yang, MPH, The Ohio State University  
 David Ellsworth, MPH, Ohio Department of Health

**BOARD #98****Treating Individuals with Intellectual Disability in the Acute Care Hospital: Barriers and Strategies for Successful Outcomes**

Julie Mangeot, Consultant

**BOARD #99****What Do We Know About Health Promotion for Youth with Intellectual Disability?**

Marie Grandisson, PhD, Laval University  
 Elise Milot, PhD, Laval University  
 Marie-Eve Lamontagne, PhD, Laval University  
 Raphaëlle Beaudoin, MS, Laval University  
 Anne-Sophie Allaire, MS, Laval University

**BOARD #100****Wholistic Care and Spirituality: Come and Worship Together!**

Susan Lindberg Haley, MA, MAMS, All Right Ministry and Lutheran Church of Framingham  
 David Defreeze, MDiv, PhD, Mosaic

**HOME & COMMUNITY BASED SUPPORTS****BOARD #100****A Predictive Macro Model of Support Services Use in Person-Centered Planning: An Application in the Italian Context of Flexible Bivariate Count Regression Models**

Paolo Bianchi, PhD, University of Nottingham Ningbo China  
 Marco Lombardi, MS, University College Gent  
 Luigi Croce, MD, Università Cattolica del Sacro Cuore  
 Roberta Speciale, Anffas Onlus  
 Antonio Caserta, Anffas Onlus

---

## BOARD #101

### How Have the Residential Settings Changed for People with IDD and How Does Institutionalization Compare Between the Overall US Population and People with IDD?

Heidi Eschenbacher, PhD, University of Minnesota  
Sheryl Larson, PhD, FAAIDD, University of Minnesota

---

## BOARD #102

### Vanderbilt Lend Consortium: Making Professional Students into Community Providers for Individuals with Disabilities

Tanya Cable, MEd, East Tennessee State University  
Cynthia Chambers, PhD, East Tennessee State University

---

## BOARD #103

### Quality of Life of People with Profound Developmental Disabilities Across Residential Settings

Kristin Korinko, PhD, Sunrise Community, Inc.

---

## BOARD #104

### Support Structures for Community Living: Current Landscape and Future Directions

Irina Cain, PhD, Virginia Commonwealth University  
Colleen Thoma, PhD, Virginia Commonwealth University  
Lauren Puglia, MEd, Virginia Commonwealth University

---

## BOARD #105

### The Belonging Model: How it's Unique Qualities Support Lifelong Meaning for Caretaker and Supported Individuals

Leland Sapp, MA, Peaceful Living

---

## BOARD #106

### Understanding the Impact of Lifesharing on Quality of Life: Findings from Independent Monitoring for Quality Data in Pennsylvania

Sally Gould-Taylor, PhD, Temple University  
Celia Feinstein, MA, FAAIDD, Temple University  
Jim Lemanowicz, FAAIDD, Temple University  
Mary Kay Cunningham, MSW, Temple University  
Guy Caruso, PhD, Temple University  
Ross Whiting, PhD, Temple University  
Ariel Mankin, MEd, Temple University

---

## POLICY

---

## BOARD #107

### A Value-Critical Policy Analysis of Atkins v. Virginia: Implications for Health and Well-being in the Criminal Justice System

Lauren Ricciardelli, MSW, University of Georgia  
Stephen McGarity, MSW, University of Georgia

---

## BOARD #110

### Using Usability Testing in the Creation of the Interactive Timeline on International Supported Decision-Making Policy and Practices

Hatice Uyanik, PhD, University of Kansas

---

## BOARD #111

### What Are You Doing with My Records? The Use of Medical Records for Research in Intellectual and Developmental Disabilities

Anne Wheeler, PhD, RTI International  
Melissa Raspa, PhD, RTI International  
Rebecca Moultrie, RTI International  
Laura Wagner, MPH, RTI International  
Sara Andrews, MPH, RTI International  
Anne Edwards, RTI International  
Alex Alvarez, University of North Carolina at Chapel Hill  
Lauren Turner-Brown, PhD, University of North Carolina at Chapel Hill

---

## QUALITY OF LIFE

---

## BOARD #112

### Is Autism Spectrum Disorder Linked to Worse Quality of Life in Children with Intellectual Disability?

Laura E. Gómez, PhD, Universidad de Oviedo  
Victor Arias, PhD, Universidad de Talca  
Lucia Morán, Universidad de Oviedo  
Maria Ángeles Alcedo, PhD, Universidad de Oviedo  
Patricia Navas, PhD, Universidad de Salamanca  
Miguel Á. Verdugo, PhD, FAAIDD, Universidad de Salamanca

---

## BOARD #113

### All Means All: Identifying Disparities Experienced by Individuals with Significant Intellectual Disability

Patricia Navas, PhD, Universidad de Salamanca  
Miguel Á. Verdugo, PhD, FAAIDD, Universidad de Salamanca  
Sergio Martínez-Torres, MA, Universidad de Salamanca

---

## BOARD #114

### Celebrating 30 Years of the NJC and Communication Advocacy: Empowering Individuals with Severe Disabilities, Families, and Stakeholders

MaryAnn Ronski, PhD, Georgia State University  
Rose A. Sevcik, PhD, Georgia State University

---

## BOARD #115

### Culture, Health, and Education: Cross-Cultural Attitudes Regarding Disability

Gabriela Walker, PhD, EdS, University of South Dakota

---

## SELF-DETERMINATION, SELF-ADVOCACY & SOCIAL INCLUSION

---

## BOARD #116

### Being a Teacher and a Friend: Enactment of Dual Roles by Young Adult Peer Mentors with Intellectual and Developmental Disabilities

Ariel Schwartz, MS, Boston University  
Jessica Kramer, PhD, Boston University

**BOARD #117****Building Social Connections: Individual- and School-level Factors That Impact Social Capital Access**

*Kimberly Fisher, PhD, Arizona State University*  
*Yi Zheng, PhD, Arizona State University*  
*Hyejin Park, PhD, Arizona State University*

**BOARD #118****Community Living for All: Perspectives of People with Developmental Disabilities on Transitioning from Institutions to the Community**

*Katherine McDonald, PhD, Syracuse University*  
*Nicole Conroy, PhD, University of Vermont*

**BOARD #119****Examining the Link Between Supports and Outcomes: The Mediating Role of Self-Determination for Adults Receiving Long Term Services and Supports**

*Drew Egli, Oklahoma State University*  
*Jennifer Jones, PhD, FAAIDD, Oklahoma State University*  
*Kami Gallus, PhD, Oklahoma State University*

**BOARD #120****Experiences of Adults with Intellectual Disability with Community Participation: Results From a Photo Voice Study**

*Lieke van Heumen, PhD, University of Illinois at Chicago*  
*Chih-Chieh Hsu, MS, University of Illinois at Chicago*  
*Donna Ennis, MSW, Envision Unlimited*  
*Valerie Lilley, DePaul University*  
*Ana Zalka, Envision Unlimited*  
*Jerome Gill, Envision Unlimited*  
*Allison Killingsworth, Envision Unlimited*  
*Scott Winn, Envision Unlimited*

**BOARD #121****Facilitators and Barriers to Community Participation of People with Intellectual and Developmental Disabilities**

*Carli Friedman, PhD, The Council on Quality and Leadership*  
*Mary Kay Rizzolo, PhD, The Council on Quality and Leadership*

**BOARD #122****Friendship and People with Intellectual and Developmental Disabilities: Barriers and Facilitators**

*Carli Friedman, PhD, The Council on Quality and Leadership*  
*Mary Kay Rizzolo, PhD, The Council on Quality and Leadership*

**BOARD #123****Literacy: A Very Possible, Necessary Tool for Inclusion and Integration**

*Thomas Gilbert, MA, MSPH, NCC Solutions, Inc.*  
*Monica Gordon Pershey, EdD, Cleveland State University*

**BOARD #124****Promoting Health and Well-Being Through Valued Social Roles**

*Guy Caruso, PhD, FAAIDD, Temple University*

**BOARD #125****Promoting Peer Interaction in Preschool Children with IDD: A Classroom-Embedded Intervention Model**

*Climent Giné, PhD, FAAIDD, Universitat Ramon Llull*  
*Cecilia Simón, Universidad Autónoma de Madrid*  
*Margarita Cañadas, Universidad Católica de Valencia*  
*Ignasi Ivern, Universitat Ramon Llull*  
*Gema Paniagua, Equipo de Atención Temprana Leganés*  
*David Simó-Pinatella, Universitat Ramon Llull*  
*Mariona Dalmau, Universitat Ramon Llull*  
*Joana M. Mas, Universitat Ramon Llull*  
*Miguel Martínez, Equipo de Atención Temprana Leganés*  
*Cristina Mumbardó-Adam, Universitat Ramon Llull*

**BOARD #126****Self-Advocates Speaking Out: An Exploratory Investigation to Understand Specific Needs of Individuals with Intellectual and Developmental Disabilities**

*Jessica Hai, University of California at Santa Barbara*  
*Lindsay Glugatch, University of California at Santa Barbara*  
*Mian Wang, PhD, University of California at Santa Barbara*

**BOARD #127****Social Participation of Children Presenting an Autism Spectrum Disorder (ASD) or Intellectual Disability (ID): Reasons Given by Parents for Not Frequenting Public Spaces**

*France Beaugregard, PhD, Université de Sherbrooke*  
*Camille Gauthier-Boudreault, MA, Université de Sherbrooke*  
*Laure-Hélène Gagné-Deland, Université de Sherbrooke*  
*Mélanie Couture, PhD, Université de Sherbrooke*

**BOARD #128****The Meaning of Social Inclusion for Students with and Without Intellectual Disability: A Qualitative Study**

*Roy McConkey, PhD, Ulster University*  
*Cheryl Peng, Special Olympics International*  
*Lindsay DuBois, PhD, Special Olympics International*

**SEXUALITY****BOARD #129****Sex and Relationships: Voices of Adults with IDD**

*Rhonda Black, EdD, University of Hawaii at Mānoa*

**BOARD #130****The Rainbow Support Groups, Support Groups Run by Self-Advocates who are LGBTQI**

*Pauline Bosma, Rainbow Support Group*  
*James Mullin, MEd, FAAIDD, Retired*  
*Kelly Murphy, Rainbow Support Group*

**TECHNOLOGY****BOARD #131****Comprehensive Virtual Database for Professionals Working with Children with Developmental Disabilities**

*Reem Muharib, MEd, University of North Carolina Charlotte*

---

## BOARD #132

### Feasibility of Electronic Peer Mentoring for Transition-Age Youth and Young Adults with Intellectual and Developmental Disabilities

Jessica Kramer, PhD, Boston University  
Cathryn Ryan, MS, The Bridge of Central Massachusetts  
Ariel Schwartz, MS, Boston University

---

## BOARD #133

### Making a Case for Investigating Teacher Perceptions of Barriers to Use of Assistive Technology: A Literature Review

Lauren Puglia, MEd, Virginia Commonwealth University  
Andrew Wojcik, MEd, Virginia Commonwealth University

---

## BOARD #134

### Mobile Game-Based Learning: Promoting Active Play, Social Interaction, and Collaboration in Real-World Settings

Soonhwa Seok, PhD, Korea University  
Boaventura DaCosta, PhD, Solers Research Group

---

## BOARD #135

### The Impact of "Off-Loading" on the Acquisition of Academic Content by Students with Intellectual and Developmental Disabilities in Multimedia Instruction

J. Matt Jameson, PhD, University of Utah  
John McDonnell, PhD, University of Utah  
Jessica Bowman, MEd, University of Utah  
Olivia Coleman, MEd, University of Utah  
Joanna Ryan, MEd, University of Utah

---

## BOARD #136

### Transportation for Individuals with Intellectual and Developmental Disabilities: Exploring Options with a Universal Design for Transition Framework to Map Community Supports

Andrew Wojcik, Virginia Commonwealth University  
Allison D'Aguilar, MEd, Virginia Commonwealth University  
Coleen Thoma, PhD, FAAIDD, Virginia Commonwealth University  
Irina Caine, Virginia Commonwealth University  
Lauren Puglia, MEd, Virginia Commonwealth University

---

## BOARD #137

### Video-Based Interventions to Support Job Search Skills for Individuals with ASD

Vidya Munandar, MSE, University of Kansas

---

## BOARD #138

### With, Not For: Participation of People with Intellectual Disability in the Development of Assistive Technologies

Michal Kosiedowski, Poznan Supercomputing and Networking Center  
Lucja Cofta, Stowarzyszenie Na Tak  
Natalia Marciniak-Madejska, Stowarzyszenie Na Tak  
Zbigniew Wozniak, PhD, Adam Mickiewicz University  
Maciej Bogdanski, Poznan Supercomputing and Networking Center  
Bartosz Gluszak, Poznan Supercomputing and Networking Center  
Katarzyna Pawelczak, PhD, Adam Mickiewicz University  
Adrianna Domachowska-Mandziak, Stowarzyszenie Na Tak

---

## TRANSITION

---

## BOARD #139

### Boundaries and Relationships: The How and Why of Teaching Sexuality to Children, Teens, and Young Adults with Intellectual Disability

Maggie Rice, MEd, Whole Children and Milestones

---

## BOARD #140

### How Can Transition to Adult Life Be Improved? Perspective of Parents of Young Adults with Severe to Profound Intellectual Disability

Camille Gauthier-Boudreault, MA, Université de Sherbrooke  
Frances Gallagher, PhD, Université de Sherbrooke  
Mélanie Couture, PhD, Université de Sherbrooke

---

## BOARD #141

### Post-School Outcomes for Youth with Deaf-Blindness

Jerry Petroff, PhD, The College of New Jersey  
Nadya Pancsofar, PhD, The College of New Jersey  
Jennifer Caceres, The College of New Jersey  
Grace Lazarus, The College of New Jersey  
Victoria Stoner, The College of New Jersey

---

## BOARD #142

### Self-Disclosure and the Development of Connection in Peer Mentoring Relationships for Transition-Age Youth and Young Adults with Intellectual and Developmental Disabilities

Cathryn Ryan, MS, The Bridge of Central Massachusetts  
Ellen Cohn, ScD, Boston University  
Jessica Kramer, PhD, Boston University

---

## BOARD #143

### The Effectiveness of Multiple Exemplars in Inclusive Embedded Instruction in Supporting the Generalization of Academic Skills

J. Matt Jameson, PhD, University of Utah  
John McDonnell, PhD, University of Utah  
Jessica Bowman, MEd, University of Utah  
Olivia Coleman, MEd, University of Utah  
Joanna Ryan, MEd, University of Utah

---

## BOARD #144

### Transitions: Where the Rubber Meets the Road

Tammy Carroll, PhD, Benchmark Human Services  
Ruby Jade Lewis, MEd, Benchmark Human Services  
Heather Macbeth, MS, Benchmark Human Services  
Andrew Beyrer, MSW, Benchmark Human Services  
Ginger Sunbom, MS, Benchmark Human Services

---

## WORKFORCE, SYSTEMS, & ORGANIZATIONAL ISSUES

---

## BOARD #145

### Agency Health and Wellbeing: How Leaders are Transforming Agencies While Assuring Organizational Sustainability

Caitlin Bailey, MS, University of Delaware  
Juliann Emory, University of Delaware  
Steven Eidelman, MSW, MBA, FAAIDD, University of Delaware



**BOARD #146**

**Developing a Partnership Among Universities, Providers and Self-Advocates to Preserve the History of Intellectual Disability**

*Elliot W. Simon, PhD, Elwyn*

**BOARD #147**

**In the Field with Elizabeth Kite: Recovering the Voices of an Overlooked Architect of Intelligence Tests and the Families She Tested**

*Brent Ruswick, PhD, West Chester University of Pennsylvania*

**BOARD #148**

**Intellectual Disability and Mental Models: An Organizational Perspective**

*Isabelle Assouline, MEd, Université du Québec à Montréal*

*Diane Morin, PhD, FAAIDD, Université du Québec à Montréal*

**BOARD #149**

**The Complexities of Close Quarters: Affection and Disruption in the History of American Institutionalization**

*Chelsea D. Chamberlain, MA, University of Pennsylvania*

**BOARD #150**

**The NADD Accreditation and Certification Program (ACP): Raising the Bar in Workforce Development**

*Robert Fletcher, DSW, NADD*

**LINTONS**  
Food Service Management

*Nourishing those we serve.*

1-866-Lintons      LintonsFoodService.com



**HELPING PEOPLE TO HAVE  
A GOOD LIFE AT HOME AND  
IN THE COMMUNITY.**

Empowering people is at the core of Living Innovations. We aim to achieve this everyday through our two foundational services:



**SHARED LIVING**

(Community Companion Homes)

This least restrictive community based residential choice empowers people to make choices about where and with whom they live and to receive ongoing personalized support in a nurturing family setting.

**COMMUNITY CONNECTIONS**

We believe in strengthening communities through the inclusion of all people. This service is completely community-based and utilizes community resources to find educational, social, and employment opportunities.

-  We have offices throughout Rhode Island, Connecticut, Maine, and New Hampshire.
-  For more information on Living Innovations and our services please visit us online at [LivingInnovations.com](http://LivingInnovations.com)





PROVIDING HOUSING & RELATED  
HEALTHCARE FACILITIES FOR  
PEOPLE WITH DISABILITIES

1300 Homes | 40 States | 5000 Served

**SCIOTO PROPERTIES IS PROUD TO ATTEND THE  
AAIDD CONFERENCE. STOP BY AND SEE US!**



SCIOTO.COM | 1.800.930.2892



**rtc** on community living  
INSTITUTE on COMMUNITY INTEGRATION | UNIVERSITY OF MINNESOTA

Promoting the inclusion and full participation of people with disabilities in the communities of their choice.



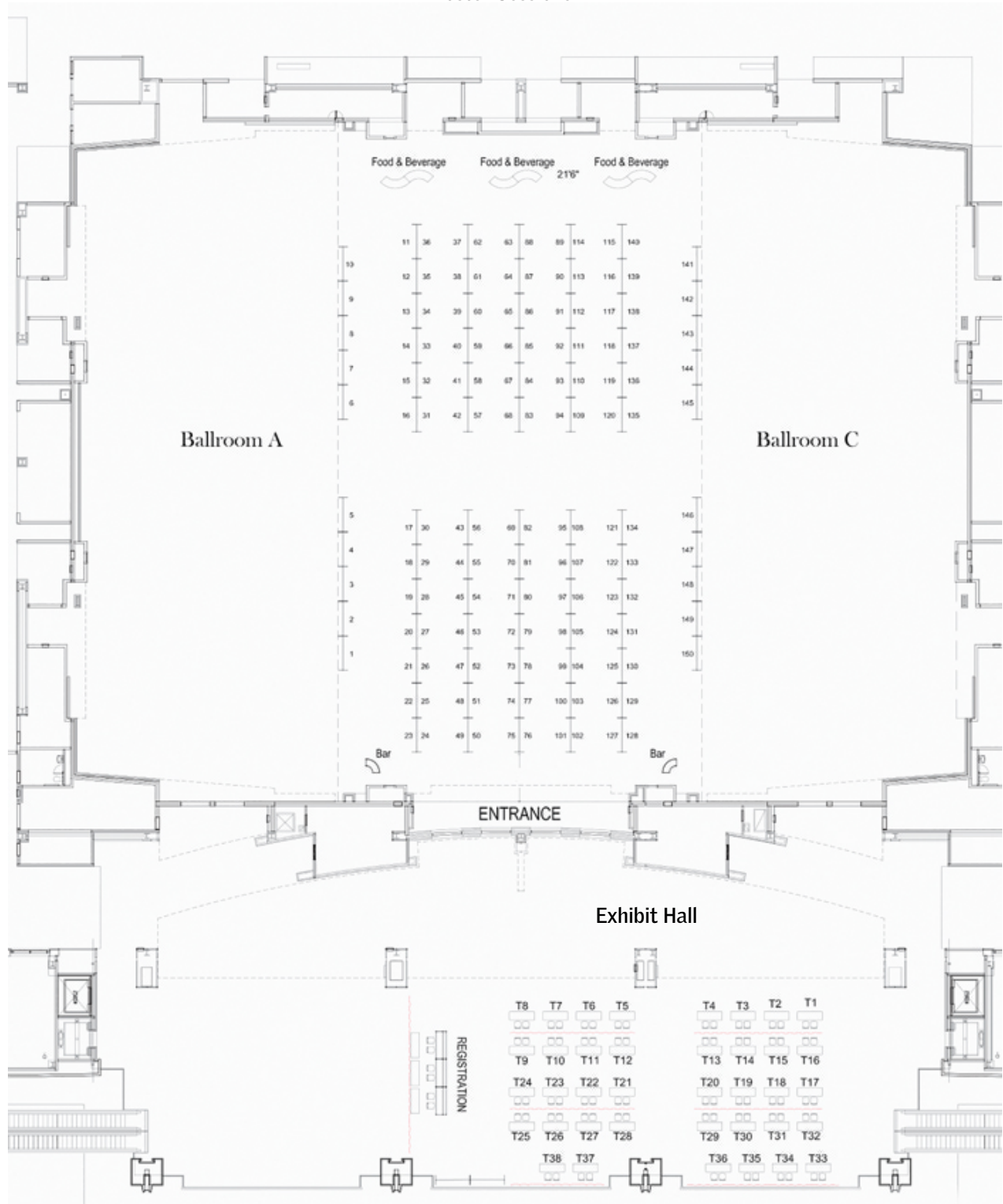
## Facilitating accurate and individualized documentation

CareTracker® helps improve documentation compliance and accuracy while simplifying workflow processes for providers for the developmentally disabled.



[discovercaretracker.com](http://discovercaretracker.com)

Poster Sessions



We invite you to visit our exhibitors and contact those companies whose products or services interest you. The exhibits are located in Ballroom Foyer of the Convention Center.

**ANCOR**

**TABLE #25**

1101 King Street, Suite 380, Alexandria, VA 22314  
 Contact: Jerri McCandless  
 Phone: 703-535-7850  
 Email: jmccandless@ancor.org  
 Website: www.ancor.org

The American Network of Community Options and Resources (ANCOR) is a national trade association representing more than 1,200 private providers of community living and employment supports and services to more than 800,000 individuals with disabilities with a workforce that's over half a million strong. ANCOR advocates for the crucial role private providers play in enhancing and supporting the lives of people with disabilities and their families.

**THE ARC NEW LONDON COUNTY**

**TABLE #22**

52 Sacred Heart Drive, Groton, CT 06340  
 Contact: Thomas Murphy  
 Phone: 860-235-6910  
 E-mail: tmurphy@thearcncl.org  
 Web: www.thearcncl.org

The Arc New London County has established a cookie-baking microbusiness that provides real world work experience at competitive wages. Purchase a box of our classic crunch chocolate chip cookies to take home and sign up to receive a notice when our online ordering platform goes live!

**BAYPATH UNIVERSITY**

**TABLE #31**

588 Longmeadow Street, Longmeadow, MA 01106  
 Contact: Patricia Melenkivitz  
 Phone: 413-565-1332  
 Email: pmelenkivitz@baypath.edu  
 Website: www.graduate.baypath.edu

The Graduate School at Bay Path University offers over 25 degrees and certificates. Our education and psychology degrees offer relevant curriculum and are taught by leading practitioners in the field and include: MS/ED/EdS in Special Education, MS in Clinical Mental Health Counseling, and many others.

**BEHAVIOR ANALYSIS ONLINE—UNIVERSITY OF NORTH TEXAS (BAO)**

**TABLE #29**

1155 Union Circle, #310919, Denton, TX 76203  
 Contact: Scott Solomon  
 Phone: 214-504-5554  
 Email: scott.solomon@unt.edu  
 Website: www.bao.unt.edu

Behavior Analysis Online delivers high-quality behavior analysis education using advanced instructional technologies to help people and organizations across the globe.

**SPONSOR**

**BENCHMARK HUMAN SERVICES**

**TABLE #1**

8515 Bluffton Road, Ft. Wayne, IN 46809  
 Contact: Jeff Cross  
 Phone: 615-477-6040  
 Email: jcross@benchmarkHS.com  
 Website: www.benchmarkHS.com

Benchmark Human Services provides direct services and consulting to reduce cost and increase quality for public agencies serving persons with disabilities and mental illness, and is recognized as a national leader in supporting persons with complex behavioral and medical challenges living in the community. *Benchmark—Where People Thrive!*

**CAPGROW PARTNERS**

**TABLE #8**

320 W. Ohio, Suite 650N, Chicago, IL 60654  
 Contact: Dené Rasch  
 Phone: 773-329-4678  
 Email: drasch@capgrowpartners.com  
 Web: www.capgrowpartners.com

CapGrow Partners can help organizations provide safe and appropriate housing for the individuals they serve. By assuming, all of the real estate-related responsibilities and financing risk associated with acquiring community-based homes. We enable organizations to focus greater time and energy on continuing to improve the lives of those they support.

**SPONSOR**

**CARF INTERNATIONAL**

**TABLE #2**

6951 East Southpoint Road, Tucson, AZ 85756  
 Contact: Pete Hathaway  
 Phone: 888-281-6531 ext 7113  
 E-mail: phathaway@carf.org  
 Website: www.CARF.org

CARF International is an independent, nonprofit organization focused on advancing the quality of services. Through accreditation, CARF assists service providers in improving the quality of their services, demonstrating value, and meeting internationally recognized organizational and program standards.

**SPONSOR**

**CERNER CORPORATION**

**TABLE #4**

2800 Rockcreek Parkway, Kansas City, MO 64117  
 Contact: Ashley Kent  
 E-mail: Ashley.kent@cerner.com  
 Website: www.cerner.com

Cerner's health information technologies connect people and systems at more than 25,000 provider facilities worldwide. Recognized for innovation, Cerner offers solutions and services for health care organizations of every size. Together with our clients, we are creating a future where the health care system works to improve the well-being of individuals and communities.

## THE COLEMAN INSTITUTE FOR COGNITIVE DISABILITIES

**SPONSOR**

### TABLE #14

3825 Iris Avenue, Suite 200, Boulder, CO 80301  
Contact: Jennifer Kraft  
Phone: 303-735-1748  
Email: jennifer.kraft@cu.edu  
Web: www.colemaninstitute.org

The Coleman Institute for Cognitive Disabilities of the University of Colorado catalyzes and integrates advances in science, engineering, and technology to promote the quality of life and independent living of people with cognitive disabilities. We are committed to providing scientific, technological, and public policy leadership to strengthen the voice of persons with cognitive disabilities and their families in our society.

## FLORIDA INSTITUTE OF TECHNOLOGY (FIT)

### TABLE #11

150 W. University Boulevard, Melbourne, FL 32901  
Contact: Theresa Regan  
Phone: 321-674-8382  
Email: tregan@fit.edu  
Web: www.aba.fit.edu

Do you want to assist in helping people learn new behaviors? Become a part of the solution in improving people's lives by becoming a behavior analyst. The Department of Continuing Education at FIT can provide you with the necessary training conveniently and economically. We provide high quality online coursework for certification, as well as the continuing education courses needed to maintain that certification.

## GENOA, A QOL HEALTHCARE COMPANY

### TABLE #7

3140 Neil Armstrong Boulevard, Suite 300, Eagan, MN 55121  
Contact: Hillary Volkman  
Phone: 612-200-1763  
Email: hvolkman@genoa-qol.com  
Web: www.genoa-qol.com

Genoa, a QoL Healthcare Company is the nation's market-leading provider of pharmacy services dedicated to the behavioral health community and those affiliated with managing the cost and quality of their care. For more information about our on-site pharmacy models, please visit our website.

## HEALTH RISK SCREENING, INC.

### TABLES #5-8

25400 US Highway 19 N #197, Clearwater, FL 33763  
Contact: Gina Kugler  
Phone: 727-437-3201  
Email: gina@hrstonline.com  
Web: www.hrstonline.com

The Health Risk Screening Tool (HRST) is a web-based instrument developed to detect health risks associated with ID/DD and prompt for special attention and prevention. The powerful tool, coupled with our library of webinars, posters and e-learning courses makes us the go-to company for those looking to reduce or prevent health risks.

## ICENTRIX CORP

### TABLE #12

11 Red Roof Lane, Salem, NH 03079  
Contact: Alex Suyer  
Phone: 603-893-3922  
E-mail: julie@icentrix.com  
Web: www.icentrix.com

iCentrix offers a comprehensive database system designed specifically for providers of Developmental Disabilities services. Key features include a Complete Medical record, Goal Tracking, Record Review and Auditable Service Delivery Reports. The system is integrated with a robust reporting engine that delivers a wide range of reports.

## LINTONS FOOD SERVICE MANAGEMENT

### TABLE #13

4 Sentry Parkway East, Suite 100, Bluebell, PA 19422  
Contact: Gary Rittereiser  
Phone: 610-277-9767  
E-mail: grittereiser@lintonsl.com  
Web: www.lintonsl.com

A top 50 food management company, Lintons Food Service Management provides food and nutritional services to IDD and mental health providers. We are committed to meeting the unique needs of every client we serve in the most responsive, effective, and economical manner possible.

## LIVING INNOVATIONS

### TABLE #27

PO Box 607, Greenland, NH 03840  
Contact: Perry Blass  
Phone: 603-502-3125  
E-mail: pbllass@innovations.com  
Web: www.innovations.com

Living Innovations is a mission-driven and values-based organization committed to supporting people with disabilities to have a good life at home and in the community. Our website speaks to our values, and identifies the wide variety of creative supports provided by our agency. All of our Day and Residential services have a minimal reliance on a facility and are completely person-centered.

## MEDISKED, LLC

### TABLE #28

850 University Avenue, Rochester, NY 14607  
Contact: Linda Nakagawa  
Phone: 866-633-4753  
E-mail: linda\_nakagawa@medisked.com  
Web: www.medisked.com

Medisked, LLC supports human services organizations nationwide with innovative software solutions and the combined expertise of an experienced, committed team. We work with stakeholders and partners to provide data analysis, benchmarking, reporting, and recommendations for home and community-based services (HCBS)-specific initiatives.

**SPONSOR**

**THE MENTOR NETWORK**

**TABLE #3**

313 Congress Street, 5th Floor, Boston, MA 02210  
 Contact: Margaret Scott  
 Phone: 617-790-4877  
 E-mail: [margaret.scott@thementornetwork.com](mailto:margaret.scott@thementornetwork.com)  
 Web: [www.thementornetwork.com](http://www.thementornetwork.com)

With more than 30 years of experience providing home and community-based services, the partners of The MENTOR Network support people in 33 states to achieve their personal aspirations through supported employment, consumer directed plans and residential options in a variety of settings, including Host Homes/Share Living, in-home services, and small group's homes.

**MINOT STATE UNIVERSITY**

**TABLE #18**

500 University Avenue West, Minot, ND 58707  
 Contact: Jana Schultz  
 Phone: 701-858-3050  
 E-mail: [jana.l.schultz@minotstateu.edu](mailto:jana.l.schultz@minotstateu.edu)  
 Web: [www.minotstateu.edu/sped/undergraduate-programs.shtml](http://www.minotstateu.edu/sped/undergraduate-programs.shtml)

Minot State University's Department of Special Education is committed to preparing education and human service leaders of tomorrow through our diverse portfolio of undergraduate and graduate programs. MSU's on-line asynchronous degree offerings include AS and BS in Human Services (non-teaching) and MS in Special Education. For more information, email [evan.borisinkoff@minotstateu.edu](mailto:evan.borisinkoff@minotstateu.edu).

**NADD**

**TABLE #26**

132 Fair Street, Kingston, NY 12401  
 Contact: Robert Fletcher  
 Phone: 845-331-4336  
 Email: [rfletcher@thenadd.org](mailto:rfletcher@thenadd.org)  
 Web: [www.thenadd.org](http://www.thenadd.org)

NADD is recognized as the world's leading organization in providing educational services, training materials and conferences. NADD has been influential in the development of appropriate community based policies, programs, and opportunities in addressing the mental health needs of persons with intellectual and developmental disabilities.

**NADSP**

**TABLE #19**

1971 Western Avenue, Albany, NY 12203  
 Contact: Tanya Moyer  
 Phone: 844-446-2377  
 E-mail: [tmoyer@nadsp.org](mailto:tmoyer@nadsp.org)  
 Web: [www.nadsp.org](http://www.nadsp.org)

NADSP's mission is to elevate the status of direct support professionals by improving practice standards, promoting system reform, and advancing their knowledge, skills and values. NADSP values the full participation of people with disabilities in all aspects of community life through the provision of person-centered supports.

**NATIONAL LEADERSHIP CONSORTIUM ON DEVELOPMENTAL DISABILITIES**

**TABLE #23**

111 Alison Hall, Newark, DE 19716  
 Contact: Kristen Loomis  
 Phone: 302-831-4728  
 Email: [kloomis@udel.edu](mailto:kloomis@udel.edu)  
 Web: [www.nlccd.org](http://www.nlccd.org)

The National Leadership Consortium on Developmental Disabilities at the University of Delaware is a partnership of fifteen developmental disabilities organizations. The Consortium offers intensive week-long leadership institutes designed to meet specific needs of disability organizations. The goal is to assure the quality and commitment of the next generation of leaders.

**ORANGE SOCKS**

**TABLE #10**

215 N. 200 E, Lindon, UT 84042  
 Contact: Gerald Nebeker  
 Phone: 801-796-9540  
 E-mail: [gerald@orangesocks.org](mailto:gerald@orangesocks.org)  
 Web: [www.orangesocks.org](http://www.orangesocks.org)

Orange Socks was created to support parents who have received the news that their baby has a disability in-utero or shortly after birth. Its purpose is to connect parents with other parents who have a child with a similar diagnosis. If you are such a parent, we want your story.

**PHARMACY ALTERNATIVES**

**TABLE #24**

9901 Linn Station Road, Louisville, KY 40223  
 Contact: Kathy Brown  
 Phone: 847-269-3167  
 E-mail: [kathybrown@palrx.com](mailto:kathybrown@palrx.com)  
 Web: [www.palrx.com](http://www.palrx.com)

Pharmacy Alternatives is a long-term care pharmacy dedicated to supporting individuals with intellectual disability.

**QBS, INC**

**TABLE #30**

49 Plain Street, #200, North Attleboro, MA 02260  
 Contact: Patty Pruden-Lennox  
 Phone: 508-316-4223  
 E-mail: [pprudlennox@qbscompanies.com](mailto:pprudlennox@qbscompanies.com)  
 Web: [www.QBScompanies.com](http://www.QBScompanies.com)

QBS Inc., a leading national consulting and behavioral training company, offers Safety-Care™ Behavioral Safety Training. Safety-Care is founded upon principles and procedures of Applied Behavior Analysis and Positive Behavioral Supports, training staff in evidence-based practices toward the prevention, minimization, and management of behavioral challenges.

## RESEARCH AND TRAINING CENTER ON COMMUNITY LIVING, UMN

### TABLE #20

UMN, 150 Pillsbury Drive, SE, 109 Pattee Hall, Minneapolis, MN 55455  
Contact: Jerry Smith  
Phone: 612-624-4336  
E-mail: smith495@umn.edu  
Web: www.rtc.umn.edu

For over 20 years the Research and Training Center on Community Living, University of Minnesota, has engaged in the development and dissemination of knowledge to promote community living, employment and self-determination of persons with intellectual and developmental disabilities.

### SPONSOR

## Ruby Electronic Docs

### TABLE #16

170 North Road, E. Windsor, CT 06088  
Contact: Karen Gaston  
Phone: 860-519-7077  
Email: Karen@rubyelectronicdocs.com  
Website: www.rubyelectronicdocs.com

Ruby Electronic Docs is a simplified EMR Application for the intellectual disability professional.

## SCIOTO PROPERTIES

### TABLE #15

4145 Powell Road, Powell, OH 43065  
Contact: Kate McNulty  
Phone: 614-889-5191  
Email: kmcnulty@scioto.com  
Web: www.scioto.com

Since 1999, Scioto has been helping provider organizations of all sizes to acquire and manage their real estate needs. We are a national real estate company that is committed to developing and investing in quality housing and related healthcare facilities for people with disabilities.

## STEADY-CARE

### TABLE #9

PO Box 1176, Lynnfield, MA 01960  
Contact: Pattie Marrin  
Phone: 978-968-2800  
E-mail: pmarrin@steadycare.com  
Web: www.steadycare.com

Attendance & Location Verification System with Alerts—Ideal for day & night shifts. Know people arrived at designated location & time they checked in. Know if they are awake and still there. Get alerts when they do not check in. Manage online access via phone mobile or app. Aids with compliance. Helps promote safety and accountability.

## THERAP SERVICES

### TABLE #17

59 E Hite Court, Schenectady, NY 12303  
Contact: Karen Niedermeier  
Phone: 518-491-0960  
Email: karen.niedermeier@therapservices.net  
Web: www.therapservices.net

Therap is a certified Electronic Health Record and patented HIPAA-compliant software solution used by state and county systems and provider agencies working with people with ID/DD in HCBS, ICF-DD and other settings. Therap is utilized by over 3,400 organizations to improve quality of care for the people they support.

## THIS END UP FURNITURE, CO.

### TABLE #21

500 N 7th Street, Sanford, NC 27330  
Contact: Ann Walsh  
Phone: 978-621-6425  
E-mail: annwalsh@thisendup.com  
Web: www.thisendup.com

This End Up Furniture Company's careful craftsmanship goes into creating each piece. We pride ourselves in a quality products and great customer service. Let us show you how This End Up can meet all your furniture needs.

## UNIVERSITY OF CONNECTICUT UCEDD

### SPONSOR

### TABLE #32

263 Farmington Avenue, Farmington, CT 06111  
Contact: Danielle Webber  
Phone: 860-679-1507  
E-mail: dwebber@uchc.edu  
Web: www.uconnucedd.org

The University of Connecticut's A.J. Pappanikou Center for Excellence in Developmental Disabilities (UCEDD) engages in innovative disability related research, training and technical assistance to bring about societal change and improvement in relation to people with disabilities. The UCEDD's activities are guided by a belief in individualized supports, inclusion, self-determination, natural supports and collaboration with organizations to address policy issues and systems change.

## SILENT AUCTION

### TABLES #37-38

A silent auction will be held during the exhibit time. Come and bid on items of your choice! Bidding closes at eleven on Wednesday and all the proceeds from the auction will benefit People First of Connecticut, Inc.

## IDEA BOARD

The idea board will be staffed during the exhibit hours. The AAIDD Board of Directors is interested in hearing your good ideas about the future of the organization, and if you put up an idea, you will get a raffle ticket for a fantastic prize. We have a total of 4 Fitbits, and we will be raffling off two Fitbits on Tuesday and two Fitbits on Wednesday among in-person posters. Participate virtually by twitter with #aaididea



Tuesday, June 27

7:30 – 8:30 am

**Administration and Community Services Interest Networks Joint Breakfast Meeting**

Effective Recruitment and Retention Strategies of Direct Support Professionals

*Speaker: Amy Hewitt, PhD, FAAIDD, University of Minnesota*

**ROOM: 25**

7:30 – 8:30 am

**Direct Support Professionals Interest Network**

*Presiding: Colleen McLaughlin, MEd, FAAIDD, Temple University*

**ROOM: 12**

7:30 – 8:30 am

**Family Interest Network**

*Presiding: Thomas Fish, PhD, FAAIDD, The Ohio State University*

**ROOM: 13**

7:30 – 8:30 am

**International Interest Network**

*Presiding: Caya Chiu, National Taiwan Normal University & Maria Carbó Carreté, PhD, Universitat Ramon Llull*

**ROOM: 22**

7:30 – 8:30 am

**Multicultural Concerns Interest Network**

*Presiding: Ellis "Pat" Craig, PhD, FAAIDD, Consultant*

**ROOM: 11**

7:30 – 8:30 am

**Social Work Interest Network**

*Presiding: Mark D. McManus, PhD, MSSW, University of Akron*

**ROOM: 23**

7:30 – 8:30 am

**Technology Interest Network**

*Presiding: Shea Tanis, PhD, University of Colorado*

**ROOM: 14**

12:15 – 1:45 pm

**The following Interest Networks will meet over lunch.**

Psychology Division—Room 12

Religion & Spirituality—Room 13

Research Rooms— Rooms 16 – 17

Social Work Rooms—Rooms 16 – 17

*A lunch ticket is required. (lunch fee \$20)*

Wednesday, June 28

7:00 – 8:00 am

**Health & Wellness Interest Network**

*Presiding: Kruti Acharya, MD, University of Illinois at Chicago & Carrie Coffield, PhD, Rutgers University*

**ROOM: 11**

7:00 – 8:00 am

**Humanist Interest Network**

*Presiding: Jim Mullin, MEd, FAAIDD, Retired*

**ROOM: 13**

7:00 – 8:00 am

**Reflection Time Hosted by the Religion & Spirituality Interest Network**

Poetry reading by David Coulter, MD, FAAIDD, Boston Children's Hospital

**ROOM: 22**

7:00 – 8:00 am

**Region X**

*Presiding: Michael Bloom, MA, FAAIDD, Lifelinks, Inc.*

**ROOM: 23**

7:00 – 8:00 am

**Social & Sexual Concerns Interest Network**

*Presiding: Rhonda Black, PhD, University of Hawaii Mānoa*

**ROOM: 12**

12:00 – 1:00 pm

**Education Interest Network Meeting Luncheon**

*A lunch ticket required (lunch fee \$20)*

**ROOM: 11**





Knowledge | Support | Empowerment

**BOARD OF DIRECTORS**

William C. Gaventa, Jr, MDiv, FAAIDD  
*President*

Susan Havercamp, PhD, FAAIDD  
*President-Elect*

Elizabeth Perkins, PhD, RNLD, FAAIDD  
*Vice President*

Alexandra Bonardi, MS, MHA, FAAIDD  
*Secretary/Treasurer*

Susan B. Palmer, PhD, FAAIDD  
*Immediate Past President*

**MEMBERS-AT-LARGE**

Melissa Disipio, MSA, FAAIDD

David Helm, PhD, FAAIDD

Matt Van Auken

Anthony Rodriguez, PhD

Margaret A. Nygren, EdD  
*Executive Director & CEO*

**EDITORS**

Deborah Fidler, PhD

James R. Thompson, PhD, FAAIDD

Karrie A. Shogren, PhD, FAAIDD

Michael L. Wehmeyer, PhD, FAAIDD

**AAIDD PERSONNEL**

Paul D. Aitken, CPA, CGMA

Maria A. Alfaro

Corinne Carpenter Lipsey

Sean Gerety, MA

Vaileth Hakiza

Natalie Holtz Martinez

Ravita Maharaj, PhD

Kathleen McLane

Ajith Mathew

Lindsey Polansky

Kathy Varner

Michael Winfield, MA

**INTEREST NETWORKS LEADERSHIP**

**Administration**

Sharon Gomez & Hilda Trahan

**Communication Disorders**

Yvette Evans

**Community Services**

Joanna Pierson & Matt Morgan

**Creative Arts Therapies**

Sirkku M. Sky Hiltunen

**Direct Support Professionals**

Lori Sedlezky & Colleen McLaughlin

**Education**

Colleen Thoma & Dan Zhang

**Families**

Tom Fish

**Gerontology**

Nicole Cadovious

**Health & Wellness**

Carrie Coffield & Kruti Acharya

**Humanism**

James R. Mullin

**International**

Maria Carbo-Carreté & Caya Chiu

**Legal Process & Advocacy**

Holly Riddle

**Mental Health Services**

Haleigh Scott & Julie Grieves

**Multicultural Concerns**

Ellis (Pat) Craig

**Psychology**

Rozemarijn Staal & Karyn Harvey

**Religion & Spirituality**

Neil Cudney

**Research**

Yona Lunskey & James Lemanowicz

**Sexual & Social Concerns**

Kim Spense & Rhonda Black

**Social Work**

Mark McManus

**Student & Early Career**

**Professionals**

Evan Dean & Kimberly W. Fisher

**Technology**

Daniel K. Davies & Shea Tanis

**CHAPTER AND REGIONAL LEADERSHIP**

**REGION II**

*Region Chair: Elaine Brown*

**REGION IV**

Colorado: David A. Ervin

*Region Chair: Cordelia C. Robinson*

**REGION V**

Arkansas: Dwight L. Sowell

Kansas: Susan B. Palmer

Louisiana: Tommy Brasher

Missouri: Sharon Spurlock

Oklahoma: John Gajda

Texas: Ollie Seay

*Region Chair: Ellis M. Craig*

**REGION VI**

Illinois: Donna C. Ennis

Michigan: David W. Pankotai

Ohio: James D. Dunne

Wisconsin: Claudia Meyer

*Region Chair: Linda A. Draayers*

*Assembly Representative: James D. Dunne*

**REGION VII**

Alabama: DeAnna Ferguson

Florida: Emma C. Guilarte

Georgia: Mickie B. Muroff

Mississippi: Lori Brown

North Carolina: Lynn A. Ahlgrim-Delzell

South Carolina: Laura Cooper-Davis

*Region Chair: Eric A. Evans*

**REGION VIII**

Iowa: Susan E. Koch-Seehase

North Dakota: Paul D. Kolstoe

South Dakota: Carl K. Edwards

**REGION IX**

Bermuda: Ellen E. Douglas

Maryland: Chris Knoerlein

New Jersey: Sidney W. Blanchard

West Virginia: Gabriel A. Nardi

*Region Chair: Paul F. Spangler*

*Assembly Representative: Todd S. Wilson*

**REGION X**

Connecticut: Elisa F. Velardo

Maine: Richard L. Dorian

Massachusetts: Jean Phelps

New York: Lester G. Parker, Jr.

Quebec, Nova Scotia & Prince Edward

Island: Yves Lachapelle

Rhode Island: Kathleen A. Ellis

*Region Chair: Christopher Nadelbach*

*Assembly Representative: Donald N. Miller*



## PAST PRESIDENTS

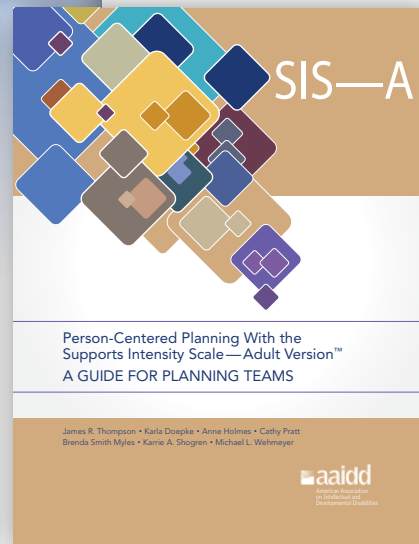
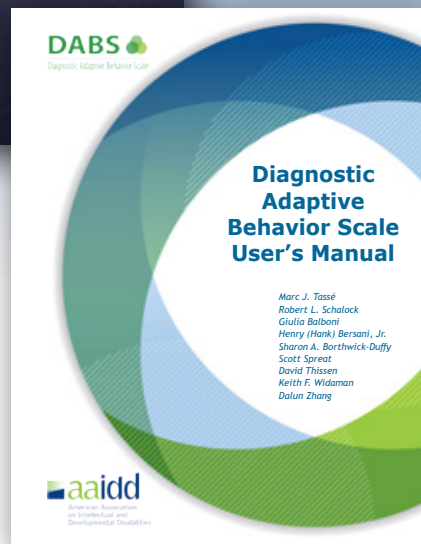
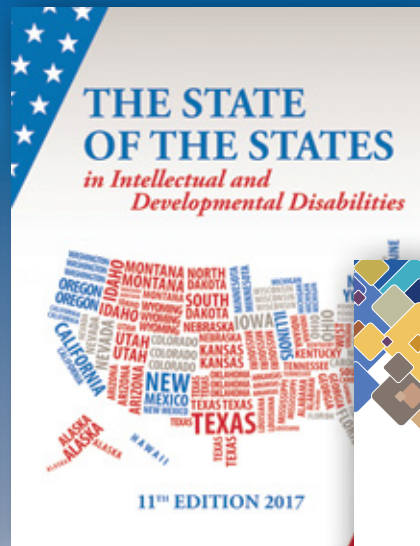
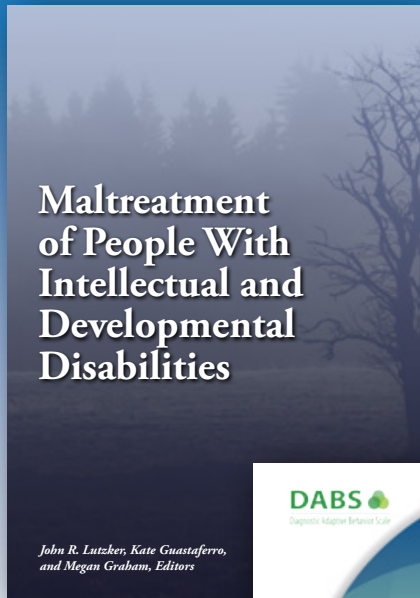
The history of the AAIDD is long and distinguished.

Our tradition, professional standing, and leadership in the area of intellectual and developmental disabilities are exemplified in the persons of our Presidents.

### OUR FORMER PRESIDENTS ARE:

1876-1877	Edouard Sequin, MD	1923-1924	Walter E. Fernald, MD	1970-1971	Horace Mann, PhD
1877-1878	Hervey B. Wilbur, MD	1924-1925	Groves B. Smith, MD	1971-1972	Robert L. Erdman, EdD
1878-1879	G. A. Doren, MD	1925-1926	Arthur R.T.Wylie, MD	1972-1973	Michael J. Begab, PhD
1879-1880	H. M. Knight, MD	1926-1927	Benjamin W. Baker, MD	1973-1974	David Rosen, MS
1880-1881	Charles T. Wilbur, MD	1927-1928	Edward R. Johnstone	1974-1975	James D. Clements, MD
1881-1882	George W. Brown, MD	1928-1929	George E. McPherson, MD	1975-1976	Sue Allen Warren, PhD
1882-1884	J.Q.A. Stewart, MD	1929-1930	George L. Wallace, MD	1976-1977	Burton Blatt, EdD
1884-1885	A.H. Beaton, MD	1930-1931	H.H. Ramsey, MD	1977-1978	Margaret J. Giannini, MD
1885-1886	F.M. Powell, MD	1931-1932	Harvey M. Watkins, MD	1978-1979	Richard C. Scheerenberger, PhD
1886-1887	William B. Fish, MD	1932-1933	Howard W. Potter, MD	1979-1980	Marjorie H. Kirkland, MSSW
1887-1888	George H. Knight, MD	1933-1934	Ransom A. Greene, MD	1980-1981	H. Carl Haywood, PhD
1888-1889	J. C. Carson, MD	1934-1935	Mary M. Wolfe, MD	1981-1982	Frank A. Borreca, EdD
1889-1890	A.C. Rogers, MD	1935-1936	Edgar A. Doll, PhD	1982-1983	A. Gail O'Connor, PhD
1890-1891	J. T. Armstrong, MD	1936-1937	Benjamin O. Whitten, MD	1983-1984	Herbert J. Grossman, MD
1891-1892	Isaac N.Kerlin, MD	1937-1938	Harry C. Storrs, MD	1984-1985	B.R. (Bill) Walker, PhD
1892-1893	Walter E. Fernald, MD	1938-1939	Neil A. Dayton, MD	1985-1986	H. Rutherford Turnbull III, LLB, LLM
1893-1894	A.E. Osborne, MD	1939-1940	Frederick Kuhlmann, PhD	1986-1987	Harold Michal-Smith, PhD
1894-1895	A.W. Wilmarth, MD	1940-1941	Meta L. Anderson, PhD	1987-1988	Valaida S. Walker, EdD
1895-1896	Samuel J. Fort, MD	1941-1942	Fred O. Butler, MD	1988-1989	Robert G. Griffith, EdD
1896-1897	Martin W. Barr, MD	1942-1943	Horatio M. Pollock, PhD	1989-1990	James W. Ellis, JD
1897-1898	George A. Brown, MD	1943-1944	C. Stanley Raymond, MD	1990-1991	Robert R. Bruininks, PhD
1898-1899	Mary J. Dunlap, MD	1944-1945	E. Arthur Whitney, MD	1991-1992	Jack A. Stark, PhD
1899-1900	Alexander Johnson	1945-1946	Mabel A. Matthews	1992-1993	Michael R. Dillon, EdD
1900-1901	W.A. Polglase, MD	1946-1947	Warren G. Murray, MD	1993-1994	David L. Braddock, PhD
1901-1902	F.W. Keating, MD	1947-1948	Lloyd N. Yepsen, PhD	1994-1995	Karen L. Middendorf
1902-1903	J.M. Murdoch, MD	1948-1949	Edward J. Humphreys, MD	1995-1996	William E. Kiernan, PhD
1903-1904	Edward R. Johnstone	1949-1950	Mildred Thomson	1996-1997	Pamela C. Baker, PhD
1904-1905	A.H. Beaton, MD	1950-1951	Richard H. Hungerford	1997-1998	Robert L. Schalock, PhD
1905-1906	George Mogridge, MD	1951-1952	Edward J. Engberg, MD	1998-1999	Stanley S. Herr, J.D., DPhil
1906-1907	W.H.C. Smith, MD	1952-1953	Bertha M. Luckey, PhD	1999-2000	Bernard R. Wagner, PhD
1907-1908	Charles Bernstein, MD	1953-1954	Arthur T. Hopwood, MD	2000-2001	Cathy Ficker Terrill, MS
1908-1909	W.N. Bullard, MD	1954-1955	Gale H. Walker, MD	2001-2002	Steven F. Warren, PhD
1909-1910	Miss Mattie Gundry	1955-1956	Arthur E. Westwell, DMD	2002-2003	Ruth A. Luckasson, JD
1910-1911	Arthur R.T. Wylie, MD	1956-1957	Thomas L. McCulloch, PhD	2003-2004	Ann P. Turnbull, EdD
1911-1912	H.G. Hardt, MD	1957-1958	Chris J. DeProspero, EdD	2004-2005	David L. Coulter, MD
1912-1913	Allan E. Carrol, MD	1958-1959	George Tarjan, MD	2005-2006	Valerie J. Bradley, MA
1913-1914	J.K. Kutnewsky, MD	1959-1960	Frances M. Coakley	2006-2007	Henry "Hank" Bersani, Jr, PhD
1914-1915	H.H. Goddard, PhD	1960-1961	Edward L. Johnstone	2007-2008	David A. Rotholz, PhD
1915-1916	Charles Bernstein, MD	1961-1962	Herschel W. Nisonger	2008-2009	Steven M. Eidelman, MSW
1916-1917	E.J. Emerick, MD	1962-1963	William Sloan, PhD	2009-2010	Joanna L. Pierson, PhD
1917-1918	George L. Wallace, MD	1963-1964	George L. Wadsworth, MD	2010-2011	Michael L. Wehmeyer, PhD
1918-1919	Charles S. Little, MD	1964-1965	Harvey A. Stevens	2011-2012	Sharon C. Gomez
1919-1920	George S. Bliss, MD	1965-1966	I. Ignacy Goldberg, EdD	2012-2013	Marc J. Tassé, PhD
1920-1921	H. A. Haynes, MD	1966-1967	Marguerite J. Hastings	2013-2014	James R. Thompson, PhD
1921-1922	Joseph H. Ladd, MD	1967-1968	Harvey F. Dingman, PhD	2014-2015	Amy S. Hewitt, PhD
1922-1923	C. Banks McNairy, MD	1968-1969	Richard Koch, MD	2015-2016	Susan B. Palmer, PhD
		1969-1970	Wesley D. White, EdD		

# Stay Current with AAIDD Best-Sellers



Visit the AAIDD Bookstore in the Exhibit Hall



American Association  
on Intellectual and  
Developmental Disabilities