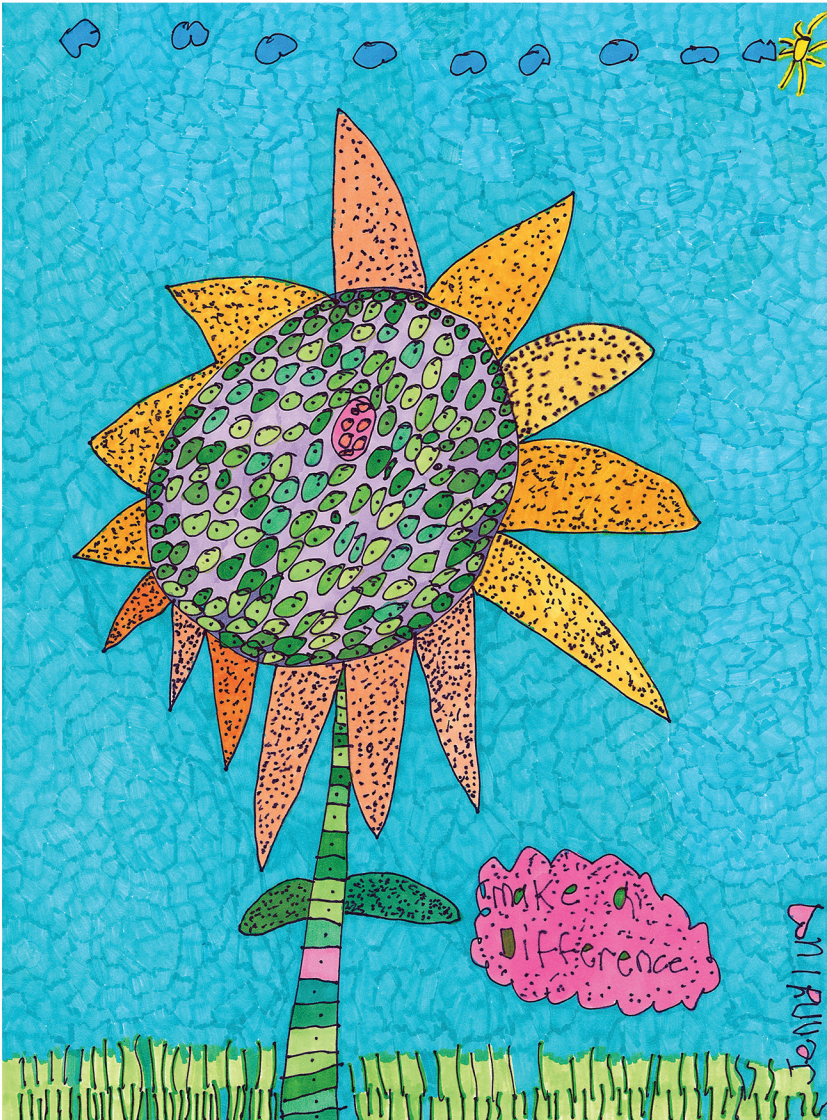


Award Program

Making a Difference

Through Research, Practice, and Policy



AAIDD 138th Annual Meeting

June 23–26, 2014 | Orlando, Florida

www.aidd.org

2015 AWARDS PROGRAM

Awards Breakfast

Wednesday, June 3, 2015—8:00 am

Presented by: Thomas Fish, PhD, FAAIDD
Chairperson, Awards and Fellowship Committee

2015 AAIDD Awards Recipients

Dybwad Humanitarian

Nancy Weiss, MSW

Hervey B. Wilbur Historic Preservation

Minnesota Governor's Council on Developmental Disabilities
for its "Parallels in Time" Project

Education

Eva M. Horn, PhD

International

Laura E. Gomez, PhD

Leadership

Steven M. Eidelman, MSW, FAAIDD

Research

Michael L. Wehmeyer, PhD, FAAIDD

Service

Thomas Fish, PhD, FAAIDD

Student

Lieke van Heumen, MS



Presidential Award

Self-Advocates Becoming Empowered

Self-Advocates Becoming Empowered (SABE) is the national organization of self-advocates with members in every state and a board of regional representatives. Founded in 1990, SABE has worked hard for the full inclusion of people with developmental disabilities in the community across the nation and around the world.

SABE was one of three organizations awarded a Regional Self Advocacy Technical Assistance grant by the Administration on Developmental Disabilities. Its project, Our Community Standing Strong (OCSS), is designed to enhance self-advocacy through peer-to-peer technical assistance in its southern collaborative states (Alabama, Arkansas, Florida, Georgia, North Carolina, Oklahoma, South Carolina, and Tennessee). One recent product of this project is a



collection of video blogs, posted on YouTube, that feature self-advocates talking about issues that are important to people with disabilities and offer power words on leadership. A direct link to the YouTube page can be found on www.sabeusa.org.

SABE's mission is to ensure that people with disabilities are treated as equals and that they are given the same decisions, choices, rights, responsibilities, and chances to speak up to empower themselves; opportunities to make new friends; and to learn from their mistakes.

Dybwad Humanitarian Award

Nancy Weiss

Nancy Weiss is a member of the faculty of the Department of Human Development and Family Studies at the University of Delaware and the Director of the National Leadership Consortium on Developmental Disabilities at the University of Delaware. The National Leadership Consortium is a partnership of eleven national disability organizations focused on assuring the quality and commitment of the next generation of leaders for government and nonprofit organizations serving people with intellectual and developmental disabilities.

Ms. Weiss has more than 35 years of experience in the field of intellectual and developmental disabilities. She has worked extensively providing advocacy, community living and positive behavioral supports. She was the former Executive Director of TASH, an international advocacy association committed to the full inclusion of people with disabilities. Ms. Weiss has been an adjunct faculty member at Johns Hopkins University and the Director of the Department for Community Services at the Kennedy Krieger Institute in Baltimore. She also served as the Executive Director of Community Systems, Inc. an agency providing progressive supports for adults with intellectual and developmental disabilities.



Ms. Weiss has worked unremittingly to end the use of aversive procedures since publishing a groundbreaking Amnesty International Call to Action in 1993. Over the ensuing twenty-two years she has organized advocates and spearheaded efforts to eliminate the use of pain as a method of behavioral control

through efforts with the American Psychological Association, Human Rights Watch, Physicians for Human Rights, the US Department of Justice and the Food and Drug Administration. She is the recipient of AAIDD's 2007 Presidential Award presented for career-long commitment to lives of independence, satisfaction and meaning for people with disabilities; exemplary leadership, and unflinching advocacy.

The consistent theme of Ms. Weiss's work has been the promotion of disability supports and policies that assure communities, schools, and workplaces that include, value, engage and challenge people with disabilities and that guarantee that individuals with disabilities are treated humanely and have access to the full range of opportunities available to all citizens.

Hervey B. Wilbur Historic Preservation Award

Minnesota Governor's Council on Developmental Disabilities for its "Parallels in Time" Project

The Minnesota Governor's Council on Developmental Disabilities (GCDD) was established in October 1971 under the Developmental Disabilities Assistance and Bill of Rights Act (DD Act) (P.L. 106-402). The formal vision of the Council is that people with developmental disabilities—like all people—need to be seen first as people; experience love and friendship; experience continuity in their lives, especially in relation to the people who are important to them; be respected and treated with dignity; have access to opportunities and information; make choices and to exercise rights; have opportunities to continue to learn throughout life; and have meaningful employment and contribute to the community.

The Council's mission is to provide information, education, and training to build knowledge, develop skills, and change attitudes that will lead to the increased independence, productivity, self-determination, integration and inclusion for people with developmental disabilities and their families. The Council began the Partners in Policymaking® program in



Minnesota in 1987 and has now graduated over 900 people with disabilities and their family members who join over 23,000 graduates around the world.

In 1996, the Council began work on Parallels in Time, a project archiving disability history including the history of the parent movement, independent living movement and self-advocacy movement to supplement the Partners in Policymaking classroom program. Major enhancements were made in 2005 incorporating videos, photo galleries, and archival documents. These products include 145 videos, 1,905 text files, and 2,669 images. Many former AAIDD leaders have been integral to this history and are a part of the archives, which can be found at <http://mn.gov/mnddc>.

Education Award

Eva Horn, PhD

Eva Horn, PhD, is a Professor in the Department of Special Education at the University of Kansas (KU) and an investigator for the Lifespan Institute for Developmental Disabilities.

Prior to coming to KU, Dr. Horn was a research associate and then faculty member at Vanderbilt University in the Department of Special Education.

She earned her undergraduate degree in elementary and special education from George Peabody College for Teachers in Nashville, Tennessee, where she taught in the Metro Nashville Schools for 10 years. She received her master's degree in early childhood special education from Northern Illinois University and her doctoral degree in education and human development from Vanderbilt University.

Dr. Horn has directed numerous externally-funded grant projects. Her primary research emphasis is on effective, instructional techniques for young children with developmental delays and disabilities and their families—specifically, designing effective curriculum and instructional strategies that maximize opportunities for all children to learn and grow. An additional research focus is the preparation and ongoing professional development of early educators by sup-



porting their view of themselves as lifelong learners who use an evidence-based decision making process for addressing effective intervention and learning support for all young children and their families.

Most recently, she served as the principal investigator for a multi-site (KU, Indiana University,

and University of Maryland) US Department of Education, Institute of Educational Sciences-funded project, Children's School Success Plus, addressing effective, high expectation early childhood curricula for all preschool children, including those with identified developmental delays and disabilities.

In addition to being an active researcher, Dr. Horn also serves as a co-director of the Office of Special Education Programs' Early Childhood Personnel Center located at the University of Connecticut. She is the coordinator of the KU Early Childhood Education/Early Childhood Special Education undergraduate and graduate teacher and leadership preparation programs. Dr. Horn was recently elected as the Vice-President for the Division of Early Childhood of the Council for Exceptional Children (CEC).

International Award

Laura E. Gómez, PhD

Laura E. Gómez began her career as a researcher at the Institute on Community Integration (INICO), became a Teaching Assistant in the Department of Psychology at the University of Valladolid in 2008, and earned a doctorate in psychology at the University of Salamanca in Spain in 2010. Her dissertation, Assessment of quality of life in social services: Validation and calibration of the Gencat Scale, was a study of the quality of life of a representative sample of social service recipients in Catalonia which culminated in the development and validation of what is now one of the most frequently used assessment tools measuring quality of life in Spain, and she was awarded the University's PhD Award for this work.

In 2011, Dr. Gómez joined the faculty at the University of Oviedo as an Assistant Professor of Psychology. Her research interests are focused primarily on the development, calibration, adaptation and validation of quality of life scales, but she has also made significant contributions in the area of supports and adaptive behavior, and in attitudes towards people with intellectual disability and challenging behaviors. She is a co-author of six



assessment instruments to measure quality of life and related personal outcomes for adults with intellectual disabilities (Gencat Scale, Integral Scale, INICO-FEAPS Scale, Fumat Scale, San Martin Scale, KidsLife Scale). These scales have been translated and adapted to more than a half-dozen languages and are used in numerous countries.

Dr. Gómez has published extensively in peer-reviewed international journals and delivered scientific presentations at international meetings, she is a reviewer and member of several editorial boards of journals in the US and Europe, and is also a member of a small group of experts that, under the leadership of the AAIDD and World Health Organization, has been actively engaged in the field-testing of the ICD-11's proposed definition of the condition known as intellectual disability.

Dr. Gómez is an active member of the AAIDD International Special Interest Group. She has received the Infanta Cristina National and Iberoamerican Research Award (2010), Young Researcher Award on Aging in Intellectual Disabilities from IAASSIDD (2012), and Research Award About People with Intellectual Disability from AMPANS (2014).

Leadership Award

Steven M. Eidelman, MBA, MSW, FAAIDD

Steven Eidelman is the H. Rodney Sharp Professor of Human Services Policy and Leadership at the University of Delaware, where he holds joint faculty appointments in the School of Urban Affairs and Public Policy and the Department of Individual and Family Studies.



Mr. Eidelman is Fellow of AAIDD and Past President of its Board of Directors, and is a former Executive Director of The Arc of the United States. He currently serves as the Executive Director

of the Joseph P. Kennedy, Jr. Foundation and is Senior Advisor to the Chairman and CEO of Special Olympics. He is on the Board of The Open Society Institute's Mental Health Initiative, based in Budapest.

Mr. Eidelman's most recent efforts have focused on leadership development for practicing disability

professionals and on implementation of Article 19 of the UN Convention on the Rights of Persons with Disabilities, with a focus on deinstitutionalization.



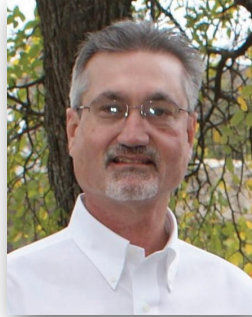
Research Award

Michael Wehmeyer, PhD, FAAIDD

Michael L. Wehmeyer, PhD simultaneously holds the following positions at the University of Kansas: Professor of Special Education, Director and Senior Scientist of the Beach Center on Disability, and Director of the Kansas University Center on Developmental Disabilities. He has directed externally funded research, development, and leadership training projects totaling in excess of \$30 million that pertain to the education and support of people with intellectual and developmental disabilities.

Dr. Wehmeyer has authored or co-authored more than 300 journal articles and book chapters and authored, co-authored, edited, or co-edited 32 books on disability and education issues, including topics related to self-determination, positive psychology and disability, transition to adulthood, the education and inclusion of students with extensive and pervasive support needs, and technology use by people with cognitive disabilities. He is co-author of the widely used textbook *Exceptional Lives: Special Education in Today's Schools* (now in its 8th Edition), and his recent books include *The Story of Intellectual Disability: An Evolution of Meaning, Understanding, and Public Perception* (2013); *The Oxford Handbook of Positive Psychology and Disability* (2013), and *Good Blood, Bad Blood: Science, Nature and the Myth of the Kallikaks* (2012).

Dr. Wehmeyer is a Fellow of AAIDD, Past President of its Board of Directors, and is a founding Co-Editor of the AAIDD ejournal *Inclusion*. He is a co-author of



the AAIDD *Supports Intensity Scale-Adult Version* and the *Intellectual Disability Terminology, Classification, and Systems of Supports* (11th ed., 2010), and co-chaired the development of the *Supports Intensity Scale-Children's Version*.

Dr. Wehmeyer is also a past president of Council for Exceptional Children's (CEC) Division on Career Development and Transition (DCDT); a Fellow of the American Psychological Association, Intellectual and Developmental Disabilities Division (Division 33); and Vice-President for the Americas and a Fellow of the International Association for the Scientific Study of Intellectual and Developmental Disabilities (IASSIDD). In 1999, Dr. Wehmeyer was the inaugural recipient of the Distinguished Early Career Research Award from CEC's Division for Research and has received research awards from two other CEC Divisions, as well as AAIDD Region V. He received the 2003 AAIDD Education award. In 2013, Dr. Wehmeyer was awarded the Distinguished Researcher Award for lifetime contributions to research in intellectual disability by The Arc of the United States. Dr. Wehmeyer holds undergraduate and master's degrees in special education, and a master's degree in experimental psychology from the University of Sussex in Brighton, England, where he was a Rotary International Fellow from 1987 to 1988. He earned a PhD in human development and communication sciences from the University of Texas at Dallas, where he received a 2014 Distinguished Alumni Award.

Service Award

Thomas Fish, PhD, FAAIDD

Thomas Fish, PhD, is Director of Social Work and Family Support Services at The Ohio State University's Nisonger Center for Excellence in Developmental Disabilities where he has worked for over 35 years.

Dr. Fish has been a key player in promoting community participation, independence, and productivity for individuals with intellectual and developmental disabilities and their families. Included among the many social, recreational, and transition programs that he has developed or co-developed in his career are Aspirations, a model social and vocational support program for people with autism; Ohio SIBS, an organization dedicated to serving the needs of adult siblings of people with developmental disabilities; and the annual Ohio Sibling Conference. He is a founding member of the National Sibling Leadership Network, and also founded the tremendously successful Next Chapter Book Club and the Jot It Down writing club, which now serve



over 1,500 people with intellectual and developmental disability each week in 29 states and five countries.

Dr. Fish co-authored *Next Chapter Book Club: A Model Community Literacy Program for People with Intellectual Disabilities* (2009) and *Lucky Dogs, Lost Hats, and Dating Don'ts: Hi-*

Lo Stories about Real Life (2012). He was a 1999 recipient of the Mary Switzer Merit Research Fellowship from the National Institute on Disability and Rehabilitation Research.

Dr. Fish is a Fellow of AAIDD, a member of its Awards and Fellowship Committee, and Chair of its Families Special Interest Group. He received his master's in social work from Boston University and PhD in rehabilitation counseling from The Ohio State University. His clinical and research interests center on family support, employment, independence, and community inclusion for individuals with disabilities and their families.



Student Award

Lieke van Heumen, MS

Lieke van Heumen, MS, is a doctoral candidate in disability studies at the University of Illinois at Chicago (UIC). She received both her undergraduate and master degrees in psychology with a concentration in gerontology from Radboud University in the Netherlands.

Ms. van Heumen worked as a psychologist in five group homes for people with intellectual disability in the Netherlands. Her primary research interest is the intersection of aging and disability with a focus on supports that contribute to aging well by promoting positive experiences across the life course and through different life course transitions. Her dissertation research explores how the social relationships of older adults with intellectual disability develop and change across the life course. Retrieving the lived experiences of older adults with disabilities by means of inclusive and accessible research methods is key to assuring the meaningful engagement of adults with disabilities in her research process.

Under the mentorship of her advisor, Dr. Tamar Heller at the Rehabilitation Research and Training Center on Aging with Developmental Disabilities at UIC, Ms. van Heumen has participated in research on the experiences of adults with intellectual and developmental disabili-



ties and their families in a self-directed services program. In the Netherlands she coordinated a research project on the impact of individual future planning supports on the quality of life of young adults with intellectual disability and their families during transition to adulthood in the city of Almere, the Netherlands.

Currently she is involved in a study at UIC evaluating the implementation of the Ligas consent decree that stipulates the provision of community-based services to adults with developmental disabilities on the waiting list or in large congregate settings in Illinois.

Ms. van Heumen regularly provides trainings on aging with intellectual disability and respectful supports for those living with dementia. She is the co-author of several publications on aging and disability. She has received several awards from UIC, including the Chancellor's Graduate Research Fellowship for interdisciplinary research, the Paul D. Doolen Scholarship for the Study of Aging and the Rue Bucher Memorial Award for Qualitative Studies in Social Processes. Furthermore, her work has been supported by Dutch and American foundations including the VSB Fonds, Prins Bernhard Cultuur Fonds, the Chicago Consular Corps and the Netherland America Foundation.

Past Presidents

The history of the AAIDD is long and distinguished. Our tradition, professional standing, and leadership in the area of intellectual and Developmental disabilities are exemplified in the persons of our Presidents. Our former Presidents are:

1876-1877	Edouard Sequin, MD	1910-1911	Arthur R.T. Wylie, MD
1877-1878	Hervey B. Wilbur, MD	1911-1912	H. G. Hardt, MD
1878-1879	G. A. Doren, MD	1912-1913	Allan E. Carrol, MD
1879-1880	H. M. Knight, MD	1913-1914	J. K. Kutnewsky, MD
1880-1881	Charles T. Wilbur, MD	1914-1915	H. H. Goddard, PhD
1881-1882	George W. Brown, MD	1915-1916	Charles Bernstein, MD
1882-1884	J. Q. A. Stewart, MD	1916-1917	E. J. Emerick, MD
1884-1885	A. H. Beaton, MD	1917-1918	George L. Wallace, MD
1885-1886	F. M. Powell, MD	1918-1919	Charles S. Little, MD
1886-1887	William B. Fish, MD	1919-1920	George S. Bliss, MD
1887-1888	George H. Knight, MD	1920-1921	H. A. Haynes, MD
1888-1889	J. C. Carson, MD	1921-1922	Joseph H. Ladd, MD
1889-1890	A. C. Rogers, MD	1922-1923	C. Banks McNairy, MD
1890-1891	J. T. Armstrong, MD	1923-1924	Walter E. Fernald, MD
1891-1892	Isaac N. Kerlin, MD	1924-1925	Groves B. Smith, MD
1892-1893	Walter E. Fernald, MD	1925-1926	Arthur R. T. Wylie, MD
1893-1894	A. E. Osborne, MD	1926-1927	Benjamin W. Baker, MD
1894-1895	A. W. Wilmarth, MD	1927-1928	Edward R. Johnstone
1895-1896	Samuel J. Fort, MD	1928-1929	George E. McPherson, MD
1896-1897	Martin W. Barr, MD	1929-1930	George L. Wallace, MD
1897-1898	George A. Brown, MD	1930-1931	H. H. Ramsey, MD
1898-1899	Mary J. Dunlap, MD	1931-1932	Harvey M. Watkins, MD
1899-1900	Alexander Johnson	1932-1933	Howard W. Potter, MD
1900-1901	W. A. Polglase, MD	1933-1934	Ransom A. Greene, MD
1901-1902	F. W. Keating, MD	1934-1935	Mary M. Wolfe, MD
1902-1903	J. M. Murdoch, MD	1935-1936	Edgar A. Doll, PhD
1903-1904	Edward R. Johnstone	1936-1937	Benjamin O. Whitten, MD
1904-1905	A. H. Beaton, MD	1937-1938	Harry C. Storrs, MD
1905-1906	George Mogridge, MD	1938-1939	Neil A. Dayton, MD
1906-1907	W. H. C. Smith, MD	1939-1940	Frederick Kuhlmann, PhD
1907-1908	Charles Bernstein, MD	1940-1941	Meta L. Anderson, PhD
1908-1909	W. N. Bullard, MD	1941-1942	Fred O. Butler, MD
1909-1910	Miss Mattie Gundry	1942-1943	Horatio M. Pollock, PhD



Past Presidents (con't.)

1943-1944	C. Stanley Raymond, MD	PhD	
1944-1945	E. Arthur Whitney, MD	1979-1980	Marjorie H. Kirkland, MSSW
1945-1946	Mabel A. Matthews	1980-1981	H. Carl Haywood, PhD
1946-1947	Warren G. Murray, MD	1981-1982	Frank A. Borreca, EdD
1947-1948	Lloyd N. Yepsen, PhD	1982-1983	A. Gail O'Connor, PhD
1948-1949	Edward J. Humphreys, MD	1983-1984	Herbert J. Grossman, MD
1949-1950	Mildred Thomson	1984-1985	B. R. (Bill) Walker, PhD
1950-1951	Richard H. Hungerford	1985-1986	H. Rutherford Turnbull III, LLB, LLM
1951-1952	Edward J. Engberg, MD	1986-1987	Harold Michal-Smith, PhD
1952-1953	Bertha M. Luckey, PhD	1987-1988	Valaida S. Walker, EdD
1953-1954	Arthur T. Hopwood, MD	1988-1989	Robert G. Griffith, EdD
1954-1955	Gale H. Walker, MD	1989-1990	James W. Ellis, JD
1955-1956	Arthur E. Westwell, DMD	1990-1991	Robert R. Bruininks, PhD
1956-1957	Thomas L. McCulloch, PhD	1991-1992	Jack A. Stark, PhD
1957-1958	Chris J. DeProspro, EdD	1992-1993	Michael R. Dillon, EdD
1958-1959	George Tarjan, MD	1993-1994	David L. Braddock, PhD
1959-1960	Frances M. Coakley	1994-1995	Karen L. Middendorf
1960-1961	Edward L. Johnstone	1995-1996	William E. Kiernan, PhD
1961-1962	Herschel W. Nisonger	1996-1997	Pamela C. Baker, PhD
1962-1963	William Sloan, PhD	1997-1998	Robert L. Schalock, PhD
1963-1964	George L. Wadsworth, MD	1998-1999	Stanley S. Herr, JD, DPhil
1964-1965	Harvey A. Stevens	1999-2000	Bernard R. Wagner, PhD
1965-1966	I. Ignacy Goldberg, EdD	2000-2001	Cathy Ficker Terrill, MS
1966-1967	Marguerite J. Hastings	2001-2002	Steven F. Warren, PhD
1967-1968	Harvey F. Dingman, PhD	2002-2003	Ruth A. Luckasson, JD
1968-1969	Richard Koch, MD	2003-2004	Ann P. Turnbull, EdD
1969-1970	Wesley D. White, EdD	2004-2005	David L. Coulter, MD
1970-1971	Horace Mann, PhD	2005-2006	Valerie J. Bradley, MA
1971-1972	Robert L. Erdman, EdD	2006-2007	Henry "Hank" A. Bersani, PhD
1972-1973	Michael J. Begab, PhD	2007-2008	David A. Rotholz, PhD
1973-1974	David Rosen, MS	2008-2009	Steven M. Eidelman, MSW
1974-1975	James D. Clements, MD	2009-2010	Joanna L. Pierson, PhD
1975-1976	Sue Allen Warren, PhD	2010-2011	Michael L. Wehmeyer, PhD
1976-1977	Burton Blatt, EdD	2011-2012	Sharon C. Gomez
1977-1978	Margaret J. Giannini, MD	2012-2013	Marc J. Tassé, PhD
1978-1979	Richard C. Scheerenberger,	2013-2014	James Thompson, PhD

Save the Date for
**Louisville
Kentucky**



139th AAIDD Annual Meeting
June 1–4, 2015



American Association
on Intellectual and
Developmental Disabilities