

Program

# Making a Difference



Through Research, Practice, and Policy

  
The Meeting of Intellectual Disability Professionals

June 1-4, 2015  
Louisville, Kentucky



Welcome to Louisville, Kentucky and AAIDD's 139th annual meeting. This year's program includes many presentations and posters that highlight how AAIDD members are making a difference in the lives of people with intellectual and developmental disabilities and their families/allies through their research, practice, and policy. I am always impressed by the volume and quality of presentation submissions that AAIDD receives each year and this year was an exceptional year. As such, the conference program this year certainly reflects the high quality and caliber of researchers, clinicians, educators and policy professionals that make up associations interdisciplinary membership.

It is a time of change in the field of intellectual and developmental disabilities. Significant policies have been passed in the US at the federal level which are changing the landscape. The passage of the Workforce Innovation and Opportunity Act, the new Home and Community Based Services regulations on community living and the Affordable Care Act are just a few examples of significant policy changes that will have tremendous effect of practices, policies and research, and ultimately on the lives of people with disabilities. The Convention on the Rights of People with Disabilities has been signed by 158 countries and ratified by 147; however, it still has not been ratified by the US. States are scrambling to meet new requirements, increasing demand for services and higher quality while simultaneously living within budget constraints.

Service provider and practitioners are working hard to find efficiencies while simultaneously producing and measuring the outcomes of their services and supports that improve health, well-being, employment, social inclusion, learning, self-determination, social capital and other aspects of community living. The use of technology is exploding opportunities for individuals to learn new skills in the areas of communication, independent living, mobility, community participation and basic academic areas such as math, science and reading. New discoveries, new applications and new opportunities are resulting in countless ways AAIDD's members are making a difference. This annual meeting and conference will provide you with many opportunities to learn about such new and exciting developments.

I want to take this opportunity to publically thank my fellow AAIDD Board members for their contributions and the passion they bring to AAIDD. I promise you that this group of leaders has worked hard to ensure the future and relevance of this association. I have also felt privileged to work in partnership with AAIDD's Executive Director/CEO Maggie Nygren who works tirelessly to represent AAIDD in key partnerships, ensures that the organization is evolving multiple revenue streams and leads this organization into the future. The association's staff is incredible. They are a group of talented, resourceful, and dedicated individuals and we are so fortunate to have their collective energy in carrying out the mission of AAIDD,

*to promote progressive policies, sound research, effective practices, and universal human rights for people with intellectual and developmental disabilities.*

I would also like to thank Susan Palmer, the incoming President of AAIDD and conference chair for pulling together this excellent program. I know from first hand experience that it is a lot of work and she has done an excellent job.

I hope that you enjoy the conference and the opportunity to learn from and network with your colleagues. I also hope that you will seek out new members and first time attenders of the conference to get to know them and welcome them to our association. I look forward to having an opportunity to personally greet you and learn about how your work is making a difference through research, policy and practice.

Warm regards,

A handwritten signature in black ink that reads "Amy S Hewitt". The signature is fluid and cursive.

Amy Hewitt, PhD, FAAIDD  
President, AAIDD Board of Directors





It is a pleasure to welcome you to the 139th Annual Meeting of the American Association on Intellectual and Developmental Disabilities (AAIDD) held in Louisville, Kentucky. Joining me in this welcome are the Conference Planning Committee, Local Arrangements Committee (Co-chaired by Larry Weishaar and Jason Squires), and the wonderful AAIDD staff who have worked throughout the past year to accomplish all the necessary tasks to ensure a successful meeting. I especially want to thank Maggie Nygren and Maria Alfaro for their leadership and work on this meeting in Louisville.

The conference theme of *Making a Difference Through Research, Practice, and Policy* sets the stage for lively discussion, collaboration, and interaction among attendees this year. We hope you gain new insight and information while you are here. Please enjoy the meeting's Louisville influence, Galt House ambience, and the wonderful hospitality in Kentucky by attending the President's Reception on Sunday evening, the riverfront tour on the *Spirit of Jefferson* on Monday evening, and the informative Poster Presentation and Reception on Tuesday evening. After meeting events are concluded, you might spend time enjoying early June in the fabulous city of Louisville—home of the Kentucky Derby, Louisville Slugger, and Mohammed Ali Museum, listing just a few of the local attractions.

On Monday morning, be sure to hear the report on the state of the Association at the Member Forum and Open Membership Meeting, followed by meetings of the Assembly of Geographic Interests and the Conference of Professional Interests. Pre-conference sessions on a variety of interesting topics are available after lunch. Please also consider attending the free pre-conference session at 4:30 pm on Monday highlighting the Association's work in death penalty issues. A stellar panel of experts will discuss intellectual disability in capital cases, highlighting Amicus briefs and topics from the recently AAIDD published volume, *The Death Penalty and Intellectual Disability*.

We officially begin the conference Tuesday morning with the Opening Plenary, *What do we Know from Research, Practice, and Policy?*, followed by concurrent sessions on a variety of topics will draw your attention throughout day. Don't forget to attend the evening Poster Presentation and Reception. This Tuesday evening session is sure to be of great interest to all—it's a very good time to investigate new ideas, see old friends, and meet new people who have similar interests. Following the posters, several additional receptions are scheduled: a Publications event provides the opportunity to meet AAIDD authors and editors, and the Student and Early Career Professionals event provides a forum for SECP-specific networking. Both of these later receptions are a good time to learn more, as well as meet, greet, and get to know colleagues within AAIDD.

I encourage you to visit the exhibitors and silent auction and try your hand at this year's game in the exhibit hall. The exhibits are open 7:30 to 4 on Tuesday and until noon on Wednesday. Please thank our exhibitors and sponsors listed in the program when you can during the meeting.

Wednesday at the 139th Annual Meeting begins with a breakfast meeting to celebrate this year's award winners. Please attend and honor the awardees and their achievements. Then, please remain for the second Plenary Session moderated by Glenn Fujiura, *Where do we go with Research, Practice, & Policy?* Following the Wednesday concurrent sessions, the Closing Plenary will feature the remarks of your incoming president for 2015–2016, Susan Palmer, *Making a Difference through Research, Practice, and Policy*. Following the close of the conference, activities continue on Wednesday afternoon and on Thursday morning with a selection of post-conference sessions.

We hope that you take advantage of all the information and opportunities at this year's conference to network and engage in cross-disciplinary collaboration related to individuals with intellectual and developmental disabilities. I look forward to meeting many new people over the several days in Louisville. Be sure and introduce yourself to me and other members of the AAIDD board. We appreciate your feedback and support for the ongoing activities of the Association. Welcome to the meeting, and thank you for attending and fully participating!

Susan Palmer, PhD, FAAIDD  
President-Elect and Conference Chair

**Conference  
Planning Committee  
2014-2015**

Kathy Brown  
Melissa DiSipio  
Celia Feinstein  
Cathy Ficker Terrill  
William Gaventa  
Sharon Gomez  
Susan Havercamp  
Amy Hewitt  
Ronda Jenson  
Carol Britton Laws  
Ruth Luckasson  
David Mank  
Barbara Mazzella  
Loui Lord Nelson  
Terri Niland  
Mary Kay Rizzolo  
Anthony Rodriguez  
Jason Squires  
Michael Wehmeyer  
Larry Weishaar

**Louisville  
Local Arrangements  
Committee**

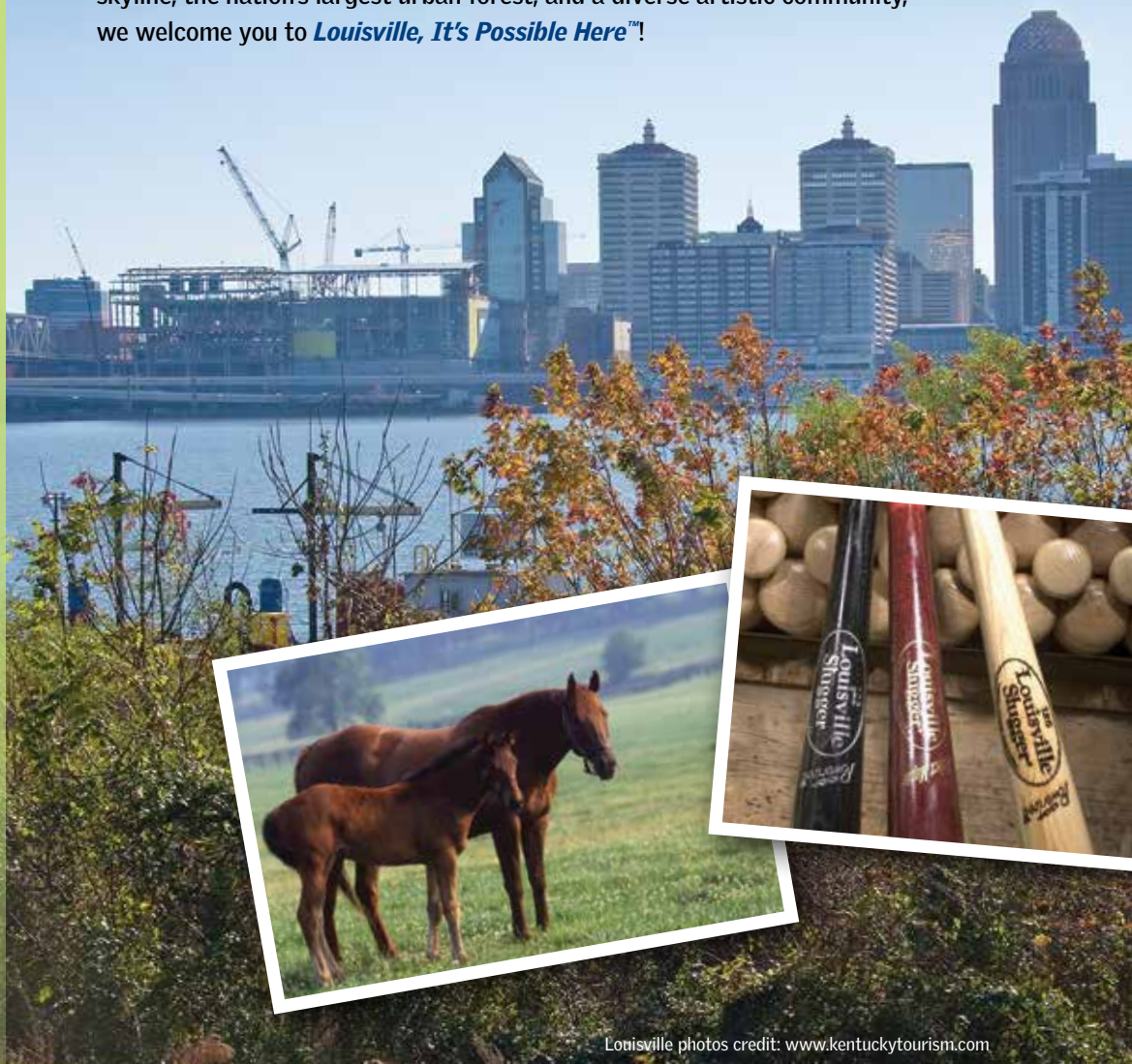
Larry Weishaar, Co-Chair  
Jason Squires, Co-Chair  
Anne Weaver  
Shannon McCracken  
Kathy Carter  
Milton Tyree  
Jean Russell  
Kelli Adanick  
Tonya Copeland  
Diane Quarles-Hartman

# Welcome to Louisville!

Welcome to Louisville! On the banks of the Ohio River, Louisville charms with a unique blend of style that makes this city exciting. The largest city in the Commonwealth of Kentucky, Louisville is named after King Louis XVI of France, and its pronunciation today is a matter of lively debate among locals and visitors.

Louisville's early economy first developed through the shipping and cargo industries due to its strategic location at the Falls of the Ohio, the Louisville and Portland Canal, and at the terminus of the Louisville and Nashville railroad. Louisville's importance to the shipping industry today continues today with the presence of the Worldport global air-freight hub for UPS at Louisville International Airport and city's location at the crossroads of three major Interstate highways (I-64, I-65 and I-71).

Although most widely known for the Kentucky Derby, the city's is also home to the Louisville Slugger Museum & Factory, the Frazier History Museum, and the largest historic preservation district solely featuring Victorian homes and buildings in the United States. You may know that over 1/3 of the world's bourbon comes from Louisville, but you may not know that 90% of US disco balls do too. A stunning skyline, the nation's largest urban forest, and a diverse artistic community, we welcome you to *Louisville, It's Possible Here™!*







## Registration Schedule

Monday .....	8:00 am – 5:30 pm
Tuesday .....	7:00 am – 5:00 pm
Wednesday .....	7:00 am – 3:00 pm
Thursday .....	8:00 am – 12:00 noon

## CONTENTS

Annual Meeting Sponsors.....	6
Social Events.....	7
Exhibit Hall Highlights .....	8
Student and Early Career Professional Activities.....	9
Hotel Floor Plans.....	10
Continuing Education Offerings .....	12
Program-at-a-Glance.....	13
Program Highlights.....	14
Annual Membership Meeting and Leadership Forum.....	14
Pre-Conference Sessions .....	14, 15
Plenary Sessions.....	16, 25, 28
Concurrent Sessions.....	17, 18, 22, 26, 27
Post Conference Sessions .....	31
General Information.....	32
Poster Presentations.....	33
Exhibits and Posters Floor Plan.....	42
Guide to Exhibitors.....	43
Leadership Group Business Meetings.....	47
2014–2015 AAIDD Leadership.....	48



Monday, June 1 | 9:00 – 10:00 am

### **AAIDD Open Annual Membership Meeting and Leadership Forum**

*Room: Combs Chandler*



# Thank you to our Generous Annual Meeting Sponsors:

**AAIDD Region V**



**ResCare**  
www.rescare.com



**UMN RTC**  
www.rtc.umn.edu/rtc



**IASSIDD**  
www.iassidd.org



**Indiana Institute on Disability and Community at University of IN**  
www.iidc.indiana.edu



**Coleman Institute**  
colemaninstitute.org



**Commonwealth Council on Developmental Disabilities**  
www.kyccdd.com



**ANCOR**  
www.ancor.org



**Carf International**  
www.carf.org



**Therap Services, LLC**  
www.therapservices.net



**University of South Carolina Center for Disability Resources (SC UCEDD)**  
www.uscm.med.sc.edu/cdrhome



**Relias Learning**  
www.reliaslearning.com



**UMKC-Institute for Human Development (MO UCEDD)**  
www.ihd.umkc.edu



**Kansas University Center on Developmental Disabilities (KU-UCEDD)**  
kucdd.org



**HRST**  
hrstonline.com



**Nisonger Center**  
nisonger.osu.edu



**Seven Counties Services, Inc.**  
www.sevendcounties.org



**The MENTOR Network**  
www.thementornetwork.com



## Sunday, May 31

8:00 – 9:00 pm

### President's Reception

Open to all conference attendees at no additional cost. Amy S. Hewitt, PhD, FAAIDD, President of the AAIDD Board of Directors, invites all attendees to join the Board at this informal reception.

*Room: Combs Chandler (Suite Tower-2nd Floor)*

## Monday, June 1

6:00 - 7:00 pm

### Louisville Waterfront Tour

All attendees are invited to join us in this Waterfront Tour on the Spirit of Jefferson.

*Limited seating, limited number of tickets available at the registration desk.*

Cost \$10



Co-sponsored  
by  
IASSIDD

Photo credit: www.kentuckytourism.com

## Wednesday, June 3, 2015

8:00 – 8:45 am

### Awards Breakfast

Join us to recognize its members and others for their service to the field with awards.

*Room: Grand Ballroom A  
(Suite Tower-2nd Floor)*

## Tuesday, June 2

5:00 – 7:00 pm

### Poster Presentations and Reception

Open to all conference attendees at no additional cost. Explore emerging research, practice, and policy at the Poster presentations and Reception.

*Room: Grand Ballroom B&C  
(Suite Tower-2nd Floor)*

7:00 – 8:30 pm

### Publications Reception

Open to all conference attendees at no additional cost. Join us at a reception featuring AAIDD book authors and journal editors. Meet your favorite editors and authors in a cocktail party atmosphere.

*Room: Willis (Suite Tower-2nd Floor)*

7:00 – 8:30 pm

### Student and Early Career Professionals (SECP) Reception

Students and early career professionals are invited to a sensational networking reception at no additional cost.

*Room: Clements  
(Suite Tower-2nd Floor)*

Co-sponsored  
by  
the  
Nisonger  
Center

**Announcing the blue and the green.**



ao is an Ann Cameron Williams venture.

[www.aostrategies.org](http://www.aostrategies.org)



**CHECK OUT OUR NEW EXHIBIT HALL GAME!**

**Solve the puzzle and you may win a prize.**

Visit participating exhibitors in the Exhibit Hall for clues, record your solution on the game piece from your registration envelope, and drop it in the barrel in the Exhibit Hall by 4:00 pm on Tuesday.

Prize winners will be drawn from pool of correct entries. List of prize winners will be posted in the Exhibit Hall Wednesday morning.

Many prizes will be awarded!



**Participating Exhibitors**

- ★ ResCare *SPONSOR!*
- ★ Therap *SPONSOR!*
- ★ ANCOR *SPONSOR!*
- ★ UMN RTC *SPONSOR!*
- ★ Relias Learning *SPONSOR!*
- ★ Commonwealth Council on Developmental Disabilities *SPONSOR!*
- ★ Silent Auction
- ★ AAIDD Bookstore

**Exhibit Hall Game Prizes**

- \$10 Starbucks Gift Cards (20 Prizes)
- \$50 American Express Gift Cards (15 Prizes)
- TruLink Portable USB Rechargeable Battery (2 prizes)
- AAIDD Book Pack (2 collections)
- Samsung Galaxy Note 10.1, 32 GB (1 Prize)

**Tuesday, June 2**

7:30 – 4:00 pm

**Exhibits Open—Visit All the Exhibits!**

8:00 – 9:00 am

**Continental Breakfast**

10:30 – 10:45 am

**Break Between Sessions**

12:15 – 1:45 pm

**Break Between Sessions**

3:15 – 3:30 pm

**Break Between Sessions**

**ENTER COMPLETED GAME PIECE BY 4:00 PM**

**Wednesday, June 3**

7:30 – 12 noon

**Exhibits Open—Visit All the Exhibits!**

8:45 – 9:15 am

**Exclusive Exhibit Time**

**LIST OF PRIZE WINNERS POSTED IN EXHIBIT HALL**

10:45–11:00 am

**Break Between Sessions**

12:00 noon

**Silent Auction Closes**

Pick up all items by 1:00pm

**SILENT AUCTION**

The Silent Auction proceeds benefit the Self-Advocacy Connection of Metro Louisville

*Special thanks to sponsors who provided prizes!*





If you are a Student or an Early Career Professional, you are particularly invited to join us for the following events:



## Sunday, May 31

8:00 – 9:00 pm

### President's Reception

*Room: Combs Chandler (Suite Tower-2nd Floor)*

## Monday, June 1

6:00 – 7:00 pm

### Louisville Waterfront Tour

*Ticket fee \$10*

Co-sponsored  
by  
IASSIDD

## Tuesday, June 2

7:00 – 8:30 pm

### Student and Early Career Professionals Networking Reception

*Room: Clements  
(Suite Tower-2nd Floor)*

Co-sponsored  
by the  
Nisonger  
Center

## Wednesday, June 3

12:00 – 1:00 pm

### Students and Early Career Professionals Lunch Meeting

*Lunch tickets required—  
Lunch fee \$15*

Limited tickets available  
at registration

*Room: Combs Chandler (Suite Tower-2nd Floor)*

Co-sponsored  
by The  
MENTOR  
Network

## SOCIAL MEDIA

### Keeping Up With AAIDD

#### CHECK OUT AAIDD ON FACEBOOK!



Like us on Facebook to connect with AAIDD and network with other disability professionals.

#### CHECK OUT AAIDD ON YOUTUBE!



You will find a wide variety of videos on topics ranging from the justice system and intellectual disability to special education best practices to classification and intellectual disability.

#### CHECK OUT AAIDD ON TWITTER!



Twitter is a great way to stay connected to AAIDD. We regularly post information about upcoming events and publications in addition to keeping you updated on the latest in national disability news.

#### CHECK OUT AAIDD ON LINKEDIN!



LinkedIn has the world's largest professional network on the internet with 161 million members. Joining our LinkedIn group is a great way to connect with professionals in the field you may not come into contact with otherwise.

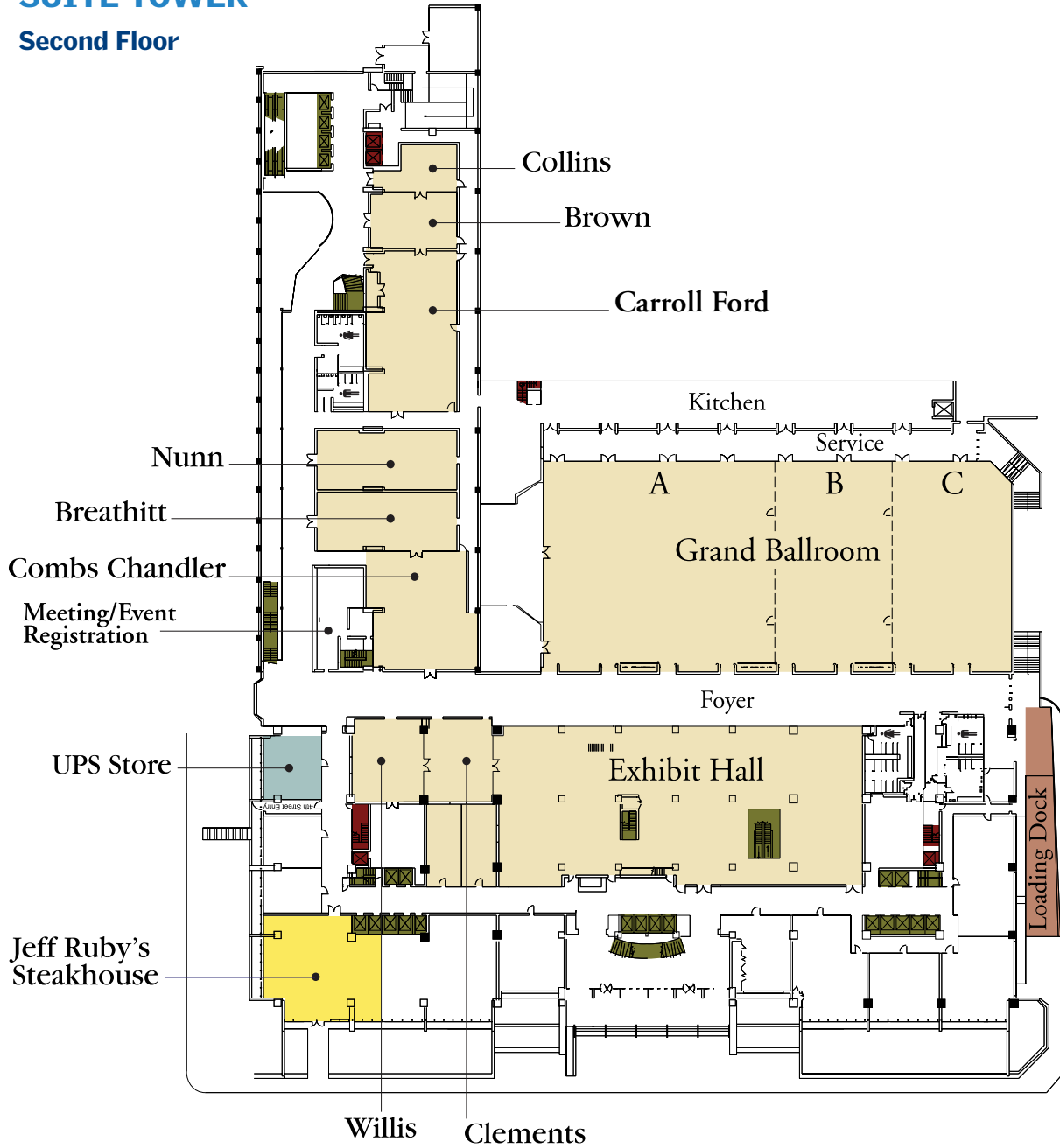
#### CHECK OUT AAIDD ON PINTEREST!



One of the newer social media platforms, Pinterest provides a space for users to organize and share images. We are continually building up content on our pinboards so you can share our images with others and spread the word about AAIDD news, events, and resources.

SUITE TOWER

Second Floor

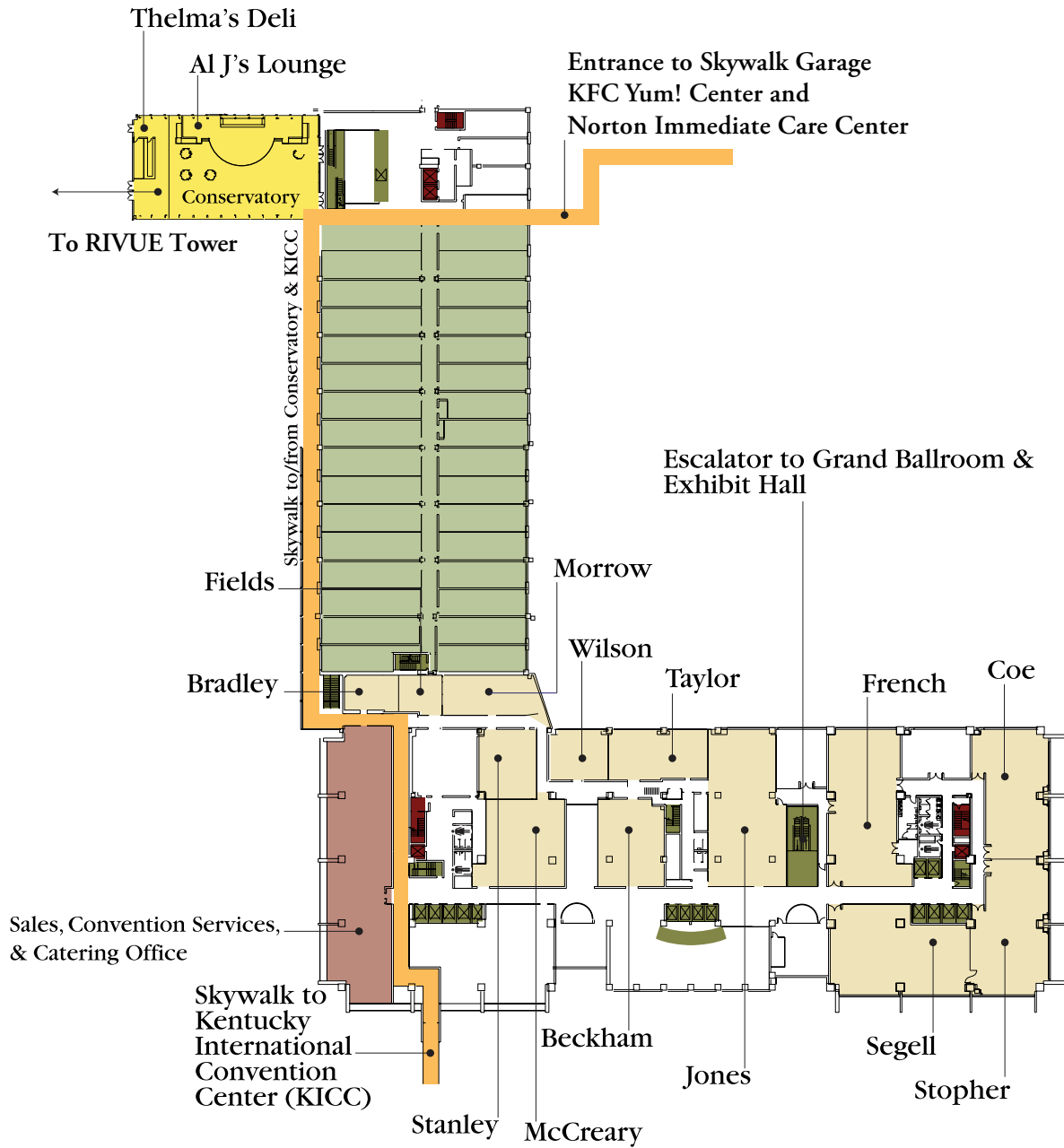


Retail		Guest Elevators, Stairs & Escalators		Escalator	
Meeting Rooms		Service Elevators & Stairs		Elevator	
Skywalk		Restaurants & Lounges		Men's Restroom	
Guest Rooms & Apartments		Stairs		Women's Restroom	



# SUITE TOWER

## Third Floor



AAIDD is pleased to be providing up to eight (8) hours of continuing professional education in both social work and psychology during most of the pre- and post- conference sessions at this year’s Annual Meeting.

*Psychologists: The University of Tennessee Health Science Center Boling Center for Developmental Disabilities is a co-sponsor of continuing education and has certified the pre and post conference offerings for up to eight (8) hours of continuing professional education for psychologists.*

*Social Workers: This program’s pre and post conference offerings are approved by the National Association of Social Workers (Approval #886593756-6171) for up to 8 Social Work continuing education contact ho*

To receive continuing education credits you must: 1) pay the \$30 CEU processing fee through registration, 2) have a room monitor sign off on your attendance card at the end of each session you attend and 3) complete and turn in a session evaluation.

Session	Psychology	Social Work
<b>MONDAY, JUNE 1   1:00 PM – 4:00 PM</b>		
Building a Culture of Direct Support Competence	3	3
Advances in Assessment for Children and Youth with Intellectual Disability	3	3
Siblings of People with IDD: Research, Practice and Policy	3	3
New CMS Waiver Regulations: Implementation Strategies for Providers and States	3	3
<b>WEDNESDAY, JUNE 3   4:00 PM – 6:00 PM (Complimentary)</b>		
Writing for Publication	2	2
<b>THURSDAY, JUNE 4   9:00 AM - 12:00 PM</b>		
Cultural Influences in People with IDD in a Multicultural Country	3	3
Current State of Research, Practice, & Policy of Community Health for Individuals with IDD	3	3

Grievance procedure and participant fee statement/refund policies are both available to all participants and may be located on the conference website at [www.aaid.org](http://www.aaid.org).



Morning

**MONDAY**

**Continental Breakfast**  
8:00 – 9:00 am

**Open Membership Meeting and Leadership Forum**  
9:00 – 10:00 am

**The Assembly The Conference**  
10:15 – 11:30 am

**Leadership Group Meetings Lunch**  
11:30 am – 1:00 pm

**TUESDAY**

**Continental Breakfast**  
8:00 – 9:00 am

**Leadership Group Business Meeting**  
7:30 – 8:30 am

**Exhibits Open**  
7:30 am – 4:00 pm

**New Attendees Meeting**  
8:00 – 8:30 am

**Opening Plenary Session**  
9:00 – 10:30 am

**Break**  
10:30 – 10:45 pm

**Concurrent Sessions A**  
10:45 – 12:15 pm

**Leadership Group Meetings Lunch**  
12:15 – 1:45 pm

**WEDNESDAY**

**Leadership Group Business Meetings**  
7:00 – 8:00 am

**Exhibits Open**  
7:30 am – 12:00 pm

**Awards Breakfast**  
8:00 – 8:45 am

**Exclusive Exhibit Time**  
8:45 – 9:15 am

**Plenary Session**  
9:15 – 10:45 am

**Break**  
10:45 – 11:00 am

**Concurrent Sessions D**  
11:00 am – 12:00 noon

**Lunch on your own**  
12:00 noon – 1:00 pm

**THURSDAY**

**Continental Breakfast**  
8:00 – 9:00 am

**Religion & Spirituality Division Forum**  
9:00 am – 12:00 noon

**Post-Conference Sessions**  
9:00 am – 12:00 pm

Afternoon

**Pre-Conference Sessions**  
1:00 – 4:00 pm

**Concurrent Sessions B**  
1:45 – 3:15 pm

**Break**  
3:15 – 3:30 pm

**Concurrent Sessions C**  
3:30 – 5:00 pm

**Concurrent Sessions E**  
1:00 – 2:00 pm

**Break**  
2:00 – 2:15 pm

**Closing Plenary Session**  
2:15 – 3:45 pm

Evening

**Focus on the Death Penalty and ID**  
4:30 – 5:30 pm

**Louisville Waterfront Tour**  
6:00 – 7:00 pm

**Poster Sessions and Reception**  
5:00 – 7:00 pm

**Publications Reception**  
7:00 – 8:30 pm

**Student and Early Career Professionals Networking Reception**  
7:00 – 8:30 pm

**Complimentary Post Conference Sessions**  
4:00 – 6:00 pm

## Sunday, May 31

5:00 pm – 8:00 pm

### Board of Directors Meeting

**Presiding:**

*Amy Hewitt, PhD, President, AAIDD Board of Directors*

8:00 pm – 9:00 pm

### President's Reception

Open to all conference attendees at no additional cost.

*Room: Combs Chandler (Suite Tower–2nd Floor)*

## Monday, June 1

**Registration**  
8:00 am – 5:30 pm

8:00 – 9:00 am

### Complimentary Continental Breakfast

*Room: Combs Chandler (Suite Tower–2nd Floor)*

9:00 – 10:00 am

### Annual Open Membership Meeting and Leadership Forum

**Presiding:**

*Amy Hewitt, PhD, FAAIDD, President, AAIDD Board of Directors*

*Room: Combs Chandler (Suite Tower–2nd Floor)*

10:15 – 11:30 am

### The Assembly of Geographic Interests

**Presiding:**

*William Gaventa, Jr., MDiv, FAAIDD, Vice President, AAIDD Board of Directors*

*Room: Breathitt (Suite Tower–2nd Floor)*

10:15 – 11:30 am

### The Conference of Professional Interests

**Presiding:**

*Susan Palmer, PhD, FAAIDD, President-Elect, AAIDD Board of Directors*

*Room: Nunn (Suite Tower–2nd Floor)*

11:30 am – 1:00 pm

### Lunch

*Fee \$20*

Lunch is available to all attendees. Limited number of tickets are available at the registration desk.

*Room: Carroll Ford (Suite Tower–2nd Floor)*

## PRE CONFERENCE SESSIONS

*Continuing Education: Approved for 3 NASW (Social Work) and 3 APA (Psychology) units.*

1:00 – 4:00 pm

### Building a Culture of Direct Support Competence

*Fee: \$45*

*Joseph M. Macbeth, National Alliance for Direct Support Professionals (NADSP)*

*John Raffaele, MSW, Direct Support Professional Consultant Group LLC*

*Carol Britton Laws, PhD, MSW, University of Georgia*

Practitioners of every profession are guided by three common elements: knowledge, skills, and values. Direct support should be no exception. In fact, it is the competence of direct support professionals that often determines the quality of supports provided by an organization. This session will share suggestions on how to build a "culture of competence" in an organization by increasing understanding of direct support as a professional workforce and by using tools that were developed by the NADSP including the Code of Ethics, nationally validated competencies and skill standards, credentialing, and career ladders.

*Room: Morrow (Suite Tower–3rd Floor)*

1:00 – 4:00 pm

### Advances in Assessment for Children and Youth with Intellectual Disability

*Fee \$45*

*James R. Thompson, PhD, FAAIDD, Illinois State University*

*Meagan Karvonen, PhD, University of Kansas*

*Mariel Zeller, MS, University of Kansas*

This workshop will provide an overview of two contemporary approaches to assessment: the Dynamic Learning Maps (DLM) Alternate Assessment System and the Supports Intensity Scale–Children's Version (SIS-C).

The DLM was developed to address the concern that many students with intellectual disability were excluded from large-scale assessments in the schools; and therefore without a valid means to measure their progress in the general education curriculum. Attendees will learn how the DLM is designed, how it provides an avenue for students with significant cognitive disabilities to demonstrate their learning, and how assessment results can be used to inform instruction.

The SIS-C was developed to provide professionals a standardized tool to understand children by their support needs, and there is no other assessment tool or process that provides this information. Attendees will receive an overview of SIS-C subscales and items, the semi-structured interview process used to complete the assessment, how the standard scores are generated and interpreted, and highlights of the ways in which SIS-C results can be used to inform instruction.

*Room: Willis (Suite Tower–2nd Floor)*



1:00 – 4:00 pm

**Siblings of People with IDD: Research, Practice and Policy**

Fee \$45

*Katie Arnold, MS, Sibling Leadership Network (SLN)**Meghan Burke, PhD, University of Illinois at Champaign-Urbana*

The family unit is an interconnected web of parents, siblings, and people with disabilities. Siblings often share the longest relationship of their lives with each other, and often become caregivers for their brothers and sisters with IDD when parents are no longer able to fill this role. The Sibling Leadership Network (SLN) is a national nonprofit organization created to provide sibling-targeted information and support.

This session will focus on research, practice and policy related to brothers and sisters of individuals with IDD. Attendees will receive an overview of sibling research, including the challenges, gaps and future directions in research related to siblings. The history of the sibling movement, and its relation to the larger family and disability rights movement in the United States, will be discussed. We will highlight the perspective of self-advocates regarding the support they receive from their siblings and family members, discuss ways to engage siblings in policy and advocacy efforts, and conclude with future directions of the sibling movement.

*Room: Fields (Suite Tower-3rd Floor)*

1:00 – 4:00 pm

**New CMS Waiver Regulations: Implementation Strategies for Providers and States**

Fee \$45

*Cathy Ficker Terrill, MS, FAAIDD, Council on Quality and Leadership**Valerie J. Bradley, MA, FAAIDD, Human Services Research Institute**Lori Sedlezky, MSW, University of Minnesota**Elizabeth Pell, MSW, Human Services Research Institute**Laura Vegas, MS, Tennessee Department of Intellectual and Developmental Disabilities*

Attendees will learn about the relationship between the Medicaid Waiver regulations and the related performance metrics in the National Core Indicators (NCI), CQL Basic Assurances and the Person Outcome Measures (POM). Participants will be provided with strategies for implementation and compliance with the new regulations and where to find additional information. Participants will learn about data related to trends in employment, community participation, and building networks in communities. Participants will learn how one state is using the NCI and POM data to drive quality assurance. Participants will learn about various state implementation plans.

*Room: Stanley (Suite Tower-3rd Floor)*

## COMPLIMENTARY PRECONFERENCE SESSION

4:30 – 5:30 pm

**Focus on the Death Penalty****Moderator:***Joanna Pierson, PhD, FAAIDD, The Arc of Frederick County***Panelists:***Margaret A. Nygren, EdD, AAIDD**Edward A. Polloway, PhD, FAAIDD, Lynchburg College**Marc J. Tassé, PhD, FAAIDD, The Ohio State University**Gregory Olley, PhD, FAAIDD, University of North Carolina-Chapel Hill*

This session will provide an overview of AAIDD's leadership in addressing issues concerning intellectual disability in capital cases. The Association has played a significant role in court decisions with its amicus curiae briefs and has just published the authoritative resource on this topic, *The Death Penalty and Intellectual Disability*.

Books will be available for purchase and signing.

Open to all attendees at no additional cost.

*Room: Combs Chandler (Suite Tower-2nd Floor)*

6:00 – 7:00 pm

**Louisville Waterfront Tour**

All attendees are invited to join us in this Waterfront Tour on the *Spirit of Jefferson*.

Cost \$10

Limited seating, limited number of tickets available at the registration desk.

Meet in the Lobby area at 5:45 pm



Co-sponsored  
by  
IASSIDD

7:30 – 8:30 pm

**Local Arrangements Committee Reception***By invitation only*

## Tuesday, June 2

### Registration

7:00 am – 5:00 pm

### EXHIBITS OPEN from 7:30 am – 4:00 pm

Complimentary Continental Breakfast available from 8:00 am – 9:00 am.

For a complete list of Exhibitors, see pages 43–46.

For a list of activities and prizes in the Exhibit Hall, see page 8.

*Room: Exhibit Hall*

### LEADERSHIP GROUP BUSINESS MEETINGS

7:30 – 8:30 am

#### Family Special Interest Group

**Presiding:**

*Thomas Fish, PhD, FAAIDD*

*Room: Bradley (Suite Tower–3rd Floor)*

7:30 – 8:30 am

#### Health and Wellness Action Group (HWAG)

**Presiding:**

*Melissa A. DiSipio, MSA, FAAIDD, and Larry Gray, MD*

*Room: Willis (Suite Tower–2nd Floor)*

7:30 – 8:30 am

#### International Special Interest Group

**Presiding:**

*Marco Lombardi, MS, and Maria Carbó-Carrete, PhD*

*Room: Clements (Suite Tower–2nd Floor)*

7:30 – 8:30 am

#### Student and Early Career Professionals SIG

**Presiding:**

*Sarah Hall, PhD, and Kim Wolowiec-Fisher, PhD*

*Room: Wilson (Suite Tower–3rd Floor)*

7:30 – 8:30 am

#### Gerontology Division

**Presiding:**

*Nicole Cadovius, MBA, MSM, FAAIDD*

*Room: Brown (Suite Tower–2nd Floor)*

8:00 – 8:30 am

#### Orientation for First Time Annual Meeting Attendees

**Presiding:**

*Amy S. Hewitt, PhD, FAAIDD, President, AAIDD Board of Directors*

If this is your first AAIDD Annual Meeting, please join us for an orientation.

*Room: Nunn (Suite Tower–2nd Floor)*

### OPENING PLENARY SESSION

9:00 am – 10:30 am

#### OPENING SESSION

**Welcome:**

*Amy S. Hewitt, PhD, FAAIDD*

*President, AAIDD Board of Directors*

#### PLENARY SESSION

#### What Do We Know from Research, Practice, & Policy

**Moderator:**

*Susan Palmer, PhD, FAAIDD*



*Steve F. Warren, PhD, FAAIDD  
Professor of Speech-Language-Hearing:  
Sciences and Disorders Investigator,  
Life Span Institute of the University  
of Kansas Law*



*Robin A. Jones  
Project Director, Great Lakes ADA  
and Accessible IT Center*



*Michael L. Wehmeyer, PhD, FAAIDD  
Director, Kansas University Center on  
Developmental Disabilities  
Senior Scientist and Director, Beach  
Center on Disability at the University  
of Kansas*

*Room: Grand Ballroom A (Suite Tower–2nd Floor)*

10:30 am – 10:45 am

#### Coffee Break in the Exhibit Hall

## CONCURRENT SESSIONS A

10:45 am – 12:15 pm

## YOUTH WITH AUTISM

**Moderator:***Ann Cameron Williams, PhD, AO Strategies***Peer Victimization of Students with Autism: Changing Awareness to Change Behaviors***Marisa H. Fisher, PhD, Michigan State University***Teaching Adolescents with Autism Spectrum Disorder to Reject Peer Pressure***Marisa H. Fisher, PhD, Michigan State University**Mari MacFarland, MA, Michigan State University**Josh Plavnick, PhD, Michigan State University**Room: Jones (Suite Tower-3rd Floor)*

## FAMILY, CULTURE, FAITH, &amp; OUTCOMES

**Moderator:***Ellis (Pat) Craig, PhD, FAAIDD, Chair, AAIDD Multicultural Concerns SIG***Impact of Culture on Expectations for and Knowledge of Competitive Employment for People with Disabilities***Judith Gross, PhD, FAAIDD, University of Kansas**Grace Francis, PhD, University of Missouri-St. Louis***Putting Faith to Work: Exploring New Possibilities within Old Traditions***Milton Tyree, University of Kentucky**Erik W. Carter, PhD, FAAIDD, Vanderbilt University**Derek Nord, PhD, University of Minnesota**William C. Gaventa, MDiv, FAAIDD, National Collaborative on Faith and Disability***Spiritual Supports and Public Policy: Resources and Best Practices for Addressing Person-Centered and Cultural Preferences in both CMS Regulations and CQL Outcomes***Shelly Christensen, MA, Inclusion Innovations**David Morstad, MEd, FAAIDD, The Bethesda Institute**Deborah M. Fisher, PsyD, Jewish Foundation for Group Homes, Inc.**William C. Gaventa, MDiv, FAAIDD, Summer Institute on Theology and Disability***On Faith and Flourishing: Research at the Intersection of Religion, Spirituality, and Intellectual Disability***Erik W. Carter, PhD, FAAIDD, Vanderbilt University**Thomas Boehm, MEd, MDiv, Vanderbilt University**Elizabeth Biggs, MEd, Vanderbilt University**Room: Nunn (Suite Tower-2nd Floor)*

## QUALITY OF SUPPORT AND QUALITY OF LIFE

**Moderator:***James R. Mullin, MEd, FAAIDD, Chair, AAIDD Humanist Action Group***Content Analysis of Service Quality Experience***Wil Buntinx, PhD, FAAIDD, Maastricht University and Gouverneur Kremers Centre**Joost Tan, MA, Maastricht University and Gouverneur Kremers Centre**Marjolein Herps, MA, Maastricht University and Gouverneur Kremers Centre**Leopold Curfs, Maastricht University and Gouverneur Kremers Centre***Content Analysis of Individual Support Plans in The Netherlands***Marjolein Herps, MA, Maastricht University and Gouverneur Kremers Centre**Wil Buntinx, PhD, FAAIDD, Maastricht University and Gouverneur Kremers Centre**Robert L. Schalock, PhD, FAAIDD, Schalock & Associates**Gerard Van Breukelen, Maastricht University***Individual Support Plans: Enhancing Personal Outcomes***Jos Van Loon, PhD, Arduin and Ghent University**James R. Thompson, PhD, FAAIDD, Illinois State University**Room: French (Suite Tower-3rd Floor)*

## WOMEN'S REPRODUCTIVE HEALTH

**Moderator:***Larry Gray, MD, Co-Chair, AAIDD Health and Wellness Action Group***Cervical Cancer Screening Needs and Experiences of Women with Intellectual and Developmental Disabilities***Nicole I. Economou, Boston University School of Medicine**Nechama W. Greenwood, MA, Boston University/Boston Medical Center**Lindsay Beamon, Boston University School of Medicine**Joanne Wilkinson, MD, Boston University/Boston Medical Center***Delivering Media Based Breast Cancer Screening Interventions to Women with Intellectual Disabilities and Their Supporters***Nechama W. Greenwood, MA, Boston University/Boston Medical Center**Samantha Shrager, Boston University/Boston Medical Center**Nazifa Abdul Rauf, Boston University/Boston Medical Center**Grace Erinah Namirembe, Boston University/Boston Medical Center*



Tuesday, June 2 (continued)

**Reproductive Cancer Treatment Hospitalizations of US Women with Intellectual and Developmental Disabilities**

Susan Parish, PhD, FAAIDD, Brandeis University  
 Esther Son, PhD, College of Staten Island  
 Leah Igdalsky, Brandeis University

Room: Segell (Suite Tower-3rd Floor)

**PERSON CENTERED PLANNING FOR EMPLOYMENT**

**Moderator:**

Yvette Evans, PhD, Co-Chair, AAIDD Communications Disorders Division

**Promoting Employment for People with ID Using Self-Determination**

Evan Dean, University of Kansas Medical Center  
 Anna Wallisch, University of Kansas Medical Center

**Using Person Centered Planning Tools to Leverage Talent and Passion into High Quality Employment for Individuals with IDD**

Anthony Rodriguez, PhD, Providence College  
 Lori Norris, MA, Center for Excellence & Advocacy  
 Ken Renaud, MA, Fedcap Rehabilitation Services, Inc.

**Transition Programming for Youth with Disabilities: Moving Success Across State Lines**

Natalie Stollon, MSW, The Children's Hospital of Philadelphia  
 Symme Trachtenberg, MSW, The Children's Hospital of Philadelphia

Jamie DiIanni, MS, The Children's Hospital of Philadelphia  
 Room: Beckham (Suite Tower-3rd Floor)

**ACHIEVING OPTIMAL EDUCATION OUTCOMES**

**Moderator:**

Amy Rosenstein, PhD, Co-Chair, AAIDD Education Division

**Time for a New IDEA: An Optimal Not a Restrictive Environment, Levels Not Labels...?**

James Knoll, PhD, Morehead State University

**Utilizing a Support Needs Assessment and Problem-Solving Process in K-12 Schools**

Stephanie DeSpain, MS, Illinois State University  
 Virginia Walker, PhD, Illinois State University  
 Carolyn Hughes, PhD, FAAIDD, Queens College  
 James R. Thompson, PhD, FAAIDD, Illinois State University

**Fostering Strong School-Community Partnerships for the Benefit of Positive Student Outcomes**

Judith Gross, PhD, FAAIDD, University of Kansas  
 Room: Breathitt (Suite Tower-2nd Floor)



12:15 - 1:45 pm

**Lunch**

Lunch is available for purchase to all attendees—limited number of lunch tickets available at the registration desk.

Fee \$20 Room: Carroll Ford (Suite Tower-2nd Floor)

12:15 - 1:45 pm

**Refreshments in the Exhibit Hall**

Don't forget to participate in the game to win a prize.

12:15 - 1:45 pm

**LEADERSHIP GROUPS LUNCH MEETINGS**

The following leadership groups will meet over lunch.

Ticket required (lunch fee \$20)

**Community Services Division:**

**"Sharing Ideas on Including in their Communities for Meaningful Days"**

Presiding:  
 Joanna Pierson, PhD, FAAIDD, and Matt Morgan

**Education Division**

Presiding:  
 Amy Rosenstein, PhD, and Mary Pearson, PhD

**Mental Health Services SIG**

Presiding:  
 Vincent M. Chesney, MS, FAAIDD

**Religion and Spirituality Division**

Presiding:  
 Shelly Christensen, MA

Room: Carroll Ford (Suite Tower-2nd Floor)

## CONCURRENT SESSIONS B

1:45 – 3:15 pm

**PARENT ADVOCACY IN K-12 EDUCATION****Moderator:**

Kimberly Wolowiec-Fisher, PhD, Co-Chair, AAIDD Student and Early Career Professionals SIG

**Special Education Advocacy Training Program: Program Overview, Lifespan Adaptation, and Cross-Cultural Modification**

Chun-yu Chiu, PhD, National Taipei University of Education

Meghan Burke, PhD, University of Illinois at Urbana-Champaign

Samantha Goldman, MEd, Vanderbilt University

**Sustained Volunteering in Special Education Advocates**

Samantha Goldman, MEd, Vanderbilt University

Meghan Burke, PhD, University of Illinois at Urbana-Champaign

Carrie Mason, JD, Vanderbilt University

Robert Hodapp, PhD, Vanderbilt University

Room: Beckham (Suite Tower-3rd Floor)

**CULTIVATING LEADERS FOR THE FIELD****Moderator:**

Sarah Hall, PhD, Co-Chair, AAIDD Student and Early Career Professionals SIG

**Preparing Organizations for a Successful Future: Involving Students as Leaders**

Stephanie Weber, PsyD, Cincinnati Children's Hospital Medical Center

Elaine Eisenbaum, MSW, University of Texas at Austin

Laurel Geist, MA, The Ohio State University

**Physician and Resident Education in Developmental Disabilities**

Matt Holder, MD, American Academy of Developmental Medicine and Dentistry

Holly Hohmeister, MS, Florida Developmental Disabilities Council

**How Do We Provide Training in Modern Agencies? Findings from a National Survey of Service Providers**

Gerald McCleery, PhD, Relias Learning

James Conroy, PhD, FAAIDD, Center for Outcome Analysis

Steve Devlin, PhD, Center for Outcome Analysis

Room: Jones (Suite Tower-3rd Floor)

**Congratulations to our Student Scholarships Winners**

**Student & Early Career Professional SIG**

- Aleksa Owen, MSW, University of Illinois
- Anna Mumford, MA, RMIT University

**Psychology Division**

- Margaret Mehling, MA, The Ohio State University
- Julie Maltais, Université du Québec à Montréal

**Health and Wellness Action Group**

- Evelyn Arana, MS, Drexel University School of Public Health

**Mental Health Services SIG**

- Gitta de Vaan, MS, Radboud University Nijmegen

**Congratulations to our Newest Fellows**

- Elaine C. Brown, PhD
- Nicole Cadovius, MBA, MSM
- Erik W. Carter, PhD
- Guy A. Caruso, PhD
- Judith M.S. Gross, PhD
- Patti N. Martin, MEd
- David Morstad, MEd
- Susan E. Percy
- Frank Symons, PhD
- Maria G. Valdovinos, PhD

New Fellows will be recognized during the Awards Breakfast on Wednesday morning.

Please stop by the

**AAIDD Bookstore**

located in the Exhibit Hall to examine our new AAIDD books and journals!







ResCare is proud to support AAIDD in promoting progressive policies, sound research, effective practices, and universal human rights for people with intellectual and developmental disabilities.

We believe people should live as independently as possible. Our job is to help them reach their highest level of independence. ResCare provides innovative and industry-changing supports to people with developmental, intellectual, and cognitive disabilities:

- HUD locations - lower living expenses
- Rest Assured®
- Group home and individual apartment services
- Supported Employment
- Case management
- Wellness monitoring
- Assistance with medication administration
- Transportation
- Community access programs

[ResCare.com](http://ResCare.com) | (800) 866.0860



## rtc on community living



*We are proud to sponsor*

### **AAIDD's Annual Meeting**

Stop by our booth or visit us at [rtc.umn.edu](http://rtc.umn.edu)!

UNIVERSITY OF MINNESOTA  
**Driven to Discover**<sup>SM</sup>



Tuesday, June 2 (continued)

## DUAL DIAGNOSIS

### Moderator:

Vincent Chesney, MS, FAAIDD, Chair, AAIDD Mental Health Services SIG

### Mental Health Diagnoses and Behavioral Problems Among Individuals with Intellectual Disability: Assessing Prevalence Across Levels of Services and Supports

Kami Gallus, PhD, Oklahoma State University

Jennifer Jones, PhD, Oklahoma State University

Clinton Broadbent, PhD, Oklahoma State University

Natalie Richardson, Oklahoma State University

### The NADD Accreditation Certification Program (ACP): Raising the Bar to Make a Difference

Robert Fletcher, DSW, NADD

### Treating Individuals with Intellectual Disability and Challenging Behaviors with Adapted Dialectical Behavior Therapy

Julie Brown, MSW, PhD, Justice Resource Institute

### "It's all in Between your Ears!" Cognitive Biases in Problematic Drinkers with Mild to Borderline Intellectual Disability

Neomi Van Duijvenbode, MS, Radboud Universiteit Nijmegen

Robert Didden, PhD, Radboud University Universiteit/Trajectum

Rutger Engels, PhD, Radboud University Universiteit/Trimbos Institute

Room: French (Tower Suite-3rd Floor)

## HEALTH DISPARITIES

### Moderator:

Melissa DiSipio, MSA, FAAIDD, Co-Chair, AAIDD Health and Wellness Action Group

### The Persistence Health Care Access Disparities Among Latino and White Children with Autism and Other Developmental Disabilities

Susan Parish, PhD, FAAIDD, Brandeis University

Sandra Magaña, PhD, University of Illinois at Chicago

Esther Son, PhD, College of Staten Island/City University of New York

Leah Igdalsky, Brandeis University

### What are the Disparities in Health Related to Lifestyle Habits and Weight Status Between People with and Without Intellectual Disability in Quebec?

Julie Maltais, PsyD, Université du Québec à Montréal

Diane Morin, PhD, Université du Québec à Montréal

### Health Disparities Among Latino and non-Latino Black Adults with Intellectual and Developmental Disabilities: An Analysis of National Data

Sandra Magaña, PhD, University of Illinois at Chicago

Miguel Morales, MPH, University of Illinois at Chicago

Henan Li, MA, University of Illinois at Chicago

Susan Parish, PhD, FAAIDD, Brandeis University

Room: Nunn (Suite Tower-2nd Floor)

## ADVOCACY AND DECISION MAKING

### Moderator:

Holly Riddle, JD, Chair, AAIDD Legal Process & Advocacy Division

### National Resource Center for Supported Decision-Making: Preliminary Developments and Outcomes

Tina Campanella, MA, Quality Trust for Individuals with Disabilities

Jonathan Martinis, JD, Quality Trust for Individuals with Disabilities

Michael Wehmeyer, PhD, FAAIDD, University of Kansas

### Voice & Advocacy—Complexities of the Guardian's Role

Alya Reeve, MD, University of New Mexico

Eula Michaels, University of New Mexico

### System Change to Promote Rights: National Core Indicators Data and a Supported Decision Making Initiative

Elizabeth Pell, MSW, Human Services Research Institute

Deborah A. Dorfman, JD, Center for Public Representation

Paige Emerson, SDM Pilot Advisory Council

Amanda Benoit, SDM Participant

Maggy Walto, MS, Nonotuck Resource Associates

Room: Breathitt (Suite Tower-2nd Floor)

## POST SECONDARY EDUCATION

### Moderator:

Cathy Ficker Terrill, MS, FAAIDD, The Council on Quality and Leadership

### Expanding Comprehensive Services and Collaborative Partnerships for Individuals with Intellectual and Developmental Disabilities in a College Community

Kelly Kelley, PhD, Western Carolina University

Leigh Angel, MSN, Western Carolina University

Jennifer Hinton, PhD, Western Carolina University

Jay Manalo, PhD, Western Carolina University

### Supported Higher Education: New Opportunities

Barry Whaley, MS, University of Kentucky

Elizabeth Harrison, PhD University of Kentucky

Tuesday, June 2 (continued)

**Utilizing Universal Instructional Design Strategies through Post-Secondary Online Learning Management Systems to Increase Inclusion in Associate and Bachelor Degree Programs for Students with Intellectual and Developmental Disabilities**

Melissa Smiley, MS, University of Wisconsin Colleges Online  
Room: Segell (Tower Suite-3rd Floor)

3:15 – 3:30 pm

Coffee Break in the Exhibit Hall

CONCURRENT SESSIONS C

3:30 – 5:00 pm

**MEASUREMENT & ASSESSMENT IN AUTISM**

**Moderator:**

Melinda Snodgrass, MS, Co-Chair, AAIDD Communications Disorders Division

**Autism Spectrum Disorder Severity Levels in DSM-5: Conceptualization and Measurement**

Margaret Mehling, MA, The Ohio State University  
Marc J. Tassé, PhD, FAAIDD, The Ohio State University

**OASID, a New Instrument for Diagnosing Autism Spectrum Disorder in People with Multiple Disabilities**

Gitta de Vaan, MS, Radboud Universiteit Nijmegen  
Mathijs Vervloed, PhD, Radboud Universiteit Nijmegen  
Harry Knoors, PhD, Radboud Universiteit Nijmegen  
Ludo Verhoeven, PhD, Radboud Universiteit Nijmegen  
Room: Breathitt (Suite Tower-2nd Floor)

**CHANGING FAMILIES**

**Moderator:**

Larry Weishaar, Co-Chair, Conference Local Arrangements Committee

**Gaining a Better Understanding of Services Offered to Individuals with IDD Living at Home with Families**

Faythe Aiken, Human Services Research Institute  
Yoshiko Kardell, MSW, Human Services Research Institute

**Sibling Relationships: Differing Roles of Adults who have Siblings with Mild-Moderate and Severe-Profound IDD**

Sarah Hall, PhD, Ashland University  
Zachary Rossetti, PhD, Boston University

**Caregiving, Services, and Advocacy Among Siblings of Individuals with Intellectual and Developmental Disabilities**

Meghan Burke, PhD, University of Illinois at Urbana-Champaign  
Katie Arnold, MS, Sibling Leadership Network  
Thomas Fish, PhD, FAAIDD, The Ohio State University  
John Kramer, PhD, University of Massachusetts-Boston  
Room: Jones (Tower Suite-3rd Floor)

**QUALITY OF LIFE DATA & TRENDS**

**Moderator:**

Shelly Christensen, MA, Chair, AAIDD Religion & Spirituality Division

**Identifying Key Quality of Life and Provider Characteristics that Should Form the Core of Quality Measurement and Quality Improvement Initiative at the Federal, State and Local Levels**

Valerie Bradley, MA, FAAIDD, Human Services Research Institute  
Sue Kelly, PhD, Delmarva Foundation  
Drew Smith, MBA, The Council on Quality and Leadership

**The Impact of The Quality of Life Concept on Research, Policy, and Practice**

Robert Schalock, PhD, FAAIDD, Schalock & Associates  
Claudia Claes, PhD, Ghent University  
Frank Lobler, Sozialwerk St. Georg  
Laura Gomez, PhD, Universidad de Oviedo  
Room: French (Tower Suite-3rd Floor)

**SOCIAL INCLUSION**

**Moderator:**

Sharon Gomez, FAAIDD, Co-Chair, AAIDD Administration Division

**Friendship Matters! Improving Health and Well-Being by Supporting Friendship**

Elizabeth Pell, MSW, Human Services Research Institute  
Angela Novak Amado, PhD, University of Minnesota  
Kim Zoeller, MPA, Ray Graham Association

**A Systematic, State-Wide Initiative to Expand Community Relationships, Belonging and Membership**

Angela Novak Amado, PhD, University of Minnesota  
Barbara Locker, MS, University of Kentucky  
Tina M. Scott, MA, A-1 Case Management Services  
Karen Gardner, MA, Tri-Generations, LLC

**Social Relationships of Individuals with Intellectual Disability**

Mark McManus, PhD, University of Akron  
Room: Segell (Suite Tower-3rd Floor)

**TRANSITION TO EMPLOYMENT**

*Moderator: Colleen McLaughlin, MEd, Co-Chair, AAIDD  
Direct Support Professionals Division*

**Longitudinal Outcomes of Project SEARCH in Upstate New York**

*Julie Christensen, PhD, University of Rochester  
Susan Hetherington, PhD, University of Rochester  
Maryellen Daston, PhD, Cincinnati Children's Hospital Medical Center  
Erin Riehle, MSN, Cincinnati Children's Hospital Medical Center*

**Promoting Integrated Employment for Individuals with Intellectual Disability in Qatar**

*Nidal el-Kazimi, PhD, Shafallah Center for Children with Special Needs*

**The Graduation Cliff or Rays of Change: Arizona Adolescents' and Parents' Perspectives on Transition**

*Kimberly Wolowiec-Fisher, PhD, Arizona State University  
Erica McFadden, PhD, Arizona State University  
Sang-Eun Lee, MS, Arizona State University  
David Daughtery, PhD, Arizona State University  
Room: Nunn (Suite Tower-2nd Floor)*

**AAIDD Publications Reception**

**7:00 pm – 8:30 pm**

*Open to all conference attendees at no additional cost.*

Join us at a reception featuring AAIDD's journal editors and book authors. Meet your favorite editors and authors in a cocktail party atmosphere.

*Room: Willis (Suite Tower-2nd Floor)*

**Student and Early Career Professionals Networking Reception**

**7:00 pm – 8:30 pm**

Collegial networking event for students and early career professionals

*Room: Clements (Suite Tower-2nd Floor)*

**Co-sponsored by the Nisonger Center**

**PROFESSIONAL DEVELOPMENT IN SPECIAL EDUCATION**

*Moderator: Loui Lord Nelson, PhD, FAAIDD, Raise, Inc.*

**Supporting and Supervising Paraprofessionals: A Framework for Strengthening Working Relationships Between Special Education Teachers and Paraprofessionals**

*Elizabeth Biggs, MA, Vanderbilt University  
Carly Blustein, MEd, Vanderbilt University  
Erik W. Carter, PhD, FAAIDD, Vanderbilt University*

**Teacher Candidate Knowledge and Skills Needed to Teach P-12 Students with Significant Disabilities: How to Develop a Meaningful Standards-based Assessment Rubric**

*Amy Rosenstein, PhD, Eastern Illinois University  
Room: Beckham (Suite Tower-3rd Floor)*

**Poster Session and Reception**

**5:00 pm – 7:00 pm**

Refreshments and cash bar.

For a list of poster sessions please see pages 33-41.

*Room: Grand Ballroom B&C (Suite Tower-2nd Floor)*

**Meet our newly elected members of the Board of Directors**

**Susan M. Havercamp,**  
PhD, FAAIDD  
Vice President



**Melissa A. DiSipio,**  
MSA, FAAIDD  
Member-at-Large



# Accreditation Matters



Accreditation assures the persons served, funders, and partners that an organization is committed to continually improving services, encouraging feedback, and serving the community.

**Program Areas:**

- Community Employment Services
- Community Housing
- Community Integration
- Employee Development Services
- Employment Planning Services
- Employment Skills Development
- Supported Living
- Respite Services
- Services Coordination
- Behavioral Consultation
- Assistive Technology
- Child and Youth Services
- Support Services for Autism Spectrum Disorder

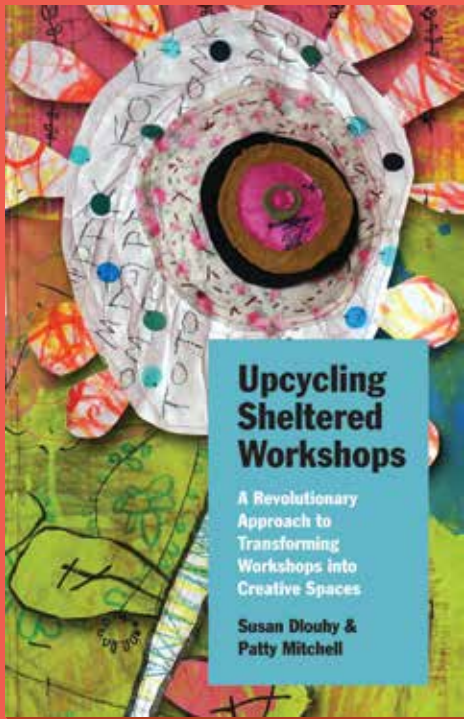
Scan the QR code to see full program descriptions



To learn more about CARF and how accreditation can help your organization, email [ecs@carf.org](mailto:ecs@carf.org) or call (888) 281-6531.

**carf** INTERNATIONAL

[www.carf.org](http://www.carf.org)



## UPCYCLING SHELTERED WORKSHOPS

*A Revolutionary Approach to Transforming Workshops into Creative Spaces*

By Susan Dlouhy and Patty Mitchell  
With a foreword by  
Dr. Lynn M. Harter

At a time when the traditional sheltered workshop model has fallen under rightful criticism, and a new paradigm for disability programming is not yet in place, *Upcycling Sheltered Workshops* offers a revolutionary alternative. As many push to dismantle sheltered workshops, Susan Dlouhy and Patty Mitchell present the **Creative Abundance Model**, a proven method that redirects sheltered workshops from routine to creativity, putting participants in the driver's seat.

Visit [norwichcs.com](http://norwichcs.com) to book trainings and presentations.

Paperback · \$18.95 · 120 pages  
5.5 × 8.5 in. · 35 color photos  
Also available in ebook formats



**OHIO  
UNIVERSITY  
PRESS**

**SWALLOW  
PRESS**

# Wednesday, June 3

## Registration Hours

7:00 am – 3:00 pm

## Exhibits Open

7:30 am – 12:00 noon

### LEADERSHIP GROUP BUSINESS MEETINGS

7:00 – 8:00 am

#### Humanist Action Group: "Discussion of the Ham-Nye Debate"

Presiding: James R. Mullin, MEd, FAAIDD

Room: Brown (Suite Tower-2nd Floor)

7:00 – 8:00 am

#### Region IV Meeting

Presiding: Cordelia Robinson Rosenberg, PhD, RN, FAAIDD

Room: Willis (Suite Tower-2nd Floor)

7:00 – 8:00 am

#### Multicultural SIG

Presiding: Ellis (Pat) Craig, PhD

Room: Clements (Suite Tower-2nd Floor)

7:00 – 8:00 am

#### Communication Disorders Division

Presiding: Melinda Snodgrass, MEd

Room: Stanley (Suite Tower-3rd Floor)

7:00 - 8:00 am

#### Legal Process and Advocacy Division

Presiding: Holly Riddle, JD

Room: Fields (Suite Tower-3rd Floor)

8:00 am – 8:45 am

## AWARDS BREAKFAST

Open to all conference attendees  
at no additional cost.

AAIDD is pleased to recognize its members  
and others for their service.

Join us in honoring their accomplishments  
at this year's Awards Breakfast.

Presiding: Thomas Fish, PhD, FAAIDD,  
Awards and Fellowship Committee Chair

Room: Grand Ballroom A (Tower Suite-2nd Floor)



8:45 am – 9:15 am

Join us for some exclusive exhibit  
time and enjoy a coffee break as  
you interact with our exhibitors  
and sponsors in the Exhibit Hall.

### PLENARY SESSION

9:15 am – 10:45 am

#### Where Do We Go with Research, Practice, & Policy

Moderator: Glen Fujiura, PhD



William E. Kiernan, PhD, FAAIDD  
Founding Dean, UMass Boston's School for  
Global Inclusion and Social Development



Amy S. Hewitt, PhD, FAAIDD  
Senior Research Associate Director,  
Research & Training Center on Community  
Living, University of Minnesota



David M. O'Hara, PhD  
CEO, Westchester Institute for Human  
Development



Susan R. Copeland, PhD  
Professor of Special Education,  
University of New Mexico

Room: Grand Ballroom A (Suite Tower-2nd Floor)

### CONGRATULATIONS TO THE 2015 AWARD RECIPIENTS

**Dybwad Humanitarian**..... Nancy Weiss, MSW

**Hervey B. Wilbur Historic Preservation**.....  
Minnesota Governor's Council on Developmental Disabilities

**Education** .....Eva M. Horn, PhD

**International**.....Laura E. Gómez, PhD

**Leadership**.....Steven M. Eidelman, MBA, MSW, FAAIDD

**Research**.....Michael L. Wehmeyer, PhD, FAAIDD

**Service**.....Thomas Fish, PhD, FAAIDD

**Student**.....Lieke van Heumen, MS

Wednesday, June 3 (continued)

10:45 – 11:00 am

**Break**

Exhibits and Silent Auction Close at Noon

**CONCURRENT SESSIONS D**

11:00 am – 12:00 pm

**PSYCHIATRIC SERVICES FOR PEOPLE WITH AUTISM**

**Moderator:**

Deborah M. Fisher, PsyD, Co-Chair, AAIDD Psychology Division

**Emergency Department Utilization by Persons with Autism Spectrum Disorder/Developmental Disabilities in South Carolina**

Andrea Boan, PhD, Medical University of South Carolina

Jane Charles, MD, Medical University of South Carolina

**Improving Psychiatric Inpatient Care for Individuals with ID and ASD and their Families**

Andrea Witwer, PhD, The Ohio State University

Yona Lunskey, PhD, FAAIDD, Centre de Toxicomanie et de Santé Mentale

Margaret Mehling, MA, The Ohio State University

Tara Benninger, The Ohio State University

Room: Segell (Suite Tower-3rd Floor)

**DABS**

**Moderator:**

Karyn Harvey PhD, Co-Chair, AAIDD Psychology Division

**Diagnosing Intellectual Disability Using the Diagnostic Adaptive Behavior Scale**

Marc J. Tassé, PhD, FAAIDD, The Ohio State University

Robert L. Schalock, PhD, FAAIDD, Schalock & Associates

Giulia Balboni, PhD, FAAIDD, Università di Pisa

Room: Jones (Suite Tower-3rd Floor)

**AAIDD/IASSIDD**

**Moderator:**

Marco Lombardi, PhD, Co-Chair, AAIDD International SIG

**Considering a Joint AAIDD/IASSIDD Policy Initiative**

This session is designed to solicit input and feedback on the nature of joint AAIDD/IASSIDD international policy initiatives.

Room: Nunn (Suite Tower-2nd Floor)

**HEALTH POLICY**

Moderator: Barbara Merrill, JD, ANCOR

**Health Care Costs for Americans with Intellectual and Developmental Disabilities: A National Analysis of Access and Spending 2002–2011**

Glenn Fujiura, PhD, University of Illinois at Chicago

Henan Li, MS, University of Illinois at Chicago

Sandra Magaña, PhD, University of Illinois at Chicago

Susan Parish, PhD, FAAIDD, Brandeis University

**HealthMatters, Kentucky! A Statewide Scale Up Case Study: From Policy to Sustainable Practice**

Lindsey Mullis, MS, University of Kentucky

Kathy Sheppard-Jones, PhD, University of Kentucky

Claudia J. Johnson, Kentucky Division of Developmental & Intellectual Disabilities

Sue Molokwu, Cypress Community Services

Beth Marks, University of Illinois at Chicago

Room: French (Tower Suite-3rd Floor)

**COMMUNITY LIVING POLICY**

Moderator: Matt Morgan, Co-Chair, AAIDD Community Services Division

**Now We Can! Toolkit for Self-Advocates on the Home and Community-Based Services Rule**

Yoshi Kardell, MSW, Human Services Research Institute

Yoshiko Kardell, MSW, Human Services Research Institute

Risa Rojas, Human Services Research Institute

**Preserving Innovative Shared Living Models Under the DOL Home Care Rule**

Katherine Berland, JD, American Network of Community Options and Resources

Mary Lee Fay, National Association of State Directors of Developmental Disabilities

Robert Baker, Keystone Human Services

Room: Beckham (Tower Suit-3rd Floor)

**QUALITY OF LIFE IN TRANSITION AGED YOUTH**

**Moderator:**

Charles Archer, Esq, Chair, AAIDD Sexual & Social Concerns SIG

**Transition Discoveries: Inclusion and Empowerment of Youth and Families in Participatory Action Research**

Celia Feinstein, MA, FAAIDD, Temple University

Sally Gould-Taylor, Temple University

Joan Kester, PhD, George Washington University



## Well-Being of Transition-Age Youth with Intellectual and Developmental Disabilities

Elizabeth Biggs, MA, Vanderbilt University

Erik W. Carter, PhD, FAAIDD, Vanderbilt University

Room: Breathitt (Suite Tower-2nd Floor)

12:00 – 1:00 pm

### Lunch on Your Own

Don't forget to pick up  
Silent Auction items by 1:30 pm.

12:00 noon – 1:00 pm

### Psychology Division Lunch Meeting

Fee \$25

12:00 noon – 1:00 pm

### Direct Support Professionals Division

Fee \$10

Limited number of tickets available at the registration desk

12:00 noon – 1:00 pm

### Past Presidents' Lunch (By invitation only)

12 noon – 1:00 pm

## STUDENTS AND EARLY CAREER PROFESSIONALS LUNCHEON MEETING

### Leading from the Heart in an Age of Evidence Based Practice

Speaker: William C. Gaventa, Jr, MDiv, FAAIDD

Cost \$15

Limited number of tickets available at the registration desk.

Room: Combs Chandler (Suite Tower-2nd Floor)

Co-sponsored  
by The  
MENTOR  
Network

## CONCURRENT SESSIONS E

1:00 – 2:00 pm

### PLANNING FOR THE 12TH EDITION

#### Planning for the 12th Edition of AAIDD's Terminology and Classification Manual

Robert Schalock, PhD, FAAIDD, Schalock & Associates

Ruth Luckasson, JD, FAAIDD, University of New Mexico

This session is designed to solicit input on the critical issues to be addressed by the 12th edition of the Association's terminology and classification manual, including content, context, alignment with the DSM-5 and ICD-11, and significant stakeholders.

Nunn (Tower Suite-2nd Floor)

### PARTICIPATORY ACTION RESEARCH

#### Moderator:

Yona Lunsky, PhD, FAAIDD, Chair, AAIDD Research Division

#### Project ETHICS: Comparing Stakeholder Views on Ethical Issues in Research with Adults with Intellectual Disability

Katherine McDonald, PhD, Syracuse University

Nicole Conroy, PhD, Syracuse University

Robert Olick, PhD, SUNY Upstate Medical University

Carolyn Kim, Syracuse University

#### A Citizen's Jury to Develop Policy Priorities in Autism Data Collection

Alexandra Bonardi, MHA, University of Massachusetts Medical School

Ari Ne'eman, Autistic Self Advocacy Network

Julia Bascom, Autistic Self Advocacy Network

Room: Beckham (Tower Suite-3rd Floor)

### GERONTOLOGY SYMPOSIUM

#### Moderator:

David T. Helm, PhD, FAAIDD, Boston Children's Hospital, University of Massachusetts Boston

#### Designing the Right Environment to Successfully Age in Place

Nicole Cadovius, MBA, MSM, FAAIDD, Ability Beyond

#### Promoting Successful Aging in Adults with Intellectual Disabilities and their Caregivers

Elizabeth Perkins, PhD, FAAIDD, University of South Florida

#### What do you Mean I can Retire?

Catherine Rush, MBM, Consultant

Room: French (Tower Suite-3rd Floor)

### SIS

#### Moderator:

Maria Carbo-Carreté, PhD, Co-Chair, AAIDD International SIG

#### Moving Forward with the Supports Intensity Scale

James R. Thompson, PhD, FAAIDD, Illinois State University

Carolyn Hughes, PhD, FAAIDD, Queen's College

Karrie Shogren, PhD, FAAIDD, University of Kansas

Michael Wehmeyer, PhD, FAAIDD, University of Kansas

Room: Segell (Tower Suite-3rd Floor)

Wednesday, June 3 (continued)

### HOME AND COMMUNITY BASED SERVICES

**Moderator:**

*Hilda Trahan, Co-Chair, AAIDD Administration Division*

**Regulations Regarding the Settings of Home and Community-Based Services: Where the States Stand Now, Where They Should Go Moving Forward**

*Elizabeth Edwards, JD, National Health Law Program*

*Samantha Crane, JD, Autistic Self-Advocacy Network*

*Room: Jones (Tower Suite-3rd Floor)*

### DIRECT SUPPORT PROFESSIONALS

**Moderator:**

*Lori Sedlezky, MSW, Co-Chair, AAIDD Direct Support Professionals Division*

**Direct Support Professionals: Workforce Stability and Quality Outcomes for Individuals with Intellectual and Developmental Disabilities**

*Dorothy Hiersteiner, MPP, Human Services Research Institute*

*Mary Lee Fay, National Association of State Directors of Developmental Disabilities*

*Derek Nord, PhD, University of Minnesota*

*Amy Hewitt, PhD, FAAIDD, University of Minnesota*

*Room: Breathitt (Tower Suite-2nd Floor)*

### CLOSING PLENARY SESSION

2:15-3:45 pm

#### CLOSING PLENARY

**Making a Difference Through Research, Practice, & Policy**



**Susan Palmer, PhD, FAAIDD**

*President-elect, AAIDD Board of Directors*

*Research Professor, Life Span Institute, University of Kansas*

*Room: Grand Ballroom A (Suite Tower-2nd Floor)*

6:30 pm

#### Religion and Spirituality Division Dinner

*Cost: \$55 (dessert and beverages not included)*

The Religion and Spirituality Division Annual Dinner will be at Brazieros Brazilian Steakhouse. Please meet in the Lobby at 6:00 pm.

*Purchase your ticket at the registration desk*

### COMPLIMENTARY POST CONFERENCE SESSIONS

4:00 – 6:00 pm

#### Writing for Publication

*Glenn Fujiura, PhD, University of Illinois at Chicago*

*Deborah Fidler, PhD, Colorado State University*

*Michael Wehmeyer, PhD, FAAIDD, University of Kansas*

*Karrie Shogren, PhD, University of Kansas*

*Kathleen McLane, American Association on Intellectual and Developmental Disabilities*

The session addresses what professionals in the field need to know about how to be published in a scholarly journal: the elements of a research report needed for journal publication; the types of research and other articles published by the three AAIDD journals; how to determine which journal is the best fit for your work; and the policies and processes involved in publication in scholarly journals in both print and electronic formats.

*Room: Nunn (Tower Suite-2nd Floor)*

4:00 – 6:00 pm

#### Updates and New Directions: The SIS-A

*James R. Thompson, PhD, FAAIDD, Illinois State University (Moderator)*

#### Using the Supports Intensity Scale Assessment: Kentucky's Experience

*Debra Hall, Donna Pottinger, and Cindy Christensen, Kentucky Division of Developmental and Intellectual Disabilities*

Kentucky began using the SIS assessment in 2011 with the Supports for Community Living Waiver program. It is now required in regulation for this program, and results from the SIS are used to support plan of care objectives to justify service requests. This presentation will provide an overview of the experience from the beginning of the project through present, highlighting the positive impact that the assessment has had as well as the efforts that were required for the successful launch of the assessment.

*Room: Breathitt (Tower Suite-2nd Floor)*

## AAIDD Corporate Members: Thank you for your Support!

Alexander Milne Home for Women  
 Boswell Regional Center  
 California Department  
 of Developmental Services  
 Christian Horizons  
 Community Access Unlimited, Inc.  
 Complete Pharmacy Care  
 CRDITED de Montréal  
 Developmental Disability  
 Management Services  
 District of Columbia Department  
 of Disability Services  
 Evergreen Life Services  
 Hammer, Inc.  
 Health Risk Screening Tool  
 Howard Center  
 Human Services Research  
 Institute (HSRI)  
 Inclusion  
 Indiana Professional Management  
 Group, Inc.  
 Job Discovery, Inc.  
 Kentucky Dept. of MH-MR Services  
 Lifespire  
 Nisonger Center,  
 The Ohio State University  
 Perkins School for the Blind  
 ResCare  
 South Carolina Department  
 of Disabilities & Special Needs  
 South Mississippi Regional Center  
 Special Olympics Florida  
 Tri-County Services  
 University of Alaska Center for  
 Human Development UCEDD  
 Walton Community Service

## CONGRATULATIONS TO OUR 30 YEAR MEMBERS

Thank you for continuous membership!

Dorothy S. Bell	William J. Mahoney
Denise M. Butts	Barbara Mallette
Arthur Dykstra	Cynthia A. Moran-Laux
Caroline T. Everington	Ann R. Poindexter
James A. Gillespie	Karen K. Post
Kathryn A. Haring	E. Geronimo Robinson
William A. Janes	Shirley P. Roth
Frances M. Kavanagh	Wanda A. Rusiecki
Marilyn Klemens	Patricia A. Swalm
Peter A. Kowalski	David B. Wissink
Edward W. Kutik	Peter A. Wyngaarden



[youtube.com/aaiddvideos](https://www.youtube.com/aaiddvideos)

See member profiles and  
 conference promo videos on the  
 AAIDD YouTube Channel.





## Thursday, June 4

*The AAIDD Religion & Spirituality Division is pleased to present the*

### **2014 Henri J.M. Nouwen Leadership Award**

to **Barbara J. Newman**



As an energetic teacher, insightful consultant, prolific author, dynamic speaker, and visionary ministry director, Barbara J. Newman has combined her background in special education and her deep conviction for inclusion to shape inclusive, interdependent faith communities across the United States for individuals with disabilities.

Barbara was part of a team from CLC Network (Christian Learning Center) that pioneered inclusive education at Zeeland Christian School (ZCS), the first inclusive Christian school in the US, and helped the CLC Network team replicate this model at Christian schools throughout the country for the past thirty years.

A leader and innovator, Barbara is highly respected by her colleagues in education and disability ministry. She has created or contributed to more than twenty books, training DVDs, and other resources. She received the Christian Service Award in 2012 from Bethesda Lutheran Communities and the Barbara Lipinki Award of Merit in 2007. It is clear that in her interactions with others, she demonstrates that each person, no matter what their ability or disability, is a valued, indispensable member of the Body of Christ as depicted in 1 Corinthians 12. She reflects Henri J.M. Nouwen's respect, gratitude, and compassion for all human beings and commitment to see each person recognize, contribute, and develop their gifts in God's world.

9:00 am–12:00 pm

Fee \$30

### **Religion & Spirituality Division Forum**

*Shelly Christensen, Chair, AAIDD Religion & Spirituality Division*

Please join the Religion and Spirituality Division of AAIDD for an inspiring, informational and motivational morning with two presentations by leaders in the field of faith community inclusion.

#### **Henri J. Nouwen Award Presentation**

Barbara Newman will receive the 2015 Henri J. Nouwen Award. Barbara will speak about her work as Director of Church Services at CLC Network.

#### **FORUM KEYNOTE:**

#### **What Matters Most: Supporting People to Flourish in Faith and Life**

*Erik W. Carter, PhD, FAAIDD*

We are pleased to welcome Dr. Erik Carter as the Religion and Spirituality Division Keynote speaker. Erik is an Associate Professor in the Department of Special Education at Vanderbilt University and an AAIDD Fellow. His extensive research and teaching focuses on strategies for supporting meaningful inclusion and valued roles in school, work, community, and congregational settings for young people with intellectual and developmental disabilities. Expand your understanding about the role that faith communities can play to support people with intellectual and developmental disabilities to live quality lives.

*Room: Nunn (Tower Suite-2nd Floor)*

## POST CONFERENCE SESSIONS

**Additional fee is required for these sessions**

Continuing Education: Approved for 3 NASW (Social Work) and 3 APA (Psychology) units

9:00 am – 12:00 pm

Fee \$45

### Cultural Influences in People with IDD in a Multicultural Country

*Ellis "Pat" Craig, PhD, FAAIDD, Chair, AAIDD Multicultural Concerns SIG*

*Alya Reeve, MD, MPH, University of New Mexico*

This workshop will focus on research and clinical experience regarding individuals with intellectual and developmental disabilities and their families who represent various cultural and ethnic groups within the United States. In particular there will be discussion of how cultural factors affect communication and how this influences assessment and service delivery processes.

*Room: Breathitt (Tower Suite-2nd Floor)*

9:00 am – 12:00 pm

Fee \$45

### Current State of Research, Practice, & Policy of Community Health for Individuals with IDD

*Peter J. Smith, PhD, University of Chicago*

*Michael Msall, MD, University of Illinois at Chicago*

*Kruti Archarya, MD, University of Illinois at Chicago*

*Susan Parrish, PhD, FAAIDD, Brandeis University*

This session will include a review of the current research, practice, and policy related to the health of individuals with IDD. It will include a review of the policies concerning health care of children, a review of the current processes related to transitions between pediatric and adult health care systems, and recent research about disparities in health care of individuals with IDD.

*Room: Willis (Tower Suite-2nd Floor)*



## Minnesota Life College:

Our graduates live independent, self-sufficient, full lives.

***Not just a college experience; a lifelong partner to those who learn differently.***

Teaching *Real Skills for Real Life*® since 1996, Minnesota Life College (MLC) offers employment, social, and life skills training for young adults affected by learning differences and autism spectrum disorders through:

- Three-week Summer Internship Program experiences (ages 17-26)
- A three-year Undergraduate Program
- An ongoing Community Living Program for graduates

Contact us today to find out if Minnesota Life College is the right fit for a young adult in your life.



**Minnesota Life College**

7501 Logan Ave S, Richfield, MN 55423

612.876.9431 // [admissions@mnlifecollege.org](mailto:admissions@mnlifecollege.org) // [www.minnesotalifecollege.org](http://www.minnesotalifecollege.org)

#### 2015 MLC Dates

**July 11-16**

Pre-Orientation Program (POP)  
for students attending any college  
(register by June 12)

**August 14**

New Student Orientation

**October 9-10**

MLC Open House Events

**December 1**

Early Enrollment Deadline

**Registration Schedule**

Registration will be located in the grand ballroom foyer area. Registration will open as follows:

- Monday, June 1..... 8:00 am – 5:30 pm
- Tuesday, June 2 ..... 7:00 am – 5:00 pm
- Wednesday, June 3 ..... 7:00 am – 3:00 pm
- Thursday, June 4..... 8:00 am – 12:00 pm

**Admittance to the Annual Meeting**

Registrants are required to wear their badges for all meeting, exhibits, and other events. Admittance to all sessions will be with a badge only. Door monitors will be instructed not to admit non-registrant attendees. Special events and lunches do require an additional fee.

**Pre and Post Conference Sessions**

The general registration rate includes all events scheduled for two main dates of the conference, Tuesday, June 2 and Wednesday, June 3. Any pre and post sessions require an additional fee.

**Meeting Attire**

Dress for the Annual Meeting is business casual. Consider bringing a light sweater with you since meeting room temperatures and personal comfort levels vary.

**Silent Auction**

A silent auction will be held in the Exhibit area during the regular exhibit hours. Bid on items of your choice! Bidding closes at 12:00 noon on Wednesday, June 3. All items must be picked up by 1:30 pm on June 3.

**Exhibit Hours**

- Tuesday, June 2 .....7:30 am – 4:00 pm
- Wednesday, June 3 .....7:30 am – 12:00 noon

The exhibits are an integral part of the educational program; we invite you to visit them. A listing of exhibitors and the products they are displaying are listed on pages 43 –46 of this program. Acceptance of exhibits by AAIDD does not imply an endorsement.

**Bookstore Hours**

The AAIDD Bookstore will be open during regular exhibit hours. Publications will be for sale. Stop by to examine our new books and journals. The Bookstore is located in the Ballroom Foyer.

**Internet**

Complimentary Wi-Fi is available in the meeting space. Password will be provided at the opening plenary session and will also be posted at the registration desk.





Tuesday, June 2 | 5:00 – 7:00 pm

## ASSESSMENT

### Board #11

#### The Validity and Long-term Stability of the SIS for Persons with Autism

*Gudmundur Arnkelsson, PhD, Háskóli Íslands*  
*Tryggvi Sigurdsson, PhD, The State Diagnostic and Counselling Centre (Iceland)*

### Board #12

#### Personal Outcome Scale Children and Adolescents: The Psychometric Properties

*Marco Lombardi, MS, HoGent University & Università Cattolica del Sacro Cuore Milano*  
*Luigi Croce, MD, Università Cattolica del Sacro Cuore Milano, Consorzio SIR, & ANFFAS*  
*Claudia Claes, PhD, HoGent University*  
*Stijn Vandeveld, PhD, Gent University*

### Board #13

#### Relationship between the Supports Intensity Scale-Children's Version and the ARC-INICO Assessment of Self-determination Scale

*Miguel Á. Verdugo, PhD, FAAIDD, Universidad de Salamanca*  
*Eva Vicente, PhD, Universidad de Salamanca*  
*Veronica M. Guillén, PhD, University of Salamanca*  
*Marta Badía, PhD, Universidad de Salamanca*  
*Isabel Calvo, PhD, Universidad de Salamanca*  
*Michael L. Wehmeyer, PhD, FAAIDD, University of Kansas*  
*Virginia Aguayo, MS, University of Salamanca*

### Board #14

#### Support Needs and Adaptive Behavior in Children With Intellectual Disability: A Comparison Between SIS-C and DABS Scores

*Verónica M. Guillen PhD, Universidad de Salamanca*  
*Miguel Á. Verdugo, PhD, FAAIDD, Universidad de Salamanca*  
*Eva Vicente, PhD, Universidad de Salamanca*  
*Benito Arias, PhD, Universidad de Valladolid*  
*Patricia Navas, PhD, University of Zaragoza*  
*James R. Thompson, PhD, FAAIDD, University of Illinois*  
*Marc J. Tassé, PhD, FAAIDD, University of Ohio*

### Board #15

#### Development, Implementation, and Outcomes of the Mason LIFE Program Interview Tool

*Karen Ingram, MEd, George Mason University*  
*Heidi Graff, PhD, George Mason University*

## AUTISM

### Board #34

#### Environmental Exposures and Autism Spectrum Disorder

*Christine Gadbois, DNP, Seven Hills Foundation*

### Board #35

#### Pilot Study: Social Anxiety and Autism Spectrum Disorders

*Coleen Vanderbeek, PsyD, Consultant*

### Board #36

#### Autism Spectrum Disorder and Stress in People with Intellectual and Sensory Disabilities

*Gitta de Vaan, MSc, Radboud Universiteit Nijmegen Behavioural Science Institute*  
*Mathijs Vervloed, PhD, Radboud Universiteit Nijmegen Behavioural Science Institute*  
*Kitty Bloeming, PhD, Royal Visio*  
*Carolina de Weerth, PhD, Radboud Universiteit Nijmegen*

### Board #37

#### The Vineland-II in Preschool Children With Autism Spectrum Disorders: An Item Content Category Analysis

*Giulia Balboni, PhD, FAAIDD, University of Pisa*  
*Alessandra Tasso, PhD, University of Ferrara*  
*Filippo Muratori, MD, University of Pisa & IRCCS Fondazione Stella Maris*  
*Roberto Cubelli, PhD, University of Trento*

### Board #38

#### Social Circles of Adults with High Functioning Autism Spectrum Disorders

*Haleigh Scott, MA, The Ohio State University*  
*Whitney Brooks, PhD, The Ohio State University*  
*Susan Havercamp, PhD, FAAIDD, The Ohio State University*

### Board #39

#### An Exploration of Locus of Control in Young Adults Labeled with Autism Spectrum Disorders

*Jerry G. Petroff, PhD, The College of New Jersey*  
*Nicholas Schade, The College of New Jersey*

### Board #40

#### Individual and Family Factors Predicting Psychosocial Adjustment in Siblings of Children with Autism Spectrum Disorder

*Katherine Walton, PhD, The Ohio State University*

Board #41

**Cognitive Comparisons for Intellectual Disability, Autism Spectrum Disorder, and Dual-Diagnosed ASD/ID in Young Children**

*Lauren Gardner, PhD, University of Tennessee Health Science Center*  
*Tera Bradley, PhD, University of Tennessee Health Science Center*  
*Colby Reed, PhD, University of Tennessee Health Science Center*  
*Laura Murphy, EdD, University of Tennessee Health Science Center*

Board #42

**Animals and Prosocial Behaviors in Children with Autism Spectrum Disorders**

*Lindsey Zemanek, MS, University of Minnesota*  
*Rebekah Hudock, PhD, University of Minnesota*

Board #43

**Bringing Neurodiversity to Supportive Services and Autism Interventions**

*Lydia Brown, TASH New England*

Board #44

**Influences on Family Decision Making about Early Treatments for Children Recently Diagnosed with ASD**

*Matthew Bogenschutz, PhD, Virginia Commonwealth University*  
*Parthenia Dinora, PhD, Virginia Commonwealth University*

Board #49

**Effects of Parent Consultation Group Program for Parents of Children on the Autism Spectrum**

*Myra Bundy, PhD, Eastern Kentucky University*  
*Kaitlyn Reynolds, Eastern Kentucky University*  
*Brittany McDaniel, Eastern Kentucky University*  
*Martha Meehan, MS, Eastern Kentucky University*

Board #50

**Building Healthier Places for Children with Autism**

*Shireen Kanakri, PhD, Ball State University*

Board #51

**Mealtime Behaviors, Dietary Intakes, and Growth in Children with Autism**

*Shirley Ekvall, PhD, Nutrition Consultant*  
*Patricia Fugazzi, Cincinnati Children's Hospital Medical Center*  
*Florence Stevens, MS, Cincinnati Children's Hospital Medical Center*  
*Valli Ekvall, PhD, Cincinnati Children's Hospital Medical Center*

Board #52

**Gender Differences in Friendships and Loneliness in High Functioning ASD and Typically Developing Adults**

*Whitney Brooks, PhD, University of North Carolina at Chapel Hill*  
*Haleigh Scott, MA, The Ohio State University*  
*Betsey Benson, PhD, The Ohio State University*

**CHALLENGING BEHAVIOR**

Board #93

**Serving Children with Developmental Disabilities and Behavioral Health Diagnoses: How are we Doing in Georgia?**

*Akilah Heggs, MA, Georgia State University*  
*Kelly Mautz, MPA, Georgia State University*  
*Mark Crenshaw, MST, Georgia State University*  
*Nathan Heald, MSW, All About Developmental Disabilities*

Board #94

**Utilizing Positive Behavior Supports (PBS) in IDD Settings**

*Kathleen Jordan, DHA, Seven Hills Foundation*  
*Jonathan Worcester, PsyD, Seven Hills Foundation*

Board #95

**Associations Between Adaptive Behavior and Health Problems of Adults With Down Syndrome**

*Rebecca Graves, PhD, University of Tennessee Health Science Center & University of South Alabama*  
*Carolyn Graff, PhD, FAAIDD, University of Tennessee Health Science Center*

Board #96

**When Do I Get To Be An Adult? Confronting Challenges of a Self-Determination Model For Individuals With Severe Behavior**

*Robert E. Myers, III, MPA, Kelberman Center*  
*Beth A. Myers, EdD, Syracuse University*

**COMMUNITY LIVING**

Board #1

**TakeFIVE: Outreach, Education, and Training: An Evidence Based Approach to Implementing Volunteer Respite Programs in Faith-based and Community Organizations**

*Celia Feinstein, MA, FAAIDD, Temple University*  
*Sally Gould-Taylor, Temple University*  
*Mary Jones-Furlow, MSW, Temple University*

Board #2

**Impact of Environmental Modifications on Successful Transition into Community Living**

*Christina Espinosa, MA, University of Kentucky*  
*Kathy Sheppard-Jones, PhD, University of Kentucky*  
*Anna Bard, University of Kentucky*

Board #3

**Does Participation in Faith Communities Really Make a Difference? An Examination of National Core Indicator Data**

*Harold Kleinert, EdD, University of Kentucky*  
*Milt Tyree, University of Kentucky*  
*Erik Carter, PhD, FAAIDD, Vanderbilt University*  
*Laura S. Butler, MRC, University of Kentucky*

## DIRECT SUPPORT PROFESSIONALS

### Board #10

#### **Core Competencies for the Direct Service Workforce: A Validated, Cross Sector Resource for Training and Workforce Development to Improve Home and Community Based Services**

*Lori Sedlezky, MSW, University of Minnesota*

### Board #16

#### **The National Validation of the CMS Core Competencies for Direct Service Workers: Building a Foundation for Cross Sector Career Pathways**

*Lori Sedlezky, MSW, University of Minnesota*

### Board #25

#### **One Agency's Journey to Understand Turnover and Efforts Engage and Retain Direct Care Staff**

*Becky Stauffer, MPA, Penn-Mar Human Services*

### Board #32

#### **Making a Difference in the Quality of Community Support Practices: NADSP and the Role of Staff Knowledge, Skill, and Ethics**

*Carol Laws, PhD, University of Georgia & NADSP*

## EDUCATION

### Board #85

#### **Teaching 21st Century Learning Skills to Students with Disabilities in Inclusive Settings: An Investigation into the Relationship Between Problem-based Learning and Self-determination**

*Soonhwa Seok, PhD, Korea University*

*Boaventura DaCosta, PhD, Solers Research Group*

### Board #86

#### **Promoting Self-Determination of Youth with IDD at School: A Systematic Review of Evidence-Based Practices**

*Cristina Mumbardó, MA*

*Climent Giné Giné, PhD, FAAIDD*

*Maria Carbo-Carreté, PhD, Ramon Llull University*

### Board #87

#### **Participation of Students with Intellectual & Developmental Disabilities in Extracurricular Activities: Are They Included?**

*Colleen Thoma, PhD, FAAIDD, Virginia Commonwealth University*

*Martin Agran, PhD, University of Wyoming*

*Andrew Wojcik, MEd, Albemarle County Schools*

*Cynthia Nixon, EdD, Francis Marion University*

### Board #88

#### **Light at the End of the IEP Tunnel: Voices of Classroom Teachers**

*Barbara L. Govendo, PhD, Lesley University*

*Gail S. Cahill, EdD, Lesley University*

*Beverly Cush Evans, PhD, Lesley University*

*Linda Lengyel, PhD, Lesley University*

### Board #97

#### **Implementation of Core Vocabulary with Students with Disabilities**

*Anne McWilliams, MS, Illinois State University*

### Board #98

#### **Intensive Special Educational Need and the Development of Inclusive Practices in Finland**

*Elina Kontu, PhD, Helsingin Yliopisto*

*Raija Pirttimaa, PhD, Jyväskylän Yliopisto*

*Tiina Kokko, MA, Jyväskylän Yliopisto*

*Henri Pesonen, MA, Helsingin Yliopisto*

### Board #99

#### **Rating Proximity Between Items for an Assistive Technology Evaluation Instrument Using Multidimensional Scaling from the Perspective of the Subject Matter Expert: A Validation Study**

*Soonhwa Seok, PhD, Korea University*

*Boaventura DaCosta, PhD, Solers Research Group*

### Board #100

#### **Improving Social Marginalization from the Benefits of Information and Communication Technology: An Investigation into the Significance of Support Intensity and Social Maturity in Promoting Digital Propensity Among Youth and Young Adults with Intellectual Disability**

*Soonhwa Seok, PhD, Korea University*

*Boaventura DaCosta, PhD, Solers Research Group*

### Board #101

#### **Challenging Prevailing Practice in Inclusive Education: The Power of Peer Support and Peer Network Interventions**

*Erik Carter, PhD, FAAIDD, Vanderbilt University*

*Heartley Huber, MEd, Vanderbilt University*

*Elizabeth Biggs, MEd, Vanderbilt University*

### Board #102

#### **Using Sensory Processing Concepts to Promote Positive Behavior in Children with ID**

*Eva Dean, OTR, University of Kansas Medical Center*

### Board #103

#### **Review of a Content Analysis of Goals for High School Students with ID**

*Hyojeong Seo, PhD, University of Kansas*

*Susan Palmer, PhD, University of Kansas*

*Kendra Williams-Diehm, PhD, University of Oklahoma*



Board #104

**Understanding Teacher Dispositions for Inclusive Education**

*Jennifer Kurth, PhD, University of Kansas*

Board #113

**School Wide Positive Behavior Supports**

*Lisa Blue, MA, University of New Mexico*

Board #114

**Schoolwide Integrated Framework for Transformation (SWIFT): Systems Change in Inclusive Schools**

*Loui Lord Nelson, PhD, FAAIDD, Raise, Inc.*

Board #115

**Supporting Students with Intellectual and Developmental Disability in Postsecondary Education: The Motivations and Experiences of Peer Mentors**

*Megan Griffin, PhD, University of New Mexico*

*Maria Mello, MA, Vanderbilt University*

*Carrie Glover, MA, Vanderbilt University*

*Erik Carter, PhD, FAAIDD, Vanderbilt University*

Board #116

**Intensive and Special Education Endorsement Research Project**

*Raija Pirttimaa, PhD, Jyväskylän Yliopisto*

*Elina Kontu, PhD, Helsingin Yliopisto*

*Terhi Ojala, MA, Helsingin Yliopisto*

*Henri Pesonen, MA, Helsingin Yliopisto*

Board #117

**Effects of a Writing Strategy Intervention for Students Supported by Speech Recognition and Word Prediction**

*Sara Jozwik, MS, Illinois State University*

*George R. Peterson-Karlan, PhD, Illinois State University*

Board #118

**Educator Ratings of Importance and Intensity of Supports in the General Education Setting**

*Stephanie DeSpain, MS, Illinois State University*

*James R. Thompson, PhD, FAAIDD, Illinois State University*

Board #126

**Development and Application of Collaboration-based Instruction Model for Self-Determination of Students with Disabilities in Secondary Inclusive Education Settings**

*Suk-Hyang Lee, PhD, Ewha Womens University*

Board #127

**A Longitudinal Study of Communication Ability and Associated Factors on Preschool Children with Special Needs in Taiwan Yan-Rong Huang, MA, National Taiwan Normal University & New Taipei Municipal**

*Fu-He Junior High School*

*Yin-An Chu, MA, National Taiwan Normal University & Taipei*

*Song-Shan Vocational High School of Agriculture and Industry*

Board #128

**Teaching Students with Intellectual Disability by Using Evidence-Based Practices**

*Zainab Abbas, PhD, Washington State University*

Board #129

**The Fatal Five: The Five Most Common Causes of Death or Morbidity in the IDD Population**

*Karen Green-McGowan, Health Risk Screening, Inc.*

**EMPLOYMENT**

Board #65

**What is Working for Individuals and Families: Results From a Scoping Literature Review of Employment Literature**

*John Kramer, PhD, University of Massachusetts Boston*

Board #66

**Employment Outcomes for Adults with Intellectual Disability**

*Jennifer Jones, PhD, Oklahoma State University*

*Gallus Kami, PhD, Oklahoma State University*

*Amanda Cothorn, MS, Oklahoma State University*

*Drew Egli, Oklahoma State University*

Board #67

**Competitive, Integrated Employment: Factors Determining Successful Job Placement**

*Gerald Nebeker, PhD, RISE Services, Inc.*

*Sunny Todhunter, RISE Services, Inc.*

Board #68

**Another Way to get a Meaningful Day**

*Taylor Sohba, SEEC*

*Karen Lee, MEd, SEEC*

*Cynthia Kauffman, MA, SEEC*

Board #69

**Employability of Individuals with Severe Intellectual Disability: Rehabilitation Service Providers Feedback**

*Julie Pickens, MPA, University of Illinois at Urbana-Champaign*

Board #70

**Putting Vocational Strategies into Practice: An Inside Look at Assessing, Developing, And Implementing on the Job Support Strategies for College Students With IDD**

*Amy K. Schuler, MA, The College of New Jersey*

*Jerry G. Petroff, PhD, The College of New Jersey*

*Nicole Quintero, MAT, The College of New Jersey*

Board #71

**Determining the Job Preferences of Young Adults with Intellectual Disability: A Review of Research 1990-2014 and Implications for the Future**

*Yunji Jeong, MA, University of New Mexico*

Board #72

**Measurement Invariance Model of the ASDA-Short Form in Age of Adolescents and Young Adults with Disabilities**

*Yujin Seong, MS, University of Kansas  
Michael Wehmeyer, PhD, University of Kansas  
Karrie Shogren, PhD, University of Kansas  
Susan Palmer, PhD, University of Kansas*

Board #84

**Factors That Affect the Employability of Transition-Age Individuals With Severe Intellectual Disability: Rehabilitation Providers Perspectives**

*Julie Pickens, MPA, University of Illinois at Urbana-Champaign*

**HEALTH**

Board #48

**Advance Care Planning for People with Intellectual and Developmental Disabilities: A Systematic Review of End of Life Planning in Support Plans in the United States**

*Jacqueline McGinley, MSW, University at Buffalo*

Board #57

**Cognitive Model of Healthy Lifestyles for People with Developmental Disabilities**

*George Gotto, PhD, University of Missouri-Kansas City  
Amanda George, MA, EITAS-Developmental Disability Services of Jackson County*

Board #58

**Factors Affecting Food Supply for the Individual Who is Homeless**

*Valli Ekvall, PhD, Cincinnati Children's Hospital*

Board #59

**Perceptions on Health and Health Care of People with IDD Enrolled in Medicaid Managed Care**

*Tamar Heller, PhD, University of Illinois at Chicago  
Mandy Schmidt, MPH, University of Illinois at Chicago  
Randall Owen, PhD, University of Illinois at Chicago  
Hailee Gibbons, MS, University of Illinois at Chicago*

Board #60

**How are Families Involved in Care for People with IDD Enrolled in MMC?**

*Tamar Heller, PhD, University of Illinois at Chicago  
Randall Owen, PhD, University of Illinois at Chicago  
Caitlin Crabb, MPH, University of Illinois at Chicago*

Board #61

**Exploring Health Disparities Among People with Intellectual and Developmental Disabilities: Do Race and Ethnicity Play a Role?**

*Alexandra Bonardi, MS, MHA, Human Services Research Institute  
Valerie Bradley, MA, FAAIDD, Human Services Research Institute  
Haleigh Scott, MA, The Ohio State University  
Susan Havercamp, PhD, FAAIDD, The Ohio State University*

Board #62

**Impact of a Fall Injury Prevention Program Among People With Intellectual Disability**

*Alexandra Bonardi, MS, MHA, University of Massachusetts Medical School  
Courtney Dutra, MPA, University of Massachusetts Medical School  
Emily Lauer, MPH, University of Massachusetts Medical School*

Board #63

**Racial and Ethnic Disparities in Mammography Utilization Among Women with Intellectual Disability: An Exploratory Mixed Methods Study**

*Evelyn Arana, MS, Drexel University School of Public Health  
Michael Yudell, PhD, Drexel University*

Board #64

**Health Promotion: Educating People with Intellectual and Developmental Disabilities, Direct Support Staff, and Caregivers on Nutrition, Health and Wellness**

*Ewelina Oksien, Community Access Unlimited*

Board #73

**Acceptance Rates of In-Office Gyn Exams and Procedures in a Population of Women with Disabilities: A 10 Year Review of the Experience in Delaware**

*Arlene Smalls, MD, Christiana Care Health System*

Board #74

**Adolescent and Young Women Health Gyn Care Delivery for Patients with Disabilities in New Castle Delaware, A Cooperative Care Relationship**

*Arlene Smalls, MD, Christiana Care  
Jennifer Lecomte, DO, Christiana Care  
Krishna White, MD, AI Dupont Hospital for Children  
Robyn Miller, MD, AI Dupont Hospital for Children*

Board #75

**Primary Care, Interprofessional Education, and Individuals with Intellectual and Developmental Disabilities... Miles Traveled and Many Yet to Go**

*Cecilia Rokusek, EdD, Nova Southeastern University*

Board #76

**Medical Mistrust Among Adults with Intellectual Disability and Their Family Members**

*Nechama W. Greenwood, MA, Boston University Medical Center  
Joanne Wilkinson, MD, MSc, Boston University/Boston Medical Center*

Board #77

**Measuring Medical Mistrust by Proxy Among Family Members of Adults with Intellectual Disability: The Development and Pilot Testing of the Family Medical Mistrust Instrument (FAMMI)**

*Nechama W. Greenwood, MA, Boston University Medical Center  
Keri Sewell, MD, Boston University/Boston Medical Center  
Joanne Wilkinson, MD, MSc, Boston University/Boston Medical Center*

**INCLUSION**

**Board #45**

**Responding to Diversity in the Disability Community Dawn**

*Rudolph, MSED, Association of University Centers on Disabilities*  
*Maria Isabel Frangenberg, Association of University Centers on Disabilities*  
*Naomi Rombaoa Tanaka, MS, University of Hawaii*  
*Jenean Castillo, PhD, Westchester Institute for Human Development*

**Board #46**

**Beyond Medicaid: Accessing the Community to Better Serve Individuals with IDD**

*Faythe Aiken, Human Services Research Institute*  
*John Agosta, PhD, Human Services Research Institute*

**Board #47**

**Inclusive Leadership in Action: Diversity Includes Disability**

*Kathleen Miller, MSW, Temple University*  
*Guy Caruso, PhD, FAAIDD, Temple University*

**MENTAL HEALTH**

**Board #78**

**Substance Abuse among Youth with Disabilities in Ohio**

*Courtney Frantz, The Ohio State University*  
*Tim Sahr, MPH, MA, MDiv, ThM, Ohio Colleges of Medicine*  
*Quynh Wells, PhD, The Ohio State University*  
*Emily Yang, The Ohio State University*

**Board #79**

**Suicide and Disability in Ohio**

*Emily Yang, The Ohio State University*  
*Tim Sahr, MPH, MA, MDiv, ThM, Ohio Colleges of Medicine*  
*Government Resource Center*  
*Quynh Wells, PhD, The Ohio State University*  
*Courtney Frantz, The Ohio State University*

**Board #80**

**Youth and Disability: Results from the Ohio Youth Risk Behavior Survey 2013**

*Quynh Wells, PhD, The Ohio State University*  
*Tim Sahr, MPH, MA, MDiv, ThM, Ohio Colleges of Medicine*  
*Government Resource Center*  
*Courtney Frantz, The Ohio State University*  
*Emily Yang, The Ohio State University*

**Board #89**

**Individuals with Developmental Disabilities Involved in the Criminal Justice System: A Seven Year Study of Research and Practice**

*Janet Keeler, PhD, Cuyahoga County Board DD*  
*Robert Rowe, MA, Cuyahoga County Board DD*  
*George Tsagaris, PhD, Cleveland State University*  
*Mamadou Seck, PhD, Cleveland State University*

**Board #90**

**Legal Issues, "The Dignity of Risk", Competence, and Therapeutic Interventions for Individuals with Co-Occurring Intellectual Disability and Mental Health Issues**

*Rebecca Yount, PsyD, Private Practice*  
*Adrienne Robinson, MSW, Private Practice*

**Board #91**

**The Moderating Effects of Active Participation in the Mental Health of Victimized Youth With Disabilities**

*Kristin Berg, PhD, Temple University*  
*Cheng-shi Shiu, PhD, University of Washington*  
*Kruti Acharya, MD, University of Illinois-Chicago*  
*Michael Msall, MD, University of Chicago*

**Board #92**

**Active Participation Moderates the Mental Health of Youth with Disabilities who Have Experienced Victimization**

*Kristin Berg, PhD, Temple University*  
*Cheng-shi Shiu, PhD, University of Washington*  
*Kruti Acharya, MD, University of Illinois-Chicago*  
*Michael Msall, MD, University of Chicago*

**PARENTS AND FAMILIES**

**Board #26**

**Bridging Barriers for Parents with Disabilities Through Creative Collaborations**

*Kara Ayers, PhD, University of Cincinnati*

**Board #27**

**Raising Expectations for Life After High School: Parents Share What Matters Most**

*Carly Blustein, MEd, Vanderbilt University*  
*Erik Carter, PhD, FAAIDD, Vanderbilt University*

**Board #28**

**Maternal Behavior during Mother-Child Interaction and Maternal Intelligence**

*Carolyn Graff, PhD, FAAIDD, University of Tennessee Health Science Center*  
*Laura Murphy, EdD, University of Tennessee Health Science Center*  
*Frederick Palmer, MD, University of Tennessee Health Science Center*  
*Toni Whitaker, MD, University of Tennessee Health Science Center*

**Board #29**

**Understanding the Effects of a Parent-implemented Communication Intervention: Case Studies of Two Children with Autism**

*Moon Chung, MEd, University of Illinois*  
*Melinda Snodgrass, MS, University of Illinois*  
*Hedda Meadan, PhD, University of Illinois*  
*Yusuf Akamoglu, MS, University of Illinois*



**Board #30****Health Status and Caregiving Appraisal of Family Members of People with IDD in Medicaid Managed Care**

Owen Randall, PhD, University of Illinois at Chicago  
Caitlin Crabb, MPH, University of Illinois at Chicago  
Tamar Heller, PhD, University of Illinois at Chicago

**Board #31****Satisfaction with the Caring Role: Comparing Parents of Children with Autism and Intellectual Disability**

Sayyed Ali Samadi, PhD, University of Ulster

**PERSONNEL PREPARATION****Board #119****"Street Level Bureaucracy" in Provider Organizations: Understanding Staff Engagement as a Means to Improve the Quality Of Supports and Services for People with Intellectual and Developmental Disabilities**

Caitlin Bailey, PhD, National Leadership Consortium on Developmental Disabilities  
Steven Eidelman, MSW, MBA, FAAIDD, University of Delaware  
Stephanie Shields, University of Delaware  
Amanda Rich, PhD, York College

**Board #120****Work Satisfaction, Support, and Burnout of Staff Working with Challenging Behaviors**

Carole Legare, Université de Québec à Montréal  
Diane Morin, PhD, Université du Québec à Montréal  
Melina Rivard, PhD, Université du Québec à Montréal

**Board #121****Understanding Care Staff Attitudes Towards Intellectual Disability**

Isabelle Assouline, Université du Québec à Montréal  
Diane Morin, PhD, Université du Québec à Montréal

**Board #122****Supplemental Security Income (SSI) and Street-level Bureaucracy: Understanding the SSI Application Process for Individuals with Intellectual and Developmental Disabilities through the Experiences of Family Members and Service Coordinators**

John Keesler, MSW, University at Buffalo

**Board #123****Empowering Paraprofessionals to Promote Social Interactions of Students who use AAC Inclusive Settings**

Karen Douglas, PhD, Illinois State University  
Yun-Ching Chung, PhD, Illinois State University

**Board #124****Collaboration, Social Networks, and Education: The AAIDD Student and Early Career Professional Special Interest Group**

Kimberly Wolowiec-Fisher, PhD, Arizona State University  
Sarah Hall, PhD, Ashland University

**Board #125****Identifying the Intersection of Training and Coaching Models, Evidence-based Interventions, Implementation Science Practices**

Yusuf Akamoglu, MS, University of Illinois  
Moon Chung, MEd, University of Illinois  
Jamie Pearson, MA, University of Illinois  
Melinda Snodgrass, MS, University of Illinois

**POLICY****Board #21****Going Beyond Dissemination: Partnering with Stakeholders in Data Sense Making to Inform Practice and Policy**

Alice Rhodes, MA, University of Kentucky  
Chithra Adams, MPA, University of Kentucky  
Cailin Collins University of Kentucky  
Harold Kleinert, EdD, University of Kentucky

**Board #22****Developing Prospective Budgets with Assessments to Improve Person Centered Planning**

Erica Hendricks, JD, Human Services Research Institute  
Katie Howard, MPH, Human Services Research Institute  
John Agosta, PhD, Human Services Research Institute

**Board #23****Health Promotion through Policies, Practices, and Programs**

Melissa DiSipio, MSA, FAAIDD, Philadelphia Coordinated Health Care  
Rick Rader, MD, Orange Grove Habilitation Center

**Board #24****Effective Stakeholder Communication to Support Systems Change**

Risa Rojas, Human Services Research Institute  
John Agosta, PhD, Human Services Research Institute

**Board #33****Findings From the AAIDD/UMass Boston Delegation to Poland 2014: A Nation and Service Model in Transition**

Vincent Chesney, MS, FAAIDD, Marywood University

**POSTSECONDARY EDUCATION****Board #53****Mentoring Partnerships for College Students with Disabilities**

Katherine Terrell, MEd, University of Kentucky  
Kathy Sheppard-Jones, PhD, University of Kentucky  
Bev Harp, MSW, University of Kentucky

Board #54

**Does Participation in Higher Education Make a Difference in Life Outcomes for Students with Intellectual Disability?**

*Kathy Sheppard-Jones, PhD, University of Kentucky  
 Laura Smith, MRC, University of Kentucky  
 Beth Harrison, PhD, University of Kentucky  
 Barry Whaley, MS, University of Kentucky*

Board #55

**Teaching Financial Literacy Skills to Young Adults with Intellectual Disabilities and Autism in a Post-Secondary Education Program**

*Maria P. Mello, MEd, Vanderbilt University*

Board #56

**Survey of Undergraduate Attitudes towards People with Disabilities**

*Wendy Tian, University of Chicago  
 Sarah Sobotka, MD, University of Chicago  
 Peter J. Smith, MD, MA, FAAIDD, University of Chicago*

**QUALITY OF LIFE**

Board #9

**Access in Conversation Between Research & Policy: Making a Difference through the Language We Use**

*Kate Caldwell, PhD, University of Illinois at Chicago  
 Liz Weintraub, Association of University Centers on Disabilities  
 Rachel Patterson, MPA, Association of University Centers on Disabilities  
 Tia Nelis, University of Illinois at Chicago*

Board #17

**Quality of Life of Outcomes of Children with Intellectual Disability**

*Laura E. Gómez, PhD, Universidad de Oviedo  
 Victor B. Arias, PhD, Universidad de Talca  
 Lucía Morán, Universidad de Oviedo  
 María Ángeles Alcedo, PhD, Universidad de Oviedo  
 Benito Arias, PhD, Universidad de Valladolid  
 Miguel Á. Verdugo, PhD, FAAIDD, Universidad de Salamanca*

Board #18

**The Quality of Life Outcome Measure in a Group of Italian Children with Intellectual Disability**

*Luigi Croce, MD, Università Cattolica del Sacro Cuore Milano, Consorzio SIR, & ANFFAS  
 Marco Lombardi, MS, HoGent University & Università Cattolica del Sacro Cuore Milano  
 Tiziana Pozzi, MD, Consorzio SIR  
 Lilio Tangi, MA, Consorzio SIR*

Board #19

**The Crossroads and Social Bonds of Girls and Women in Their Life of Meanings Builders**

*Minna Saarinen, PhD, Helsingin Yliopisto  
 Elina Kontu, PhD, Helsingin Yliopisto  
 Minna Törmänen, PhD, University of Finland*

Board #20

**"So What If..." A Vision for When Those Involved in Research, Practice, and Policy-Makers Work Together**

*Terri Niland, MTS, Consultant*

**SELF ADVOCACY**

Board #109

**Assisting Self-Advocates in Achieving Various Levels of Advocacy**

*Adeyemi Ajijedidun, Community Access Unlimited*

Board #110

**The Perspectives of Midlife Adults with Intellectual Disability, Their Parents, and Case Managers on Quality of Life and Supports and Services to Enhance it**

*Jane Lurquin, EdD, Life Span Consultants*

Board #111

**Eliciting Perceptions of Satisfaction with Services from Adults with Intellectual or Developmental Disabilities**

*Susan Copeland, PhD, University of New Mexico  
 Rob Shauger, MA, University of New Mexico  
 Ruth Luckasson, JD, FAAIDD, University of New Mexico*

Board #112

**Self-Determination and Satisfaction with Self-Directed Services and Supports**

*Christine Gadbois, DNP, Seven Hills Foundation  
 Anthony Rodriguez, PhD, Providence College  
 Mary Madden, Rhode Island College*

**SEXUALITY**

Board #105

**Using Nominal Group Technique as an Accessible Research Method to Investigate Attitudes about Sexuality in Adults with IDD**

*Aleksa Owen, MSW, University of Illinois at Chicago  
 Katie Arnold, MS, University of Illinois at Chicago  
 Carli Friedman, MS, University of Illinois at Chicago  
 Linda Sandman, University of Illinois at Chicago*

Board #106

**Sexuality Services for People with Intellectual and Developmental Disabilities in Home and Community Based Services (HCBS) Medicaid Waivers**

*Carli Friedman, MS, University of Illinois at Chicago  
 Aleksa Owen, MSW, University of Illinois at Chicago*

Board #107

**A Cross-Cultural Study of Sexuality Education and Students with Intellectual Disability: Interview Study with Korean Special Education Educators**

*Seonsook Park, PhD, New Mexico Highlands University  
 Ruth Luckasson, JD, FAAIDD, University of New Mexico  
 Leslie Walker-Hirsch, MEd, FAAIDD, Moonstone*

## Board #108

**What do you Believe? Direct Support Professional Beliefs on Relationships and Sexuality**

*Alicia-Ann Caesar, Community Access Unlimited*  
*Aisha Arroyo, Community Access Unlimited*

**TECHNOLOGY**

## Board #4

**Risks and Benefits of Internet Use by People with Intellectual Disability**

*Claude Normand, PhD, Université du Québec en Outaouais*  
*François Sallafranque-St-Louis, Université du Québec en Outaouais*

## Board #5

**Assistive Technology for Individuals with Developmental Disabilities**

*Julie Lowe, Hattie Larlham Center for Children with Disabilities*  
*Cassandra McMinn, MA, Hattie Larlham Center for Children with Disabilities*

## Board #6

**Using Google Glass to Teach Daily Living Skills to Young Adults with Intellectual Disability**

*Kelly Kelley, PhD, Western Carolina University*  
*Chris Rivera, PhD, East Carolina University*  
*Ryan Kellems, PhD, Brigham Young University*  
*Martin Tanaka, PhD, Western Carolina University*

## Board #7

**System for Electronic Support of Independent Living of Persons with Intellectual Disability**

*Michał Kosiedowski, MSc, Poznań Supercomputing and Networking Center*  
*Lucia Cofta, MA, Stowarzyszenie Na Tak*  
*Bartosz Głuszak, MSc, Poznań Supercomputing and Networking Center*  
*Adam Madejski, MA, Stowarzyszenie Na Tak*  
*Natalia Marciniak-Madejska, Stowarzyszenie Na Tak*  
*Katarzyna Pawelczak, Adam Mickiewicz University*  
*Zbigniew Wozniak, Adam Mickiewicz University*

## Board #8

**Telemedicine for Stable Epilepsy: Policy Barriers and Opportunities**

*Amy Stevens, DNP, Seven Hills Foundation*  
*Norberto Alvarez, MD, Children's Hospital Boston*

**TRANSITION**

## Board #81

**What are the Needs of People with Profound Intellectual Disability and their Families During Post-school Transition?**

*Camille Gauthier-Boudreault, MA, Université de Sherbrooke*  
*Frances Gallagher, PhD, Université de Sherbrooke*  
*Melanie Couture, PhD, Université de Sherbrooke*

## Board #82

**Transition Age Youth Achieving Independence**

*Gerianne Prom, Milwaukee Center for Independence*  
*Danielle Skenadore, Milwaukee Center for Independence*

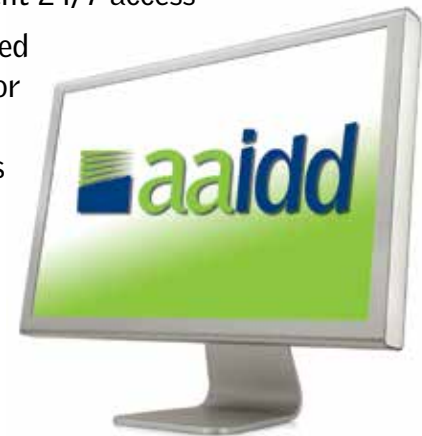
## Board #83

**Generating "Collective Impact" for Successful Transitions: Lessons Learned**

*Richard Parent-Johnson, PhD, University of South Dakota*

## GET STARTED WITH E-LEARNING from AAIDD!

- More than 300 CE-approved courses
- Organizational and individual access to courses
- Convenient 24/7 access
- Discounted pricing for AAIDD members

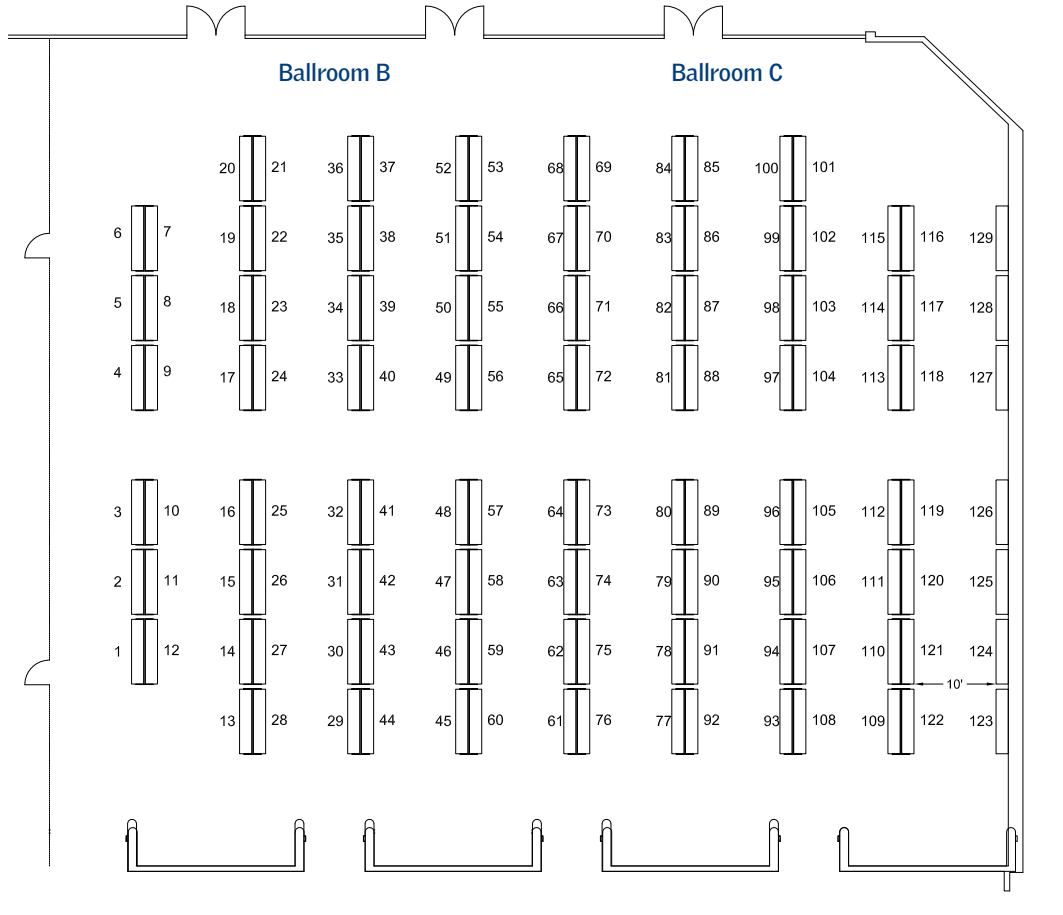


**GET CONNECTED TODAY!**  
[aaidd.reliasacademy.com](http://aaidd.reliasacademy.com)

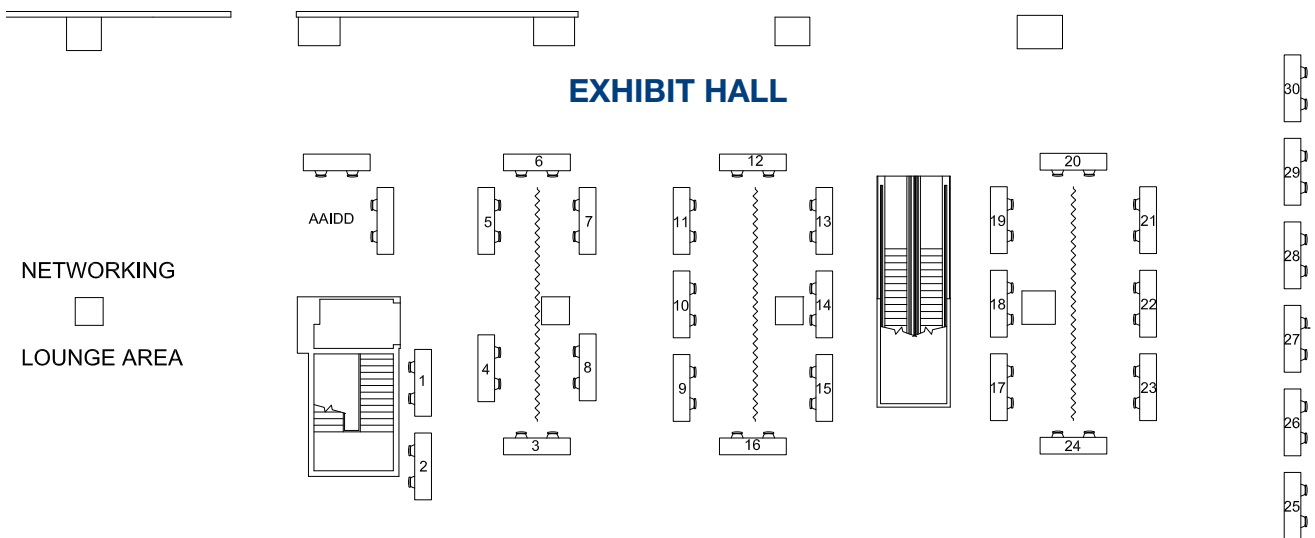


## GALT HOUSE HOTEL Suite Tower, Second Level

### POSTERS



### EXHIBIT HALL



We invite you to visit our exhibitors and contact those companies whose products or services interest you. The exhibits are located in Events/Exhibit Hall.

*To participate in the exhibit hall game, please visit the exhibitors with a ★!*

### ANCOR | Sponsor ★

#### TABLE #16

1101 King St, Suite 380, Alexandria, VA 22314  
 Contact: Jerri McCandless  
 Phone: 703-535-7850  
 Email: jmccandless@ancor.org  
 Website: www.ancor.org

*The American Network of Community Options and Resources (ANCOR) is a national trade association representing more than 800 private providers of community living and employment supports and services to more than 400,000 individuals with disabilities. As a nonprofit organization, ANCOR successfully addresses the needs and interests of private providers before Congress and federal agencies, continually advocating for the crucial role private providers play in enhancing and supporting the lives of people with disabilities and their families.*

### AUCD

#### TABLE #21

1100 Wayne Ave, Suite 1000, Silver Spring, MD 20910  
 Contact: Laura Martin  
 Phone: 240-821-9379  
 Email: lmartin@aucd.org  
 Website: www.aucd.org

*The Association of University Centers on Disabilities (AUCD) advances policy and practice for and with people with disabilities and their families. Materials will be available from Allies in Self Advocacy, including reports from national self-advocacy summits, grant writing tool kit for self-advocacy, organizations, and a toolkit for funders of self-advocacy organization.*

### AYM TECHNOLOGIES, LLC

#### TABLE #4

2020 S. Tryon St, Suite B, Charlotte, NC 28203  
 Contact: Douglas Finley  
 Phone: 704-343-9688  
 Email: lmartin@aucd.org  
 Website: www.aymtech.net

*Aym Technologies is the recognized leader in human service organizational management solutions. Our fully integrated technology solution coupled with our unique service model enables leading health and human service agencies to improve the performance of their organization. We've developed a suite of technology and service solutions, named OnTarget®, that leverages industry best practice standards to help our customers realize substantial gains in both quality and efficiency.*

### BETHESDA INSTITUTE

#### TABLE #9

600 Hoffman Dr, Watertown, WI 53094  
 Contact: Diane Hackbarth  
 Phone: 877-878-6650  
 Email: diane.hackbarth@mailblc.org  
 Web: www.shopbethesda.org

*The Bethesda Institute has supported people with intellectual and developmental disabilities since 1904. Bethesda earned Network Accreditation in Person Centered Excellence from the Council on Quality and Leadership in 2013. Quality staff training and faith resources are available through the Bethesda Institute.*

### BROOKES PUBLISHING

#### TABLE #10

PO Box 10624, Baltimore, MD 21285  
 Contact: Melanie Allred  
 Phone: 410-337-9580  
 Email: mallred@brookespublishing.com  
 Web: www.brookespublishing.com

*At Brookes, we share your commitment to helping all people meet their potential. A trusted independent company for 35+ years, we partner with top disability experts to bring you the best, most practical resources on inclusion, transition, communication, employment, and more. We stand with you to support better lives and opportunities for people with disabilities.*

### CAPGROW PARTNERS

#### TABLE #8

320 W. Ohio, Suite 650N, Chicago, IL 60654  
 Contact: Alexis Budge  
 Phone: 773-329-4646  
 Email: adbudge@capgrowpartners.com  
 Web: www.capgrowpartners.com

*Since 2005 CapGrow Partners has been in the business of providing safe, secure, and appropriate housing options for individuals with behavioral and developmental disabilities. Our extensive resume of experience and strategic portfolio of resources has allowed many of the nation's leading for- and not-for-profit human service organizations to rely on us to fulfill their housing needs.*

### CARF INTERNATIONAL | Sponsor ★

#### TABLE #19

6951 East Southpoint Road, Tucson, AZ 85756  
 Contact: Pete Hathaway  
 Phone: 888-281-6531 ext 7113  
 E-mail: phathaway@carf.org  
 Website: www.CARF.org

*CARF International is an independent, nonprofit organization focused on advancing the quality of services. Through accreditation CARF assists service providers in improving the quality of their services, demonstrating value, and meeting internationally recognized organizational and program standards.*

## COMMONWEALTH COUNCIL ON DEVELOPMENTAL DISABILITIES | Sponsor ★

### TABLE #24

32 Fountain Place, Frankfort, KY 40601  
 Contact: Shelley Runkle  
 Phone: 522-782-8604  
 Email: shelly.runkle@ky.gov  
 Web: www.kycdd.gov

The Commonwealth Council on Developmental Disabilities (CCDD) mission is to create systemic change in KY that empowers individuals to achieve full citizenship and inclusion in the community through education, capacity building, and advocacy.

## DDNA

### TABLE #27

1501 South Loop 288, Suite 104-381, Denton, TX 76205  
 Contact: Kathy Brown  
 Phone: 800-888-6733  
 Email: kathybrown@palrx.com  
 Web: www.ddna.org

*Developmental Disabilities Nurses Association (DDNA)* is the premiere association for nurses who provide care and support to persons with intellectual and developmental disabilities; our mission is to continually develop our expertise to assure the highest quality of life for the people we support throughout their lifespan.

## GENOA, A QOL HEALTHCARE COMPANY

### TABLE #5

3140 Neil Armstrong Blvd, Suite 300, Eagan, MN 55121  
 Contact: Alyssa Fettinger  
 Phone: 484-467-6320  
 Email: afettinger@genoa-qol.com  
 Web: www.genoa-qol.com

*Genoa, a QoL Healthcare Company* is the nation's market-leading provider of pharmacy services dedicated to the behavioral health community and those affiliated with managing the cost and quality of their care. For more information about our on-site pharmacy models, please visit our website.

## HEALTH RISK SCREENING, INC. | Sponsor

### TABLE #13

25400 US Highway 19 N #197, Clearwater, FL 33763  
 Contact: Gina Kugler  
 Phone: 727-437-3201  
 Email: gina@hrstonline.com  
 Web: www.hrstonline.com

The *Health Risk Screening Tool (HRST)* is a standardized, web-based instrument that detects health risks associated with intellectual and developmental disabilities, and then prompt for special attention and prevention. The HRST helps meet CMS health and safety requirements, assists with equitable resource allocation, allows less restrictive settings for individuals, assists in plan development, and transitioning to community settings.

## HUMAN SERVICES RESEARCH INSTITUTE

### TABLE #11

7690 SW Mohawk St, Bldg K, Tualatin, OR 97062  
 Contact: Faythe Aiken  
 Phone: 503-924-3783 ext 24  
 Email: faiken@hsri.org  
 Web: www.hsri.org

The *Human Services Research Institute (HSRI)* will present materials and information on the National Core Indicators projects for both intellectual and developmental disabilities and Aging. Data briefs and user-friendly reports, using NCI data, will be available. The RIOT will be showcased as well as other HSRI projects related to intellectual and developmental disabilities.

## INDIANA INSTITUTE ON DISABILITY AND COMMUNITY AT INDIANA UNIVERSITY | Sponsor

### TABLE #12

1905 N Range Rd, Bloomington, IN 47408  
 Contact: Joel Fosha  
 Phone: 812-855-6508  
 Web: www.iidc.indiana.edu

The *Indiana Institute on Disability and Community* at Indiana University is committed to providing Hoosiers with disability-related information that touch the life span. Through its collaborative efforts with institutions of higher education, state and local government agencies, community service providers, those with disabilities and their families, and advocacy groups. Institute staff work to increase community capacity in disability through research, education, and service.

## LEE SPECIALTY CLINIC

### TABLE #15

4501 Louise Underwood Way, Louisville, KY 40216  
 Contact: Karen King  
 Phone: 502-368-2348  
 Email: karenking@admed.us  
 Web: www.leespecialtyclinic.com

The *LeeSpecialty Clinic* provides compassionate, interdisciplinary healthcare for people with intellectual and developmental disabilities, as well as collaborative education and research programs unlike any teaching programs in the country. Please visit our website at [www.leespecialtyclinic.com](http://www.leespecialtyclinic.com).

## THE MENTOR NETWORK | Sponsor

### TABLE #25

313 Congress Street, 5th Floor, Boston, MA 02210  
 Contact: Jennifer Lemmerman  
 Phone: 617-790-4830  
 E-mail: jennifer.lemmerman@thementornetwork.com  
 Web: <http://thementornetwork.com/>

With more than 30 years of experience providing home and community-based services, the partners of the *MENTOR Network* support people in 33 states to achieve their personal aspirations through supported employment, consumer directed plans and residential options in a variety of settings, including Host Homes/Share Living, in-home services, and small group homes.



## MENUPLUS DIETARY MANUAL

### TABLE #14

2983 Littledale Road, Akron, OH 44319  
 Contact: David Groetzinger  
 Phone: 330-633-0865  
 Email: davidgroetzinger@gmail.com  
 Web: www.residentialcaremanuals.com

*Menuplus Dietary Manual* was created by a former administrator over 30 years of experience working alongside facilities throughout the United States. This manual contains practical solutions to the challenges all facilities face. Our color coded menus meet all state and federal guidelines.

## NADD

### TABLE #29

132 Fair Street Kingston, NY 12401  
 Contact: Robert Fletcher  
 Phone: 845-331-4336  
 Email: rfletcher@thenadd.org  
 Web: www.thenadd.org

*NADD* is recognized as the world's leading organization in providing educational services, training materials and conferences. *NADD* has been influential in the development of appropriate community based policies, programs and opportunities in addressing the mental health needs of persons with intellectual and developmental disabilities.

## NATIONAL LEADERSHIP CONSORTIUM ON DEVELOPMENTAL DISABILITIES

### TABLE #17

111 Alison Hall, Newark, DE 19716  
 Contact: Kristen Loomis  
 Phone: 484-744-6480  
 Email: kloomis@udel.edu  
 Web: www.nlcdd.org

The *National Leadership Consortium on Developmental Disabilities* offers participants an opportunity to convene with a renowned faculty of national experts to focus on progressive supports and critical trends. The program develops leadership organizations that provide, advocate for our fund supports for people with intellectual and developmental disabilities and their families.

## OHIO UNIVERSITY PRESS

### TABLE #23

215 Columbus Rd, Suite 215, Athens, OH 45701  
 Contact: Samara Rafert  
 Phone: 515-418-0213  
 Email: rafert@ohio.edu  
 Web: www.ohioswallow.com

*Ohio University Press* is proud to present *Upcycling Sheltered Workshops* an indispensable manual for practitioners who want to adopt the Creative Abundance Model, a revolutionary approach to transforming workshops into integrated community spaces.

## PHARMACY ALTERNATIVES

### TABLE #28

901 Forest Ave., Oak Park, IL 60302  
 Contact: Kathy Brownl  
 Phone: 847-712-6578  
 Email: kathybrown@palrx.com  
 Web: www.palrx.com

*Pharmacy Alternatives* is a comprehensive pharmacy dedicated to helping all people we serve nationally achieve their higher level of independence. We serve individuals living in ILFs/MRs, group homes, skilled pediatric facilities, and foster care.

## QBS, INC.

### TABLE #18

257 Turnpike Rd, Suite 320, Southborough, MA 01772  
 Contact: Anne Gately  
 Phone: 508-281-0246  
 Email: agately@qbscompanies.com  
 Web: www.qbscompanies.com

*QBS, Inc.* provides quality behavior solutions to complex behavior problems. Using evidence-based procedures supported by scientific research in the field of applied behavior analysis. *QBS* offers the state of the art in behavioral safety.

## RELIAS LEARNING | Sponsor ★

### TABLE #3

111 Corning Rd, Suite 250, Cary, NC 27518  
 Contact: David Thornton  
 Phone: 919-650-6628  
 Email: dthornton@reliaslearning.com  
 Web: www.reliaslearning.com

With *Relias Learning*, relevant up-to-date courses improve compliance while minimizing travel, overtime, and hours spent away from work. By offering content in a user-friendly learning management system, *Relias* removes barriers to learning, making it easy to save money, boost productivity, and increase workplace safety.

## RESCARE | Sponsor ★

### TABLE #6

9901 Linn Station Rd, Louisville, KY 40223  
 Contact: Larry Weishaar  
 Phone: 502-394-2135  
 Email: lweishaar@rescare.com  
 Web: www.rescare.com

We are the nation's largest private provider of services to people with disabilities; the largest one-stop workforce contractor and the largest privately-owned home care company. *ResCare* offers residential and support services, education, vocational training and job placement for people of all ages and skill levels. Our purpose is to assist people to reach their highest level of independence.

## RESEARCH AND TRAINING CENTER ON COMMUNITY LIVING | Sponsor ★

### TABLE #20

UMN, 150 Pillsbury Dr, SE, 109 Pattee Hall, Minneapolis, MN 55455  
 Contact: Paul Thorson  
 Phone: 612-624-6328  
 E-mail: rtc@umn.edu  
 Web: www.rtc.umn.edu

For over 20 years the *Research and Training Center on Community Living*, University of Minnesota, has engaged in the development and dissemination of knowledge to promote community living, employment and self-determination of persons with intellectual and developmental disabilities.

## SCIOTO

### TABLE #26

5940 Wilcox Pl, Suite A, Dublin, OH 43016  
 Contact: Kate McNulty  
 Phone: 614-889-5191  
 Email: kmcnulty@scioto.com  
 Web: www.scioto.com

Scioto is the number one national provider of housing solutions for people with disabilities. Our primary focus is helping providers deliver services to the people they support. Scioto specializes in property acquisition, financing, design & build, property management, and real estate project development.

## SEVEN COUNTIES SERVICES, INC. | Sponsor

### TABLE #7

317 Taylorsville Road, Louisville, KY 40220  
 Contact: Jean Russell  
 Phone: 502-459-5292  
 Email: jrussell@sevencounties.org  
 Web: www.sevencounties.org

*Seven Counties Services, Inc.* provides comprehensive services and supports for individuals with IDD. Services include, but are not limited to: case management, supported employment, behavioral supports and adults day training.

## SIMPLYTHICK

### TABLE #22

179 Lannonade Dr, Loveland, OH 45140  
 Contact: Kevin Kinnach  
 Phone: 513-373-5580  
 Email: kevin.kinnach@simplythick.com  
 Web: www.simplythick.com

Based in St. Louis, MO, *SimplyThick LLC* is dedicated to the development of innovative technologies serving people with swallowing problems. *SimplyThick®*, the company's patented thickening agent, was introduced in October 2001.

## THERAP SERVICES | Sponsor ★

### TABLE #30

562 Watertown Ave, Waterbury, CT 06708  
 Contact: Peter O'Meara  
 Phone: 860-558-5559  
 Email: peter.omeara@therapservices.net  
 Web: www.therapservices.net

*Therap Services* is the national leader in providing a full array of electronic documentation services and systems that are web-based and person centered. We can manage documentation workflow for states counties and providers agencies that support over 20,000 individuals. From eligibility and case management information to billing and quality assurance.

## SILENT AUCTION ★

### TABLES #1 & 2

A silent auction will be held during the exhibit time. Come and bid on items of your choice!

Bidding closes at noon on Wednesday and all the process from the auction will benefit the Self-Advocacy Connection of Metro Louisville.

## FAAIDD

To be nominated for Fellow status, an individual must have had at least seven years of continuous, active membership in the Association at the time of their nomination, have participated in the professional and business affairs of the Association, and have made a meritorious contribution to the field of intellectual disability. Preferment to Fellow status is an application or "self-nomination" process. Three letters of reference from AAIDD members are required, one of which must be from a Fellow.



Nominations are accepted in the fall each year, visit [aaid.org](http://aaid.org) for more information.

## Monday, June 1

9:00 – 10:00 am

### Annual Open Membership Meeting and Leadership Forum

Presiding: Amy Hewitt, PhD, FAAIDD, President, AAIDD Board of Directors

Room: Combs Chandler (Suite Tower-2nd Floor)

10:15 – 11:30 am

### The Assembly of Geographic Interests

Presiding: Bill Gaventa, Jr., MDiv, FAAIDD, Vice President, AAIDD Board of Directors

Room: Breathitt (Suite Tower-2nd Floor)

10:15 – 11:30 am

### The Conference of Professional Interests

Presiding: Susan Palmer, PhD, FAAIDD, President-Elect, AAIDD Board of Directors

Room: Nunn (Suite Tower-2nd Floor)

## Tuesday, June 2

7:30 – 8:30 am

### Family Special Interest Group

Presiding: Thomas Fish, PhD, FAAIDD

Room: Bradley (Suite Tower-3rd Floor)

7:30 – 8:30 am

### Health and Wellness Action Group (HWAG)

Presiding: Melissa A. DiSipio, MSA, FAAIDD

Room: Willis (Suite Tower-2nd Floor)

7:30 – 8:30 am

### International Special Interest Group

Presiding: Marco Lombardi MS, and Maria Carbo-Carreté, PhD

Room: Clements (Suite Tower-2nd Floor)

7:30 – 8:30 am

### Gerontology Division

Presiding: Nicole Cadovius, MBA, MSM, FAAIDD

Room: Brown (Suite Tower-2nd Floor)

7:30 – 8:30 am

### Student and Early Career Professionals SIG

Presiding: Sara Hall, PhD, and Kim Wolowiec-Fisher, PhD

Room: Wilson (Suite Tower-3rd Floor)

12:15 – 1:45 pm

The following leadership groups will meet over lunch and a ticket is required:

### Community Services Division: "Sharing Ideas on Including in their Communities for Meaningful Days"

Presiding: Joanna Pierson, PhD, FAAIDD, and Matt Morgan

### Education Division

Presiding: Amy Rosenstein PhD, and Mary Pearson, PhD

### Mental Health Services SIG

Presiding: Vincent Chesney, MS, FAAIDD

### Religion and Spirituality Division

Presiding: Shelly Christensen, MA

Lunch Fee: \$20 (Limited number of tickets are available at the registration desk)

Room: Carroll Ford (Suite Tower-2nd Floor)

## Wednesday, June 3

7:00 – 8:00 am

### Humanist Action Group: "Discussion of the Ham-Nye Debate"

Presiding: James R. Mullin, MEd, FAAIDD

Room: Brown (Suite Tower-2nd Floor)

7:00 – 8:00 am

### Region IV Meeting

Presiding: Cordelia Robinson Rosenberg, PhD, RN, FAAIDD

Room: Willis (Suite Tower-2nd Floor)

7:00 – 8:00 am

### Multicultural SIG

Presiding: Ellis "Pat" Craig, PhD

Room: Clements (Suite Tower-2nd Floor)





**Wednesday, June 3** *(continued)**7:00 – 8:00 am***Communication Disorders Division***Presiding: Melinda Snodgrass, MEd**Room: Stanley (Suite Tower–3rd Floor)**7:00 – 8:00 am***Legal Process and Advocacy Division***Presiding: Holly Riddle, JD**Room: Fields (Suite Tower–3rd Floor)**12:00 pm – 1:00 pm***Student and Early Career Professionals  
Lunch Meeting***Lunch Fee \$15**Room: Combs Chandler (Suite Tower–2nd Floor)**12:00 pm – 1:00 pm***Psychology Division Lunch Meeting***Presiding: Rozemarijin Staal, PsyM**Lunch Fee \$25**Room: Clements (Suite Tower–2nd floor)**12:00 pm – 1:00 pm***Direct Support Professionals Division***Presiding: Lori Sedlezky, MSW**Lunch Fee \$10 Room: Brown (Suite Tower–2nd Floor)**6:30 pm***Religion and Spirituality Division Dinner***Cost: \$55.00 (dessert and beverages not included)*

Brazieros Brazilian Steakhouse

450 South 4th Street, Louisville, KY

# Become a member in AAIDD..

**AAIDD Members**

- Are the leaders in practice, policy, and research in the field of intellectual and developmental disabilities
- Influence policies and practices that affect the lives of people with disabilities and their families.

**AAIDD Education**

- A large library of online learning courses for continuing education
- Frequent webinars on timely topics
- National conferences
- International experiential learning programs

**AAIDD Research Tools and Timely Information**

- A catalog of important books and curricula
- Three leading journals
- Reliable assessment tools
- Electronic newsletters

Become a  
member today!  
[www.aaid.org](http://www.aaid.org)



American Association  
on Intellectual and  
Developmental Disabilities

# SAVE THE DATE



140th AAIDD Annual Meeting  
June 6–9, 2016 | Atlanta, Georgia



American Association  
on Intellectual and  
Developmental Disabilities



Knowledge | Support | Empowerment

**BOARD OF DIRECTORS**

Amy S. Hewitt, PhD, FAAIDD  
*President*

Susan B. Palmer, PhD, FAAIDD  
*President-Elect*

William C. Gaventa, Jr, MDiv, FAAIDD  
*Vice President*

Patti N. Martin, Med, FAAIDD  
*Secretary/Treasurer*

James R. Thompson, PhD, FAAIDD  
*Immediate Past President*

**MEMBERS-AT-LARGE**

Loui Lord Nelson, PhD, FAAIDD  
Susan Parish, PhD, MSW, FAAIDD  
Elizabeth Perkins, PhD, RNMH, FAAIDD

David Helm, PhD, FAAIDD

Margaret A. Nygren, EdD  
*Executive Director & CEO*

**EDITORS**

Deborah Fidler, PhD

Glenn T. Fujiura, PhD

Karrie A. Shogren, PhD, FAAIDD

Michael L. Wehmeyer, PhD, FAAIDD

**AAIDD PERSONNEL**

Paul D. Aitken, CPA

Maria A. Alfaro

Corine Carperter

Vaileth Hakiza

Saihanjula He, MA

Natalie Holtz

Ravita Maharaj, PhD

Kathleen McLane

Ajith Mathew

Danielle Webber, MSW

Michael Winfield, MA

**PROFESSIONAL GROUPS LEADERSHIP**

**Administration Division**

Sharon Gomez & Hilda Trahan

**Communication Disorders Division**

Melinda Snodgrass & Yvette Evans

**Community Services Division**

Joanna Pierson & Matt Morgan

**Creative Arts Therapies SIG**

Howard J. Miller

**Direct Support Professionals Division**

Lori Sedlezky & Colleen McLaughlin

**Education Division**

Amy Rosenstein & Mary Pearson

**Families**

Thomas Fish

**Genetics**

Vacant

**Gerontology Division**

Nancy Jokinen

**Health & Wellness Action Network**

Melissa DiSipio & Larry Gray

**Humanism Action Network**

James R. Mullin

**International SIG**

Marco Lombardi & Maria Carbo-Carreté

**Legal Process & Advocacy Division**

Holly Riddle

**Mental Health Services SIG**

Vincent Chesney, Patrick Maynard

**Multicultural Concerns SIG**

Ellis (Pat) Craig

**Psychology Division**

Rozemarijn Staal

**Religion & Spirituality Division**

Shelly Christensen

**Research Division**

Yona Lunsky

**Sexual & Social Concerns SIG**

Charles Archer

**Social Work Division**

Lynne Tomasa

**Student & Early Career Professionals SIG**

Sarah Hall & Kimberly Wolowiec-Fisher

**Technology SIG**

Daniel K. Davies & Yves LaChapelle

**CHAPTER AND REGIONAL LEADERSHIP**

**REGION II**

California: Bonnie R. Kraemer

Nevada: Joan Cooper

Region Chair: Krysti DeZonia

**REGION IV**

Alberta, Canada: Sandra Mak

Colorado: David A. Ervin

New Mexico: Javier Aceves

Utah: Lorie Domina

Wyoming: Lee Allen

Region Chair: Cordelia C. Robinson

**REGION V**

Arkansas: Dwight L. Sowell

Kansas: Susan B. Palmer

Louisiana: Hilda L. Trahan

Missouri: Kyle Eversman

Oklahoma: John F. Gajda

Texas: Margo Childs

Region Chair: Ellis M. Craig

Assembly Representative: Virgil L. Hobbs

**REGION VI**

Illinois: Donna C. Ennis

Michigan: Jillian Trumbull

Ohio: James D. Dunne

Wisconsin: Justin Kuehl

Region Chair: Linda A. Draayers

Assembly Representative: James D. Dunne

**REGION VII**

Alabama: DeAnna Ferguson

Florida: Emma C. Guilarte

Georgia: Mickie B. Muroff

Mississippi: Jessey R. Higdon

North Carolina: Lynn A. Ahlgrim-Delzell

South Carolina: Sloan Todd

Region Chair: Eric A. Evans

**REGION VIII**

Iowa: Susan E. Koch-Seehase

North Dakota: Paul D. Kolstoe, PhD

South Dakota: Carl K. Edwards

Nebraska: Benjamin Patch, Jr

**REGION IX**

Bermuda: Ellen E. Douglas

Maryland: Jennifer L. Wagner

New Jersey: Sidney W. Blanchard

Pennsylvania: Michael L. Powanda

West Virginia: Gabriel A. Nardi

Region Chair: Sidney Blanchard

Assembly Representative: Todd S. Wilson

**REGION X**

Connecticut: Elisa F. Velardo

Maine: Richard L. Dorian

Massachusetts: Cheryl Sartori

New York: Lester G. Parker, Jr.

Quebec, Nova Scotia & Prince Edward

Island: Yves Lachapelle

Rhode Island: Kathleen A. Ellis

Region Chair: A. Michael Bloom

Assembly Representative: Donald N. Miller





## PAST PRESIDENTS

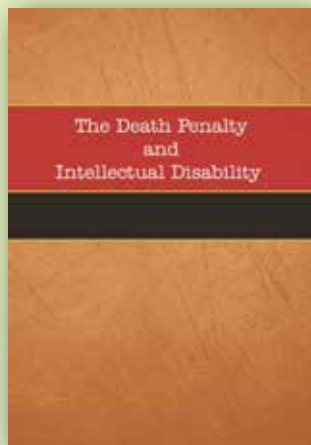
The history of the AAIDD is long and distinguished.

Our tradition, professional standing, and leadership in the area of intellectual and developmental disabilities are exemplified in the persons of our Presidents.

### Our former Presidents are:

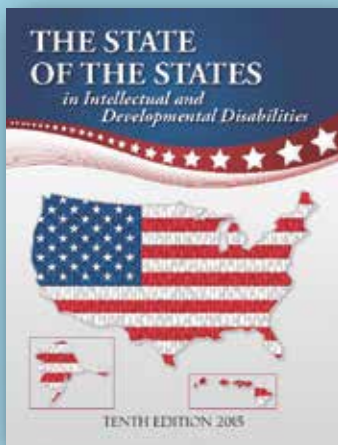
1876–1877	Edouard Sequin, MD	1922–1923	C. Banks McNairy, MD	1968–1969	Richard Koch, MD
1877–1878	Hervey B. Wilbur, MD	1923–1924	Walter E. Fernald, MD	1969–1970	Wesley D. White, EdD
1878–1879	G. A. Doren, MD	1924–1925	Groves B. Smith, MD	1970–1971	Horace Mann, PhD
1879–1880	H. M. Knight, MD	1925–1926	Arthur R.T.Wylie, MD	1971–1972	Robert L. Erdman, EdD
1880–1881	Charles T. Wilbur, MD	1926–1927	Benjamin W. Baker, MD	1972–1973	Michael J. Begab, PhD
1881–1882	George W. Brown, MD	1927–1928	Edward R. Johnstone	1973–1974	David Rosen, MS
1882–1884	J.Q.A. Stewart, MD	1928–1929	George E. McPherson, MD	1974–1975	James D. Clements, MD
1884–1885	A.H. Beaton, MD	1929–1930	George L. Wallace, MD	1975–1976	Sue Allen Warren, PhD
1885–1886	F.M. Powell, MD	1930–1931	H.H. Ramsey, MD	1976–1977	Burton Blatt, EdD
1886–1887	William B. Fish, MD	1931–1932	Harvey M. Watkins, MD	1977–1978	Margaret J. Giannini, MD
1887–1888	George H. Knight, MD	1932–1933	Howard W. Potter, MD	1978–1979	Richard C. Scheerenberger, PhD
1888–1889	J. C. Carson, MD	1933–1934	Ransom A. Greene, MD	1979–1980	Marjorie H. Kirkland, MSSW
1889–1890	A.C. Rogers, MD	1934–1935	Mary M. Wolfe, MD	1980–1981	H. Carl Haywood, PhD
1890–1891	J. T. Armstrong, MD	1935–1936	Edgar A. Doll, PhD	1981–1982	Frank A. Borreca, EdD
1891–1892	Isaac N.Kerlin, MD	1936–1937	Benjamin O. Whitten, MD	1982–1983	A. Gail O'Connor, PhD
1892–1893	Walter E. Fernald, MD	1937–1938	Harry C. Storrs, MD	1983–1984	Herbert J. Grossman, MD
1893–1894	A.E. Osborne, MD	1938–1939	Neil A. Dayton, MD	1984–1985	B.R. (Bill) Walker, PhD
1894–1895	A.W. Wilmarth, MD	1939–1940	Frederick Kuhlmann, PhD	1985–1986	H. Rutherford Turnbull III, LLB, LLM
1895–1896	Samuel J. Fort, MD	1940–1941	Meta L. Anderson, PhD	1986–1987	Harold Michal-Smith, PhD
1896–1897	Martin W. Barr, MD	1941–1942	Fred O. Butler, MD	1987–1988	Valaida S. Walker, EdD
1897–1898	George A. Brown, MD	1942–1943	Horatio M. Pollock, PhD	1988–1989	Robert G. Griffith, EdD
1898–1899	Mary J. Dunlap, MD	1943–1944	C. Stanley Raymond, MD	1989–1990	James W. Ellis, JD
1899–1900	Alexander Johnson	1944–1945	E. Arthur Whitney, MD	1990–1991	Robert R. Bruininks, PhD
1900–1901	W.A. Polglase, MD	1945–1946	Mabel A. Matthews	1991–1992	Jack A. Stark, PhD
1901–1902	F.W. Keating, MD	1946–1947	Warren G. Murray, MD	1992–1993	Michael R. Dillon, EdD
1902–1903	J.M. Murdoch, MD	1947–1948	Lloyd N. Yepsen, PhD	1993–1994	David L. Braddock, PhD
1903–1904	Edward R. Johnstone	1948–1949	Edward J. Humphreys, MD	1994–1995	Karen L. Middendorf
1904–1905	A.H. Beaton, MD	1949–1950	Mildred Thomson	1995–1996	William E. Kiernan, PhD
1905–1906	George Mogridge, MD	1950–1951	Richard H. Hungerford	1996–1997	Pamela C. Baker, PhD
1906–1907	W.H.C. Smith, MD	1951–1952	Edward J. Engberg, MD	1997–1998	Robert L. Schalock, PhD
1907–1908	Charles Bernstein, MD	1952–1953	Bertha M. Luckey, PhD	1998–1999	Stanley S. Herr, J.D., DPhil
1908–1909	W.N. Bullard, MD	1953–1954	Arthur T. Hopwood, MD	1999–2000	Bernard R. Wagner, PhD
1909–1910	Miss Mattie Gundry	1954–1955	Gale H. Walker, MD	2000–2001	Cathy Ficker Terrill, MS
1910–1911	Arthur R.T. Wylie, MD	1955–1956	Arthur E. Westwell, DMD	2001–2002	Steven F. Warren, PhD
1911–1912	H.G. Hardt, MD	1956–1957	Thomas L. McCulloch, PhD	2002–2003	Ruth A. Luckasson, JD
1912–1913	Allan E. Carrol, MD	1957–1958	Chris J. DeProspero, EdD	2003–2004	Ann P. Turnbull, EdD
1913–1914	J.K. Kutnewsky, MD	1958–1959	George Tarjan, MD	2004–2005	David L. Coulter, MD
1914–1915	H.H. Goddard, PhD	1959–1960	Frances M. Coakley	2005–2006	Valerie J. Bradley, MA
1915–1916	Charles Bernstein, MD	1960–1961	Edward L. Johnstone	2006–2007	Henry "Hank" Bersani, Jr, PhD
1916–1917	E.J. Emerick, MD	1961–1962	Herschel W. Nisonger	2007–2008	David A. Rotholz, PhD
1917–1918	George L. Wallace, MD	1962–1963	William Sloan, PhD	2008–2009	Steven M. Eidelman, MSW
1918–1919	Charles S. Little, MD	1963–1964	George L. Wadsworth, MD	2009–2010	Joanna L. Pierson, PhD
1919–1920	George S. Bliss, MD	1964–1965	Harvey A. Stevens	2010–2011	Michael L. Wehmeyer, PhD
1920–1921	H. A. Haynes, MD	1965–1966	I. Ignacy Goldberg, EdD	2011–2012	Sharon C. Gomez
1921–1922	Joseph H. Ladd, MD	1966–1967	Marguerite J. Hastings	2012–2013	Marc J. Tassé, PhD
		1967–1968	Harvey F. Dingman, PhD	2013–2014	James R. Thompson, PhD

# Stay Current with These NEW Titles from AAIDD



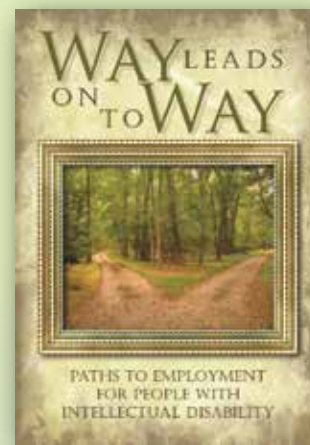
## The Death Penalty and Intellectual Disability

*The Death Penalty and Intellectual Disability* is the authoritative resource for professionals involved in the criminal justice system on the application of diagnostic information concerning intellectual disability (ID) in death penalty cases. The following are among the critical topics addressed: foundational considerations, including diagnostic criteria, the definition of ID, and analyses of Atkins cases; assessment considerations; intellectual functioning, including IQ testing and the Flynn effect; adaptive behavior; and related topics, such as cultural and linguistic factors, competence to waive *Miranda* rights and to stand trial, retrospective diagnosis, malingering, comorbid disorders, educational records, and professional issues.



## The State of the States in Intellectual and Developmental Disabilities

*The State of the States in Intellectual and Developmental Disabilities* is a thorough and one-of-a-kind analysis of public spending, revenues, and programmatic trends in intellectual and developmental services within the United States. Directed by noted researcher Dr. David Braddock, the study is rich in information on trends and analyses in developmental disability services, and contains a 4-page "report card" on each state's performance in disability spending. This is a must-have reference for anyone working in the field of disabilities.



## Way Leads on to Way

Over the course of the past several decades, the disability field has made steady progress in moving toward systems of supports for people with intellectual disability and increased self-determination in life choices. However, meaningful, competitive employment in the community on a large scale is a goal that is yet to be realized. This book looks at the current status of our efforts to achieve this goal by examining the following areas: emerging best practices in employment, the return-to-work process for disability beneficiaries, transition planning, vocational assessment and preparation, supports in competitive employment, postsecondary education, service learning, and planning and supporting employment.